

OPTION 2

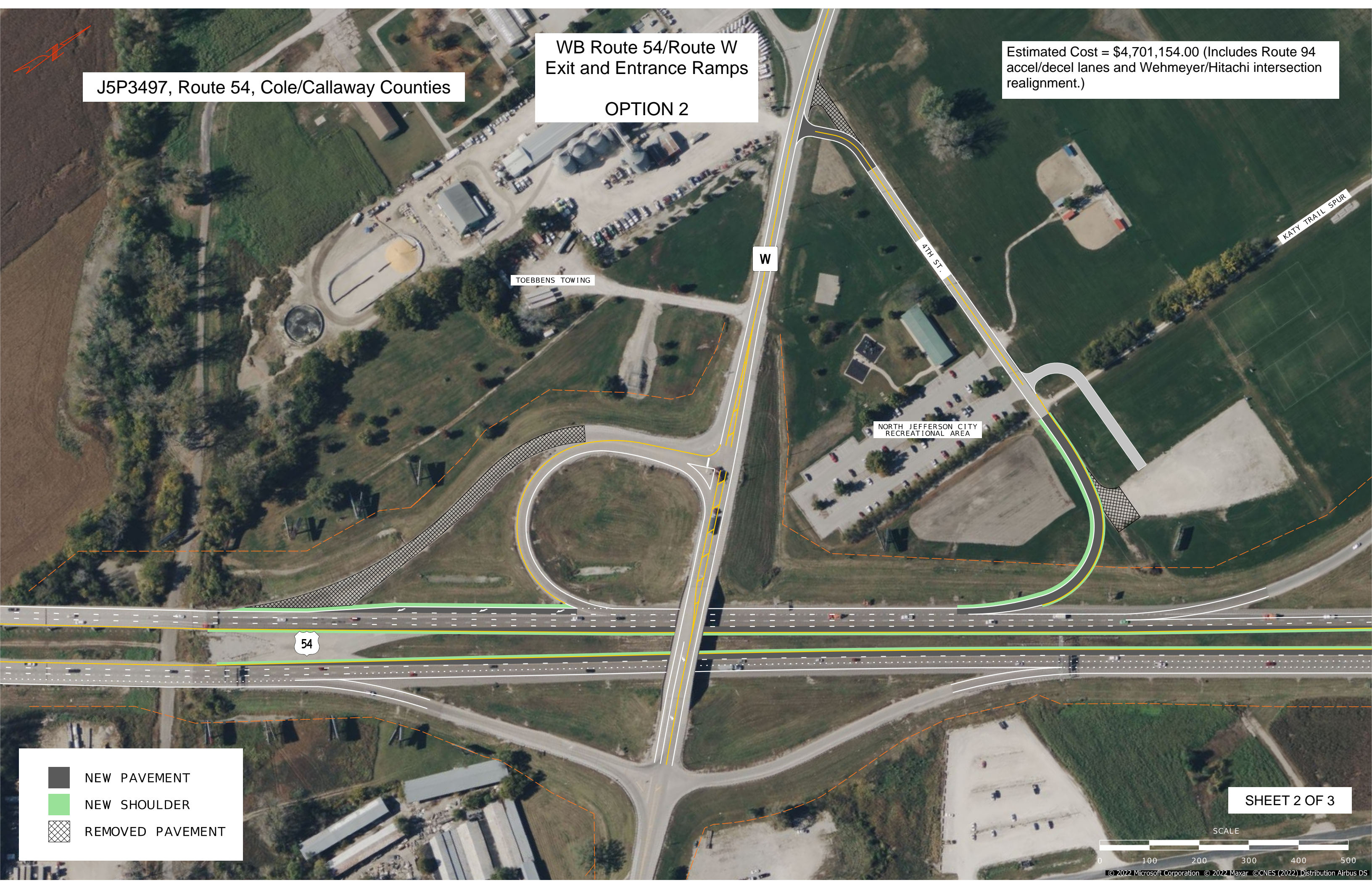





J5P3497, Route 54, Cole/Callaway Counties

WB Route 54/Route W
Exit and Entrance Ramps

OPTION 2

Estimated Cost = \$4,701,154.00 (Includes Route 94
accel/decel lanes and Wehmeyer/Hitachi intersection
realignment.)



-  NEW PAVEMENT
-  NEW SHOULDER
-  REMOVED PAVEMENT

SHEET 2 OF 3

