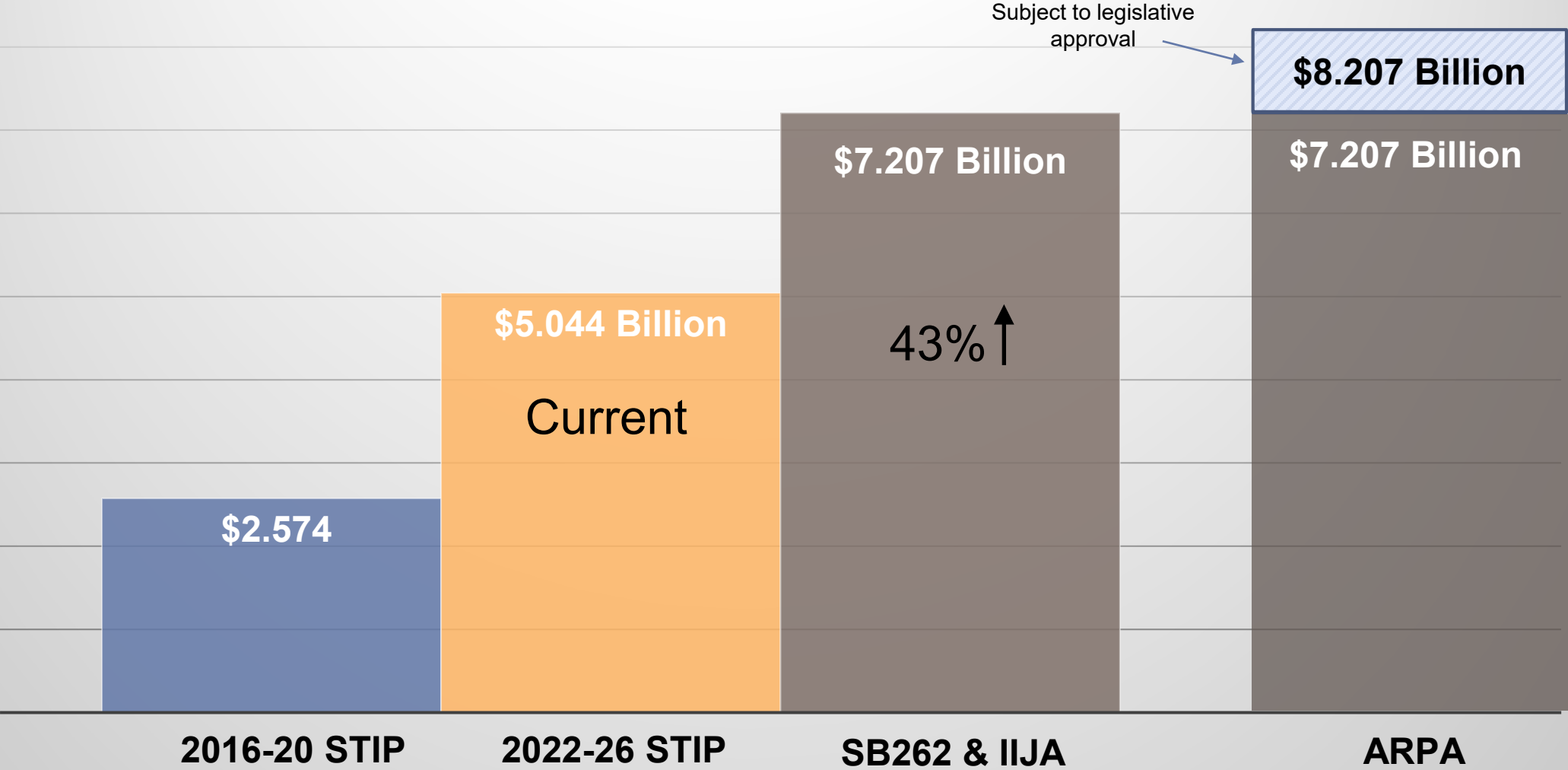


Unfunded Needs Public Meeting 2021 Update



2022-2026 STIP Contractor Awards and Future Funding Strategies



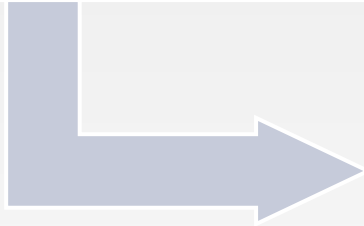
*Estimated STIP distribution

Final SFY2022-2026 STIP

(Fiscal Year 2025 Amounts, as amended)



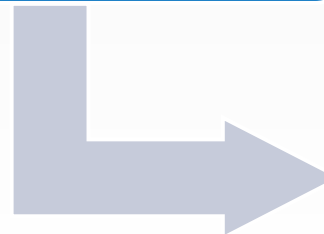
**Total Distributed
Construction
Program Funds**
\$1017 Million



Safety
\$29 Million



**Asset
Management**
\$732 Million



**System
Improvements**
\$256 Million

Distributed based on:

- **System size**
- **System usage**
- **Fatalities/serious injuries**
- **Population**
- **Employment**

Potential 2023-2027 STIP SB262 & IIJA

(Fiscal Year 2025 Amounts)



**Total Distributed
Construction
Program Funds**

\$1,462 Million



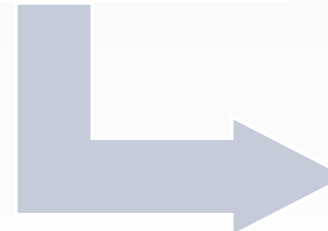
Safety

\$29 Million



**Asset
Management**

\$732 Million



**System
Improvements**

\$701 Million

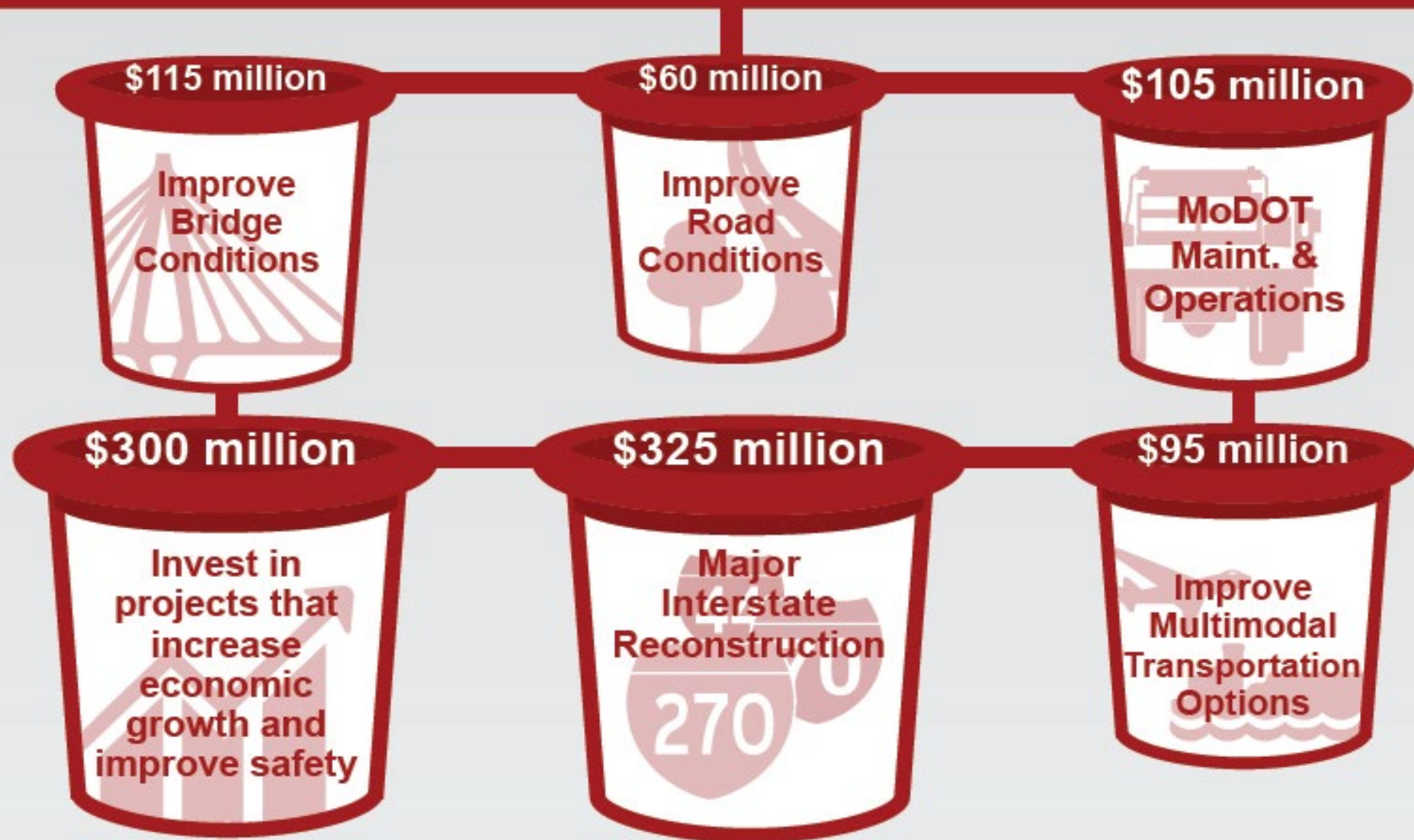
Distributed based on:

- **System size**
- **System usage**
- **Fatalities/serious injuries**
- **Population**
- **Employment**

Subject to MHTC approval

HIGH-PRIORITY UNFUNDED ANNUAL TRANSPORTATION NEEDS

\$1 billion



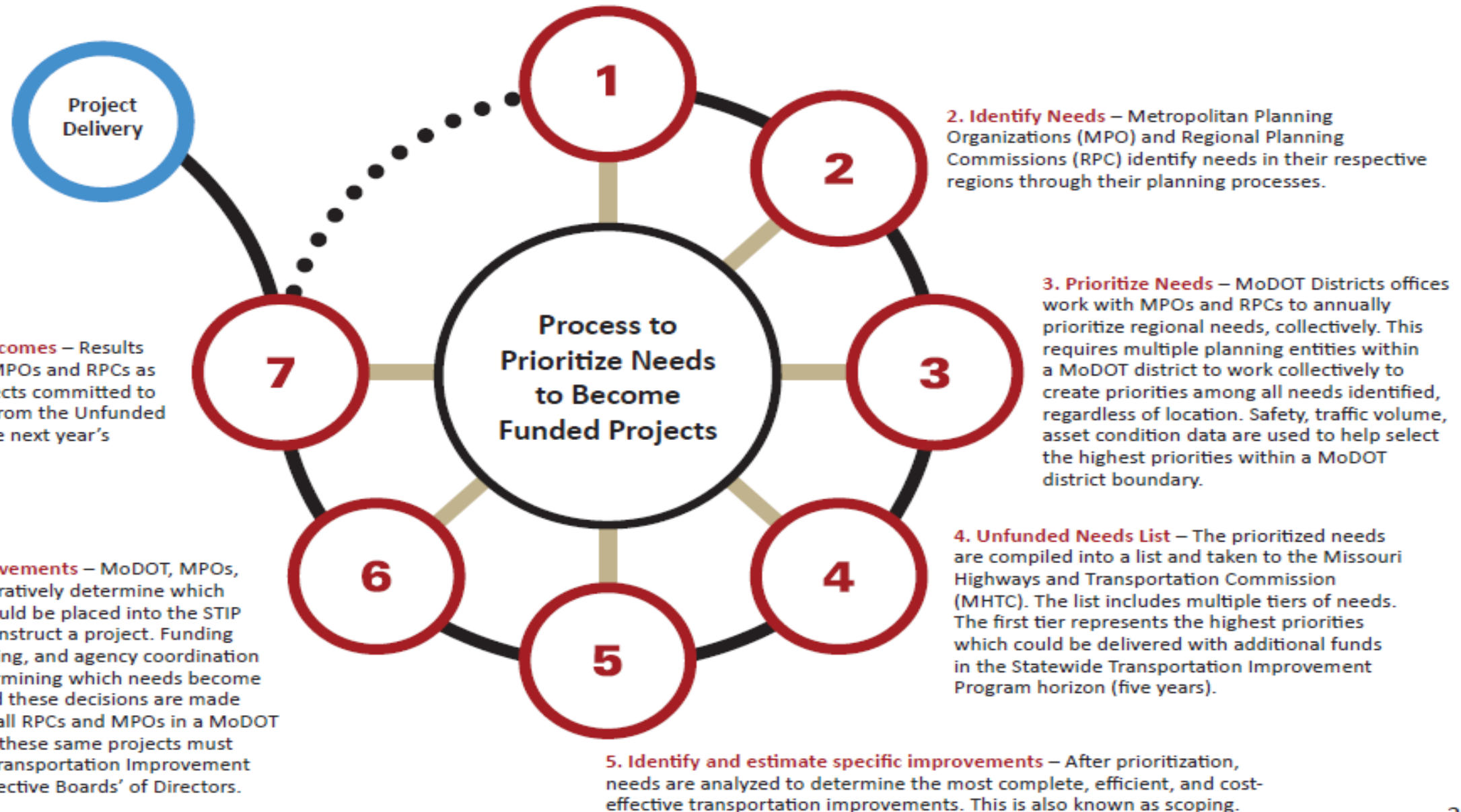
HIGH-PRIORITY UNFUNDED NEEDS



Nov. 2021



1. Establish a vision – MoDOT’s vision for its transportation future is best captured by the five goals established by Missourians in the Long-Range Transportation Plan. In priority order, they are: 1) Take care of the transportation system; 2) Keep all travelers safe; 3) Invest in projects that spur economic growth and create jobs; 4) Give Missourians better transportation choices; and 5) Improve reliability and reduce congestion.



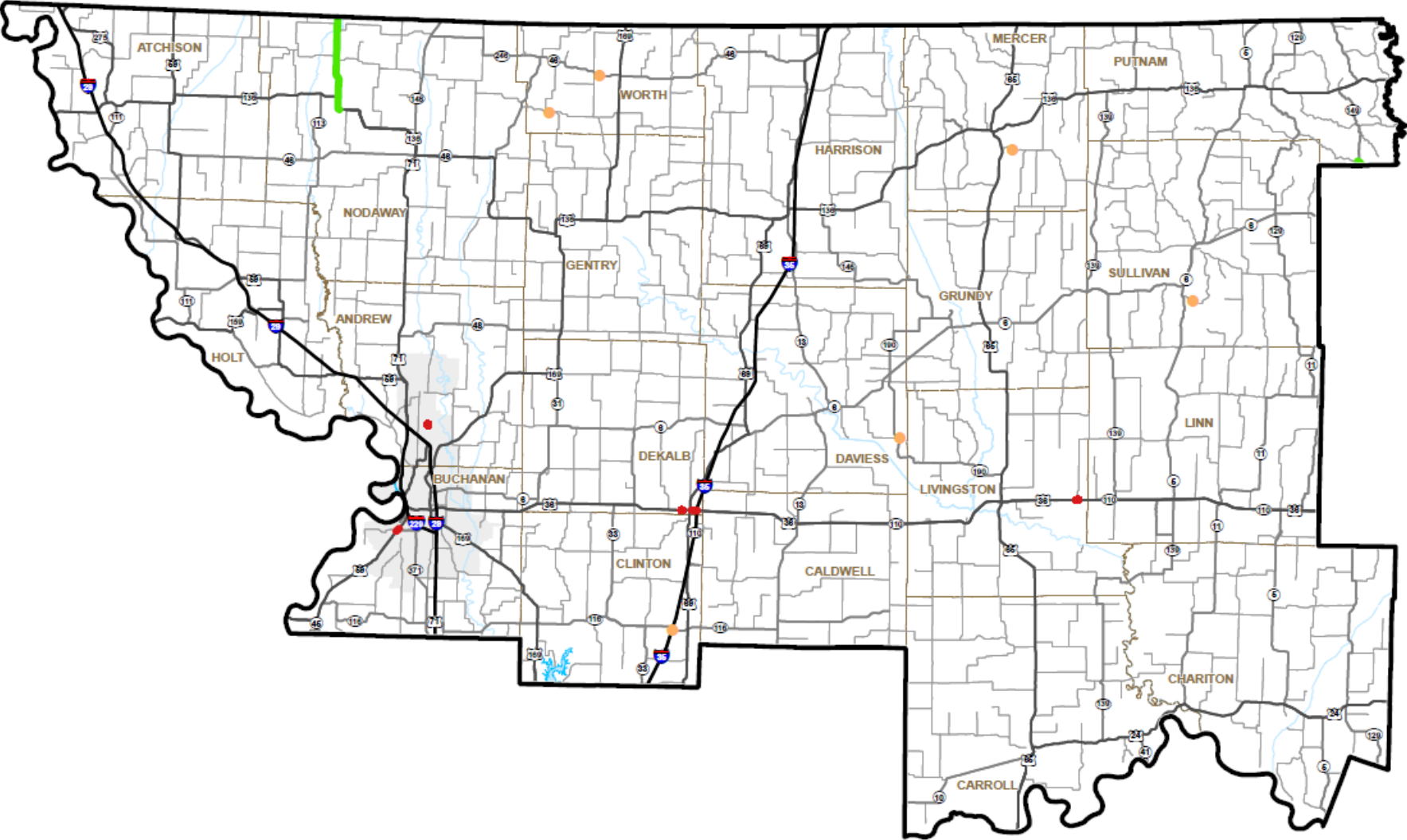
A decorative graphic on the left side of the slide. It features a large, thick red circle with the number "3" inside it. The circle is partially overlaid by a thick black diagonal line and a thick tan horizontal line. Below the circle, there is a small red semi-circle and a black curved line.

3

3. Prioritize Needs – MoDOT Districts offices work with MPOs and RPCs to annually prioritize regional needs, collectively. This requires multiple planning entities within a MoDOT district to work collectively to create priorities among all needs identified, regardless of location. Safety, traffic volume, asset condition data are used to help select the highest priorities within a MoDOT district boundary.



Northwest District – Tier 1



High Priority Unfunded
Road and Bridge Needs

NORTHWEST
District

Tier 1 \$24M

DRAFT

- Improve Bridge Conditions
- Improve Road Conditions
- Increase Economic Growth and Improve Safety
- Major Interstate Reconstruction



Missouri Department of Transportation
Transportation Planning
1-888-ASK-MODOT
WWW.MODOT.ORG
October 2021

Northwest – Tier 2



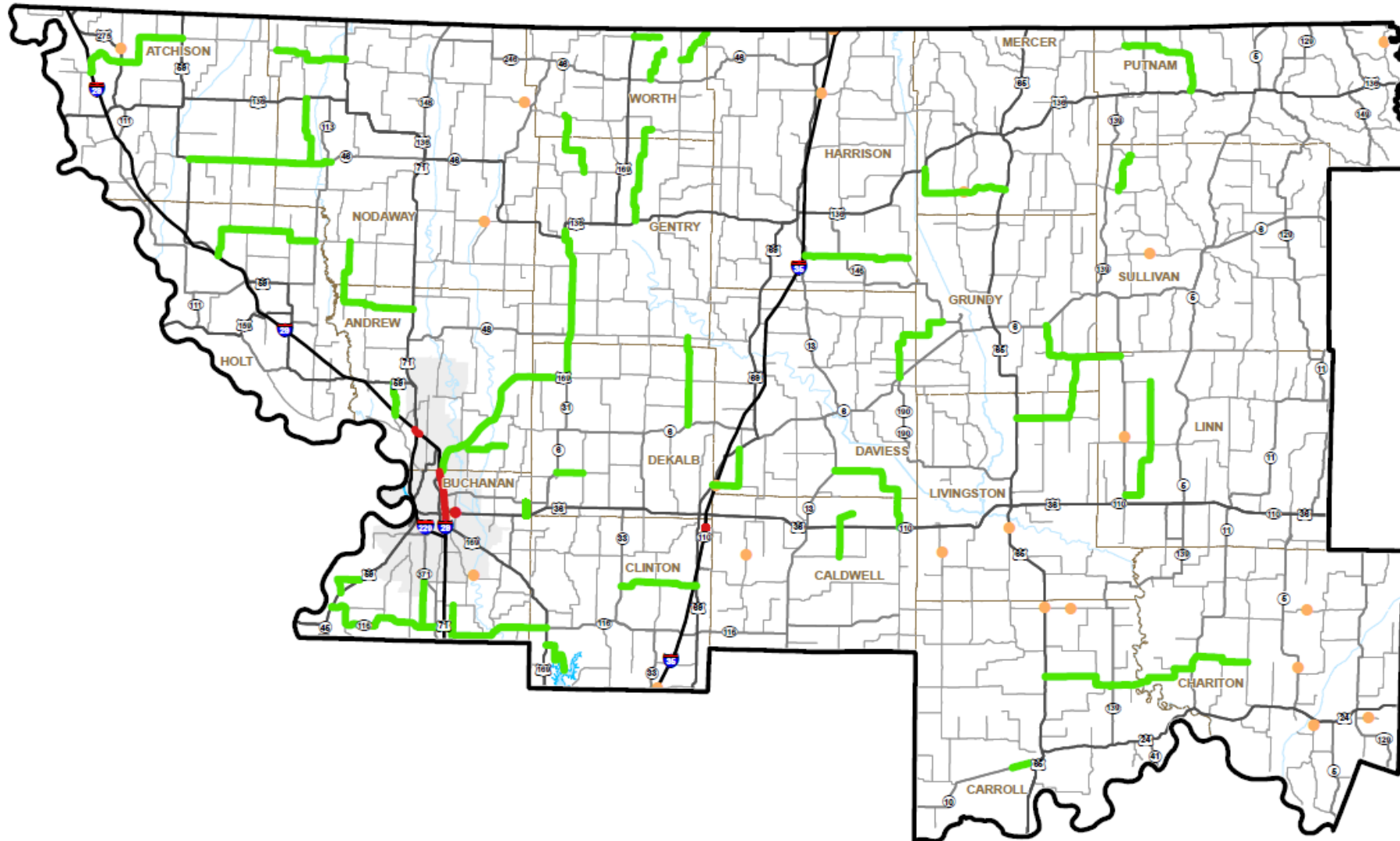
High Priority Unfunded
Road and Bridge Needs

NORTHWEST
District

Tier 2 \$98M

DRAFT

- Improve Bridge Conditions
- Improve Road Conditions
- Increase Economic Growth and Improve Safety
- Major Interstate Reconstruction



Northwest – Tier 3



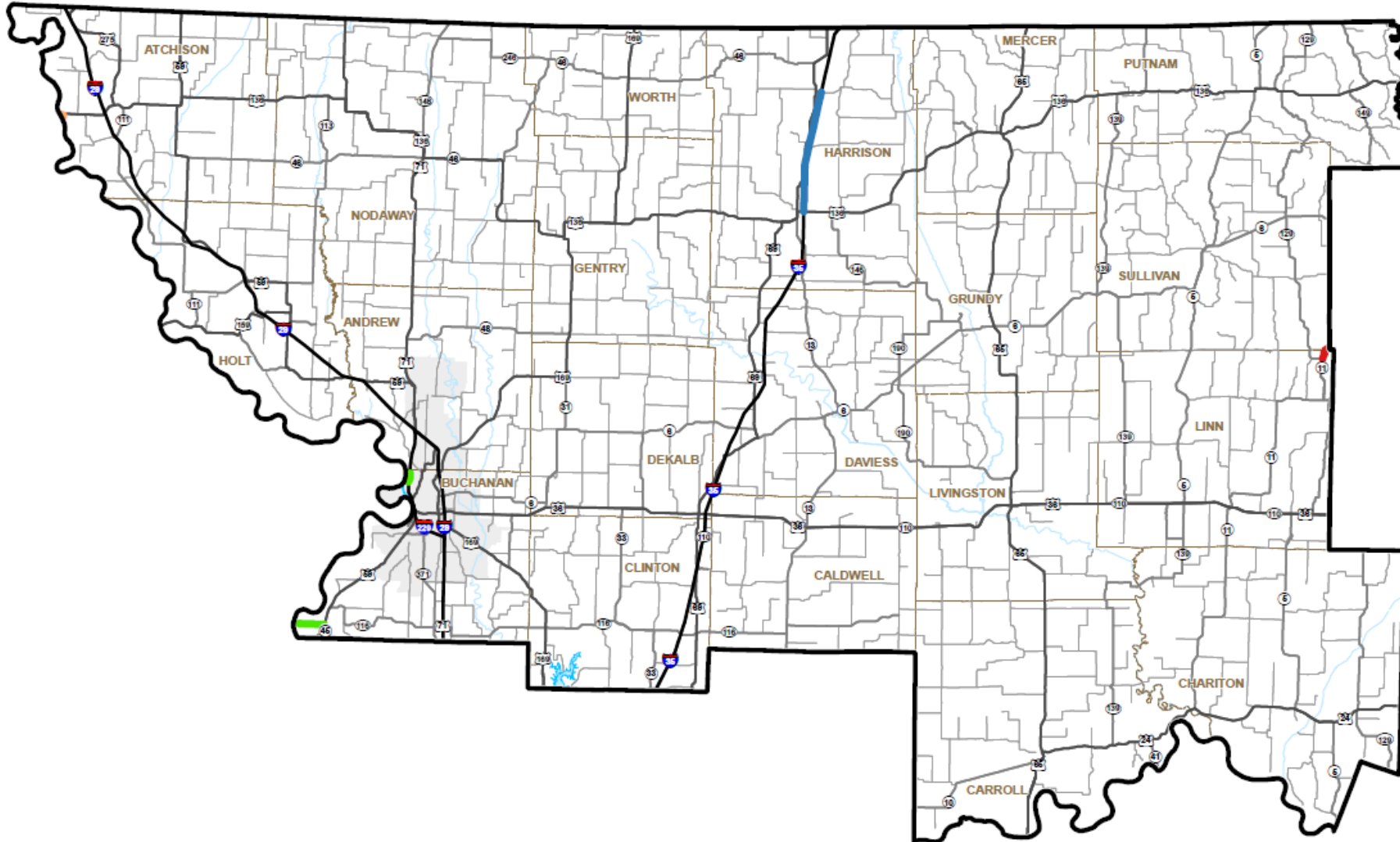
High Priority Unfunded
Road and Bridge Needs

NORTHWEST
District

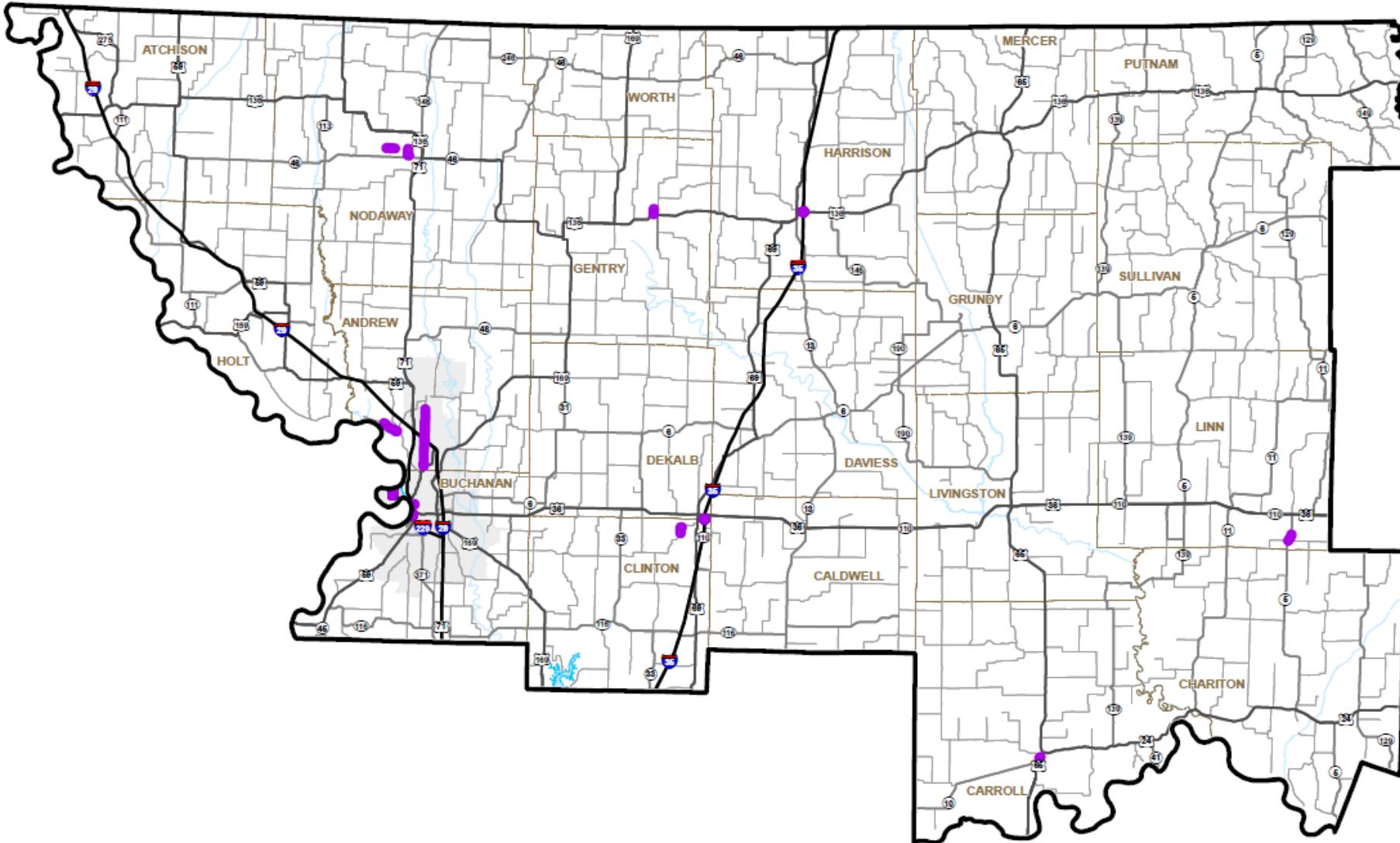
Tier 3 \$98M

DRAFT

- Improve Bridge Conditions
- Improve Road Conditions
- Increase Economic Growth and Improve Safety
- Major Interstate Reconstruction



Northwest – Multimodal



High Priority Unfunded
Multimodal Needs

NORTHWEST
District

\$47M

DRAFT

Improve Multimodal
Transportation Options



Northwest Summary



Tier	Improve Bridge Conditions	Improve Road Condition	Major Interstate Reconstruction	Increase Economic Growth and Improve Safety	Improve Multimodal Transportation Options	Totals
One	7,154	5,710		11,500		\$24,364
Two	23,816	30,952		42,750		\$97,518
Three	25,400	25,570	46,781			\$97,751
Multimodal					47,024	\$47,024
Total	\$56,370	\$62,232	\$46,781	\$54,250	\$47,024	\$266,657

Statewide Summary



TOTALS BY PRIORITY

DISTRICT	TIER 1	TIER 2	TIER 3	MULTIMODAL	MAJOR BRIDGE	STATEWIDE	GRAND TOTAL
NW	\$24,364	\$97,518	\$97,751	\$47,024	\$106,070	-	\$372,727
NE	\$22,803	\$95,295	\$96,258	\$47,136	\$54,000	-	\$315,492
KCR	\$15,400	\$65,979	\$56,270	\$28,186	\$57,060	-	\$222,895
KCU	\$100,970	\$372,300	\$375,792	\$182,000	\$50,160	-	\$1,081,222
CD	\$62,000	\$213,799	\$236,837	\$117,165	-	-	\$629,801
SL	\$195,900	\$779,800	\$872,520	\$374,321	\$91,800	-	\$2,314,341
SWR	\$47,642	\$191,899	\$193,146	\$95,905	-	-	\$528,592
SWU	\$26,758	\$111,592	\$108,167	\$52,959	-	-	\$299,476
SE	\$47,541	\$213,508	\$175,383	\$91,403	\$67,700	-	\$595,535
STATEWIDE	-	-	-	-	-	\$1,635,800	\$1,635,800
REMAINING UNFUNDED NEEDS							\$2,004,120
GRAND TOTAL	\$543,378	\$2,141,690	\$2,212,124	\$1,036,099	\$426,790	\$1,635,800	\$10,000,000

Statewide Summary



TOTALS BY TYPE

DISTRICT	IMPROVE BRIDGE CONDITIONS	IMPROVE ROAD CONDITIONS	INCREASE ECONOMIC GROWTH AND IMPROVE SAFETY	MAJOR INTERSTATE RECONSTRUCTION	MULTIMODAL	GRAND TOTAL
NW	\$56,370	\$62,232	\$54,250	\$46,781	\$47,024	\$266,657
NE	\$14,682	\$19,521	\$180,153	-	\$47,136	\$261,492
KCR	\$15,400	\$83,014	\$39,235	-	\$28,186	\$165,835
KCU	-	\$199,300	\$649,762	-	\$182,000	\$1,031,062
CD	-	-	\$454,023	\$58,613	\$117,165	\$629,801
SL	\$685,200	\$76,500	\$399,420	\$687,100	\$374,321	\$2,222,541
SWR	\$1,000	\$47,360	\$333,112	\$51,215	\$95,905	\$528,592
SWU	-	\$49,860	\$169,055	\$27,602	\$52,959	\$299,476
SE	\$6,742	\$2,887	\$426,803	-	\$91,403	\$527,835
STATEWIDE	-	\$25,000	\$90,800	\$1,500,000	\$20,000	\$1,635,800
MAJOR BRIDGE	\$426,790	-	-	-	-	\$426,790
REMAINING UNFUNDED NEEDS						\$2,004,120
GRAND TOTAL	\$1,206,184	\$565,674	\$2,796,613	\$2,371,311	\$1,056,099	\$10,000,000

To view the document and submit a comment:

www.modot.org/unfundedneeds

