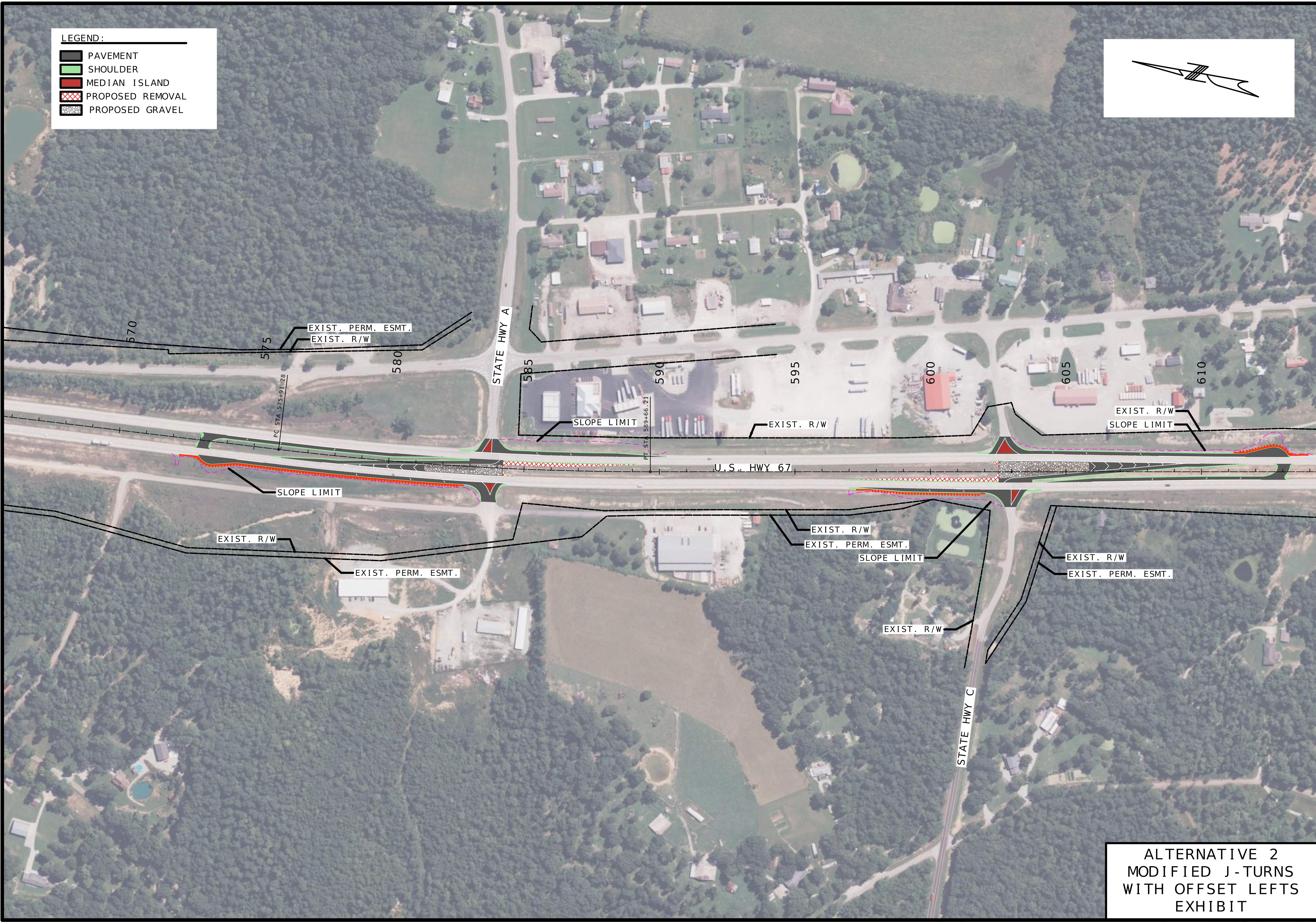
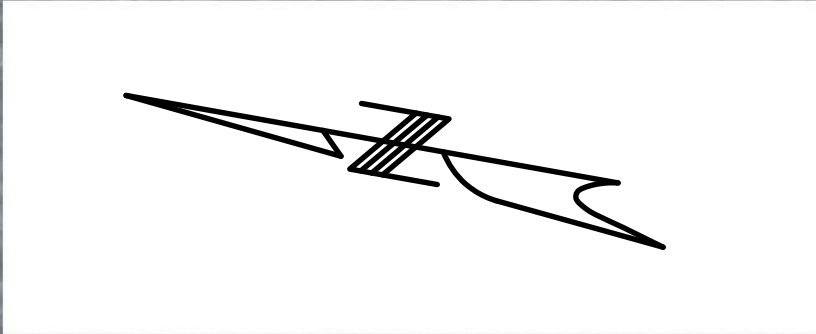


LEGEND:

- PAVEMENT
- SHOULDER
- MEDIAN ISLAND
- PROPOSED REMOVAL
- PROPOSED GRAVEL



ALTERNATIVE 2
MODIFIED J-TURNS
WITH OFFSET LEFTS
EXHIBIT

"THIS MEDIA SHOULD NOT BE CONSIDERED A CERTIFIED DOCUMENT."

DATE

DATE PREPARED
5/28/2025

ROUTE 67	STATE MO
DISTRICT SE	SHEET NO. 2

COUNTY
MADISON

JOB NO.
SE0069

CONTRACT ID.

PROJECT NO.

BRIDGE NO.

DESCRIPTION	DATE

MISSOURI HIGHWAYS AND TRANSPORTATION COMMISSION

105 WEST CAPITOL
JEFFERSON CITY, MO 65102
1-888-ASK-MODOT (1-888-275-6636)

GARVER, LLC.
7509 NW TIFFANY SPRINGS
PARKWAY, SUITE 200
KANSAS CITY, MO 64153
PHONE: (816) 298-6465
CERTIFICATE OF AUTHORITY
NO. 2008013090