



# PROPOSED NOISE BARRIER HANDOUT

## Project History

The U.S. Route 60 Project is a \$8.2 million project in south Springfield. This project improves safety and mobility throughout the corridor, and adds an additional driving lane to each direction of U.S. Route 60 from National Avenue to South Kansas Expressway. MoDOT plans to start construction of this project in 2022.



## Project Background & Noise Impacts

As part of the U.S. Route 60 lane addition Project, a traffic noise impact analysis was performed. This analysis determined that areas along the project corridor will experience sound-level impacts under design year (2040) traffic conditions. A noise impact occurs when a predicted design year noise level exceeds 66 decibels.

## For More Information

Go to [modot.org/james-river-freeway-us-route-60-sound-barrier](http://modot.org/james-river-freeway-us-route-60-sound-barrier) which focuses on areas within the U.S. Route 60 project corridor that qualify for noise abatement measures (Noise Barriers). Here you will find...

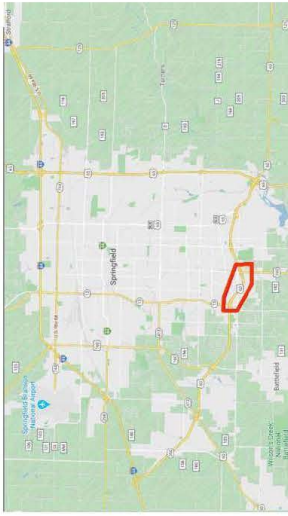
Also, included in this envelope is a ballot for you to cast your vote on whether or not Noise Barriers should be constructed at the recommended location, found on the back of this flyer.

## Questions or Comments?

For more information about this project, please visit the project website at [www.modot.org/southwest](http://www.modot.org/southwest) or contact:

Warner "Bud" Sherman, MoDOT  
417.895.7690  
[warner.sherman@modot.mo.gov](mailto:warner.sherman@modot.mo.gov)

# NSA 3 - Receiver Map (Barrier Design 3a) US-60 Traffic Noise Study



Not To Scale

NOTE: Noise Levels Based  
On 2040 Traffic Projections

- Legend**
- Non-Impacted Receiver
  - Impacted Receiver
  - ⊗ Non-Impacted Receiver (Multiple Receptors)
  - ⊗ Impacted Receiver (Multiple Receptors)
  - ⊗ Benefitted Receiver
  - ▬ Sound Wall
  - ◆ Field Measurement Location

