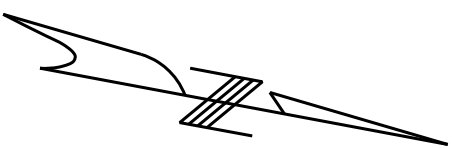
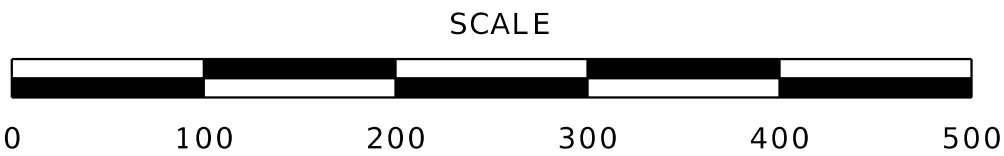


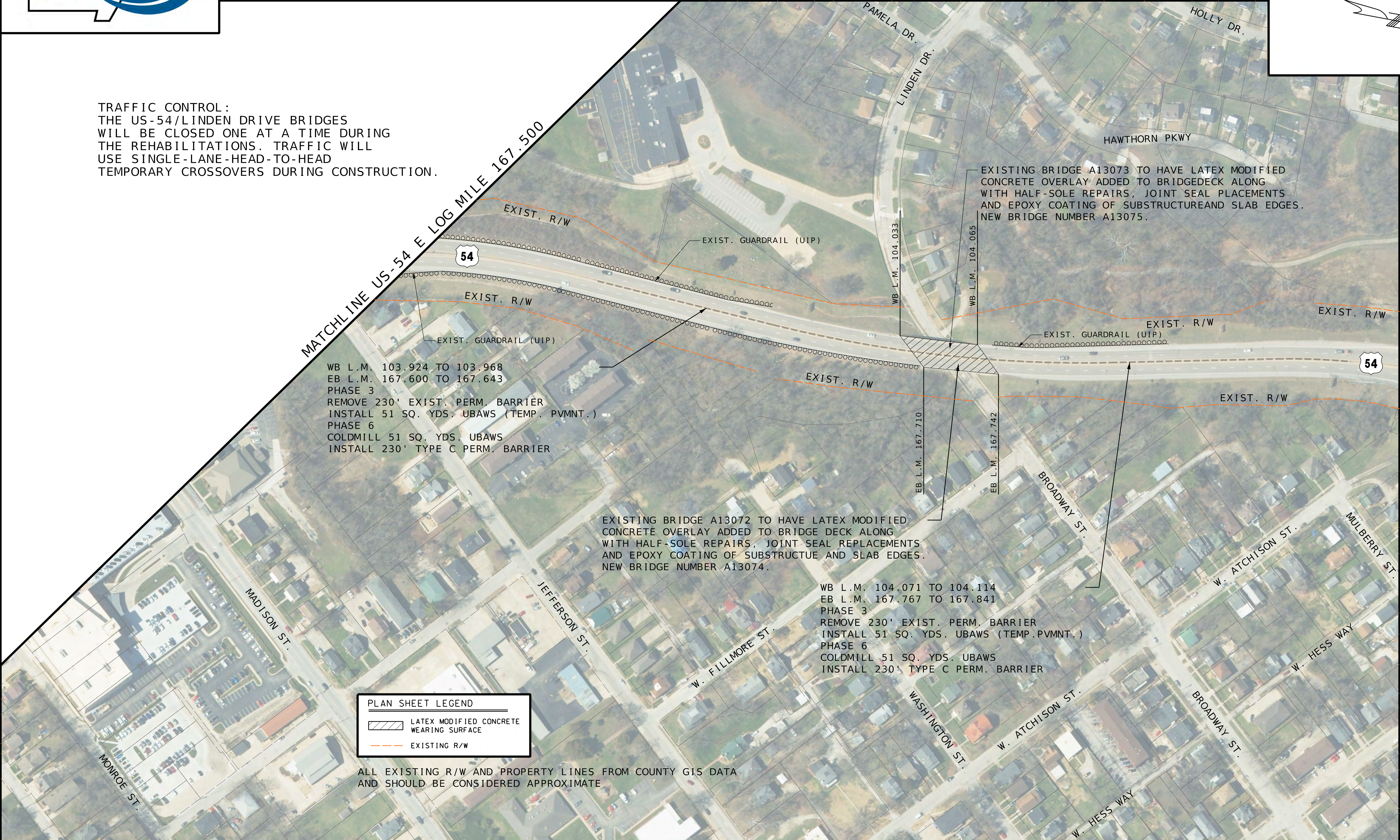


US-54 BRIDGE REHABILITATIONS OVER LINDEN DRIVE

PRELIMINARY PLANS-SUBJECT TO CHANGE



TRAFFIC CONTROL:
THE US-54/LINDEN DRIVE BRIDGES
WILL BE CLOSED ONE AT A TIME DURING
THE REHABILITATIONS. TRAFFIC WILL
USE SINGLE-LANE-HEAD-TO-HEAD
TEMPORARY CROSSOVERS DURING CONSTRUCTION.



WB L.M. 103.924 TO 103.968
EB L.M. 167.600 TO 167.643
PHASE 3
REMOVE 230' EXIST. PERM. BARRIER
INSTALL 51 SQ. YDS. UBAWS (TEMP. PVMNT.)
PHASE 6
COLDMILL 51 SQ. YDS. UBAWS
INSTALL 230' TYPE C PERM. BARRIER

EXISTING BRIDGE A13072 TO HAVE LATEX MODIFIED
CONCRETE OVERLAY ADDED TO BRIDGE DECK ALONG
WITH HALF-SOLE REPAIRS, JOINT SEAL REPLACEMENTS
AND EPOXY COATING OF SUBSTRUCTUE AND SLAB EDGES.
NEW BRIDGE NUMBER A13074.

WB L.M. 104.071 TO 104.114
EB L.M. 167.767 TO 167.841
PHASE 3
REMOVE 230' EXIST. PERM. BARRIER
INSTALL 51 SQ. YDS. UBAWS (TEMP. PVMNT.)
PHASE 6
COLDMILL 51 SQ. YDS. UBAWS
INSTALL 230' TYPE C PERM. BARRIER

EXISTING BRIDGE A13073 TO HAVE LATEX MODIFIED
CONCRETE OVERLAY ADDED TO BRIDGEDECK ALONG
WITH HALF-SOLE REPAIRS, JOINT SEAL PLACEMENTS
AND EPOXY COATING OF SUBSTRUCTUREAND SLAB EDGES.
NEW BRIDGE NUMBER A13075.

PLAN SHEET LEGEND

	LATEX MODIFIED CONCRETE WEARING SURFACE
	EXISTING R/W

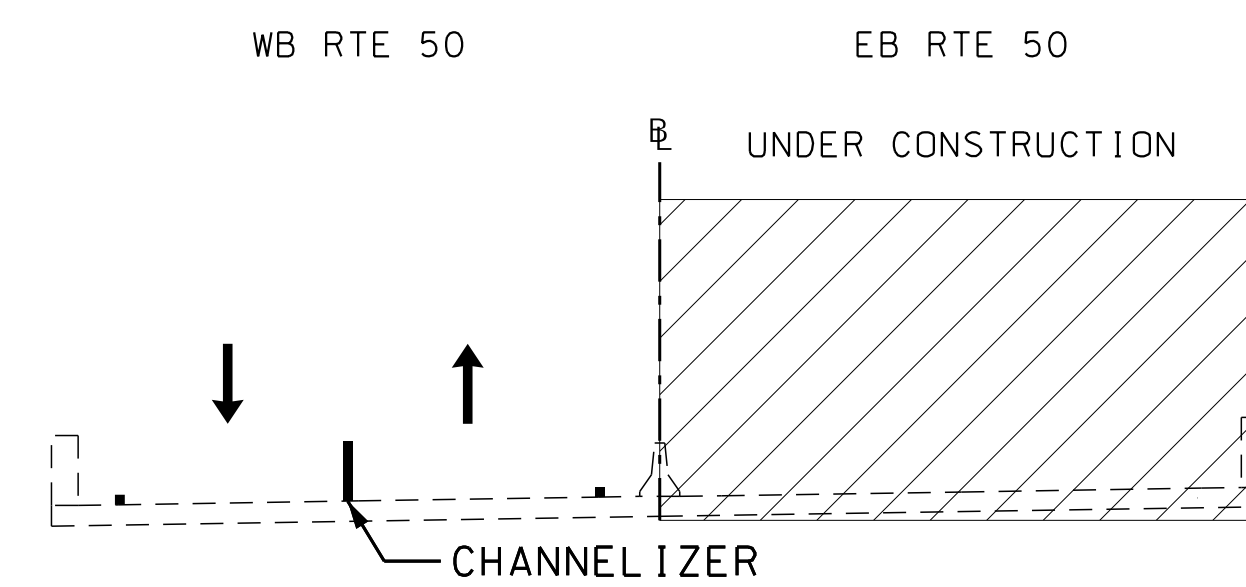
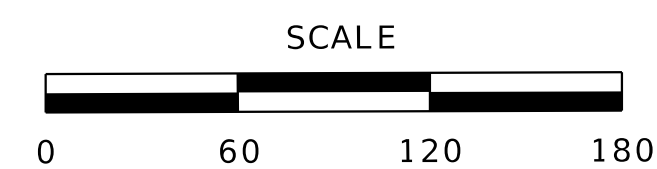
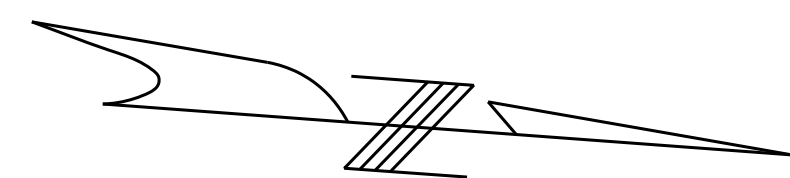
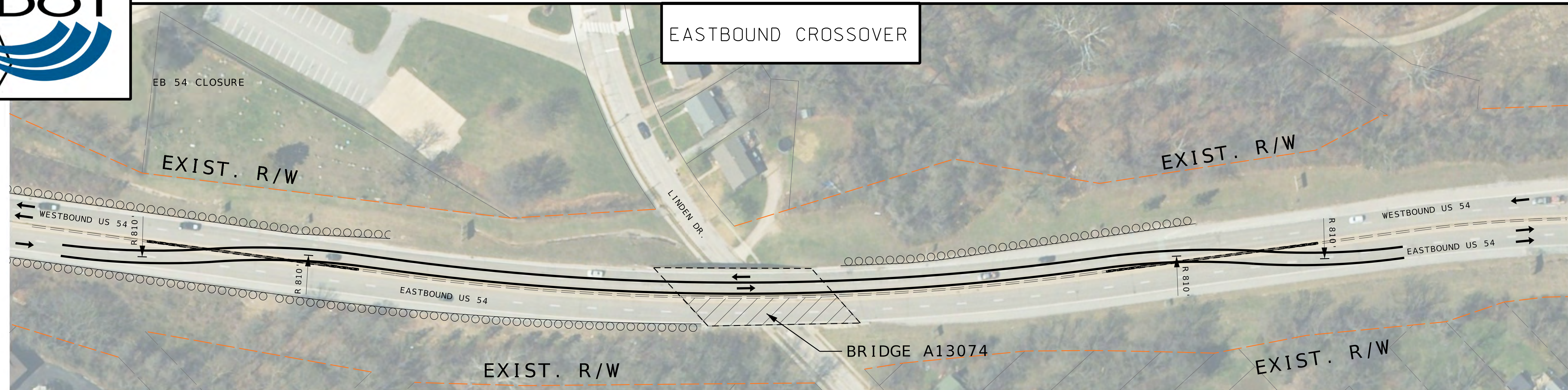
ALL EXISTING R/W AND PROPERTY LINES FROM COUNTY GIS DATA
AND SHOULD BE CONSIDERED APPROXIMATE



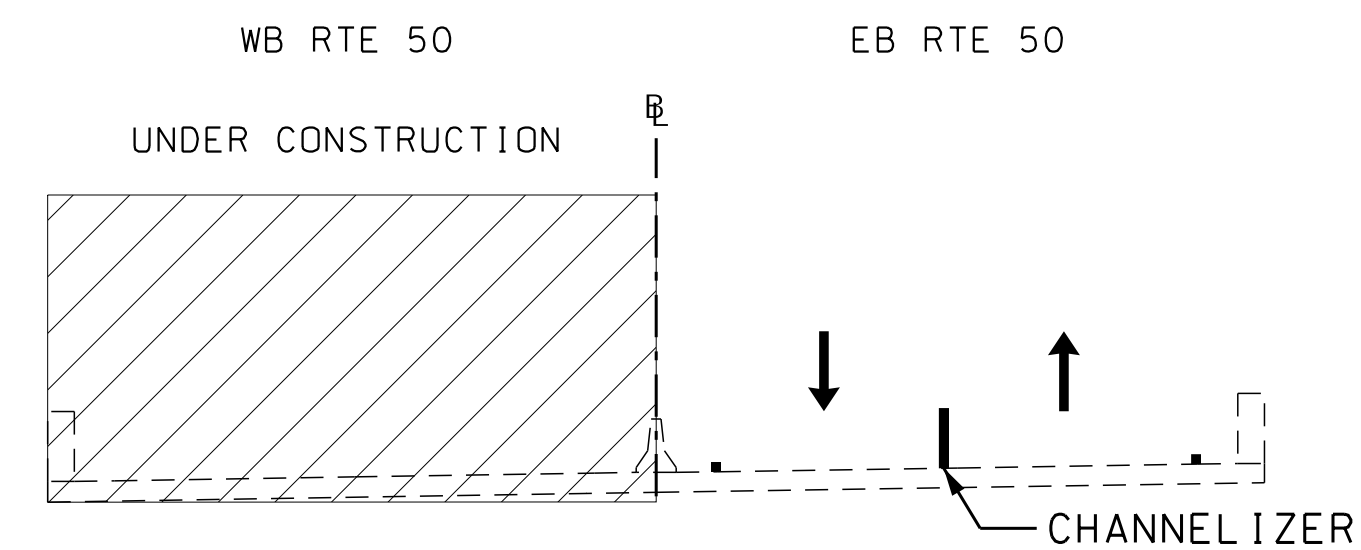


US-54 OVER LINDEN DRIVE- TEMPORARY CROSSOVER DETAILS

EASTBOUND CROSSOVER



EASTBOUND CROSSOVER US-54
BRIDGE A13074 & A13075



WESTBOUND CROSSOVER US-54
BRIDGE A13074 & A13075

- PLAN SHEET LEGEND
- LATEX MODIFIED CONCRETE WEARING SURFACE
 - EXISTING R/W

WESTBOUND CROSSOVER

