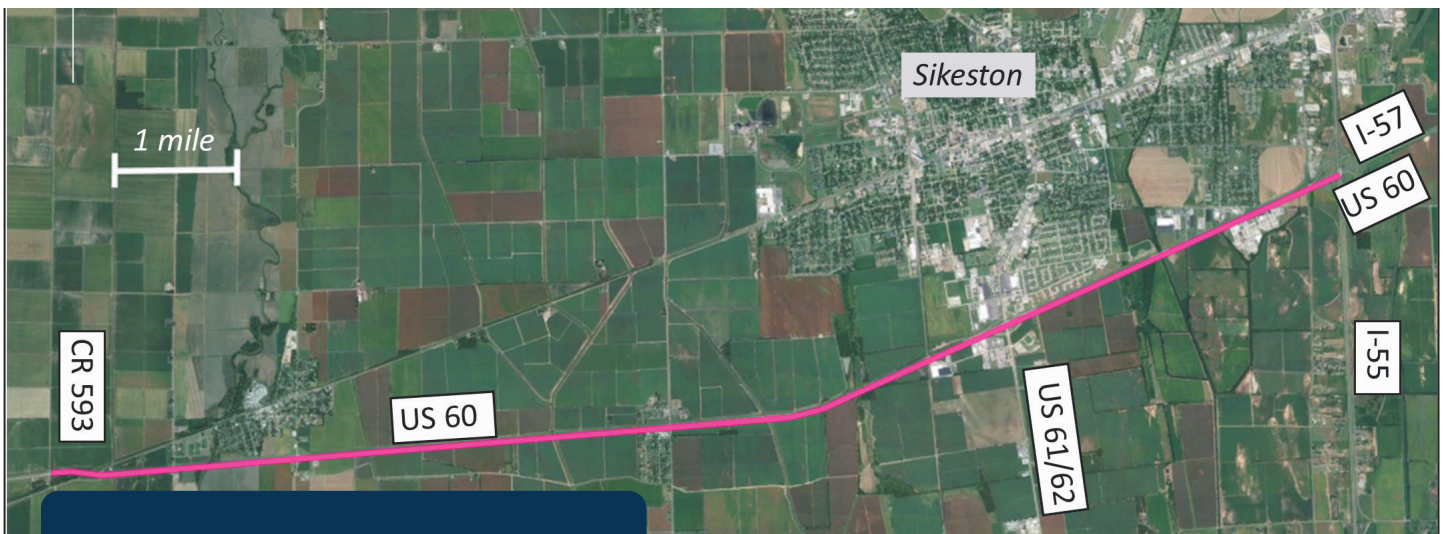


U.S. ROUTE 60 CORRIDOR STUDY



UPGRADING TO INTERSTATE STANDARDS

To extend Interstate 57, it will be necessary to upgrade U.S. 60 to interstate standards. The corridor includes many at-grade intersections in addition to multiple field entrances, median crossovers, and private driveways. These access points would need to be removed. Instead, a network of outer roads with interchanges would need to be constructed to provide access.

This study provides a preliminary look at options for upgrading the roadway in an effort to improve safety and traffic flow. Factors such as roadway capacity, local access, safety, environmental issues, and the movement of goods will be considered.

This 11-mile section is currently unfunded for construction.

ABOUT THE STUDY

This study includes an 11-mile section of U.S. Route 60 from the I-55/I-57/US 60 interchange in Sikeston, Missouri to County Road 593. The study is the first step in a multi-phase process to extend Interstate 57 from I-55 in Sikeston, Missouri to Little Rock, Arkansas.

U.S. 60 currently runs east-west across southern Missouri. This roadway carries between 9,600 and 15,300 vehicles per day, including 3,600 trucks.

ALTERNATIVES

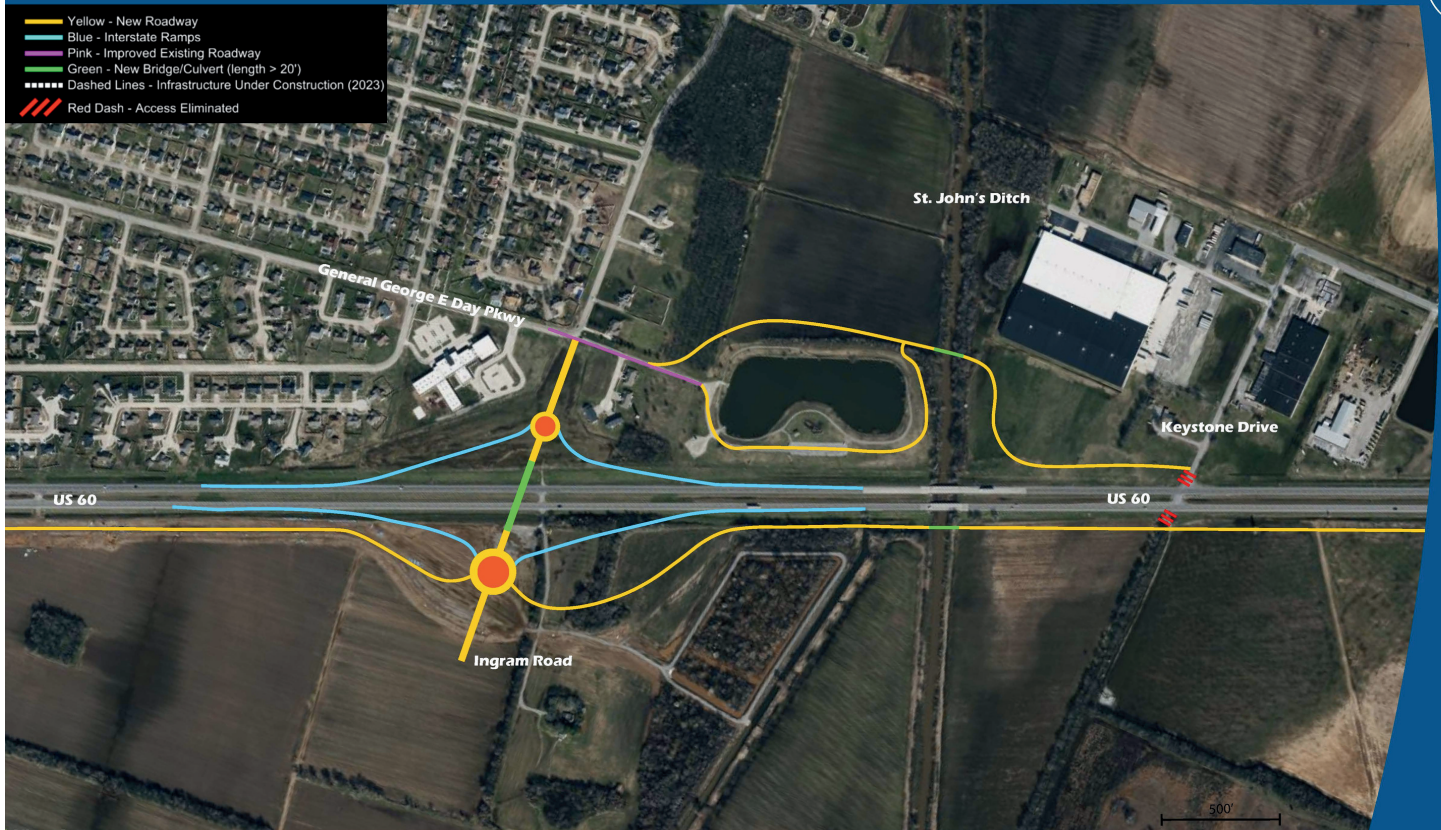
After speaking with community leaders, working with a technical advisory group and conducting an analysis of the region, three alternatives were recommended for detailed evaluation. The alternatives included combinations of the following elements:

- Constructing Interchanges
Route E and/or Route FF
- Providing Ramp Access and/or Outer Roads
Between US 61/62 and I-55
- Flyover Ramp
For I-57 southbound to I-55 southbound movement

U.S. ROUTE 60 CORRIDOR STUDY

RECOMMENDED CONCEPTUAL ALTERNATIVE

Ingram Road Service Interchange



When I-57 is extended, access will be only via interchanges. At-grade intersections, field access points, non-emergency median crossovers, and residential driveways will be removed.



CONCEPTUAL STUDY TIMELINE

