



GENERAL CONSULTANT INFORMATION



**T² TRAFFIC
AND
TRANSPORTATION**
DBE/WBE

Carrie Falkenrath established T² Traffic & Transportation, LLC in July 2016 as a woman-owned business, obtaining DBE and WBE certification in 2018. After over twenty years as a transportation and traffic consultant, she saw a need in the local industry for a small firm that could **scale its services to meet the flexible needs of individual projects and clients.**

In Carrie's previous role, she delivered the majority of her projects independently, typically acting as Project Manager, Technical Lead, and Production staff. Through T², she maintains this approach without the need for additional management/principal coordination, **reducing project costs and schedules**, and assuring clients can be in direct contact with their project engineer.

With a breadth and depth of **transportation** experience in **planning, operations, and design**, T² applies a holistic approach to projects. The goal of every assignment is to identify uniquely tailored solutions, drawing from innovative and proven tools with a logical approach to implementation while developing a consensus among all involved owners, stakeholders, and designers.

STAFF QUALIFICATIONS

MoDOT LPA Projects will be managed and delivered by Carrie A. Falkenrath, PE, PTOE, PTP, RSP₁ who will perform the majority of professional services with the exception of support from T² field personnel for significant data collection and/or observation needs. As T²'s Principal Engineer, Carrie has the ability to **respond quickly to inquiries and assignments**, including shifting workload and project demands to assist Local Public Agencies in meeting their necessary timeframes and deadlines for individual projects.



Carrie has been working on **LPA, independent municipal, and MoDOT** projects for over 26 years, beginning with her very first assignments on seven unique TEAP projects, including over 23 years in Missouri with regional and international consulting firms. These projects range from planning ("Great Streets") to traffic engineering ("Traffic Impact Studies") to operational analysis ("Roundabout Studies") and includes state- and locally-funded projects, and projects reviewed by the following MO agencies:

- | | | | |
|------------------------------|---------------------------------|---------------------------------------|----------------------------|
| <i>The City of Kirkwood</i> | <i>The City of Springfield</i> | <i>The City of Webster Groves</i> | <i>St. Charles County</i> |
| <i>The City of Ballwin</i> | <i>The City of Chesterfield</i> | <i>The City of Richmond Heights</i> | <i>St. Louis County</i> |
| <i>The City of St. Louis</i> | <i>The City of Frontenac</i> | <i>The City of Town & Country</i> | <i>The City of Clayton</i> |
| <i>The City of O'Fallon</i> | <i>The City of Maplewood</i> | <i>The City of University City</i> | <i>The City of Rolla</i> |
| <i>The City of Columbia</i> | <i>The City of Grandview</i> | <i>The City of Creve Coeur</i> | <i>The City of Fenton</i> |

During her education and career, Carrie has worked in roadway maintenance, project execution (RE), and in roadway and trail design. These experiences give Carrie a unique perspective for transportation planning and traffic engineering as she considers both the connected system and the full cycle of project components.



RELATED FIRM EXPERIENCE

Since opening its doors in 2016, T² has performed traffic engineering and transportation planning tasks on a wide range of projects within local agencies for clients including MoDOT, municipalities, developers/owners, and as a subconsultant to other A/E/D firms. T² is excited to continue working with Missouri's Local Public Agencies to help **deliver independent,**

community-focused projects and understands the importance of these projects to City leaders and residents. T² is uniquely suited to deliver these smaller LPA transportation projects: the firm is experienced with working together with clients to define needs and revise strategies accordingly and can respond to changing tasks and schedules nimbly, because the Project Manager always leads the technical work.

Tsquared's experience includes a variety of federally- and locally funded municipal projects. Three recent or ongoing LPA projects are described below:

"Tsquared's study, presentation and technical support assisted the City in the installation of a PHB that has enhanced pedestrian safety at this location."
*Bill Bensing –Director of Public Services,
City of Kirkwood*

I-49 Outer Road Conversion Design-Build Project – City of Grandview, MO



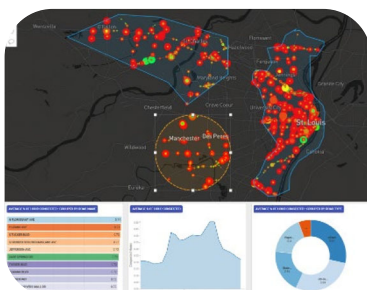
For the first LPA-led Design-Build project in MO, T² was responsible for traffic analysis and modeling (VISSIM, SIDRA, SYNCHRO) during the pursuit and final design phases for the successful D-B Team. Tasks included conceptual turbo roundabout design support, traffic projections and origin-destination matrix, alternate control methodologies, extensive coordination with MoDOT, and support of both a Traffic Safety and Operations (TS&O) and Revised AJR documentation submittals.

Compton Avenue Bridge Reconstruction – City of St. Louis, MO: MoDOT LPA Project

T² is responsible for Traffic Engineering analysis and design on a large, multidisciplinary team to redesign a critical bridge corridor within the City of St. Louis which connects to a MoDOT crossing of I-64. T² just completed data collection utilizing both video and traditional methods, which will now be used to evaluate potential design alternatives (including number of lanes, terminal intersections designs, and non-motorized), and evaluate MOT alternatives to plan for closure of a significant arterial link.



Regional ITS Data Sharing Initiative (RIDSi) – St. Charles County: MoDOT LPA Project



T² is part of a multidisciplinary team selected to design, depoly, and operate a cloud-based data warehouse solution for the initial deployment of RIDSi. The warehouse is being designed to collect raw data from a variety of sources, normalize it into consistent formats, and then archive and/or deliver this information back to contributing partners and agencies. The project includes 13 unique milestones and deliverables, T² is a strategic partner for 3 of them and assisting with 6 others.