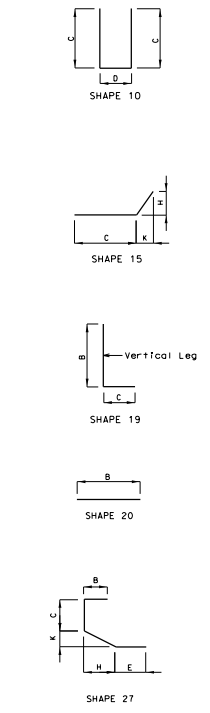


BILL OF REINFORCING STEEL

NO.	REQ'D.	MARK NO.	LOCATION	SHAPE NO.	STIRRUP (S)	EPOXY (E)	VARIES (V)	NO. EACH	DIMENSIONS						NOMINAL LENGTH	ACTUAL LENGTH	WEIGHT
									B	C	D or F	E	H	K			
									FT.	FT.	FT.	FT.	FT.	FT.			

BILL OF REINFORCING STEEL

NO.	REQ'D.	MARK NO.	LOCATION	SHAPE NO.	STIRRUP (S)	EPOXY (E)	VARIES (V)	NO. EACH	DIMENSIONS						NOMINAL LENGTH	ACTUAL LENGTH	WEIGHT
									B	C	D or F	E	H	K			
									FT.	FT.	FT.	FT.	FT.	FT.			



BAR SIZE	SPLICE LENGTH		BAR SIZE	MAX BAR LENGTH	
	NON-EPOXY	EPOXY		NON-EPOXY	EPOXY
#4	21 IN.		#4	60 FT.	
#6	26 IN.		#6	60 FT.	
#8	31 IN.		#8	60 FT.	
#9	39 IN.		#9	60 FT.	
#10	51 IN.		#10	60 FT.	
#11	65 IN.		#11	60 FT.	
#12	82 IN.		#12	60 FT.	
#14	101 IN.		#14	60 FT.	

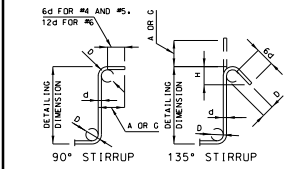
NOTE: THE BAR LIST IS BASED ON THE MISSOURI STANDARD PLANS. THIS BAR LIST IS FOR QUANTITY ESTIMATION PURPOSE ONLY AND SHALL BE VERIFIED OR MODIFIED BY THE CONTRACTOR.

DATE PREPARED: 6/13/2013
 ROUTE: * MO *
 DISTRICT: BR *
 COUNTY: *
 JOB NO.:
 CONTRACT NO.:
 PROJECT NO.:
 BRIDGE NO.:

MISSOURI HIGHWAYS AND TRANSPORTATION COMMISSION

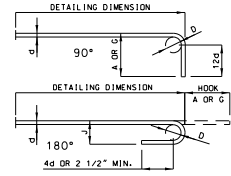


105 WEST CAPITOL BLVD. JEFFERSON CITY, MO 65102
 1-888-ASK-MDOT (1-888-275-6636)



BAR SIZE	D (IN.)	90° HOOK		135° HOOK	
		A OR C	H	A OR C	H
#4	2"	4 1/2"	4 1/2"	3"	3"
#5	2 1/2"	6"	5 1/2"	3 3/4"	3 3/4"
#6	4 1/2"	12"	8"	4 1/2"	4 1/2"

NOTE: UNLESS OTHERWISE NOTED, DIAMETER "D" IS THE SAME FOR ALL BENDS AND HOOKS ON A BAR.



BAR SIZE	D (IN.)	180° HOOKS		90° HOOKS
		A OR C	J	
#4	3"	6"	4"	8"
#5	3 3/4"	7"	5"	10"
#6	4 1/2"	8"	6"	12"
#7	5 1/4"	10"	7"	14"
#8	6"	11"	8"	16"
#9	9 1/2"	15"	11 3/4"	19"
#10	10 3/4"	17"	13 1/4"	22"
#11	12"	19"	14 3/4"	24"

NOTE: ALL STANDARD HOOKS AND BENDS OTHER THAN 180 DEGREE ARE TO BE BENT WITH SAME PROCEDURE AS FOR 90 DEGREE STANDARD HOOKS. HOOKS AND BENDS SHALL BE IN ACCORDANCE WITH THE PROCEDURES AS SHOWN ON THIS SHEET. FB = BARS MAY BE BENT IN FIELD TO FIT. E = EPOXY COATED REINFORCEMENT. S = STIRRUP. V = BAR DIMENSIONS VARY IN EQUAL INCREMENTS BETWEEN DIMENSIONS SHOWN ON THIS LINE AND THE FOLLOWING LINE. A BLANK IN THE SECOND LINE REPRESENTS THE SAME BAR DIMENSION AS THAT IN THE FIRST LINE. IT IS THE CONTRACTOR'S RESPONSIBILITY TO ADD A SPLICE LENGTH TO A BAR LENGTH WHICH EXCEEDS ITS MAXIMUM ALLOWABLE LENGTH. NO. EA. = NUMBER OF BARS OF EACH LENGTH. NOMINAL LENGTHS ARE BASED ON OUT TO OUT DIMENSIONS SHOWN IN BENDING DIAGRAMS AND ARE LISTED FOR FABRICATORS USE. (NEAREST INCH). ACTUAL LENGTHS ARE MEASURED ALONG CENTERLINE BAR TO THE NEAREST INCH. PAYMENTS ARE BASED ON ACTUAL LENGTHS. REINFORCING STEEL (GRADE 60) F_y = 60,000 PSI.

Detailed Checked

Note: This drawing is not to scale. Follow dimensions. Sheet No. of