

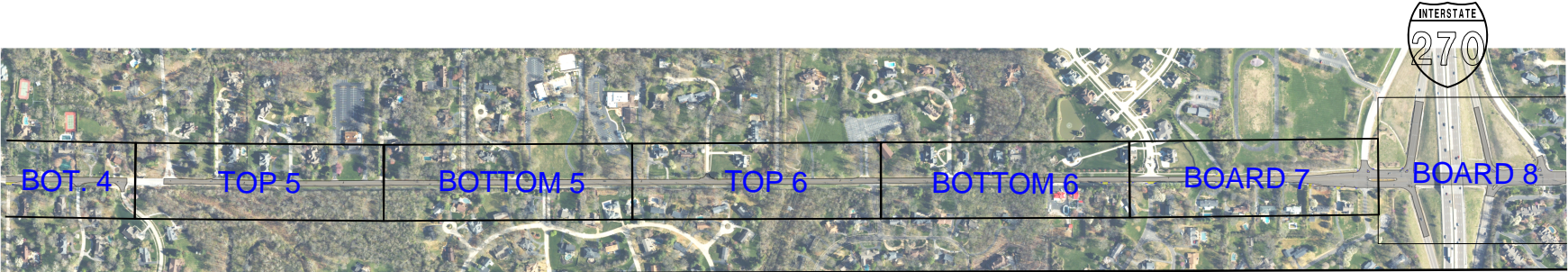
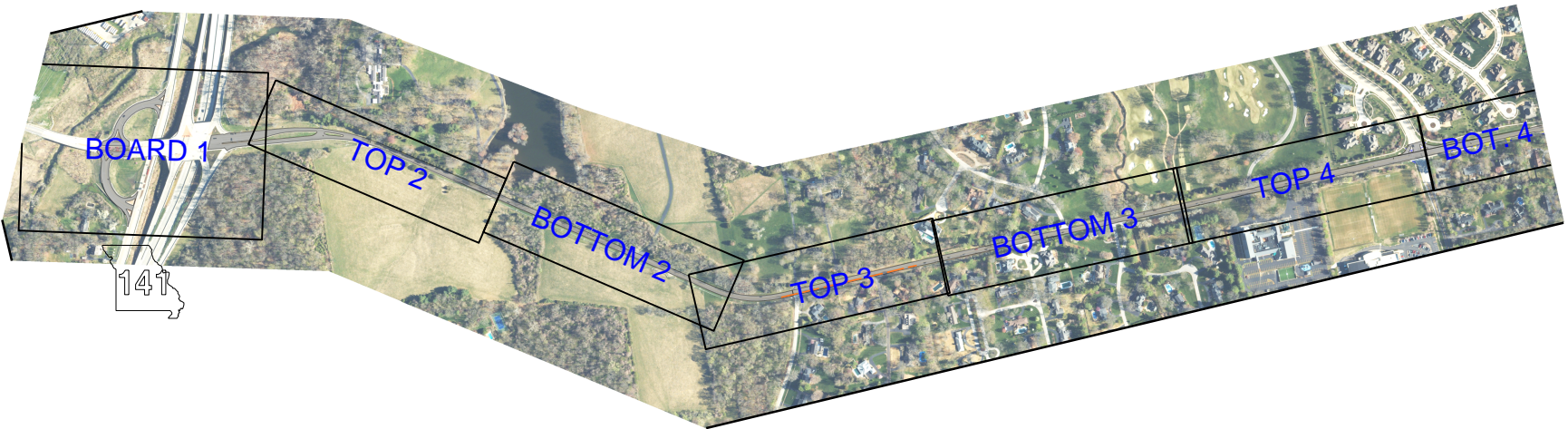
# PROJECT LOCATION MAP



ROUTE AB ADA, SIGNAL, AND PAVEMENT IMPROVEMENTS

ST. LOUIS COUNTY

PRELIMINARY PLANS - SUBJECT TO CHANGE



ROUTE AB (LADUE ROAD)  
MODOT JOB NO. J6S3633

1" = 200'

DATE PREPARED 4/20/2023	
ROUTE AB	STATE MO
DISTRICT SL	SHEET NO. 1
COUNTY ST. LOUIS	
JOB NO. J6S3633	
CONTRACT ID.	
PROJECT NO.	
BRIDGE NO.	
DESCRIPTION	
DATE	
MISSOURI HIGHWAYS AND TRANSPORTATION COMMISSION	
105 WEST CAPITOL JEFFERSON CITY, MO 65102 1-888-ASK-MODOT (1-888-273-6636)	
PRELIMINARY DISPLAY TITLE PAGE ROUTE AB (LADUE RD)	

IF A SEAL IS PRESENT ON THIS SHEET IT HAS BEEN ELECTRONICALLY SEALED AND DATED.