



**Missouri's
Local
Program**
*for community
development*

COVER SHEET

(This must accompany your firm's letter of interest and does not count in the page limit)

Firm's Full Legal
Name:

Thouvenot, Wade & Moerchen, Inc. (TWM, Inc.)

Firm Contact Name:

Jeff Reis, PE, PTOE

Contact Email
Address:

jreis@twm-inc.com

Firm's Mailing Address:

3701 S. Lindbergh Blvd., Suite 100

St. Louis, MO 63127

Work Category:

- Roadway Design
- Trails & Sidewalks
- Construction Inspection
- Traffic Engineering & TEAP
- Structures
- Environmental
- Historic Preservation
- Multimodal Planning / Systems and Facilities Design
- Transportation Planning – **NEW CATEGORY**



December 12, 2025

Missouri's Local Program
LPAoncall@modot.mo.gov

Re: Letter of Interest for On-Call Professional Services—2026-2029, Construction Inspection

Dear Members of the Selection Committee:

We're pleased to submit our interest in pre-qualification with Missouri's Local Program and to be considered for the LPA on-call list. TWM has broad construction inspection experience for DOTs, LPAs, and other entities like private developments. With a strong performance history, exceptional staff, and broad experience in local, state, and federal projects, TWM consistently delivers for our clients. We combine the resources of a large firm with the responsive, personal service you expect from a local partner. **We are partnering with firm UES to provide specialized geotechnical engineering, materials testing, and supplemental inspection services.**

GENERAL EXPERIENCE OF FIRM

For more than 79 years, TWM has delivered **Exceptional Service. Nothing Less.** Our construction inspection team brings deep, hands-on experience across transportation and infrastructure projects of all sizes. While our transportation group is well-versed in roadway, bridge, and traffic engineering design, our inspection staff leverages this design knowledge to ensure projects are built safely, accurately, and in full compliance with plans and specifications.

Our approach emphasizes clear communication, proactive field coordination, and practical, real-time problem solving. We understand that construction inspection requires more than observation—it demands anticipating issues, managing and maintaining detailed documentation, and working closely with contractors to keep projects moving efficiently. Whether we're reviewing quantities, responding to unforeseen field conditions, or ensuring quality construction practices, TWM provides dependable, knowledgeable support that helps deliver successful projects. Some of our recent projects related to construction inspection are included below:

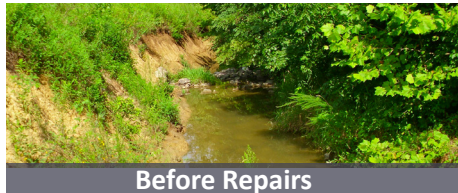


**McKnight Road Sidewalk & Resurfacing
STP-5609(615) & TAP-5412(605)**

Supported construction with the preconstruction meeting, daily inspections, project/payment diary, progress reports, invoices, change orders, materials testing, shop drawing reviews, and ADA. Scope included surveying, milling and HMA overlay, ADA-compliant 6' sidewalk, drainage upgrades, and signal replacement.

Funding | Federal
Owner | City of Richmond Heights, MO

Reference | Chris Boyd, Public Works Director; 314.645.2277
Cost | \$1.4 million (est); \$1.378 million (act)
Timeline | 2018
Team | Joe Heyden; Tom Braun



Before Repairs

**MetroLink Slope Rehabilitation,
Phase II**

Provided construction phase services in addition to mitigation design, repair, reinforcement, construction of retaining walls and structures, re-vegetation, soil remediation, soil strengthening for greater slope/culvert protection, replacement/repair of existing drainage systems, ballast retainers at junction boxes, 1.5 miles of gravel access road, hydraulic analysis, permitting, and land acquisition.

Funding | Local
Owner | Bi-State Development/St. Clair County Transit District (SCCTD)
Reference | Fred Bakarich; 314.982.1400
Cost | \$5.5 million (est)
Timeline | 2016
Team | Tom Braun



Lebanon Street Reconstruction

Construction observation services included oversight for nine blocks of streets including concrete gutter, asphalt pavements, storm sewer design, sidewalks, ADA-compliant curb ramps, box culverts, and intersection details. TWM also provided topographic and boundary surveys, coordinated with utilities, land acquisition documentation, and developed final plans, specifications, and estimates.

Funding | Local
Owner | City of Mascoutah, IL
Reference | Sal Elkott, City Engineer; 618.566.2964
Cost | \$2,218,996 (est); \$2,203,008 (low bid)
Timeline | 2021
Team | Seth Henry; Jeff Reis, PE, PTOE



First Street Reconstruction

For this fast-track project along several residential blocks, TWM completed construction staking and daily observation, and coordinated materials testing during construction. Design and construction included new concrete gutter, asphalt paving, drainage facilities, and a bench for future sidewalk and curb ramps. TWM also managed utility coordination, developed plans, specifications, estimates, and prepared bid documents.

Funding | Local

Owner | City of Shiloh, IL

Reference | Brenda Kern, Village Clerk/Administrator; 618.632.1022

Cost | \$426,789

Timeline | 2019 (design)

Team | Seth Henry; Jeff Reis, PE, PTOE



Onyx Drive Reconstruction

Completed construction staking and daily observation and coordination for materials testing during construction. TWM developed plans for total reconstruction and widening of approx. 800'. Improvements included new concrete gutter, asphalt pavement, drainage facilities, sidewalk, and an additional turn lane onto IL Route 4. TWM also coordinated with utilities and prepared plans, specifications, and estimates, as well as bid documents.

Funding | Motor fuel tax funds

Owner | City of Mascoutah, IL

Reference | Sal Elkott, City Engineer; 618.566.2964

Cost | \$628,320.54

Timeline | 2025

Team | Seth Henry; Jeff Reis, PE, PTOE; Josh Stein, PE; Emily Fisher, PE



Under Construction

McAllister Street Reconstruction

Construction services for 500' of roadway. Improvements included new concrete gutter, asphalt pavement, storm sewer design, sidewalk, and curb ramps. TWM also provided topographic and boundary surveys and utility coordination. TWM worked with IDOT, FHWA, and the City to develop plans, specifications, and estimates. Design services included raising the profile in order to fit the new storm sewer system underneath the roadway.

Funding | Federal (STP grant)

Owner | City of Lebanon, IL

Reference | Cody Terry, Streets Superintendent; 618.537.4976

Cost | \$855,048.67

Timeline | 2025

Team | Seth Henry; Jeff Reis, PE, PTOE; Michelle Schwierjohn, PE, PTOE

QUALIFICATIONS OF PERSONNEL

We propose that Seth Henry serve as Project Manager. He will be supported by a dedicated team of local TWM engineers and technical staff with specialized experience in field inspecting and construction observation services. The team's combined experience brings TWM the insight needed to apply and adapt their expertise when challenging or unforeseen situations may arise during construction. Key staff members are shown below:



Seth Henry | Project Manager 21 Years Experience

Seth joined TWM with 7+ years of experience as a construction superintendent on federal projects. At TWM, he performs construction

observation services and documentation of contract quantities. He is also involved with the daily coordination of engineering-based functions on the job site.

- Front Street Water Main Replacement
- Boul Avenue Bike Trail
- Shiloh Station Road Reconstruction



Tom Braun | Field Inspector 39 Years Experience

Tom's experience includes sewer testing, flow monitoring, video inspection, surveying, courthouse research, erosion

control protection plan and construction observation. He has performed bridge plans, mine reclamation, and transportation projects for local agencies and municipalities and construction observation.

- Front Street Water Main Replacement
- Air Mobility Trail
- Shiloh Station Road Reconstruction



Joe Heyden | Lead Inspector 42 Years Experience

Joe is experienced in construction observation and surveying. He primarily provides construction observation services

and documentation of contract quantities. He is also involved with the daily coordination of engineering-based functions on the respective contract site.

- Chesterfield Parkway West Reconstruction
- Front Street Water Main Replacement
- Kennedy Street Improvements



Jeff Bevirt | Field Inspector 43 Years Experience

Jeff is experienced in the installation, operation and maintenance of wastewater collection systems and treatment plants

that have mechanical barscreening, influent pump station, secondary treatment, chemical feed addition, tertiary filters, UV disinfection, chlorine disinfection, and sludge filter presses.

- Front Street Water Main Replacement
- Air Mobility Trail
- Boul Avenue Bike Trail



Jeff Reis, PE, PTOE | Lead Engineer & Design Liaison | 20 Years Experience

Jeff's experience includes a focus on the design and management of municipal transportation and traffic projects. He

is skilled in the analysis of drawings, hydrological characteristics, and topographical data to plan and design municipal street and rural roadway projects to DOT standards.

- Air Mobility Trail
- Boul Avenue Bike Trail
- Bi-State/METRO Pavement Management Program



Tony Roth, PE | Geotechnical Engineer 19 Years Experience

Tony conducts geotechnical investigations, construction materials testing and special inspections, subsurface explorations by visual inspection, drilling, sampling, and in-situ testing, lab testing on soil and rock samples, and pre-field work.

- On-Call Contract | Wentzville, MO
- McKelvey Wood Trail, Phase II | Maryland Heights, MO
- Spring Forest Drive | Arnold, MO

FAMILIARITY & CAPABILITY

TWM has a proven record of meeting client expectations. With the combined technical expertise of our key staff and the depth of our firm's services, we bring decades of hands-on experience and a comprehensive, practical understanding of construction inspection from start to finish. We work closely with contractors on design-build projects and support every phase of construction—from layout staking and supplemental surveying to daily inspection, materials testing, documentation, and compliance checks.

Familiarity with DOT, federal, and LPA standards positions TWM to manage procedures, reporting, and compliance. That's why our clients trust us to maintain rigorous quality assurance and regulatory compliance throughout each project. Our proven track record delivering reliable, responsive inspection services makes us a strong partner for municipalities, agencies, and developers seeking consistent, capable oversight from ground-breaking through project closeout.

ACCESSIBILITY

As both prime and sub-consultant, TWM provides responsive, reliable service to our clients. Our team structure ensures that experienced staff are available to address questions, resolve issues, and keep work moving. We emphasize open and timely communication through direct access to project field inspectors, construction observation managers, technicians, and engineers via virtual meeting platforms such as Zoom and Teams. This commitment to accessibility allows us to work closely and collaboratively with LPA and MoDOT staff, adapting to project needs and providing dependable support throughout each phase of the assignment.

WHY CHOOSE TWM?



Experienced Staff & Technical Competence | With decades of history in engineering, surveying, and transportation design, TWM's team brings a wealth of knowledge across disciplines. This background ensures thorough understanding of technical requirements, field conditions, and agency standards, enabling consistent, reliable inspection services.



Local Presence & Client-Focused Service | As a firm grounded in multiple regional offices, TWM offers local knowledge and accessibility, paired with the professionalism and resources of a larger firm. This blend ensures attentive, personalized support without sacrificing capability.



Responsive, Field-Driven Performance | TWM understands that construction sites are dynamic, which requires on-call responsiveness, rapid problem resolution, and practical field experience. We address unforeseen issues without compromise and keep projects on schedule.



Integrated Design-to-Construction Services & Perspective | Because we also provide engineering design and planning services, we can help bridge the gap between design intent and construction reality. This insight supports better quality control, fewer change orders, and smoother project delivery. By offering comprehensive construction-phase capabilities—from layout staking, survey support, and materials testing to inspection, documentation, progress reporting, ADA compliance checks, and construction oversight—clients benefit from a single firm that can handle all facets of inspection and field oversight.

We look forward to partnering with you to ensure your projects are completed safely, efficiently, and to the highest standards. This commitment to quality is reflected in our mission and promise of **Exceptional Service. Nothing Less.**

Respectfully,

TWM, Inc.



Seth Henry | Project Manager
618.624.4488 | shenry@twm-inc.com



Transportation • Structural • Survey/Geospatial • Land Development • Water Infrastructure



our core competencies: TWM, Inc. is a 100% employee-owned firm that specializes in civil and structural engineering and geospatial services. Over the last 79 years, we have successfully completed projects for government agencies throughout Missouri, Illinois, the Midwest and beyond, including:

DOTs | Municipalities | Counties | Federal | Military | Transit Districts
St. Louis Metropolitan Sewer District | Parks & Recreation Departments

As a full-service engineering consultant, TWM prides itself on being able to provide a broad range of design projects and related services. TWM has diversified into five primary disciplines:

- Transportation
- Structural
- Survey/Geospatial
- Land Development
- Water Infrastructure

We have a long history of serving both private and public sector clients. Those clients and the communities we have served can attest to our focus on the details, our commitment to project schedules, and our passion in solving problems. We care about being a trusted partner on your projects and getting the job done right.

EXCEPTIONAL SERVICE. NOTHING LESS

TWM-INC.COM



range of capabilities

At TWM, we have the resources of a larger firm and the personalized customer service of a small, family-oriented firm working for local communities. With 9 office locations in 3 states, our firm is an ideal size—large enough to take on major projects but small enough to respond to your needs quickly.

We're capable of providing a **broad range of design projects** and related services for nearly any type of project, including:

- Roadways, highways, and streetscapes
- Trails, sidewalks, multi-modal and pedestrian facilities
- Traffic engineering analysis, traffic studies, and signal design
- Bridges, retaining walls, large structures, and buildings
- Construction inspection services
- Land surveying, GIS, mapping, reality capture data collection, and engineered layout
- Recreational, commercial, industrial, institutional, and residential sites
- Municipal engineering/consulting
- Water distribution, water systems, and treatment
- Wastewater collection and treatment systems
- Stormwater management
- Video inspection of pipes and culverts and air testing

by the numbers

160+ total employees, including:

- 40 licensed PEs
- 7 licensed SEs
- 2 PTOEs
- 15 engineers in training
- 5 construction inspectors
- 16 licensed land surveyors
- 7 surveyors in training
- 37 simultaneous survey crews
- 8 FAA Part 107 Certified Remote Pilots
- 7 terrestrial LiDAR scanners
- 5 UAVs (drones)
- 1 mobile LiDAR unit
- 1 NavVis wearable mobile mapping unit



EXCEPTIONAL SERVICE. NOTHING LESS.

That's our mission statement and our promise to you. Our success is built upon a solid reputation for getting the job done right. We are particularly proud that we retain approximately 95% of our customers' business. Our resolution of challenges is what sets us apart, and based on our level of repeat business, we think our clients agree.

company data

- Self-Certified Small Business
- 100% ESOP-owned
- 11 states in which TWM & TWM engineers hold licenses: MO, IL, TN, KY, AR, IN, GA, FL, TX, MN, MT
- 11 states in which TWM and TWM licensed land surveyors hold licenses: MO, IL, TN, KY, AR, IN, GA, FL, WI, OR, CA

corporate headquarters

4940 Old Collinsville Road
Swansea, IL 62226
618.624.4488

office locations

MO:

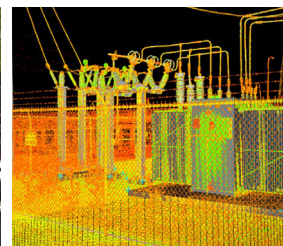
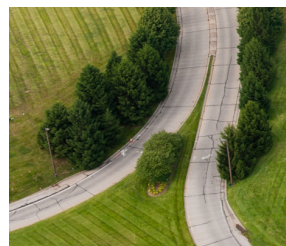
St. Louis
Columbia

IL:

Swansea (HQ)
Peoria
Decatur
Glen Carbon
Columbia

TN:

Franklin
Chattanooga



roadway design

Our transportation group focuses on the movement of people and goods—providing safe, convenient, and economical solutions. Our designs bring innovative solutions to reduce congestion and minimize future maintenance costs. We have the staff, tools, and resources to solve a myriad of transportation engineering problems you face. Our roadway expertise includes:

- New alignments
- Reconstruction and widening projects on interstates
- Rural and urban highways
- Local streets and bridges
- Bike trails and sidewalks
- Multi-modal enhancements

Cognizant that our clients always have budgets to meet, we strive for solutions that not only work, but also work smart.

J6S1718/B/C Route 100 (Manchester Road) Rehabilitation

TWM completed a detailed conceptual design in under three months, and then designed preliminary plans, right-of-way plans, and final plans, specifications, and estimate. Key elements included access management improvements, new pavement and resurfacing, ADA-compliant pedestrian facilities, and drainage/traffic signal upgrades.



4.9 MoDOT Performance Rating

J6P3242/B Route 21 Roadway Modifications & Intersection Improvements

In an effort to increase overall safety by reducing left turn lane conflicts, TWM designed southbound left-turn lanes at three intersections. Scope included roadway widening for new left turn lane, full depth shoulders, traffic control, right-of-way plans, guardrail analysis, AutoTURN analysis, entrance design, public involvement, hydraulic analysis, and drainage structures.



J6S3375 Route 30 Slide Repair

Scope included repair of a failing fill slope along the eastbound lanes, west of Ottomeyer Road. Services were needed after two slide locations began to move. TWM's team performed a geotechnical assessment and produced a design to excavate the failed material and construct a rock wedge slope repair and under drain installation to mitigate the slope failure. Guardrail calculations were completed for replacement of the guardrail at the top of the slope.



trails & sidewalks

TWM's engineers have unique expertise in bike trails, shared-use paths, and shared-use structures as well as ADA-compliant sidewalks and curb ramps. Our firm is considered one of the top pedestrian and bikeway trail planning and design firms serving southern Illinois and Missouri. Whether it's for work or play, our trails are designed with aesthetics, functionality, and cost-effectiveness in mind.

Grant's Trail Pedestrian Bridge Replacement

TWM repaired and replaced three box culvert structures and two pedestrian bridges that were failing. Five locations were analyzed for repairs, and plans, specifications, and estimates were developed. Designs included replacement at one location with dual 24" culverts, three locations with large box culverts and one location of a new pedestrian bridge and trail realignment. Slope stabilization was implemented to reduce erosion of the creek sides.



Pardee Road & Elmont Lane New Sidewalks

This project consisted of adding sidewalks to city streets to connect neighborhoods with nearby elementary schools. Our sidewalk design looked at ways to minimize disturbance to adjacent landowners, such as reducing widths of the pedestrian path across a driveway or eliminating the tree lawn for short stretches. Public engagement was conducted early in plan development to guide layout and locations.



structures

We focus on delivering bridge designs that are cost-effective, safe, easily constructible, and durable. Our typical projects include:

- Repair and rehabilitation
- Box culverts and wingwalls
- Deck and superstructure replacements
- Deck overlays
- Load ratings and bridge condition reports (BCR)
- “Signature” pedestrian bridges
- Rails-to-trails conversion of old bridges
- Foundations for pre-fabricated trusses
- Pedestrian accommodations on roadway bridges
- Inspections

J553242 Route A over Third Creek (Gasconade County) & Route D over Mistaken Creek (Osage County)

TWM provided preliminary and final bridge design, hydraulics, and plan preparation for conceptual, right-of-way and final PS&E of these bridge replacement projects. Route A was a multiple-span prestressed concrete I-girder bridge that was lengthened 20’ to widen the creek channel and address erosion issues. Route D used prestressed concrete spread box beams, reducing structure depth for improved hydraulics.



J6P3288 Route 21 Pavement Improvements, ADA, & Bridge Rehabilitation

TWM is developing final bridge rehab plans for 11 bridges along Route 21. TWM performed a site visit with MoDOT to confirm the project scope, which consists of a bridge re-deck, bridge deck overlays, joint replacements, and various other structural repairs.

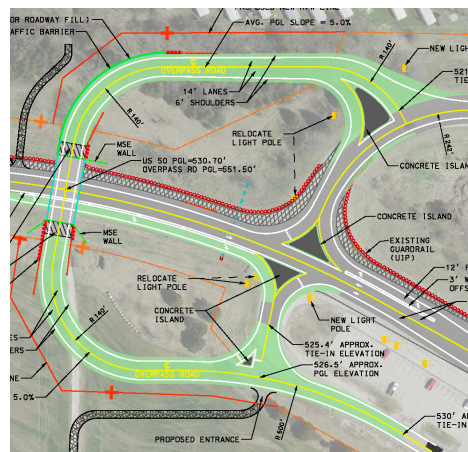


traffic engineering

With two PTOs on staff, our traffic engineering team brings decades of experience to help communities enhance mobility, improve safety, and support sustainable growth. We combine advanced data analysis, practical design standards, and local expertise to deliver comprehensive traffic solutions—from signal timing and roadway geometry to pedestrian safety and corridor planning.

J6P2350 Safety Improvements Study at U.S. Route 50/Route AT

As one of the short-listed teams invited to provide safety improvements for the MoDOT “Road to Saving Lives” Design-Build project, TWM conducted a traffic study and reviewed the viability of five intersection configurations. TWM authored a conceptual study report to record the findings and recommend a preferred option. Our team analyzed the geometry of each concept based on traffic modeling, explored the cost and methodology of building each option, and reviewed utility and environmental impacts.



construction inspection

Our services put experts on-site and include engineered layout, construction observation, utility coordination, documentation of materials and quantities, daily record keeping of construction activity, documentation of contractor compliance with plans and specifications, and the processing of pay requests and change orders.

MetroBikeLink Trail System Extension

TWM has provided on-going design and construction phase services to the St. Clair County Transit District (SCCTD). Under a Master Agreement, TWM has designed 16 miles of the MetroBikeLink Trail from Fairview Heights Station to Scott AFB Station. Services include construction observation of contractor’s work, daily log of progress, coordination with METRO for JHA’s and track allocation meetings, real-time checks on asphalt paving for thickness and proper placement, and staking verification.





Structural • Survey/Geospatial • Transportation • Land Development • Water Infrastructure



our core competencies: TWM, Inc. is a 100% employee-owned firm that specializes in civil and structural engineering and geospatial services. Over the last 79 years, we have successfully completed projects for government agencies throughout Missouri, Illinois, the Midwest and beyond, including:

DOTs | Municipalities | Counties | Federal | Military | Transit Districts
St. Louis Metropolitan Sewer District | Parks & Recreation Departments

As a full-service engineering consultant, TWM prides itself on being able to provide a broad range of design projects and related services. TWM has diversified into five primary disciplines:

- Structural
- Survey/Geospatial
- Transportation
- Land Development
- Water Infrastructure

We have a long history of serving both private and public sector clients. Those clients and the communities we have served can attest to our focus on the details, our commitment to project schedules, and our passion in solving problems. We care about being a trusted partner on your projects and getting the job done right.

EXCEPTIONAL SERVICE. NOTHING LESS

TWM-INC.COM



range of capabilities

At TWM, we have the resources of a larger firm and the personalized customer service of a small, family-oriented firm working for local communities. With 9 office locations in 3 states, our firm is an ideal size—large enough to take on major projects but small enough to respond to your needs quickly.

We're capable of providing a **broad range of design projects** and related services for nearly any type of project, including:

- Bridges, retaining walls, large structures, and buildings
- Land surveying, GIS, mapping, reality capture data collection, and engineered layout
- Roadways, highways, and streetscapes
- Trails, sidewalks, multi-modal and pedestrian facilities
- Traffic engineering analysis, traffic studies, and signal design
- Construction inspection services
- Recreational, commercial, industrial, institutional, and residential sites
- Municipal engineering/consulting
- Water distribution, water systems, and treatment
- Wastewater collection and treatment systems
- Stormwater management
- Video inspection of pipes and culverts and air testing

by the numbers

160+ total employees, including:

40 licensed PEs

7 licensed SEs

2 PTOEs

15 engineers in training

5 construction inspectors

16 licensed land surveyors

7 surveyors in training

37 simultaneous survey crews

8 FAA Part 107 Certified Remote Pilots

7 terrestrial LiDAR scanners

5 UAVs (drones)

1 mobile LiDAR unit

1 NavVis wearable mobile mapping unit



EXCEPTIONAL SERVICE. NOTHING LESS.

That's our mission statement and our promise to you. Our success is built upon a solid reputation for getting the job done right. We are particularly proud that we retain approximately 95% of our customers' business. Our resolution of challenges is what sets us apart, and based on our level of repeat business, we think our clients agree.

company data

- Self-Certified Small Business
- 100% ESOP-owned
- 11 states in which TWM & TWM engineers hold licenses: MO, IL, TN, KY, AR, IN, GA, FL, TX, MN, MT
- 11 states in which TWM and TWM licensed land surveyors hold licenses: MO, IL, TN, KY, AR, IN, GA, FL, WI, OR, CA

corporate headquarters

4940 Old Collinsville Road
Swansea, IL 62226
618.624.4488

office locations

MO:

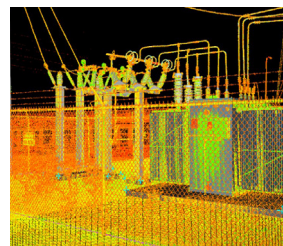
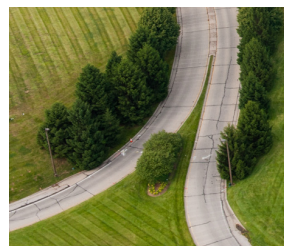
St. Louis
Columbia

IL:

Swansea (HQ)
Peoria
Decatur
Glen Carbon
Columbia

TN:

Franklin
Chattanooga



roadway design

Our transportation group focuses on the movement of people and goods—providing safe, convenient, and economical solutions. Our designs bring innovative solutions to reduce congestion and minimize future maintenance costs. We have the staff, tools, and resources to solve a myriad of transportation engineering problems you face. Our roadway expertise includes:

- New alignments
- Reconstruction and widening projects on interstates
- Rural and urban highways
- Local streets and bridges
- Bike trails and sidewalks
- Multi-modal enhancements

Cognizant that our clients always have budgets to meet, we strive for solutions that not only work, but also work smart.

J6S1718/B/C Route 100 (Manchester Road) Rehabilitation

TWM completed a detailed conceptual design in under three months, and then designed preliminary plans, right-of-way plans, and final plans, specifications, and estimate. Key elements included access management improvements, new pavement and resurfacing, ADA-compliant pedestrian facilities, and drainage/traffic signal upgrades.



J6P3242/B Route 21 Roadway Modifications & Intersection Improvements

In an effort to increase overall safety by reducing left turn lane conflicts, TWM designed southbound left-turn lanes at three intersections. Scope included roadway widening for new left turn lane, full depth shoulders, traffic control, right-of-way plans, guardrail analysis, AutoTURN analysis, entrance design, public involvement, hydraulic analysis, and drainage structures.



J6S3375 Route 30 Slide Repair

Scope included repair of a failing fill slope along the eastbound lanes, west of Ottomeyer Road. Services were needed after two slide locations began to move. TWM’s team performed a geotechnical assessment and produced a design to excavate the failed material and construct a rock wedge slope repair and under drain installation to mitigate the slope failure. Guardrail calculations were completed for replacement of the guardrail at the top of the slope.



trails & sidewalks

TWM’s engineers have unique expertise in bike trails, shared-use paths, and shared-use structures as well as ADA-compliant sidewalks and curb ramps. Our firm is considered one of the top pedestrian and bikeway trail planning and design firms serving southern Illinois and Missouri. Whether it’s for work or play, our trails are designed with aesthetics, functionality, and cost-effectiveness in mind.

Grant’s Trail Pedestrian Bridge Replacement

TWM repaired and replaced three box culvert structures and two pedestrian bridges that were failing. Five locations were analyzed for repairs, and plans, specifications, and estimates were developed. Designs included replacement at one location with dual 24” culverts, three locations with large box culverts and one location of a new pedestrian bridge and trail realignment. Slope stabilization was implemented to reduce erosion of the creek sides.



Pardee Road & Elmont Lane New Sidewalks

This project consisted of adding sidewalks to city streets to connect neighborhoods with nearby elementary schools. Our sidewalk design looked at ways to minimize disturbance to adjacent landowners, such as reducing widths of the pedestrian path across a driveway or eliminating the tree lawn for short stretches. Public engagement was conducted early in plan development to guide layout and locations.



structures

We focus on delivering bridge designs that are cost-effective, safe, easily constructible, and durable. Our typical projects include:

- Repair and rehabilitation
- Box culverts and wingwalls
- Deck and superstructure replacements
- Deck overlays
- Load ratings and bridge condition reports (BCR)
- “Signature” pedestrian bridges
- Rails-to-trails conversion of old bridges
- Foundations for pre-fabricated trusses
- Pedestrian accommodations on roadway bridges
- Inspections

J553242 Route A over Third Creek (Gasconade County) & Route D over Mistaken Creek (Osage County)

TWM provided preliminary and final bridge design, hydraulics, and plan preparation for conceptual, right-of-way and final PS&E of these bridge replacement projects. Route A was a multiple-span prestressed concrete I-girder bridge that was lengthened 20’ to widen the creek channel and address erosion issues. Route D used prestressed concrete spread box beams, reducing structure depth for improved hydraulics.



J6P3288 Route 21 Pavement Improvements, ADA, & Bridge Rehabilitation

TWM is developing final bridge rehab plans for 11 bridges along Route 21. TWM performed a site visit with MoDOT to confirm the project scope, which consists of a bridge re-deck, bridge deck overlays, joint replacements, and various other structural repairs.

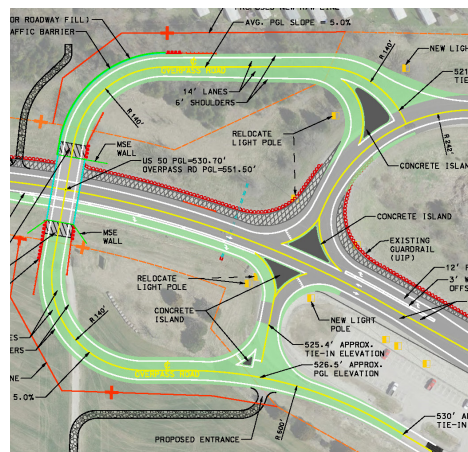


traffic engineering

With two PTOs on staff, our traffic engineering team brings decades of experience to help communities enhance mobility, improve safety, and support sustainable growth. We combine advanced data analysis, practical design standards, and local expertise to deliver comprehensive traffic solutions—from signal timing and roadway geometry to pedestrian safety and corridor planning.

J6P2350 Safety Improvements Study at U.S. Route 50/Route AT

As one of the short-listed teams invited to provide safety improvements for the MoDOT “Road to Saving Lives” Design-Build project, TWM conducted a traffic study and reviewed the viability of five intersection configurations. TWM authored a conceptual study report to record the findings and recommend a preferred option. Our team analyzed the geometry of each concept based on traffic modeling, explored the cost and methodology of building each option, and reviewed utility and environmental impacts.



construction inspection

Our services put experts on-site and include engineered layout, construction observation, utility coordination, documentation of materials and quantities, daily record keeping of construction activity, documentation of contractor compliance with plans and specifications, and the processing of pay requests and change orders.

MetroBikeLink Trail System Extension

TWM has provided on-going design and construction phase services to the St. Clair County Transit District (SCCTD). Under a Master Agreement, TWM has designed 16 miles of the MetroBikeLink Trail from Fairview Heights Station to Scott AFB Station. Services include construction observation of contractor’s work, daily log of progress, coordination with METRO for JHA’s and track allocation meetings, real-time checks on asphalt paving for thickness and proper placement, and staking verification.

