

### The Sign Buddy



#### Description and Benefit

The Sign Buddy was designed to make putting up signs safer, easier and more efficient. Traditionally, the ladder operator had to balance and carry nuts and bolts while installing the heavy sign, making the process challenging and unsafe. The Sign Buddy allows the ground operator to securely slide the sign into the PVC pipe with grooves, then lift it to the post. This enables the ladder operator to focus solely on bolting the sign into place, reducing the time spent on the ladder and improving safety. The result is a quicker, more effective installation process. This innovation is the ultimate solution for efficient sign mounting.

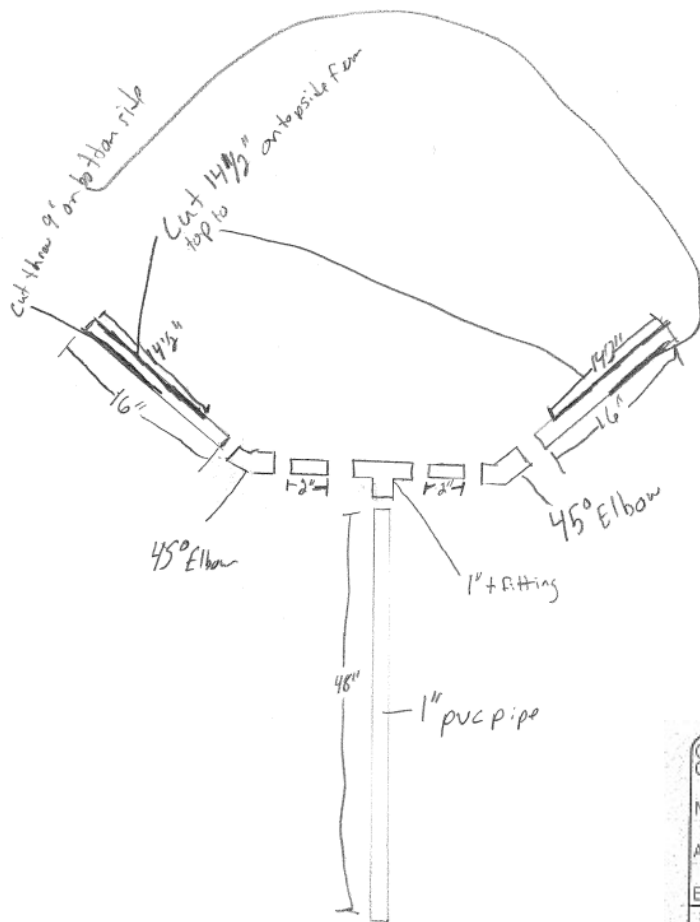
#### For More Information Contact

**Northwest District – Maintenance**

Bailey Small at [Bailey.Small@modot.mo.gov](mailto:Bailey.Small@modot.mo.gov) or 660-258-7297.

**Northwest District – Maintenance**

Donny Smith at [Donald.Smith@modot.mo.gov](mailto:Donald.Smith@modot.mo.gov) or 660-258-7297.



All pipe is 1" and all fittings are 1"

Customer's Order No.		Date 11-76		2074	
Name H. O. >		Address (9853 3rd)			
Email		Phone / Cell:			
SOLD BY	CASH	C.O.D.	CHARGE	ON ACCT.	MOSE. RETD.
			<input checked="" type="checkbox"/>		
					PAID OUT
					LAYAWAY
QUAN.	DESCRIPTION	PRICE	AMOUNT		
2	Wing nuts	89	1.78		
75'	1" PVC Pipe	109	8.18		
1	1" Tee PVC		7.29		
2	1" 45° Elbow	135	2.78		
1	Clue		6.79		
1	Elbow		7.17		
1	Printer		6.59		
All claims and returned goods MUST be accompanied by this bill.		TAX			
Received By		TOTAL		36.60	