

TEXAS COUNTY

Route 137 over Pine Creek

COMMENT ON THIS PROJECT

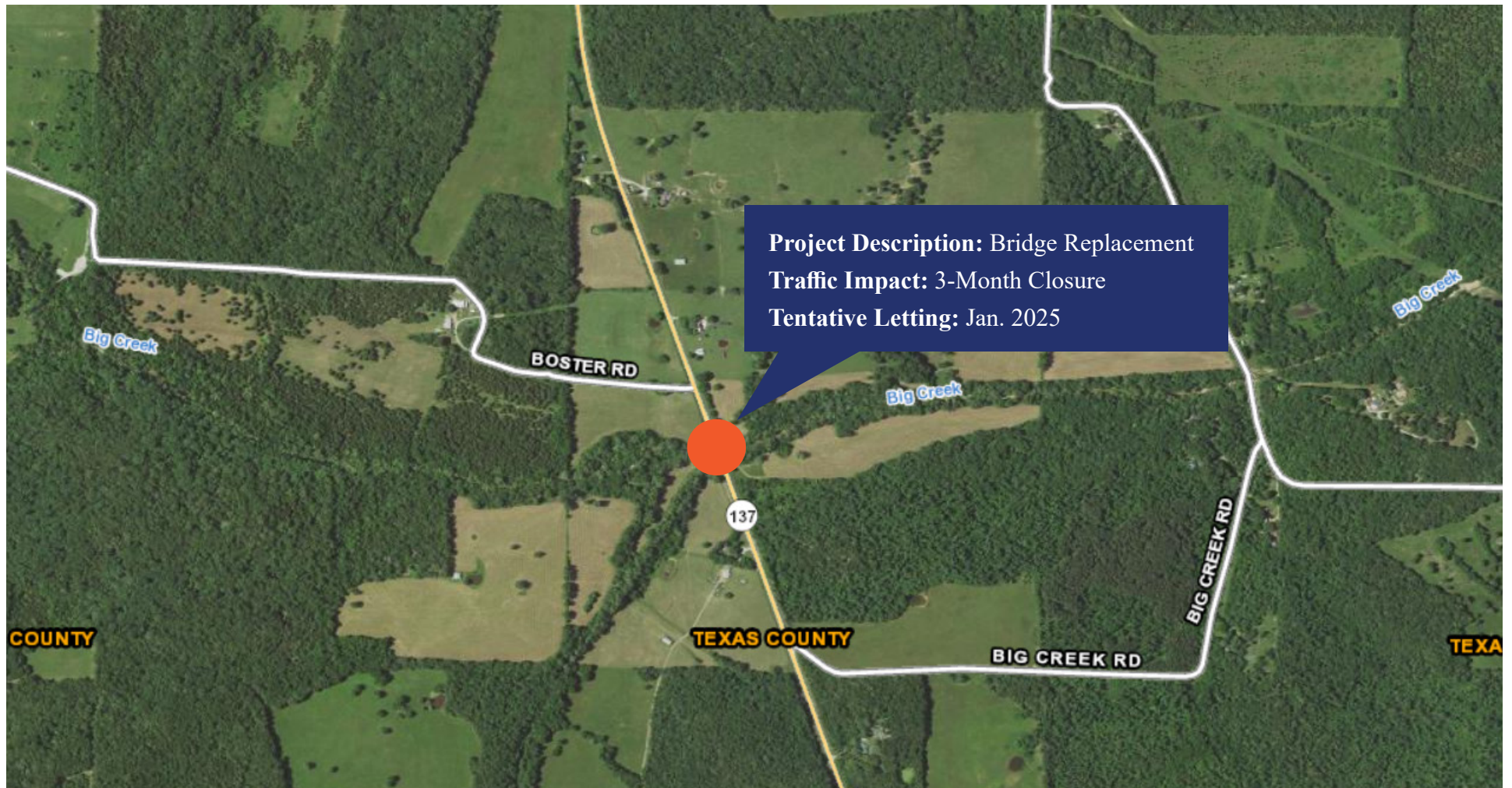


Missouri Department of Transportation | Southeast District | 2675 North Main Street
Sikeston, MO 63801 | 1-888 ASK MODOT (275-6636) | www.modot.org/southeast

TEXAS COUNTY

Route 137 over Big Creek

COMMENT ON THIS PROJECT



Missouri Department of Transportation | Southeast District | 2675 North Main Street
Sikeston, MO 63801 | 1-888 ASK MODOT (275-6636) | www.modot.org/southeast

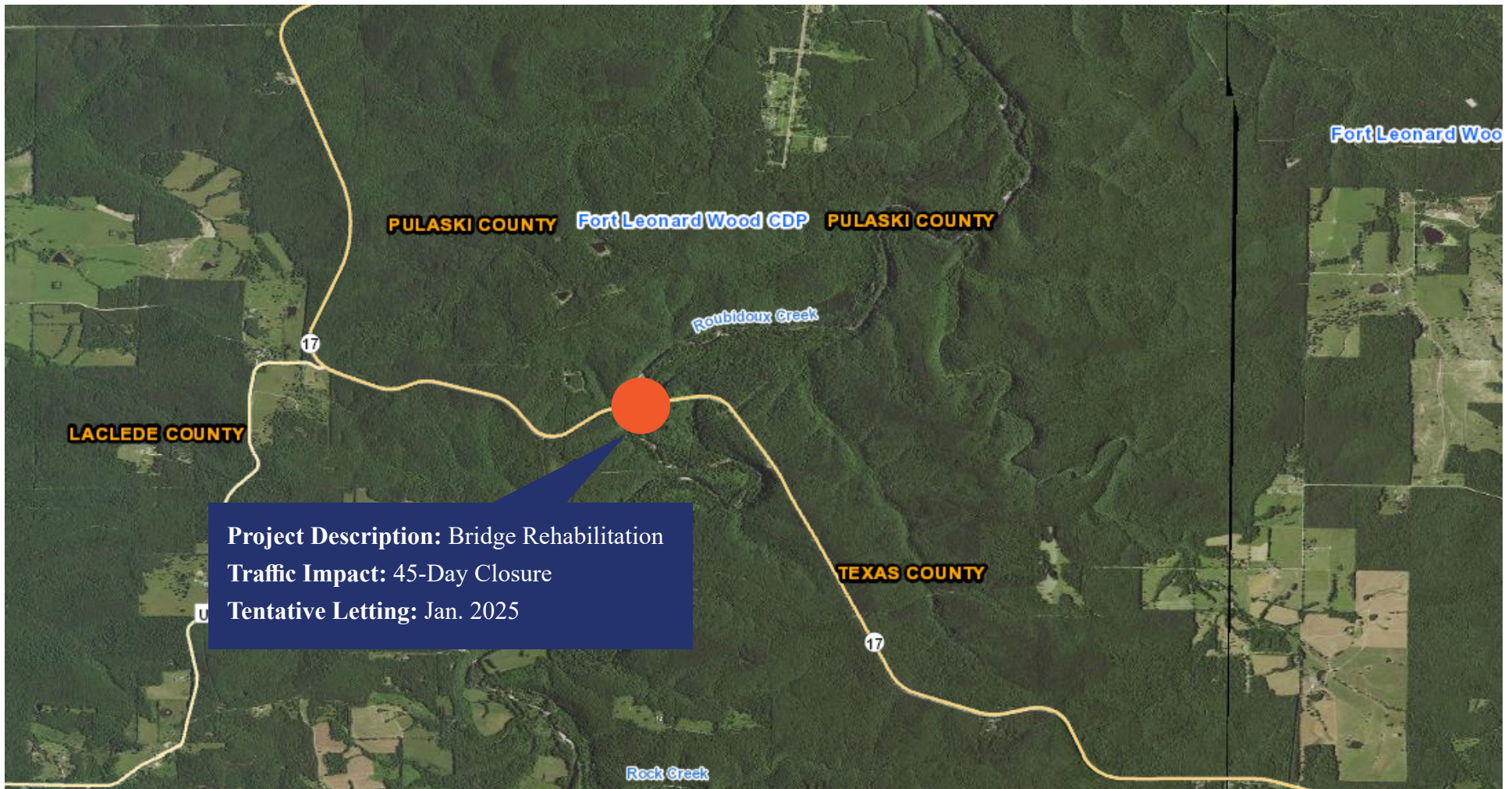
Route 137 over South Prong Jacks Fork

COMMENT ON THIS PROJECT



Route 17 over Roubidoux Creek

COMMENT ON THIS PROJECT



Project Description: Bridge Rehabilitation
Traffic Impact: 45-Day Closure
Tentative Letting: Jan. 2025

