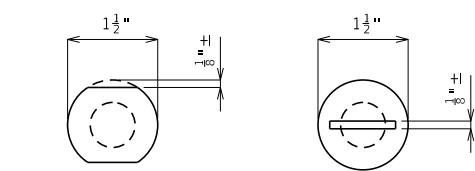
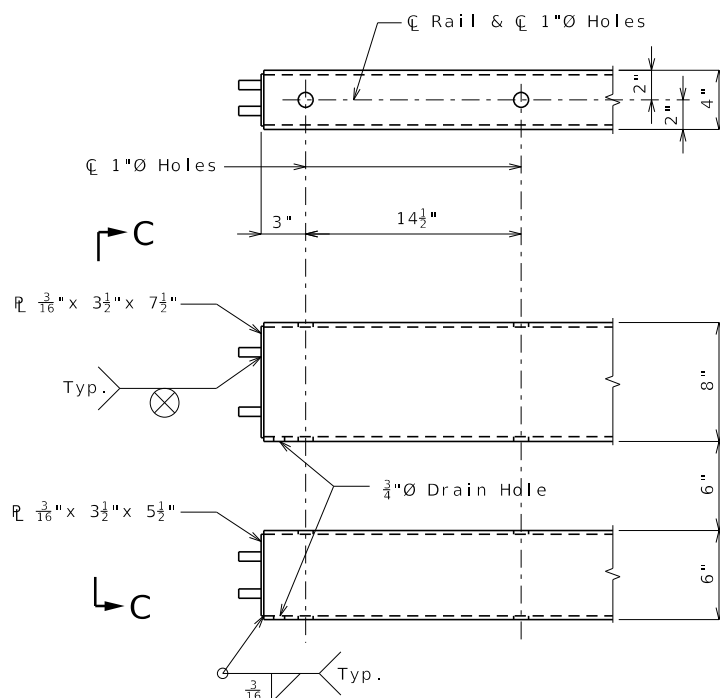


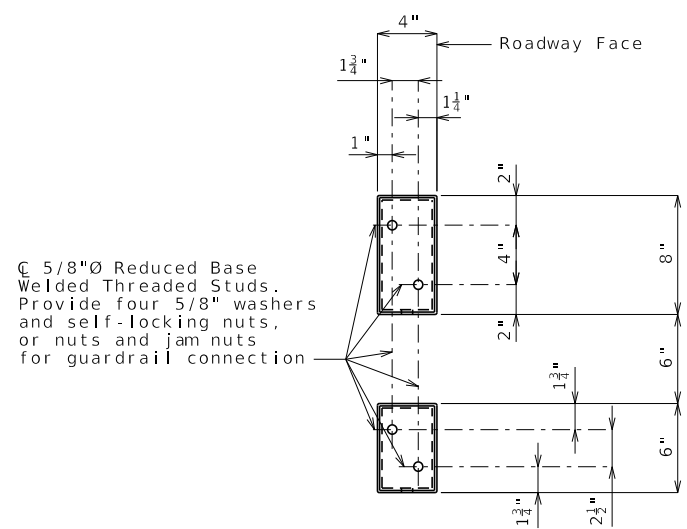
DETAIL OF 3/4"Ø ROUND HEAD BOLT



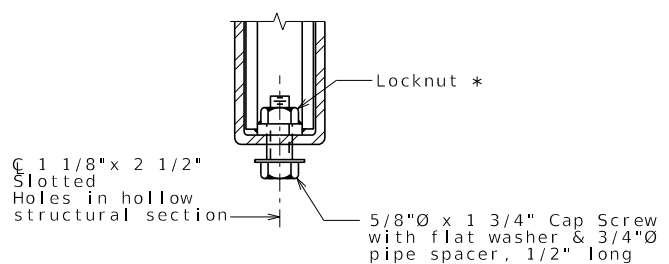
VIEW B-B
Without Slot or Recess
With Slot



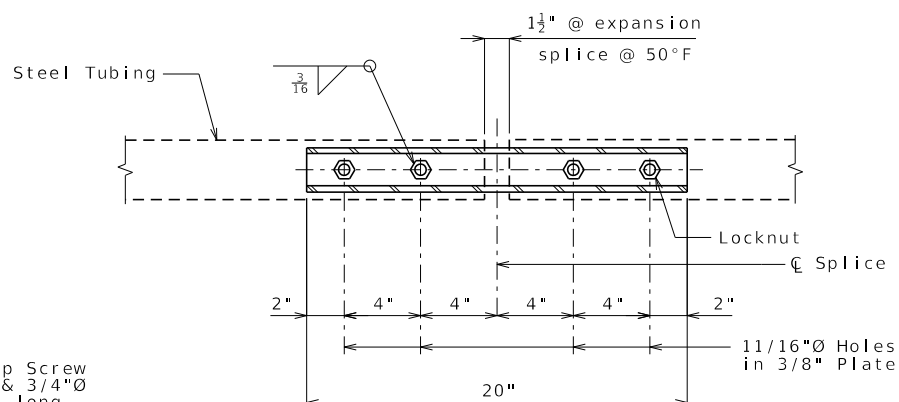
END OF RAIL DETAILS



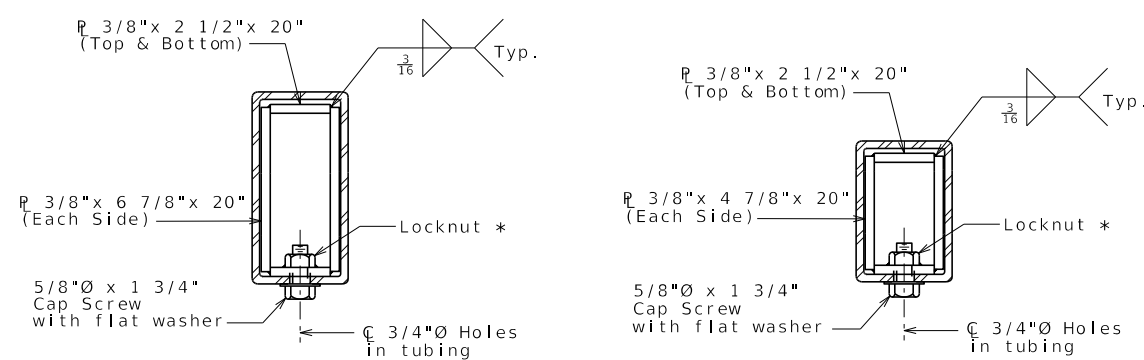
SECTION C-C



RAIL SPLICE CONNECTION AT EXPANSION JOINT



PLAN BOTTOM SPLICE PLATE TYPICAL



TOP RAIL

BOTTOM RAIL

SECTIONS AT RAIL SPLICE

Notes:

Fabrication of structural steel shall be in accordance with Sec 712 and 1080.

Hollow structural sections shall be in accordance with ASTM designation A 500 Grade B Structural Steel Tubing and shall meet the longitudinal CVN requirements of 15 ft-lbs at 0° F, see Sec 1080 for reporting.

All other steel shapes and plates shall be in accordance with AASHTO M 270 Grade 36 except posts shall be in accordance with AASHTO M 270, Grade 50.

All anchor bolts shall be ASTM F1554 Grade 36 with ASTM A563 Grade A hex nuts and ASTM F436 hardened washers.

Bolts, cap screws, and nuts shall be in accordance with ASTM designation A307 except for high strength bolts, nuts and washers noted which shall be in accordance with AASHTO M 164.

All anchor bolts, bolts, nuts, cap screws, washers and lock washers shall be galvanized in accordance with AASHTO M 232 (ASTM A153), Class C.

All posts, railing, rail splices, and angles shall be galvanized after shop fabrication in accordance with AASHTO M 111 and ASTM A385. Galvanized rail shall not be painted.

Railing shall be in accordance with Sec 713, except as noted.

All field drilled holes shall be coated with an approved zinc rich paint before erection.

HSS = Hollow Structural Section

* Tack weld nut to plate.

DATE PREPARED		10/17/2024	
ROUTE	STATE	MO	
DISTRICT	SHEET NO.	000	
COUNTY			
JOB NO.			
CONTRACT ID.			
PROJECT NO.			
BRIDGE NO.			

DATE	DESCRIPTION

MISSOURI HIGHWAYS AND TRANSPORTATION COMMISSION



105 WEST CAPITOL
JEFFERSON CITY, MO 65102
1-888-ASK-MODOT (1-888-275-6636)