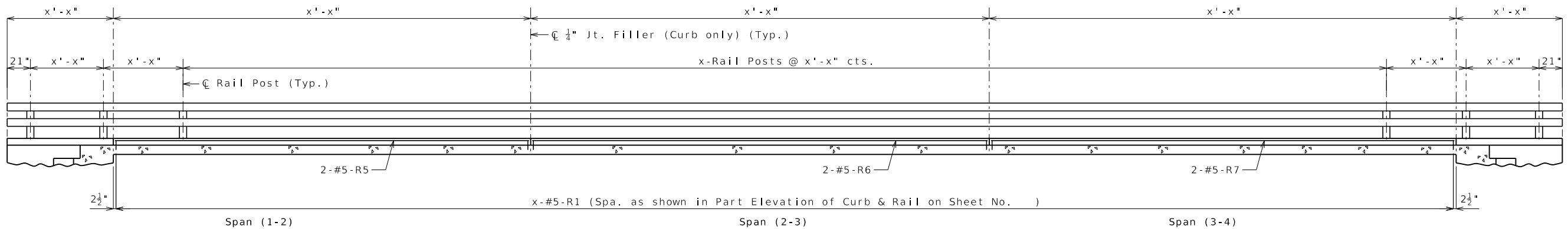


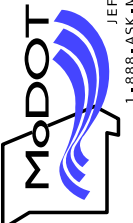
Modify Elevation below as necessary. Elevation shown is scaled down 0.25 from full size.

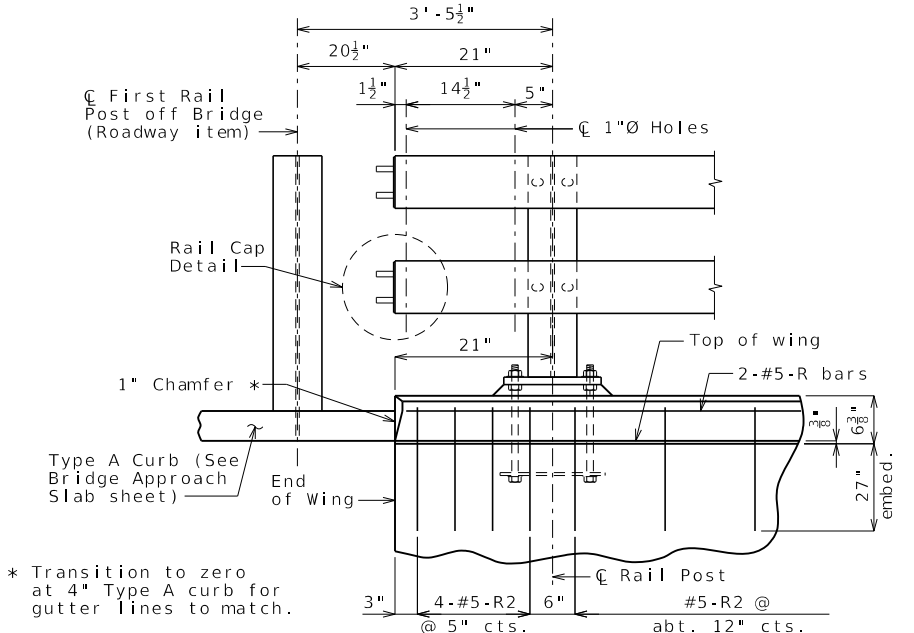


**ELEVATION OF LEFT CURB AND RAIL**  
 (Right curb and rail similar by 180° rotation.)  
 Longitudinal dimensions are horizontal.

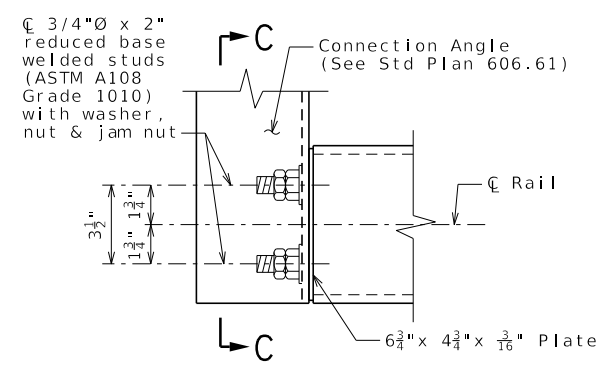
DATE PREPARED <b>1/23/2024</b>	
ROUTE	STATE <b>MO</b>
DISTRICT	SHEET NO. <b>005</b>
COUNTY	
JOB NO.	
CONTRACT ID.	
PROJECT NO.	
BRIDGE NO.	

DESCRIPTION	DATE

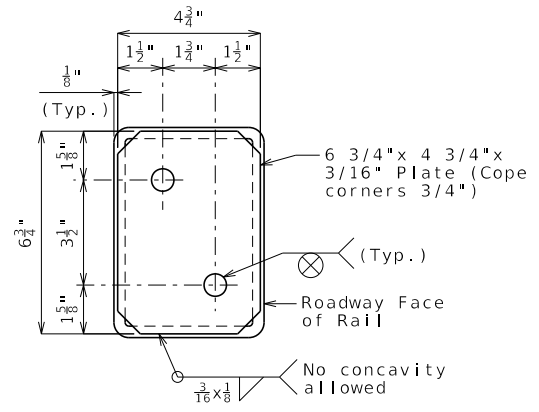
MISSOURI HIGHWAYS AND TRANSPORTATION COMMISSION  
  
 105 WEST CAPITOL  
 JEFFERSON CITY, MO 65102  
 1-888-ASK-MODOT (1-888-275-6636)



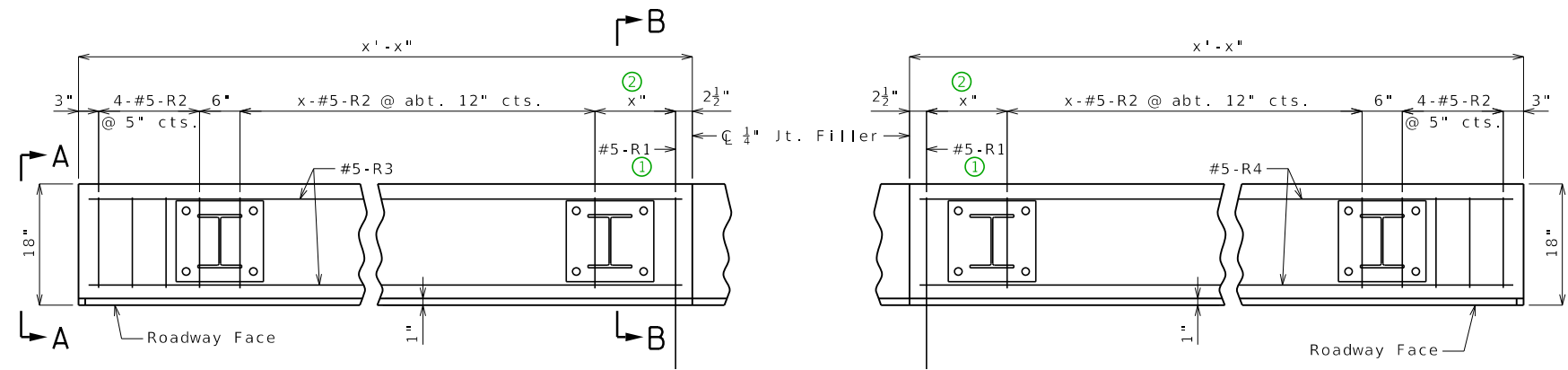
**PART ELEVATION SHOWING END OF RAIL ON WING**  
 Bridge Approach Transition not shown for clarity (Roadway item)



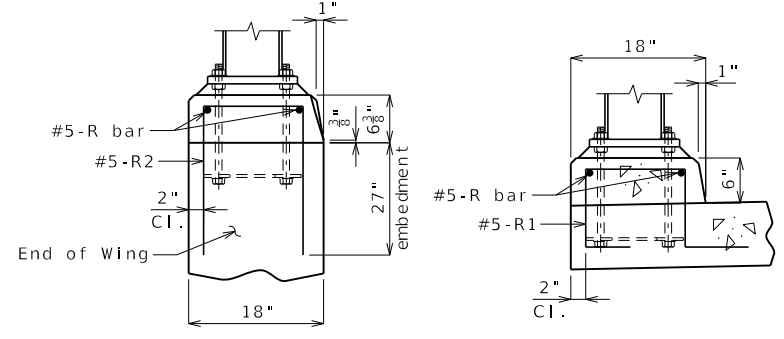
**RAIL CAP DETAIL**



**SECTION C-C (RAIL CAP)**



**PART PLAN OF LEFT CURB AT END BENTS SHOWING REINFORCEMENT**  
 Right curb similar. Rail not shown for clarity.



**ELEVATION A-A**

**SECTION B-B**

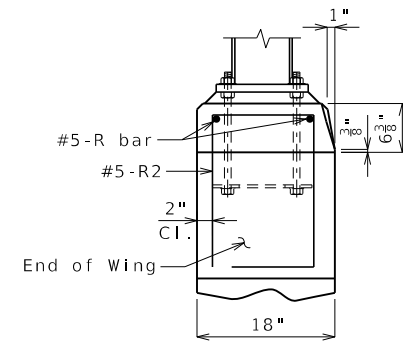
Note: Work this sheet with Sheet No. .

**38-INCH TWO-TUBE RAIL**

## TTR05 Guidance & Alternate Details

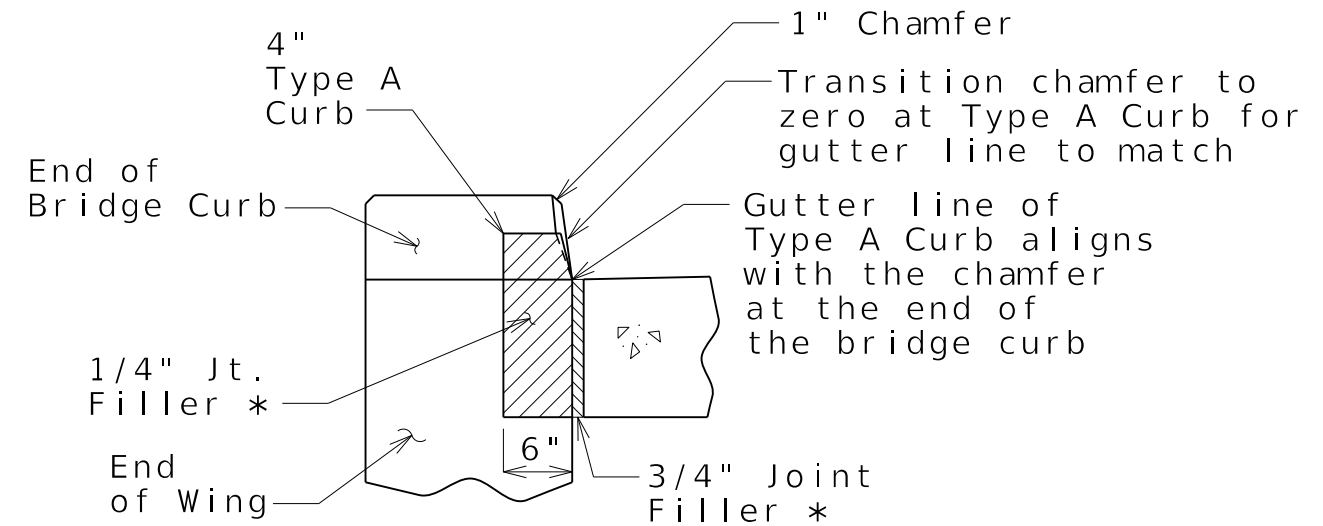
Standard Drawing Guidance (Do not show on plans)

- ① Large skewes may require additional R1 bars.
- ② 6" min., 12" max. to avoid anchor bolts by 1½" min.



ELEVATION A-A

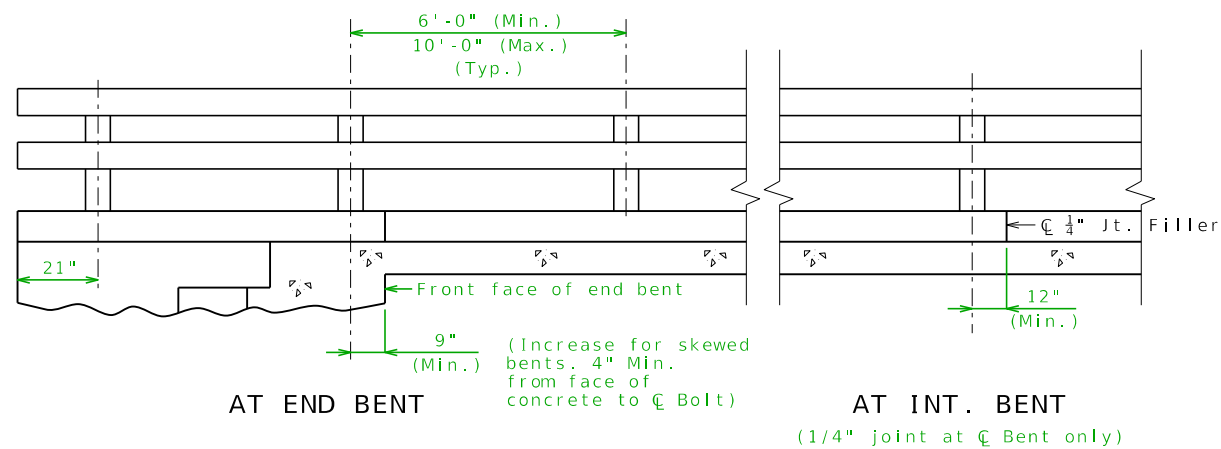
Use for shallow superstructure where 27" embedment is not possible. (Shape 6 with E=12")



SECTION BETWEEN CURBS

Copy and paste this detail to Bridge Approach Slab sheet to replace Section Between Curb and Barrier. This detail is scaled to match the scale of the MAJOR Bridge Approach Slab sheets.

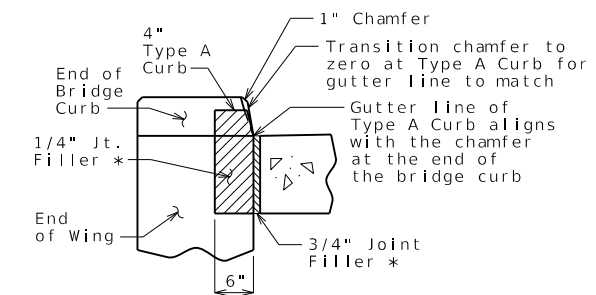
## Post spacing guidance:



AT END BENT

AT INT. BENT

(1/4" joint at C Bolt only)



SECTION BETWEEN CURBS

Copy and paste this detail to Bridge Approach Slab sheet to replace Section Between Curb and Barrier. This detail is scaled to match the scale of the MINOR Bridge Approach Slab sheet.