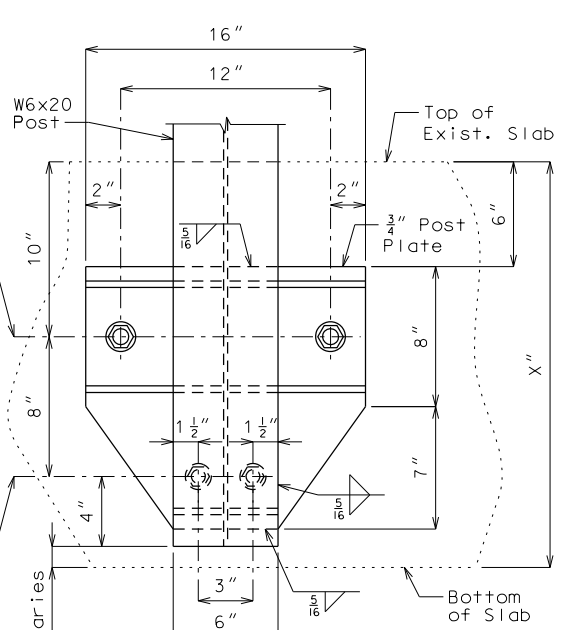
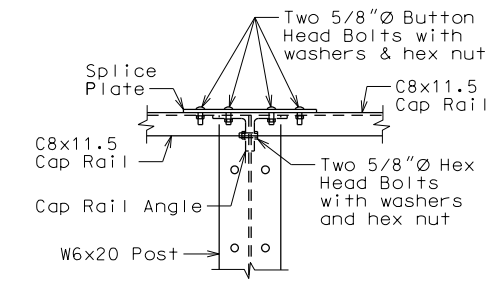


Resin Anchor Systems:  
 - 1 1/8"  $\emptyset$  (Min.)  
 Drilled Hole in slab  
 or as recommended by  
 manufacturer  
 - 1"  $\emptyset$  ASTM A449 Type 1  
 Threaded Rod snug  
 tight & embedded 12  
 inches in slab  
 - 2 1/2"  $\emptyset$  Hardened  
 Locking Washer and  
 Hex Nut

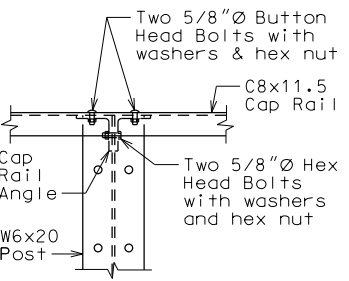
Resin Anchor Systems:  
 - 7/8"  $\emptyset$  (Min.) Drilled  
 Hole in slab or as  
 recommended by  
 manufacturer  
 - 3/4"  $\emptyset$  ASTM A449 Type  
 1 Threaded Rod snug  
 tight & embedded 8  
 inches in slab  
 - Hardened Locking  
 Washer and Hex Nut



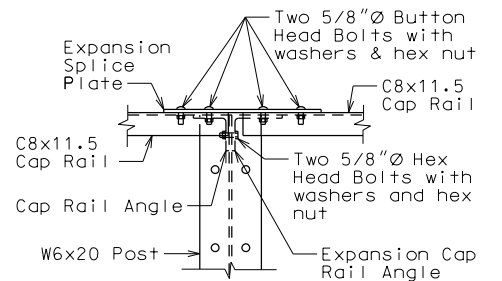
**ELEVATION C-C**



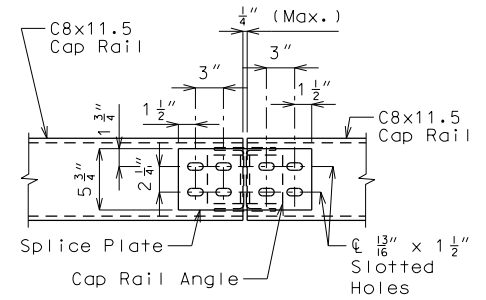
**ELEVATION OF TYPICAL SPLICE**



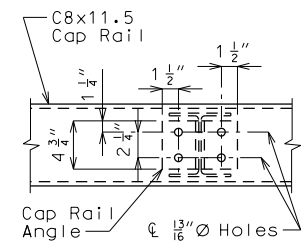
**ELEVATION OF RAIL POST CONNECTION**



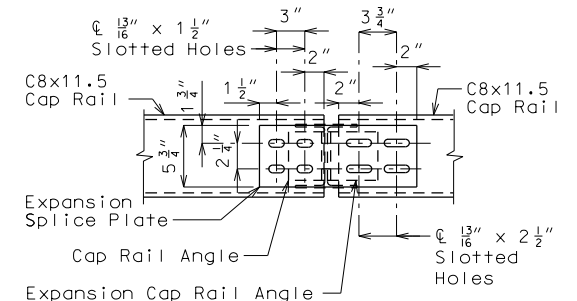
**ELEVATION OF EXPANSION SPLICE**



**PLAN OF TYPICAL SPLICE**

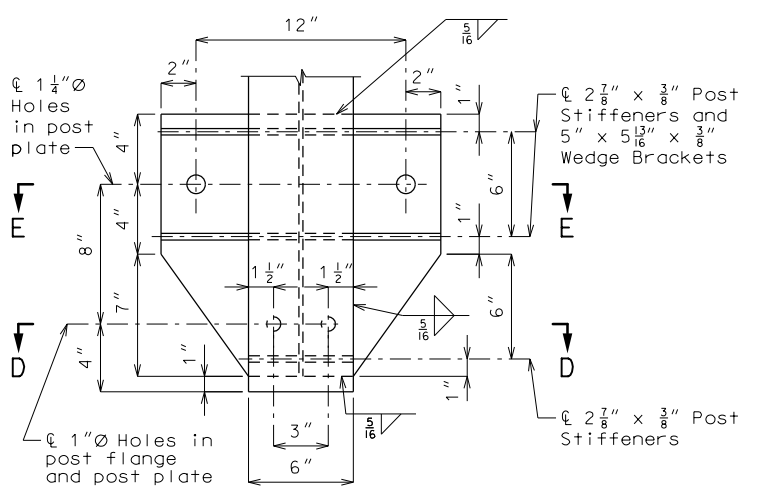


**PLAN OF RAIL POST CONNECTION**

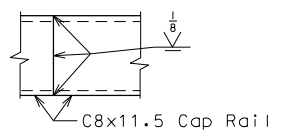


**PLAN OF EXPANSION SPLICE**

Expansion slots shall be on the same side of post as the expansion joint.

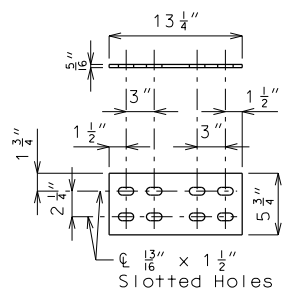


**DETAILS OF POST PLATE**

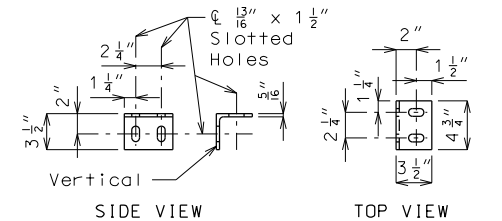


**OPTIONAL SPLICE**

One shop or field splice per panel may be provided at any location.

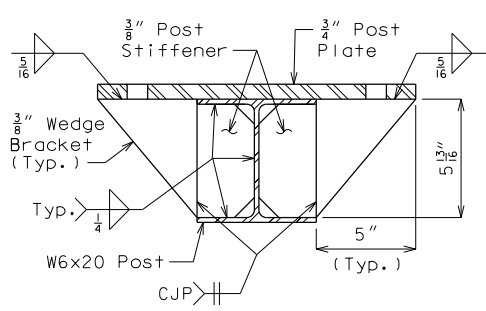


**SPLICE PLATE**

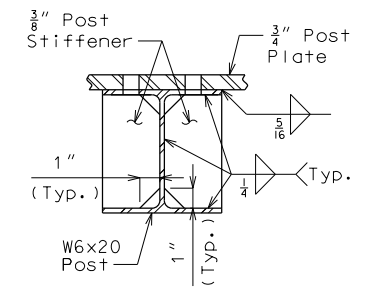


**CAP RAIL ANGLE**

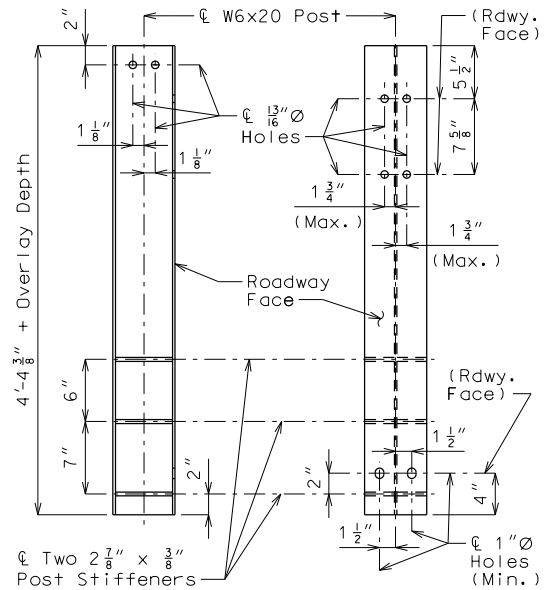
$L3 \frac{1}{2} \times 3 \frac{1}{2} \times \frac{5}{16}$



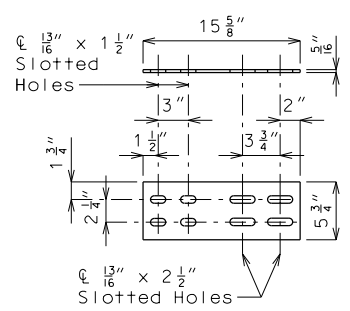
**SECTION E-E**



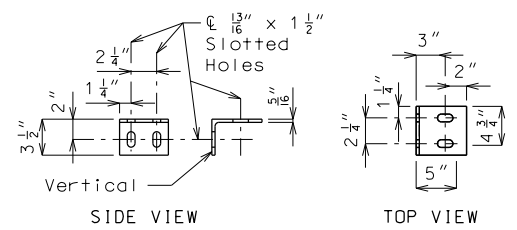
**SECTION D-D**



**DETAILS OF POST**



**EXPANSION SPLICE PLATE**



**EXPANSION CAP RAIL ANGLE**

$L5 \times 3 \frac{1}{2} \times \frac{5}{16}$


"THIS MEDIA SHOULD NOT BE CONSIDERED A CERTIFIED DOCUMENT."

DATE PREPARED  
 7/27/2020  
 ROUTE STATE  
 \* MO  
 DISTRICT SHEET NO.  
 BR \*

COUNTY \*  
 JOB NO. \*  
 CONTRACT ID.

PROJECT NO.  
 BRIDGE NO.  
 THRIE 2B

DESCRIPTION	DATE

MISSOURI HIGHWAYS AND TRANSPORTATION  
 COMMISSION  
  
 105 WEST CAPITOL  
 JEFFERSON CITY, MO 65102  
 1-888-ASK-MODOT (1-888-275-6636)

Detailed Checked

Note: This drawing is not to scale. Follow dimensions. Sheet No. of