



St. Louis Missouri Regional Management Team

The Missouri Department of Transportation is committed to providing the public with a safe and modern transportation system. MoDOT designs, builds and maintains roads and bridges, and works to improve airports, river ports, railroads, public transit systems and pedestrian and bicycle travel. The agency also administers motor carrier and highway safety programs.

St. Louis is one of seven regions that is responsible for administering all department activities for this area. As we focus on our efforts to make the most of every dollar, the St. Louis Missouri region includes four counties with the district management team shown.



Tom Blair, P.E.
District Engineer
(314) 453-1800
thomas.blair@modot.mo.gov
Tom was named district engineer in October 2017. He frequently leads partnerships and collaborations among private and public entities to improve transportation in the region. Previously, Tom served as assistant district engineer over maintenance and traffic operations.



Mark Croarkin, P.E.
Assistant District Engineer
(314) 453-1803
mark.croarkin@modot.mo.gov
Mark is responsible for the St. Louis district's maintenance and traffic operations, including the Transportation Management Center (TMC).



Tom Evers, P.E.
Assistant District Engineer
(314) 453-1802
thomas.evers@modot.mo.gov
Tom is responsible for planning, project delivery, overseeing the design, construction and right of way program. Previously, he served as the district design engineer and area engineer for St. Charles County.



Linda Wilson-Horn
Assistant to the District Engineer
(314) 453-1804
linda.horn@modot.mo.gov
Linda works with the district engineer in all facets of management of district administration, including human resources, information systems, risk management, safety and health, support services, fleet, facilities, budget and the business plan.



Marie Elliott, M.A.
Communications Manager
(314) 453-1807
marie.elliott@modot.mo.gov
Marie coordinates the St. Louis district's communication, media relations, government relations and customer outreach programs.



Wesley Stephen, AICP
District Planning Manager
(314) 275-1543
wesley.stephen@modot.mo.gov
Wesley is in charge of the district's five year construction and right of way program by identifying and prioritizing projects, balancing the construction budget, short and long term planning and developing public and private partnerships.



Joe Molinaro
District Bridge Engineer
(314) 453-1760
joseph.molinaro@modot.mo.gov
Joe manages maintenance of state bridges and oversees all bridge safety inspections, and helps identify repairs and recommended maintenance, rehabilitation or replacement.



Javal L. Burton
Human Resources Manager
(314) 453-1705
javal.burton@modot.mo.gov
Javal oversees all aspects of human resources administration at the district.



Cherie Beck
District Information Systems Manager
(314) 453-5001
cherie.beck@modot.mo.gov
Cherie manages the St. Louis District's automation resources. She ensures coordination, consistency and compliance for internal and external automation technology customers.



Jonathan Barnes
Right of Way Manager
(314) 453-1826
jonathan.barnes@modot.mo.gov
Jonathan manages district right-of-way activities including appraisals, negotiations and relocation. He oversees the purchase of property for new projects, the disposal of excess land, and property management.



Bob Becker
District Maintenance Engineer
(314) 453-1758
robert.becker@modot.mo.gov
Bob is responsible for coordination of all roadway maintenance operations in the district, including budget, personnel and equipment distribution.



Jeff Bohler, P.E.
District Design Engineer
(314) 453-5095
jeffrey.bohler@modot.mo.gov
Jeff manages the district's design, utilities and surveying resources and ensures the production of quality highway designs on time and within budget.



Mike Castro, P.E.
Construction and Materials Engineer
(314) 453-1850
michael.castro@modot.mo.gov
Mike manages the oversight, technical expertise and quality assurance for district construction projects, materials inspections and geotechnical operations.



Brian Umfleet, P.E.
District Traffic Engineer
(314) 275-1540
brian.umfleet@modot.mo.gov
Brian plans and coordinates all traffic engineering issues for the St. Louis district, including traffic control devices, signing, marking, signals, permits and lighting.



Jeannie Wilson
General Services Manager
(314) 301-1422
jeannie.wilson@modot.mo.gov
Jeannie is in charge of equipment management, procurement, product distribution and facilities management.



Kristina Coppinger
Safety and Health Manager
(314) 453-5012
kristina.coppinger@modot.mo.gov
Kristi coordinates the district's health, environmental, safety and risk management programs. She is also the district's primary incident response contact for law enforcement.



Monica Bax
Support Services Manager
(314) 453-1712
monica.bax@modot.mo.gov
Monica manages the district's financial services operations, which includes accounts payable, payroll and benefits.

Area Engineers

To ensure MoDOT's mission of exceptional customer service, these engineers have been designated to be MoDOT's local connection within the communities they serve.

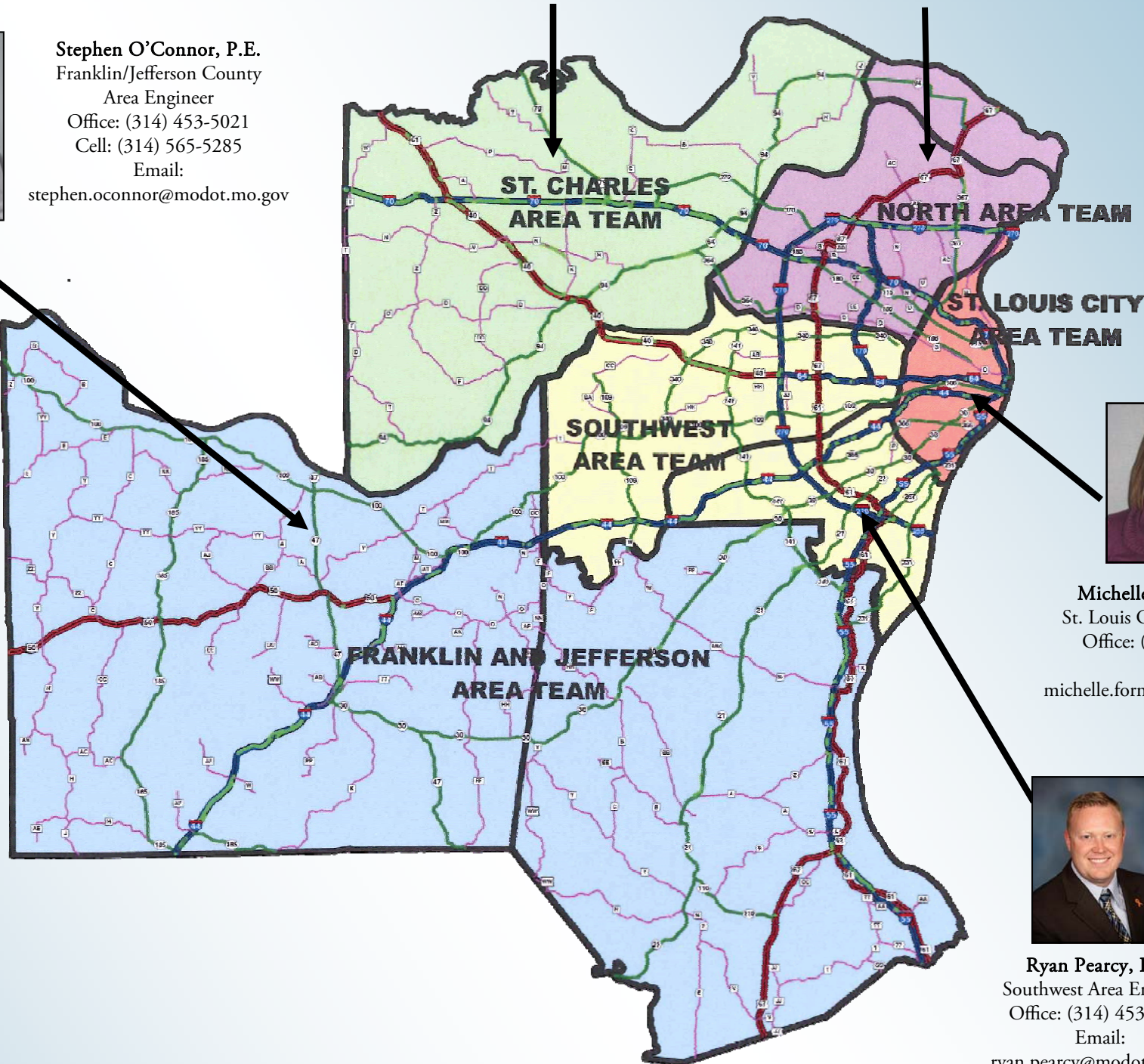
Andy Tuerck, P.E.
St. Charles Area Engineer
Office: (314) 453-5046
Cell: (636) 734-3903
Email:
andrew.tuerck@modot.mo.gov



Betherny Williams
North Area Engineer
Office: (314) 453-1749
Cell: (314) 220-2896
Email:
betherny.williams@modot.mo.gov



Stephen O'Connor, P.E.
Franklin/Jefferson County
Area Engineer
Office: (314) 453-5021
Cell: (314) 565-5285
Email:
stephen.oconnor@modot.mo.gov



Michelle Forneris, P.E.
St. Louis City Area Engineer
Office: (314) 453-1799
Email:
michelle.forneris@modot.mo.gov



Ryan Percy, P.E.
Southwest Area Engineer
Office: (314) 453-5086
Email:
ryan.percy@modot.mo.gov



About the St. Louis District:

- Counties: 4
- Population: 1,855,000
- Square Miles: 2,702
- Miles to Maintain: 1,533 centerline miles of state highway



MoDOT St. Louis District (twitter.com/MoDOT_StLouis)



MoDOT St. Louis District
(www.facebook.com/modot-st-louis)



www.youtube.com/user/modotstl



www.modot.org/stlouis (314) 275-1500
1-888-ASK-MODOT (888-275-6636)



MoDOT St. Louis District (twitter.com/StLouisTraffic)



Visit Our Traveler Information Map

MoDOT's Traveler Information Map provides a view of road conditions for major Missouri highways. The map shows work zone locations, flooding information, weather-related road conditions and incidents that affect travel.

Commercial drivers can view information on oversized/over-dimension loads, vertical clearance and commercial zones.

A weather radar image and links to road condition maps for surrounding states are also available on the Traveler Information Map at www.modot.org.

Our mission is to provide a world-class transportation experience that delights our customers and promotes a prosperous Missouri.