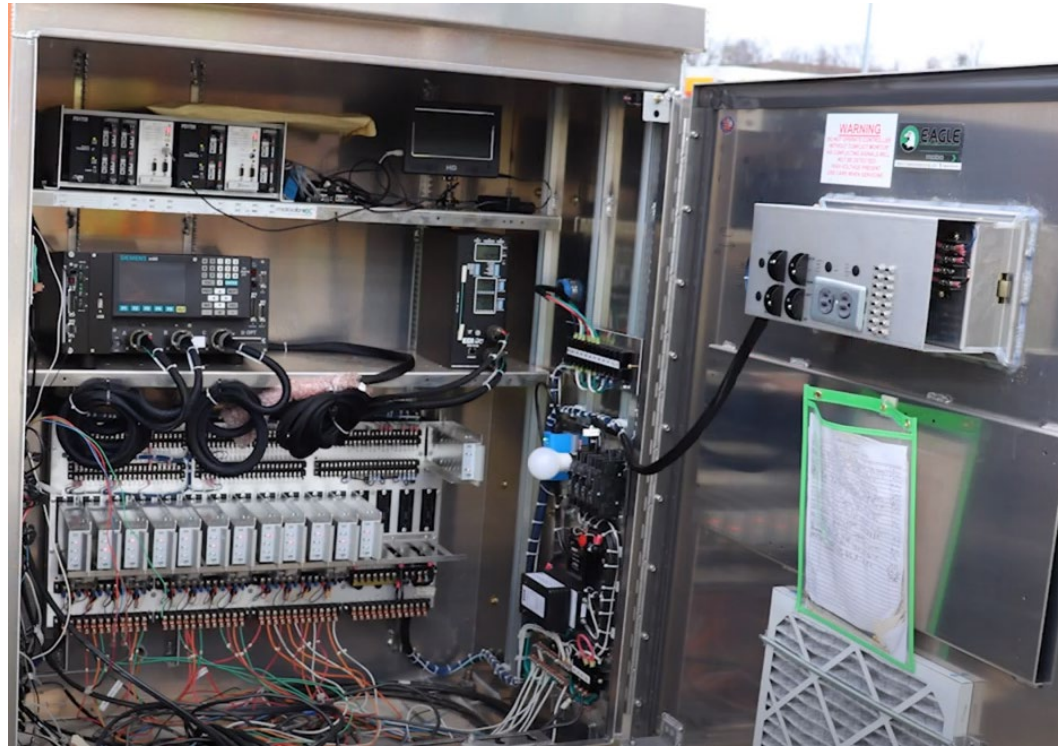


Productivity

April 2022

Prepared by Transportation Planning
Missouri Department of Transportation

Signal Backup Flasher



Description and Benefit

Box that provides 120V power source to the signal, so a flashing output is maintained while changing out a signal cabinet. Prevents the signal from going dark during cabinet replacements.

This innovation saves time, simplifies work and improves safety by not requiring temporary stop signs to be set out at all approaches to the signal. Improves safety to the traveling public since the signal doesn't go dark and there is a flashing light that is substantially more visible than a ground mounted temporary sign. Also safer since there are not temporary signs in or right next to the travel way that could be hit.

For More Information Contact

Northeast District/Maintenance
Gary Winkler at gary.winkler@modot.mo.gov or 660-385-8282.