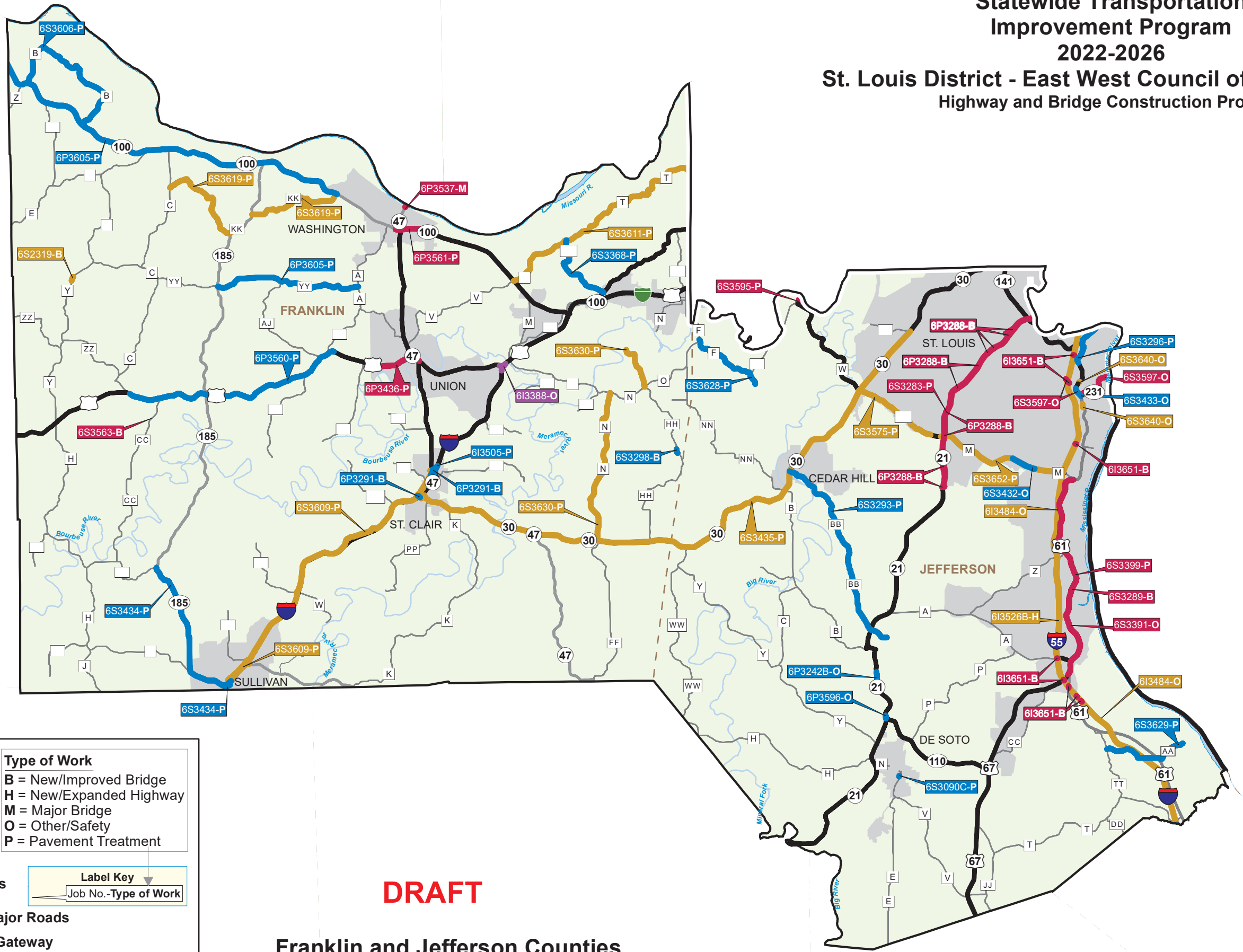


Statewide Transportation
Improvement Program
2022-2026
St. Louis District - East West Council of Governments
Highway and Bridge Construction Projects



State Fiscal Year*

- 2022
- 2023
- 2024
- 2025
- 2026

Type of Work

- B = New/Improved Bridge
- H = New/Expanded Highway
- M = Major Bridge
- O = Other/Safety
- P = Pavement Treatment

Urban Areas

Missouri Major Roads

East-West Gateway Council of Governments

Label Key

Job No.-Type of Work

* July 1 - June 30
Note: Some projects overlap. The state fiscal year displayed in these instances will follow the order shown in the legend. Label tag color corresponds to respective state fiscal year.

DRAFT

Franklin and Jefferson Counties



Missouri Department of Transportation
1-888-ASK-MODOT
WWW.MODOT.ORG
May 5, 2021

