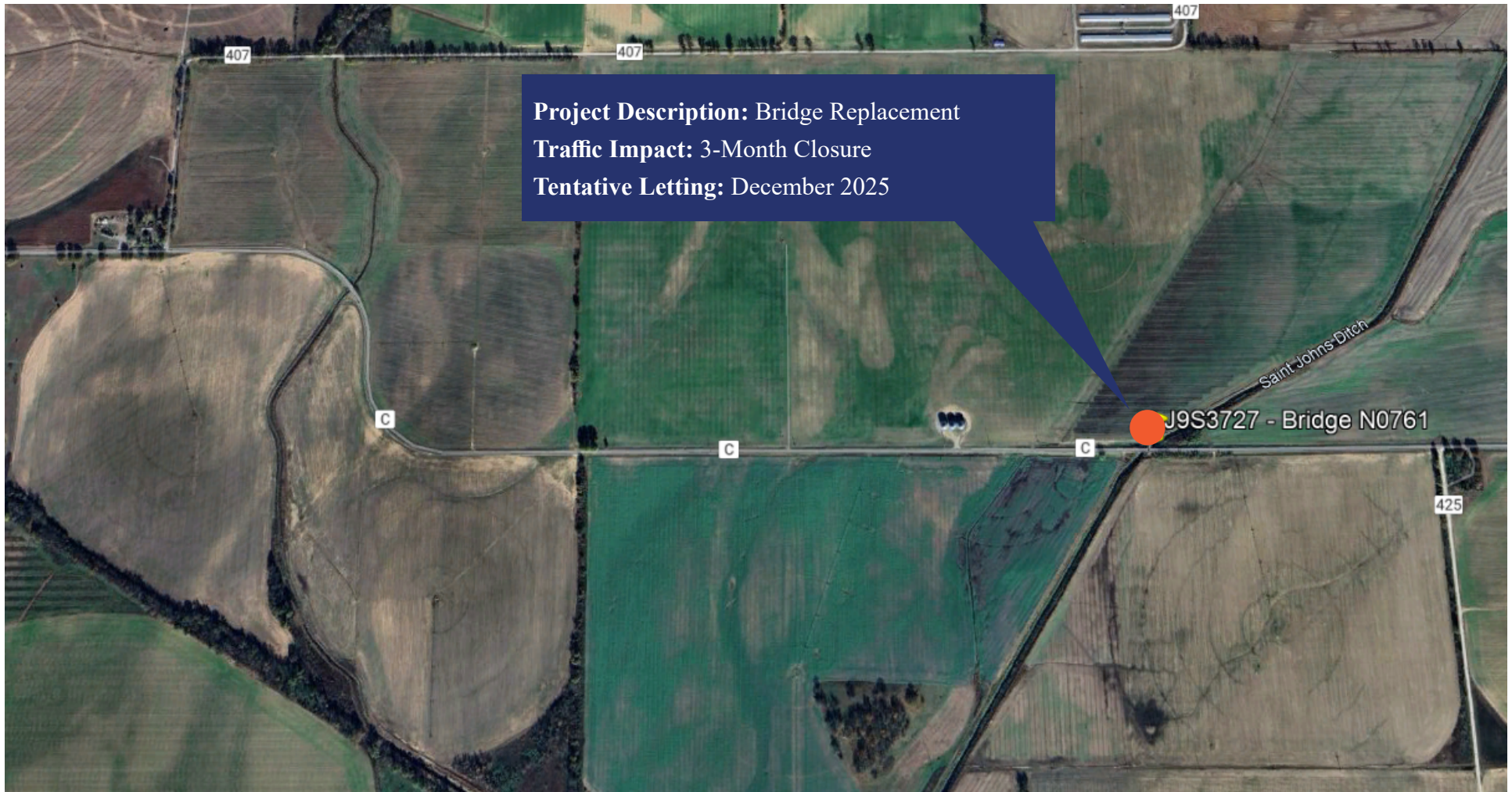


SCOTT COUNTY

# Route C over St. John's Drainage Ditch



Missouri Department of Transportation | Southeast District | 2675 North Main Street  
Sikeston, MO 63801 | 1-888 ASK MODOT (275-6636) | [www.modot.org/southeast](http://www.modot.org/southeast)

## CAPE GIRARDEAU COUNTY

# Route BB over Caney Creek



Missouri Department of Transportation | Southeast District | 2675 North Main Street  
Sikeston, MO 63801 | 1-888 ASK MODOT (275-6636) | [www.modot.org/southeast](http://www.modot.org/southeast)