

Welcome!

Route AC

(New Halls Ferry Road)

Improvements

Open House



SAFETY
IMPROVEMENTS PROJECT
A LIFESAVING PARTNERSHIP



SAINT LOUIS COUNTY
Transportation and Public Works

Crash Data

From Shackelford Rd. to Dunn Rd.
(2016-2020)

1800 crashes

*5x statewide average
for similar roads*

22 crashes

involving pedestrians

3 crashes

involving bicyclists

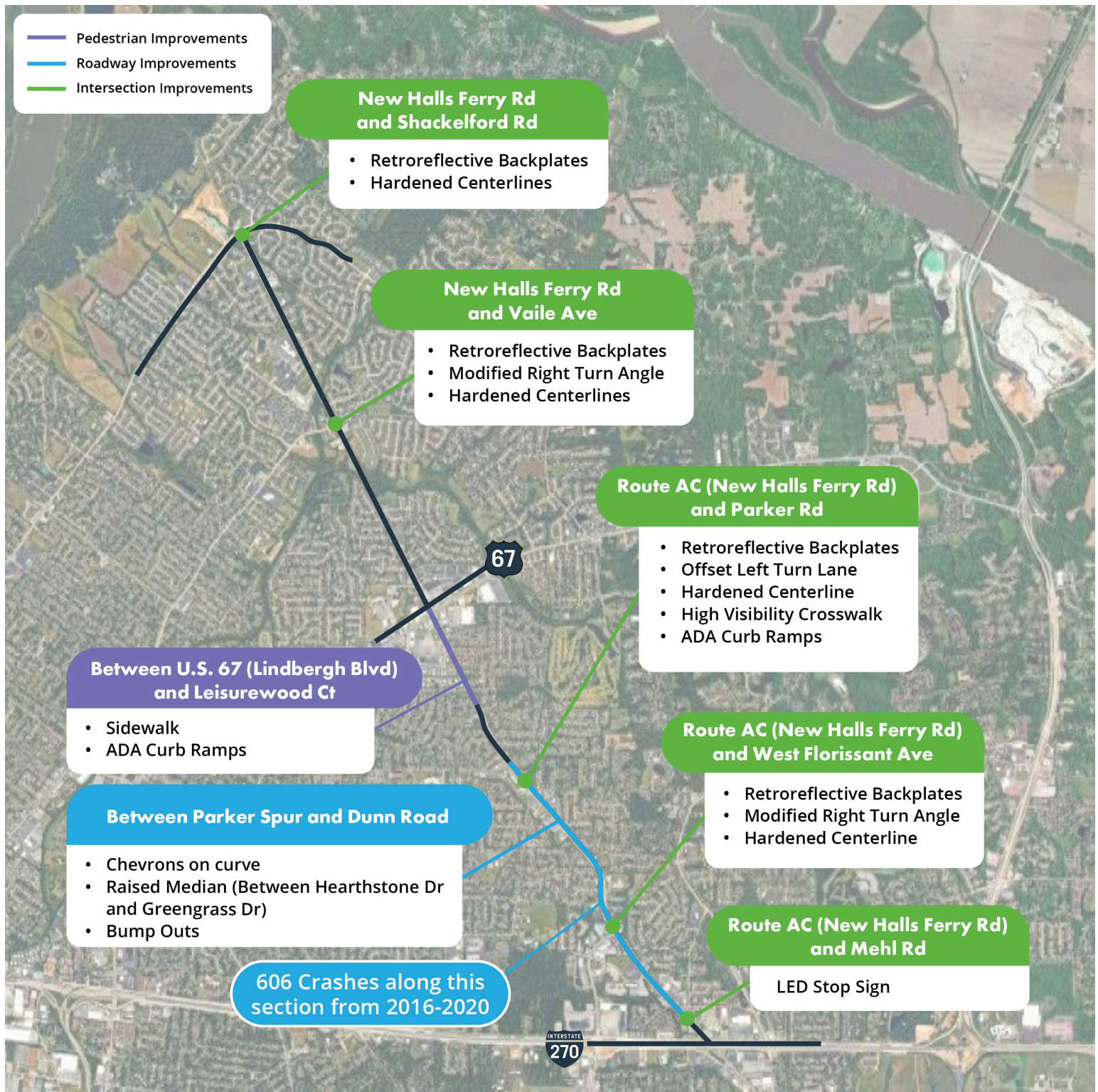


**20 crashes resulting in
serious or fatal injuries**



SAINT LOUIS COUNTY
Transportation and Public Works

New Halls Ferry Improvements

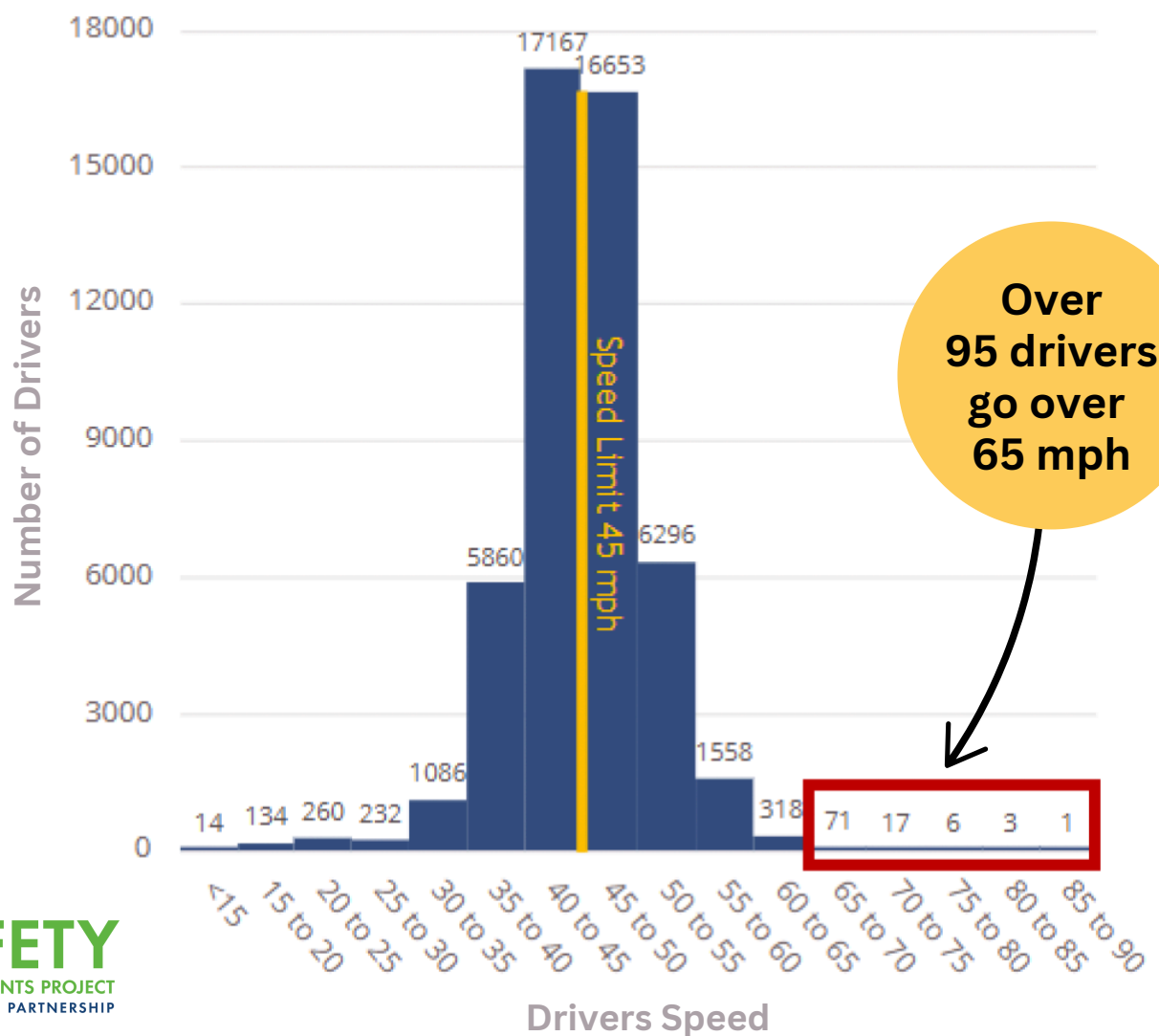


SAINT LOUIS COUNTY
Transportation and Public Works

New Halls Ferry Speed Study

Based on speed data collected by MoDOT for 5 days in 2024

- Posted Speed Limit: 45 mph
- Highest recorded speed: 89 mph
- 50% drive over the speed limit
- 17% travel 50 mph or more

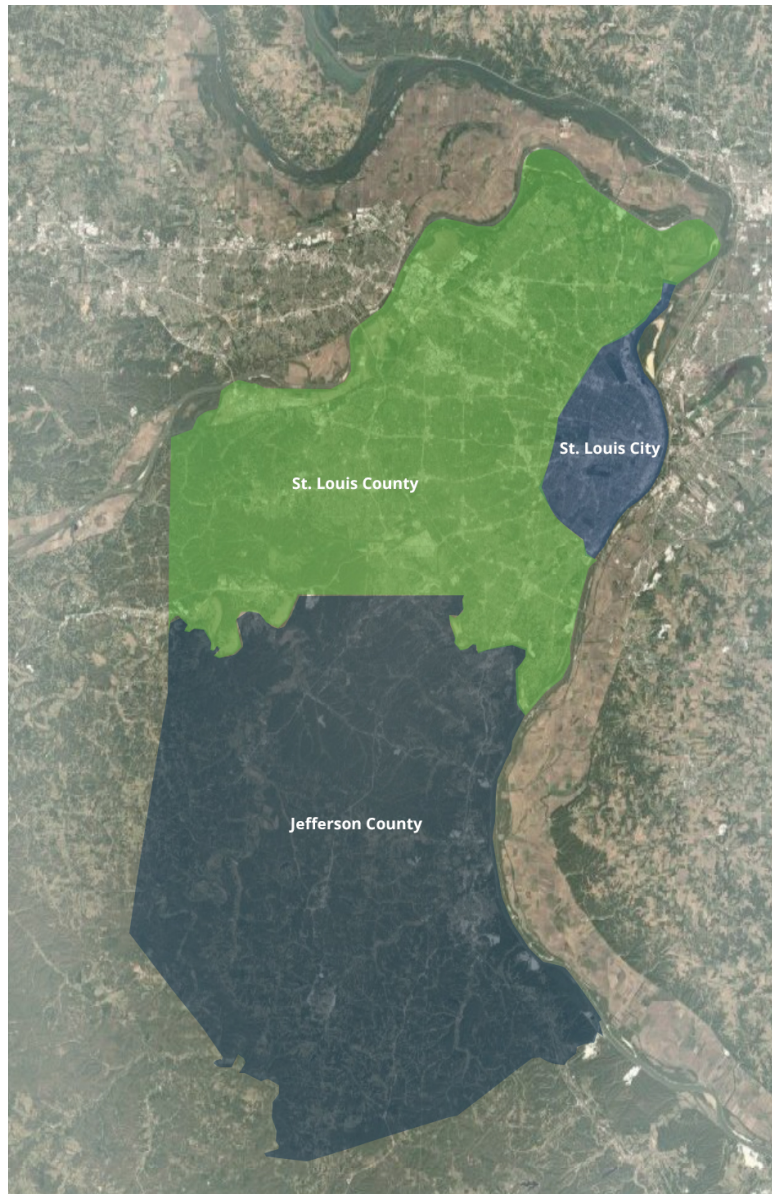


SAINT LOUIS COUNTY
Transportation and Public Works

Overall Project Info

**5,321 serious or
fatal crashes**

- This project includes over 230 locations in Jefferson County, St. Louis City, and St. Louis County
- 32 unique types of safety improvements
- 430+ installations



Project Budget & Results

\$52 Million

MoDOT	\$48 million
St. Louis County	\$4 million

** St. Louis County project includes work on St. Louis County Roads only. This budget consists of \$2 million in Federal Safety Funds and \$2 million in St. Louis County funds.*

170

Serious and Fatal Injury Crashes Reduced
(Estimated) over ten-year period

\$1.2 Billion

In estimated societal savings due to crash reduction



Source: The Highway Safety Manual



Project Goals

1. Reduce **fatal and serious injury** crashes within the budget of \$52 million.
2. Maximize safety improvements for **pedestrians and roadway users** distributed equitably across the project area.
3. Provide improvements with **reasonable maintenance** and service life.
4. Construct improvements with an emphasis on **safety for workers and the traveling public.**
5. Deliver the project by **June 30, 2026**, using a diverse workforce.



Safety Improvements in North County	Description	Visual
Retroreflective Backplates	Increase visibility of signals by adding retroreflective yellow border	
Chevrons and Curve Warning Signs	These signs increase visibility of roadway curves to help drivers navigate the curve safely	
Stop Sign with Flashing LEDs	Increase visibility of stop sign by incorporating LED lights	
Modified Right Turns	<p>Reduces angle driver must look over their shoulder to see oncoming traffic</p> <p>Encourages slower, more attentive driving in right turn lane helping both vehicles and pedestrians</p>	
Offset Left-Turns	By shifting left-turn lanes, drivers have a clearer line of sight to choose when to turn left	

Hardened Centerline Locations

Hardened Centerline: Decreasing left-turn conflicts by extending a low median island with rumble strips into the intersection



See strip maps located on tables for proposed locations of this safety improvement.



SAINT LOUIS COUNTY
Transportation and Public Works

Curb Bump Outs Islands & Raised Median Locations

Curb Bump Out Islands: Islands along the shoulder to provide a visual prompt of a narrower roadway.

Raised Median: New median gives visual prompt of narrower roadway.



See strip maps located on tables for proposed locations of this safety improvement.



SAINT LOUIS COUNTY
Transportation and Public Works

Next Steps

Thank you for joining us today at this open house! Before you go:

Complete a comment form!

Paper forms are available in the
Comment Area or scan the QR code to
complete it online.

We appreciate your feedback!



Stay updated! Sign up for updates on the website:

www.MoDOT.org/SLSafetyProject

