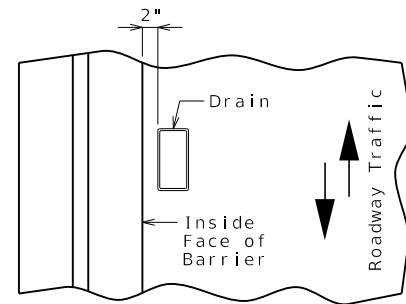




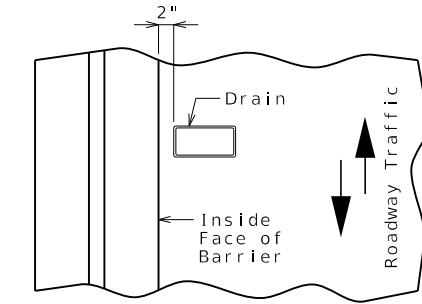
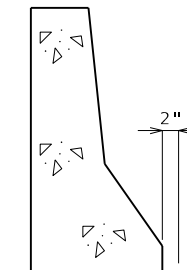
Standard Drawing Guidance (do not show on plans):

- ① Replace example Plan of Slab Showing Slab Drain Locations with actual plan. Verify slab drain does not block vent pipe in box beam.
- ② Details shown inside the sheet border are for drains transverse to roadway requiring a cantilever 3'-9 3/8" or more. Use the below details for drains parallel to roadway requiring a cantilever 3'-3 5/8" or more.
- ③ Use half of the beam depth.
- ④ Beam manufacturer determines required distance between inserts with coordination between contractor and drain supplier.

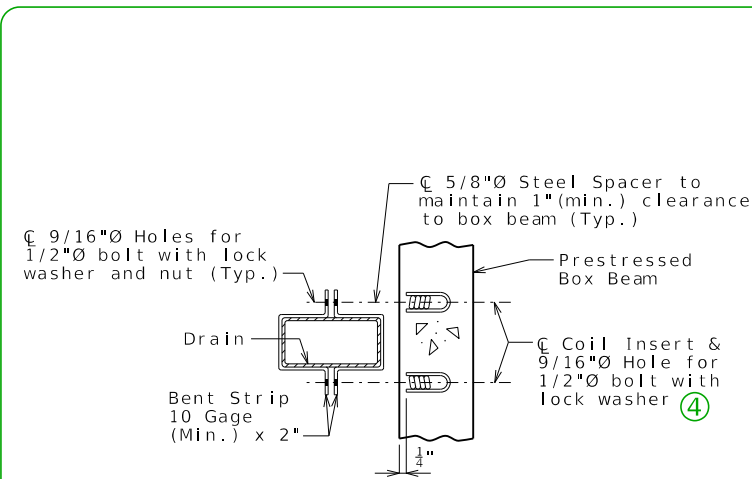
Alternate details for Type B barrier (SBC):



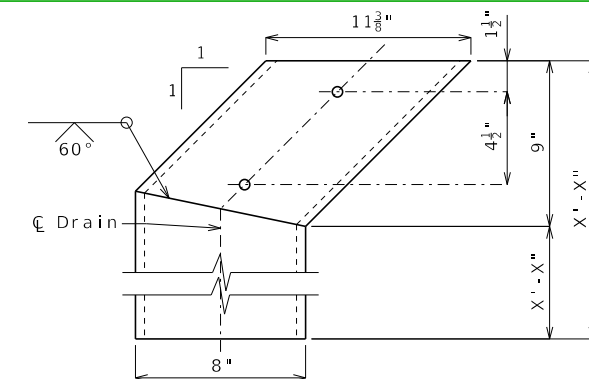
PART PLAN OF SLAB AT DRAIN



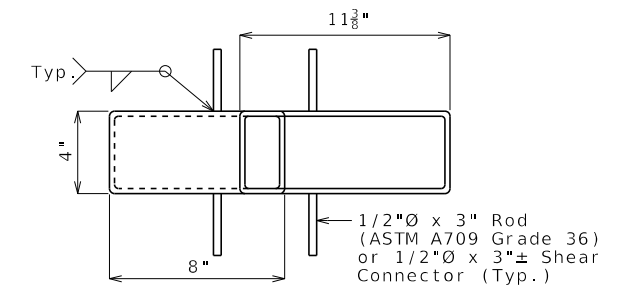
PART PLAN OF SLAB AT DRAIN



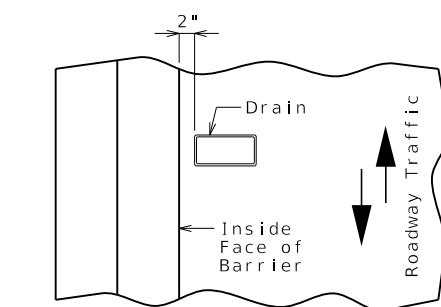
PART SECTION SHOWING BRACKET ASSEMBLY



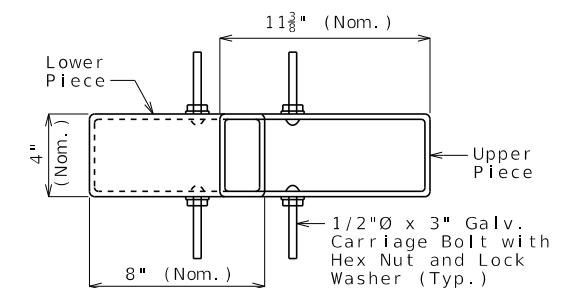
ELEVATION OF DRAIN



PLAN OF STEEL DRAIN OPTION



PART PLAN OF SLAB AT DRAIN



PLAN OF FRP DRAIN OPTION