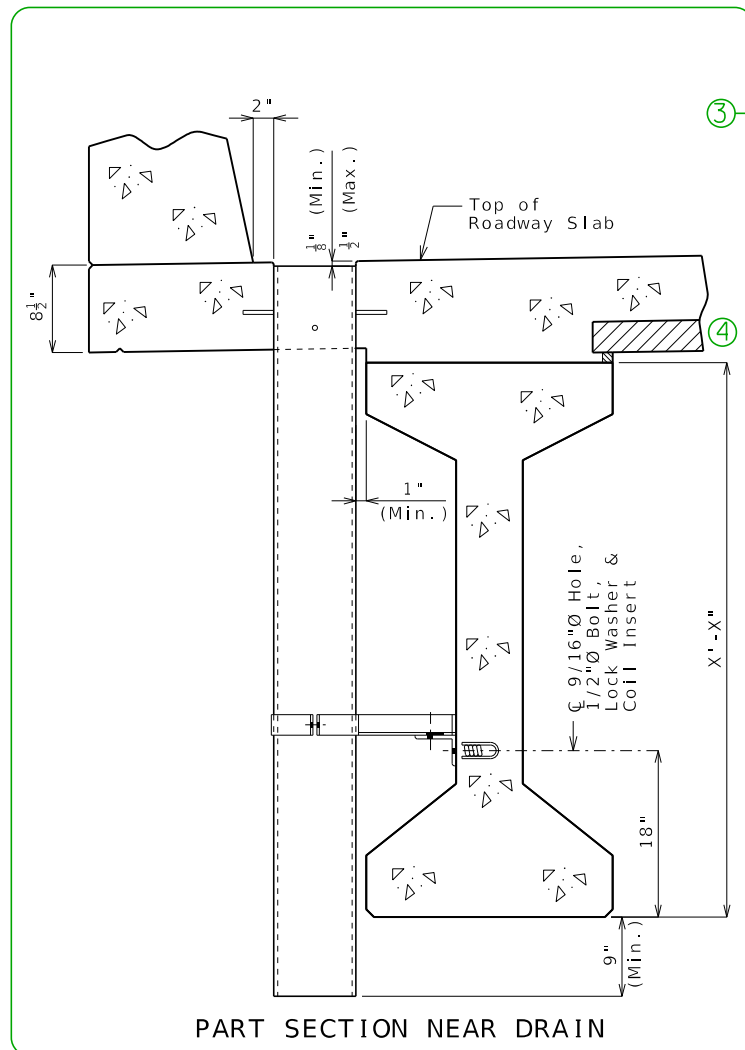




Standard Drawing Guidance (do not show on plans):

- ① Replace example Plan of Slab Showing Slab Drain Locations with actual plan.
- ② Details shown inside the sheet border are for drains transverse to roadway requiring a cantilever of at least 2'-9 1/2" for Type 2, 3 & 4 and at least 3'-3" for Type 6. Use the below details for drains parallel to roadway requiring a cantilever of at least 2'-5 1/2" for Type 2, 3 & 4 and at least 2'-11" for Type 6.
- ③ Details shown inside the sheet border are for Type 2, 3 & 4 girders. Use the below left details for Type 6 girders.
- ④ Delete panel for CIP slab.
- ⑤ Total drain length is equal to 9" + maximum girder and haunch + slab thickness, rounded UP to the next whole inch.



Alternate details for Type B barrier (SBC):

