

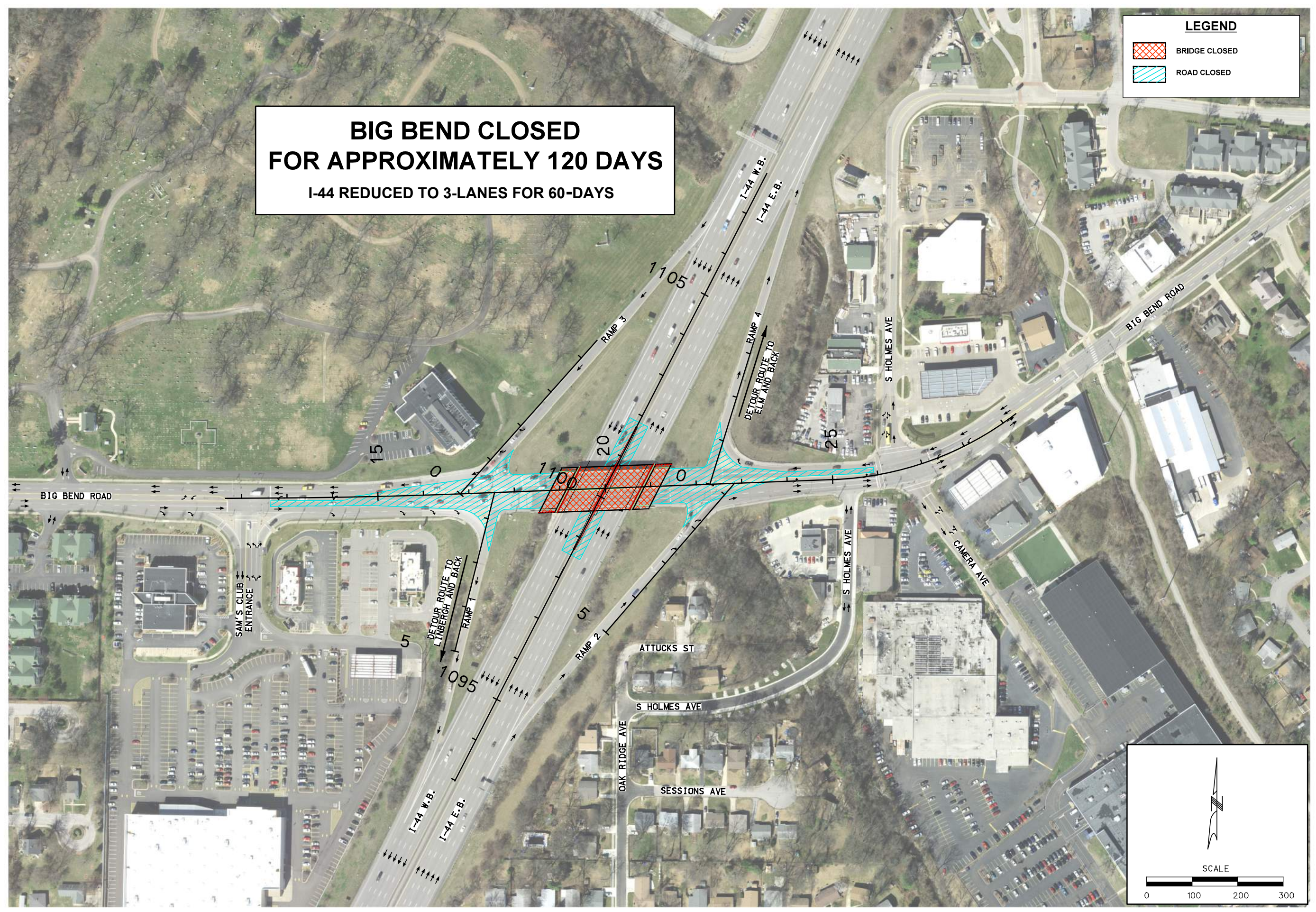



**BIG BEND CLOSED
FOR APPROXIMATELY 120 DAYS**
I-44 REDUCED TO 3-LANES FOR 60-DAYS

LEGEND

-  BRIDGE CLOSED
-  ROAD CLOSED



| | | | |
|--|-------------------|--|---|
| DATE | | 5/11/2020 | |
| DATE PREPARED | | 12/21/2020 | |
| ROUTE | STATE | MO | |
| DISTRICT | SHEET NO. | SL | 3 |
| COUNTY | | ST. LOUIS | |
| JOB NO. | | J6S3270 | |
| CONTRACT ID. | | | |
| PROJECT NO. | | | |
| BRIDGE NO. | | A9023 | |
| DATE | DESCRIPTION | | |
| 6/30/20 | PRELIMINARY PLANS | | |
| 10/2/20 | PRELIMINARY PLANS | | |
| BOARD 3 OF 5 | | | |
|  | | 105 WEST CAPITOL JEFFERSON CITY, MO 65102 1-888-ASK-MODOT (1-888-278-6636) | |
| Burns & McDonnell Engineering Co., Inc. 425 South Woods Mill Road Chesterfield, Missouri 63017 314-682-1500 | | Certificate of Authority No. : 000165 BMed Project No. 94776 | |