

Alternate detail for Type H barrier

Standard Drawing Guidance (do not show on plans):

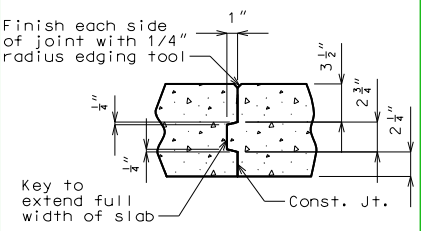
- ① Remove if not required.
- ② Use the following values for clearance to top longitudinal bars:  
 $3\frac{1}{8}$ " for #5 bars  
 $3$ " for #6 bars  
 $2\frac{7}{8}$ " for #7 bars  
 $2\frac{3}{4}$ " for #8 bars  
 Use a triple asterisk when there are different size top bars and add below the single asterisk note the following (modified as needed)(this will be the only asterisk note for CIP decks):

- \*\*\*  $3\frac{1}{8}$ " (#5)
- $3$ " (#6)
- $2\frac{7}{8}$ " (#7)
- $2\frac{3}{4}$ " (#8)

Clearance value based on the #6 top transverse bar used for this standard slab. Values will need to be revised for other size transverse bars.

- ③ The larger negative moment reinforcement shown is grouped and can be deleted if the negative moment steel is the same size as the distribution reinforcement. A set of bars the same size as the distribution bars exist behind the larger bars shown, and will become visible when the larger bars are deleted. (No need to resize)
- ④ The subheadings and negative moment bars are grouped and can be deleted for single span bridges. <Ctrl> U to ungroup.
- ⑤ Place appropriate slab pouring sequence cell and modify as required.

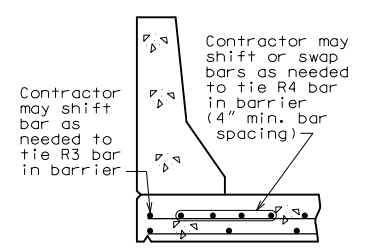
- ⑥ Use alternate detail for CIP decks:  
 For 8" thick slabs, change top dimension to  $3\frac{1}{4}$ " and center dimension to  $2\frac{1}{2}$ ".



SLAB CONSTRUCTION JOINT

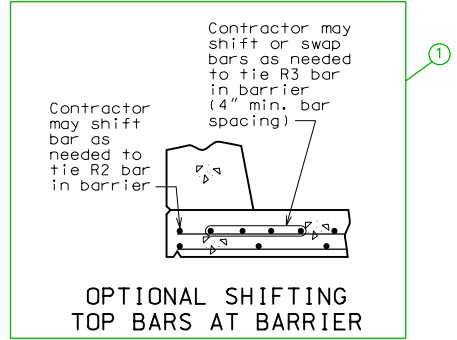
- ⑦ Remove for CIP deck

Girder spacing and reinforcement size & spacing shown are not necessarily standard. Follow design.

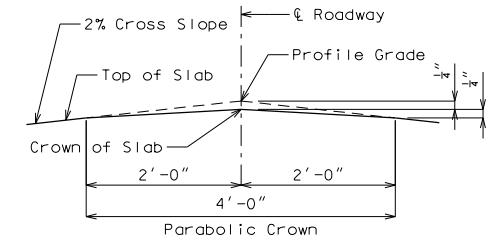


OPTIONAL SHIFTING TOP BARS AT BARRIER

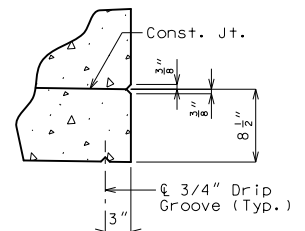
SLAB09\_40ft\_symm Effective: Jan. 2022 Supersedes: July 2021



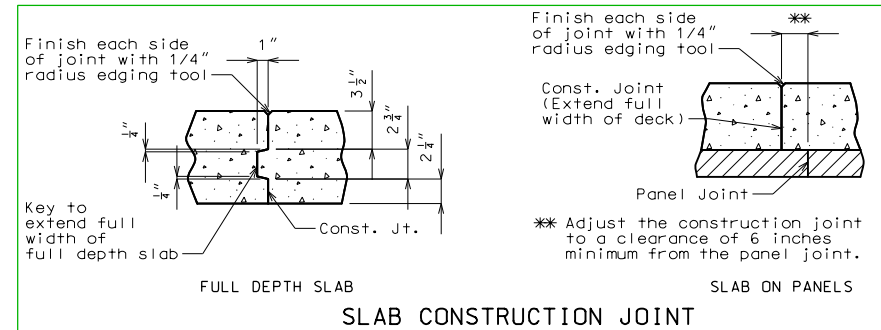
OPTIONAL SHIFTING TOP BARS AT BARRIER



DETAIL A



DETAIL B



SLAB CONSTRUCTION JOINT

- Notes:
- ⑦ For details of precast prestressed panels, see Sheet No. .
  - For reinforcement of barrier not shown, see Sheet No. .
  - For Theoretical Bottom of Slab Elevations, Girder Camber Diagram and Theoretical Slab Haunching Diagram, see Sheet No. .
  - For Plan of Slab Showing Reinforcement, see Sheet No. .

SLAB DETAILS

Sheet No. of

Detailed Checked

Note: This drawing is not to scale. Follow dimensions.

DATE PREPARED	11/10/2021
ROUTE	* MO
DISTRICT	BR * SHEET NO.
COUNTY	* MO
JOB NO.	*
CONTRACT ID.	*
PROJECT NO.	
BRIDGE NO.	SLAB09
DESCRIPTION	
DATE	
TRANSPORTATION	

MISSOURI HIGHWAYS AND TRANSPORTATION COMMISSION

MoDOT

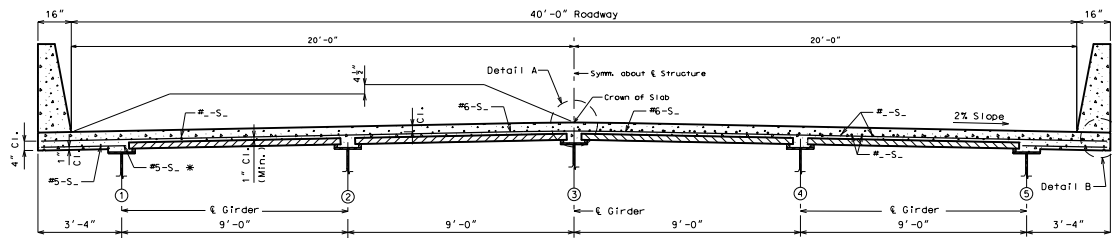
105 WEST CAPITOL  
JEFFERSON CITY, MO 65102  
1-888-ASK-MODOT (1-888-275-6636)

IF A SEAL IS PRESENT ON THIS SHEET IT HAS BEEN ELECTRONICALLY SEALED AND DATED.

# AUXILIARY DETAILS

## Panel Deck

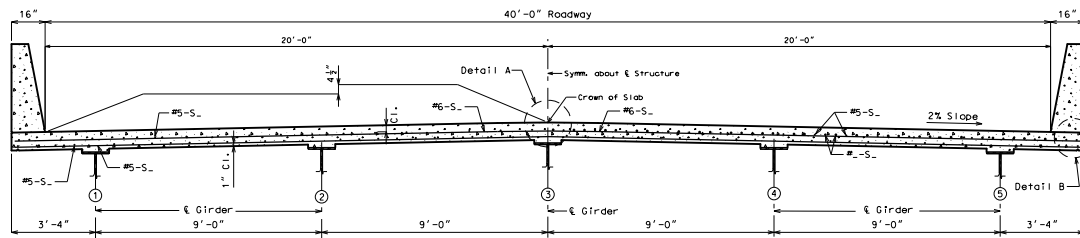
## CIP Deck



HALF SECTION NEAR MIDSPAN      HALF SECTION NEAR INTERMEDIATE BENT

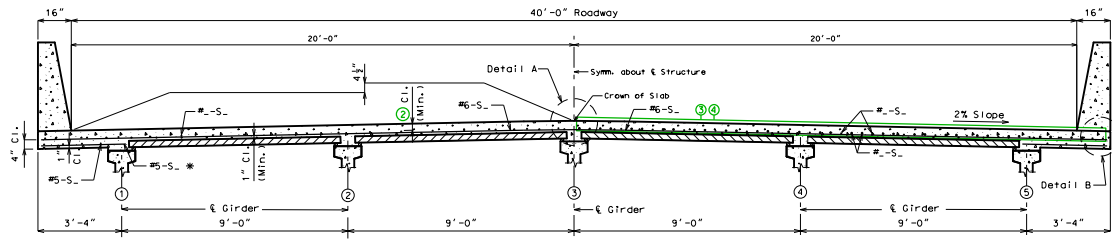
### SECTION THRU SLAB

\* Alternate bar shape available, see barrier sheet.



HALF SECTION NEAR MIDSPAN      HALF SECTION NEAR INTERMEDIATE BENT

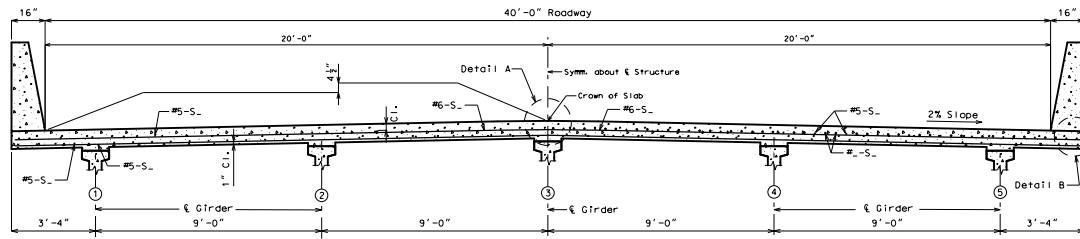
### SECTION THRU SLAB



HALF SECTION NEAR MIDSPAN      HALF SECTION NEAR INTERMEDIATE BENT

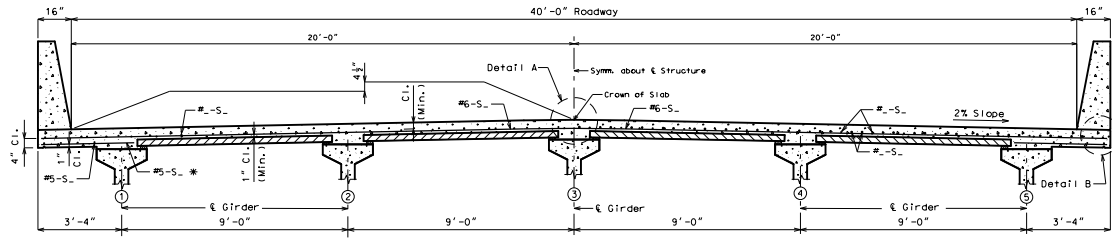
### SECTION THRU SLAB

\* Alternate bar shape available, see barrier sheet.



HALF SECTION NEAR MIDSPAN      HALF SECTION NEAR INTERMEDIATE BENT

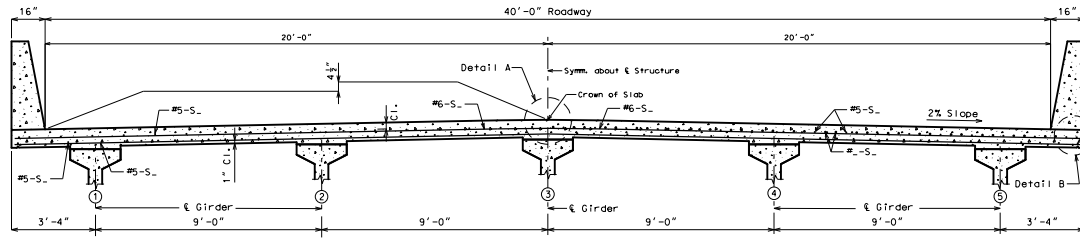
### SECTION THRU SLAB



HALF SECTION NEAR MIDSPAN      HALF SECTION NEAR INTERMEDIATE BENT

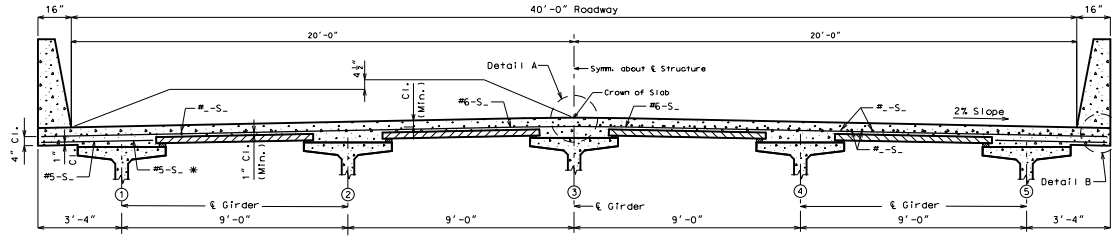
### SECTION THRU SLAB

\* Alternate bar shape available, see barrier sheet.



HALF SECTION NEAR MIDSPAN      HALF SECTION NEAR INTERMEDIATE BENT

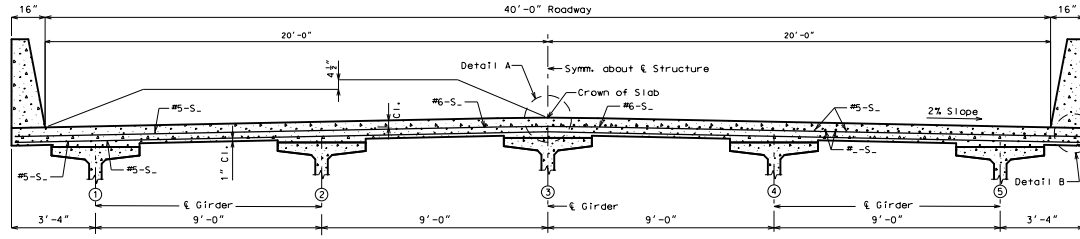
### SECTION THRU SLAB



HALF SECTION NEAR MIDSPAN      HALF SECTION NEAR INTERMEDIATE BENT

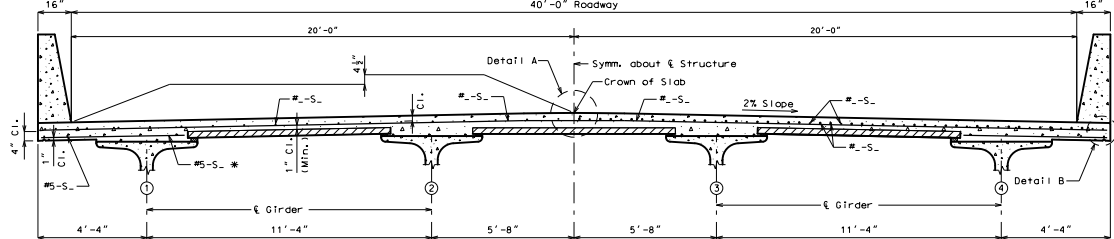
### SECTION THRU SLAB

\* Alternate bar shape available, see barrier sheet.



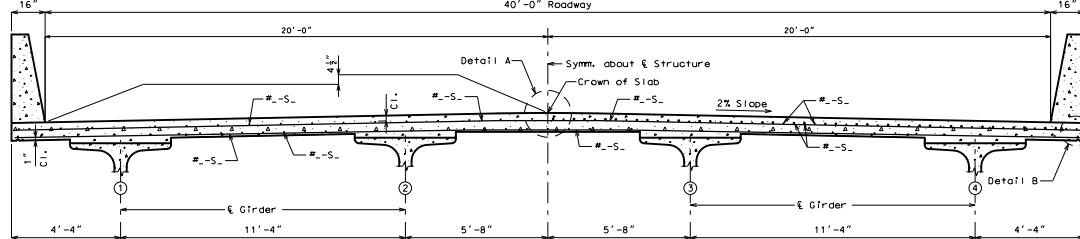
HALF SECTION NEAR MIDSPAN      HALF SECTION NEAR INTERMEDIATE BENT

### SECTION THRU SLAB



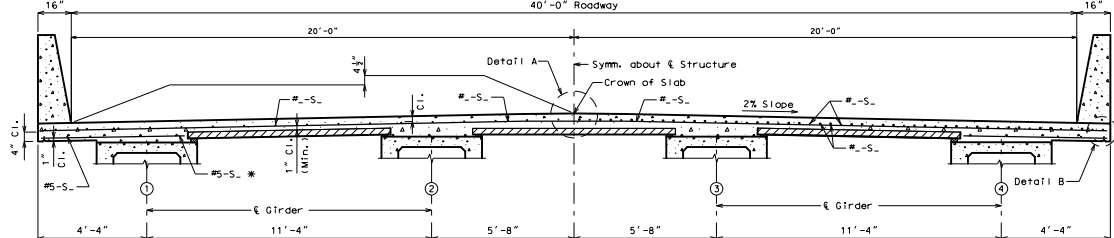
HALF SECTION NEAR MIDSPAN      HALF SECTION NEAR INTERMEDIATE BENT

### SECTION THRU SLAB



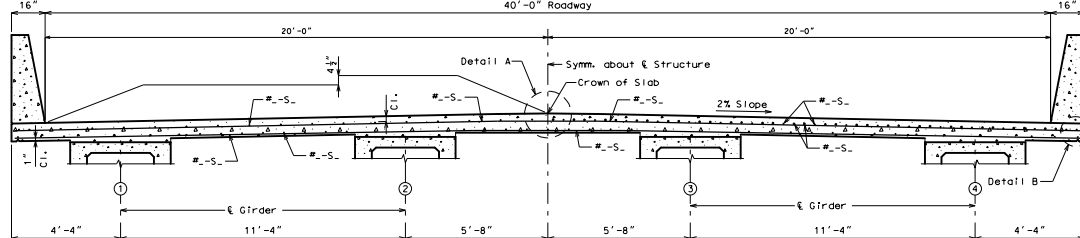
HALF SECTION NEAR MIDSPAN      HALF SECTION NEAR INTERMEDIATE BENT

### SECTION THRU SLAB



HALF SECTION NEAR MIDSPAN      HALF SECTION NEAR INTERMEDIATE BENT

### SECTION THRU SLAB



HALF SECTION NEAR MIDSPAN      HALF SECTION NEAR INTERMEDIATE BENT

### SECTION THRU SLAB

Plate Girder  
Type 2,3,4  
Type 6  
Bulb-tee  
NU  
Box