

**DESIGN DESIGNATION**

AADT - 2024 = 341  
 DHV = 12%  
 T = 4%  
 V = 35 MPH

FUNCTIONAL CLASSIFICATION- MAJOR COLLECTOR

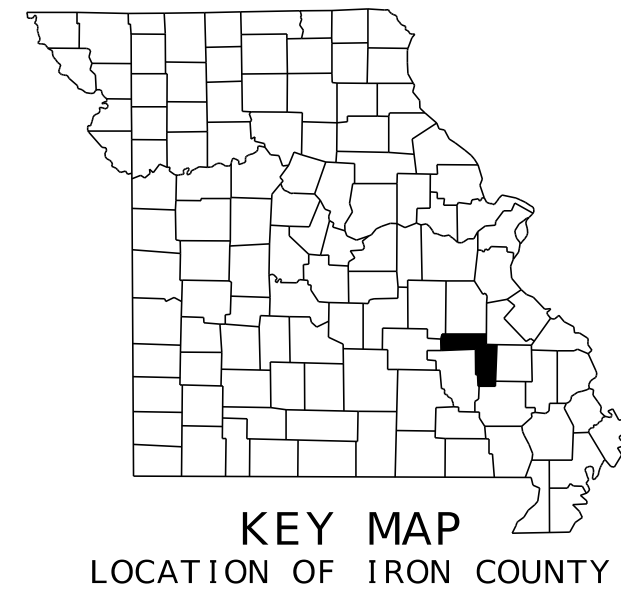
NORMAL RIGHT OF WAY  
 WILL BE ACQUIRED

# MISSOURI HIGHWAYS AND TRANSPORTATION COMMISSION

## PLANS FOR PROPOSED STATE HIGHWAY

### IRON COUNTY

### RIGHT OF WAY PLANS



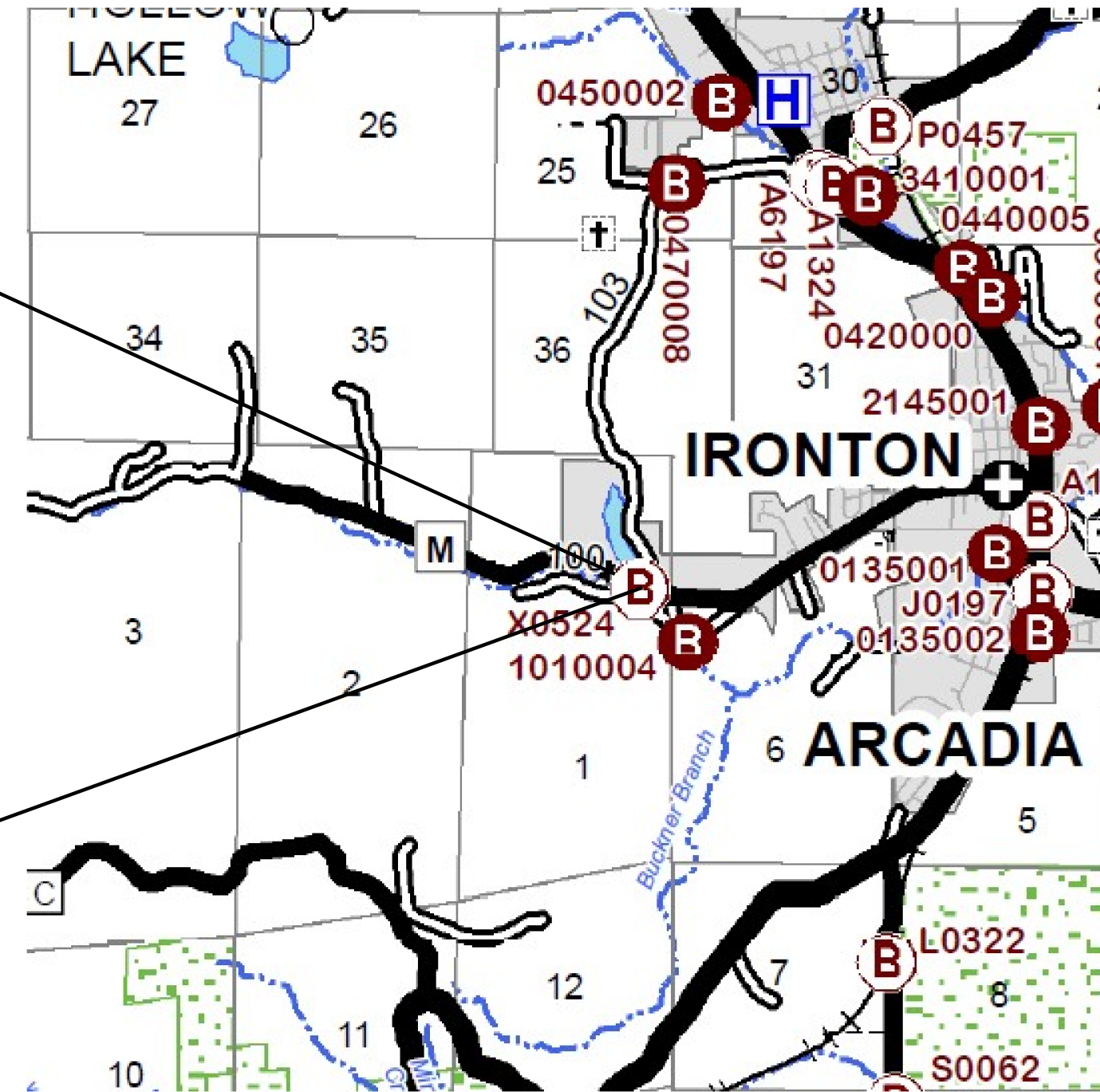
DESCRIPTION	SHEET NUMBER
TITLE SHEET -----	1
TYPICAL SECTIONS (TS) (1 SHEET)----	2
PLAN AND PROFILE (PP)-----	4
COORDINATE POINTS (CP)-----	5
CROSS SECTIONS (XS)-----	1-12

DATE PREPARED 2/1/2026	
ROUTE M	STATE MO
DISTRICT SE	SHEET NO. 1
COUNTY IRON	
JOB NO. JSE0120	
CONTRACT ID.	
PROJECT NO.	
BRIDGE NO.	

PROJECT LIMITS  
 SIDEWALKS AND  
 EXTEND BOX CULVERT

STA 97+80.65

STA 88+06.98



T34N  
 T33N

R03E | R04E

**CONVENTIONAL SYMBOLS**  
 (USED IN PLANS)

	EXISTING	NEW
BUILDINGS AND STRUCTURES	[Symbol]	[Symbol]
GUARD RAIL	[Symbol]	[Symbol]
GUARD CABLE	[Symbol]	[Symbol]
CONCRETE RIGHT-OF-WAY MARKER	[Symbol]	[Symbol]
STEEL RIGHT-OF-WAY MARKER	[Symbol]	[Symbol]
LOCATION SURVEY MARKER	[Symbol]	[Symbol]
UTILITIES		
FIBER OPTICS	[Symbol]	[Symbol]
OVERHEAD TELEPHONE	[Symbol]	[Symbol]
UNDERGROUND TELEPHONE	[Symbol]	[Symbol]
OVERHEAD POWER	[Symbol]	[Symbol]
UNDERGROUND POWER	[Symbol]	[Symbol]
GAS	[Symbol]	[Symbol]
WATER	[Symbol]	[Symbol]
MANHOLE	[Symbol]	[Symbol]
FIRE HYDRANT	[Symbol]	[Symbol]
WATER VALVE	[Symbol]	[Symbol]
WATER METER	[Symbol]	[Symbol]
DROP INLET	[Symbol]	[Symbol]
DITCH BLOCK	[Symbol]	[Symbol]
GROUND MOUNTED SIGN	[Symbol]	[Symbol]
LIGHT POLE	[Symbol]	[Symbol]
H-FRAME POWER POLE	[Symbol]	[Symbol]
TELEPHONE PEDESTAL	[Symbol]	[Symbol]
FENCE		
CHAIN LINK	[Symbol]	[Symbol]
WOVEN WIRE	[Symbol]	[Symbol]
GATE POST	[Symbol]	[Symbol]
BENCHMARK	[Symbol]	[Symbol]

NOTE: DASHED OR OPEN SYMBOLS INDICATE EXISTING FEATURES

THE EXISTENCE AND APPROXIMATE LOCATION OF UTILITY FACILITIES KNOWN TO EXIST, AS SHOWN ON THE PLANS, ARE BASED ON THE BEST INFORMATION AVAILABLE TO THE COMMISSION AT THIS TIME. THIS INFORMATION IS PROVIDED BY THE COMMISSION "AS-IS" AND THE COMMISSION EXPRESSLY DISCLAIMS ANY REPRESENTATION OR WARRANTY AS TO THE COMPLETENESS, ACCURACY, OR SUITABILITY OF THE INFORMATION FOR ANY USE. RELIANCE UPON THIS INFORMATION IS DONE AT THE RISK AND PERIL OF THE USER, AND THE COMMISSION SHALL NOT BE LIABLE FOR ANY DAMAGES THAT MAY ARISE FROM ANY ERROR IN THE INFORMATION. IT IS, THEREFORE, THE RESPONSIBILITY OF THE CONTRACTOR TO VERIFY THE EXISTENCE, LOCATION AND STATUS OF ANY FACILITY. SUCH VERIFICATION INCLUDES DIRECT CONTACT WITH THE LISTED UTILITIES.

**LENGTH OF PROJECT**

BEGINNING OF PROJECT	STA 88+06.98
END OF PROJECT	STA 97+80.65
APPARENT LENGTH	973.67 FEET

TOTAL CORRECTIONS	0 FEET
NET LENGTH OF PROJECT	973.67 FEET

STATE LENGTH 0.184 MILES

FOR INFORMATION ONLY  
 ESTIMATED DISTURBED ACRES XX ACRES

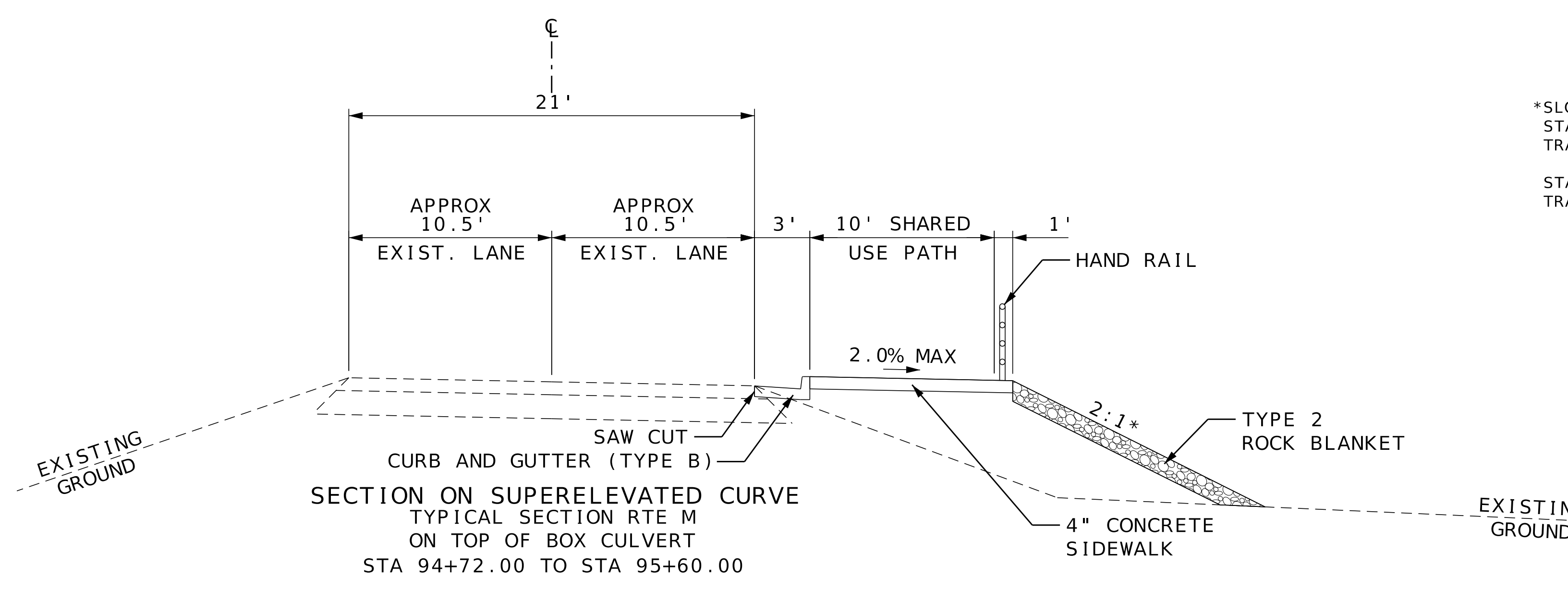
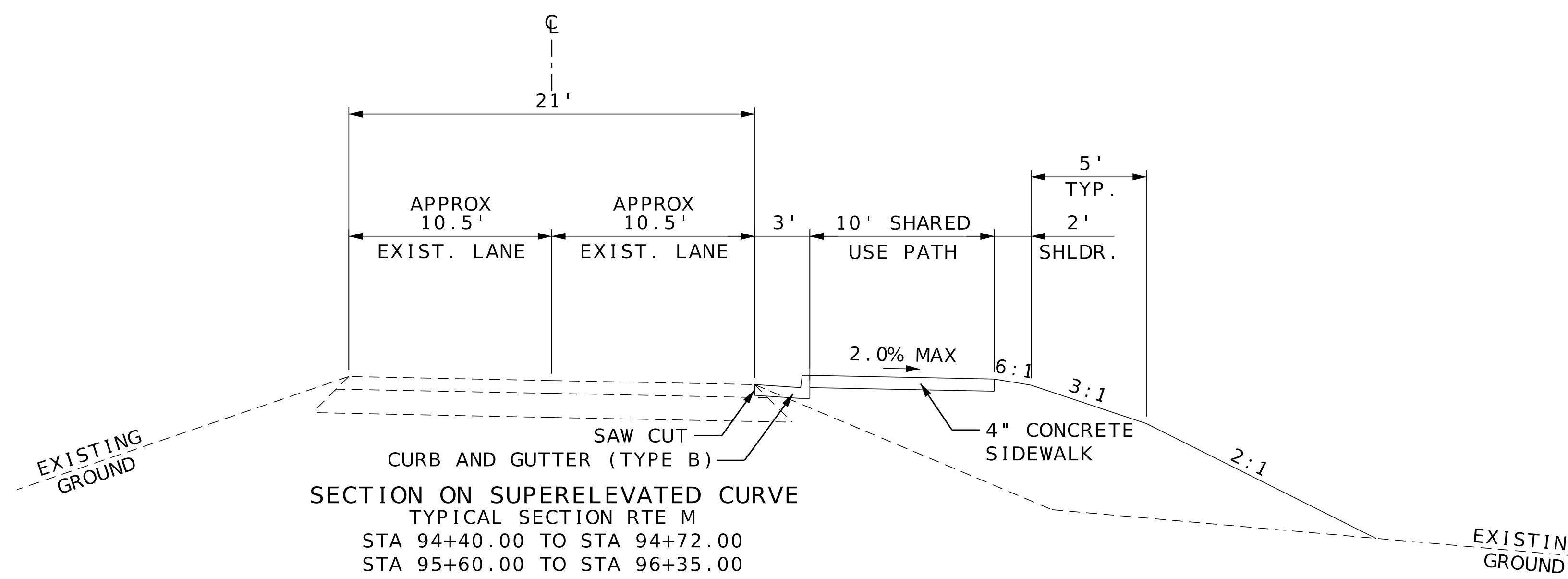
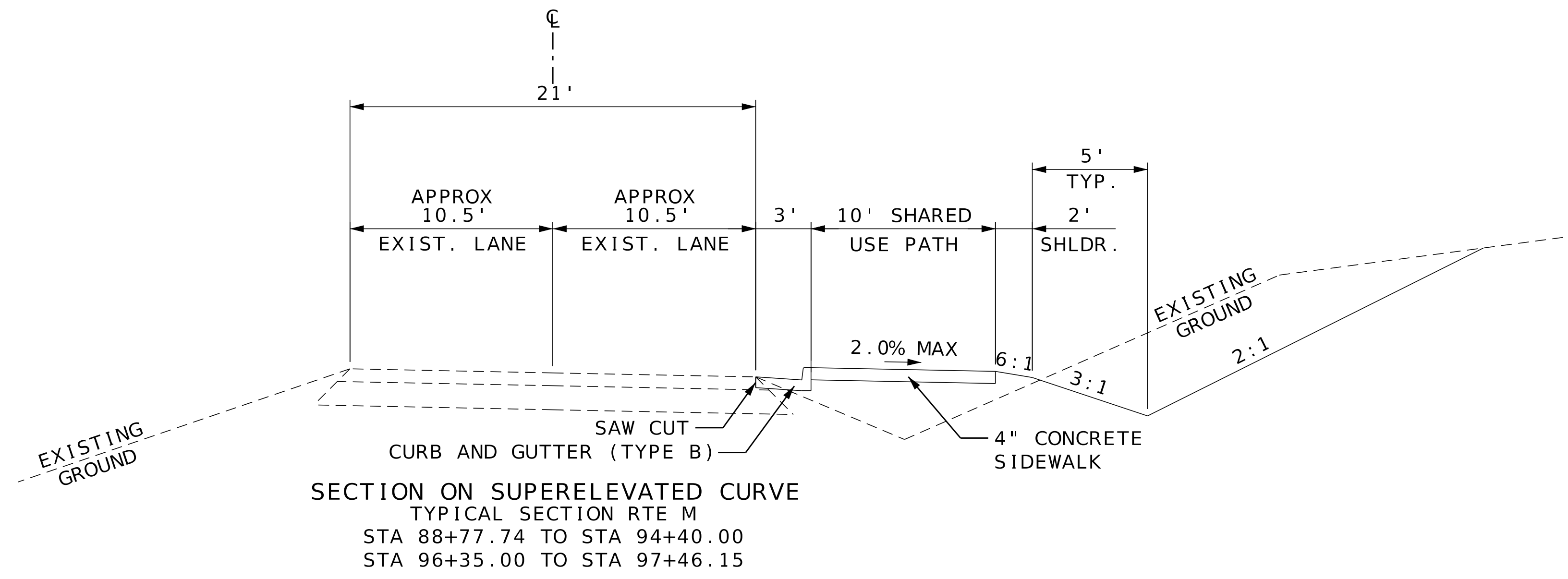
DESCRIPTION	DATE

MISSOURI HIGHWAYS AND TRANSPORTATION COMMISSION

105 WEST CAPITOL  
 JEFFERSON CITY, MO 65102  
 1-888-ASK-MODOT (1-888-275-6636)

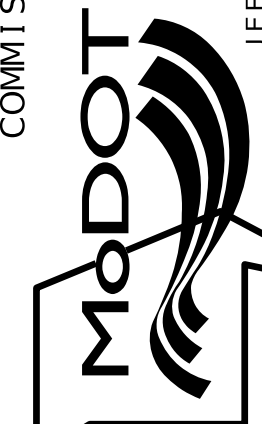

**Pickering**

Pickering Firm, Inc.  
 101 South Church Street, Suite 303  
 Jonesboro, AR 72401  
 Phone: 870.336.0117  
 Missouri Certificate of Authority No. 2012006790



\*SLOPE TRANSITION:  
STA. 94+72.00 TO STA. 95+02.00  
TRANSITION 3:1 TO 2:1  
  
STA. 95+30.00 TO STA. 95+60.00  
TRANSITION 2:1 TO 3:1

TYPICAL SECTION  
SHEET 1 OF 1  
DRAWING NOT TO SCALE. FOLLOW DIMENSIONS

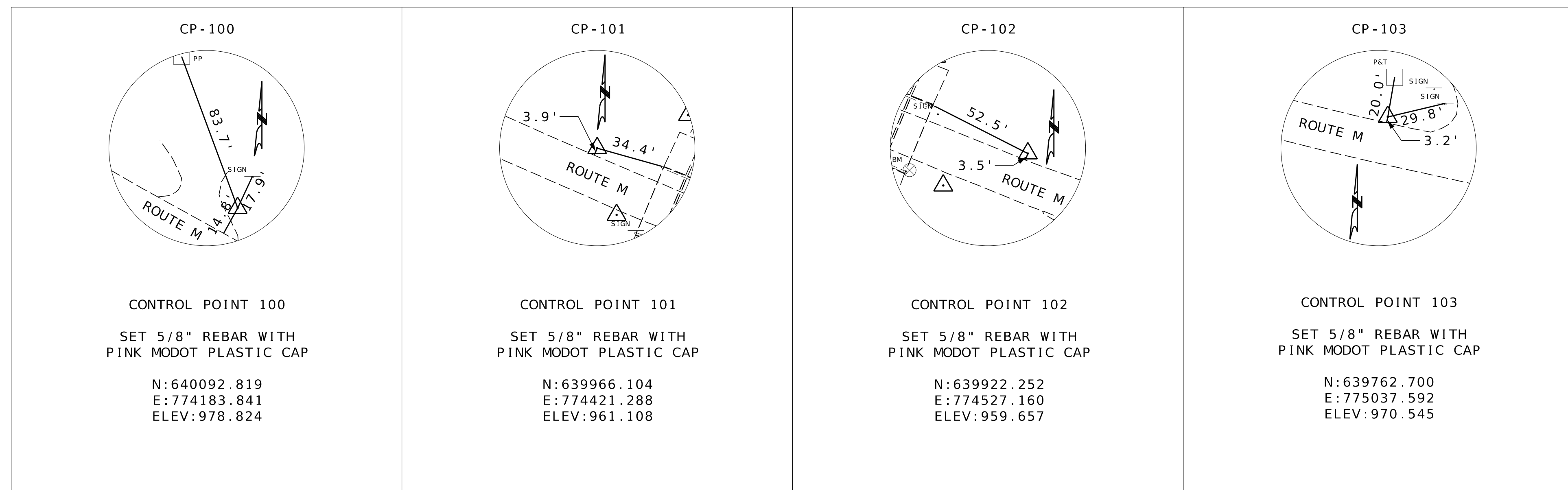
DATE PREPARED 2/1/2026	
ROUTE M	STATE MO
DISTRICT SE	SHEET NO. 2
COUNTY IRON	
JOB NO. JSE0120	
CONTRACT ID.	
PROJECT NO.	
BRIDGE NO.	
DESCRIPTION	
DATE	
MISSOURI HIGHWAYS AND TRANSPORTATION COMMISSION	 105 WEST CAPITOL JEFFERSON CITY, MO 65102 1-888-ASK-MODOT (1-888-275-6636)
 <b>Pickering</b> Pickering Firm, Inc. 101 South Church Street, Suite 303 Jonesboro, AR 72401 Phone: 870.336.0117 Missouri Certificate of Authority No. 2012006790	



COORDINATE POINT LISTING								
SHEET NO	STATION	LOCATION	OFFSET (USFT)	MODIFIED STATE PLANE (GROUND)			DESCRIPTION	GPK POINT ID
				NORTHING (US SURVEY FT)	EASTING (US SURVEY FT)	ELEVATION (US SURVEY FT)		
<b>PROJECT CONTROL POINTS</b>								
4	98+34.78	RTE M	26.47 RT	640092.819	774183.841	978.824	A 5/8" REBAR W/ PINK PLASTIC CAP SET NORTH OF RTE M IN A GRASS ISLAND BETWEEN ENTRANCES	CP100
4	95+64.25	RTE M	14.98 RT	639966.104	774421.288	961.108	A 5/8" REBAR W/ PINK PLASTIC CAP SET NORTH OF RTE M AND WEST OF THE BOX CULVERT	CP101
4	94+49.17	RTE M	15.10 RT	639922.252	774527.160	959.657	A 5/8" REBAR W/ PINK PLASTIC CAP SET NORTH OF RTE M AND EAST OF THE BOX CULVERT	CP102
4	89+11.82	RTE M	14.87 RT	639762.700	775037.592	970.545	A 5/8" REBAR W/ PINK PLASTIC CAP SET NORTH OF RTE M AND WEST OF SHEPARD MOUNTAIN LAKE ROAD	CP103
4	99+54.42	RTE M	32.57 RT	640155.262	774082.775	984.133	A COTTON PICKER SPINDLE IN THE BASE OF A RED OAK TREE	BM1
4	99+02.09	RTE M	15.78 LT	639913.696	774466.585	957.361	A CHISELED SQUARE IN THE EAST END OF THE SOUTH HEADWALL	BM2
4	89+60.65	RTE M	35.44 RT	639793.978	774995.019	974.626	A COTTON PICKER SPINDLE IN THE BASE OF A RED OAK TREE	BM3
<b>ALIGNMENTS</b>								
4	84+85.00	RTE M		639676.889	775454.603		PC	
4	88+06.98	RTE M		639726.060	775136.511		BEGIN PROJECT	
4	93+90.23	RTE M		639886.932	774576.555		PI	
4	97+80.65	RTE M		640044.519	774219.564		END PROJECT	
4	102+58.32	RTE M		640288.658	773809.408		PT	

ALL PROJECT COORDINATES HAVE BEEN PROJECTED FROM THE MISSOURI STATE PLANE COORDINATE (SPC) SYSTEM OF 1983 USING AN AVERAGE PROJECT PROJECTION (GRID TO GROUND) FACTOR. TO GET BACK TO STATE PLANE COORDINATES MULTIPLY THE PROJECT COORDINATES BY THE AVERAGE GRID FACTOR AS SHOWN IN THE "REFERENCE CONTROL INFORMATION" PORTION OF THIS TABLE.

<b>PROJECT COORDINATE INFORMATION</b>	
COORDINATE SYSTEM	MISSOURI STATE PLANE (GRID)
HORIZONTAL DATUM	NAD83 (2011)
VERTICAL DATUM	NAVD 88
GEOID MODEL	2018
ELEVATIONS DETERMINED BY	XX
PROJECT PROJECTION FACTOR	1.000000
<b>REFERENCE CONTROL INFORMATION</b>	
COORDINATE SYSTEM	COORDINATE SYSTEM OF 1983
CONTROL STATION	MODOT VRS
DESIGNATION	XX
CORS_ID	XX
PID	XX
LATITUDE	XX
LONGITUDE	XX
NORTHING (M)	XX
EASTING (M)	XX
ZONE	EAST ZONE
PROJECT AVERAGE GRID FACTOR	1.000000
<b>EXAMPLE OF PROJECT COORDINATE TO S.P.C.</b>	
PROJECT NORTHING X AVERAGE GRID FACTOR = STATE PLANE NORTHING	
PROJECT EASTING X AVERAGE GRID FACTOR = STATE PLANE EASTING	
EXAMPLE: CONTROL POINT #2	
N	X
E	X
<b>LINEAR UNIT CONVERSION</b>	
1 METER = 3.280833333 US SURVEY FEET (USFT)	



<p>CONTROL POINT 100</p> <p>SET 5/8" REBAR WITH PINK MODOT PLASTIC CAP</p> <p>N: 640092.819 E: 774183.841 ELEV: 978.824</p>	<p>CONTROL POINT 101</p> <p>SET 5/8" REBAR WITH PINK MODOT PLASTIC CAP</p> <p>N: 639966.104 E: 774421.288 ELEV: 961.108</p>	<p>CONTROL POINT 102</p> <p>SET 5/8" REBAR WITH PINK MODOT PLASTIC CAP</p> <p>N: 639922.252 E: 774527.160 ELEV: 959.657</p>	<p>CONTROL POINT 103</p> <p>SET 5/8" REBAR WITH PINK MODOT PLASTIC CAP</p> <p>N: 639762.700 E: 775037.592 ELEV: 970.545</p>
---	---	---	---

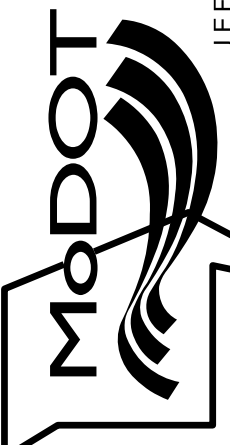
COORDINATE POINT SHEET  
SHEET 1 OF 1

DATE PREPARED	2/1/2026
ROUTE	M
STATE	MO
DISTRICT	SE
SHEET NO.	5
COUNTY	IRON
JOB NO.	JSE0120
CONTRACT ID.	
PROJECT NO.	
BRIDGE NO.	
DESCRIPTION	
DATE	
MISSOURI HIGHWAYS AND TRANSPORTATION COMMISSION	
	105 WEST CAPITOL JEFFERSON CITY, MO 65102 1-888-ASK-MODOT (1-888-275-6636)
	Pickering Firm, Inc. 101 South Church Street, Suite 303 Jonesboro, AR 72401 Phone: 870.336.0117 Missouri Certificate of Authority No. 2012006790

DATE PREPARED 2/1/2026	
ROUTE M	STATE MO
DISTRICT SE	SHEET NO. 1
COUNTY IRON	
JOB NO. JSE0120	
CONTRACT ID.	
PROJECT NO.	
BRIDGE NO.	

DESCRIPTION	DATE

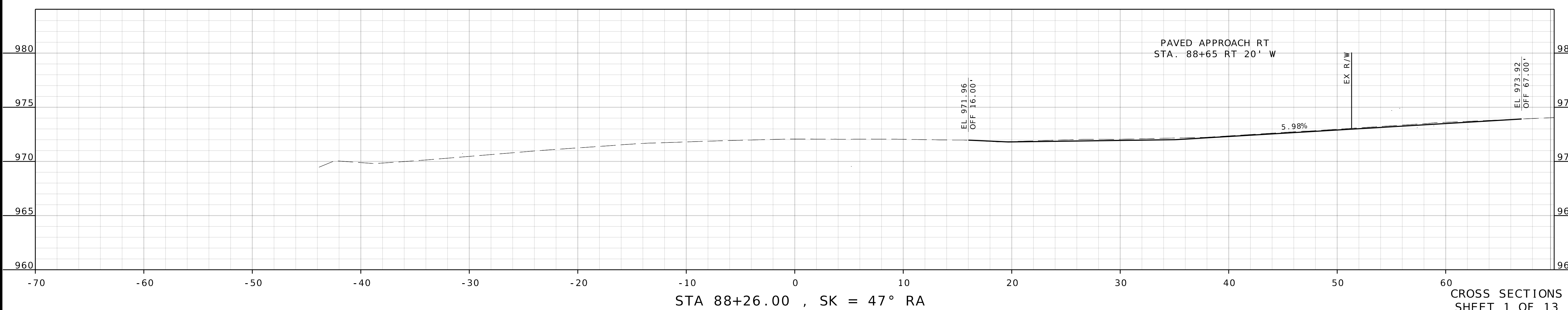
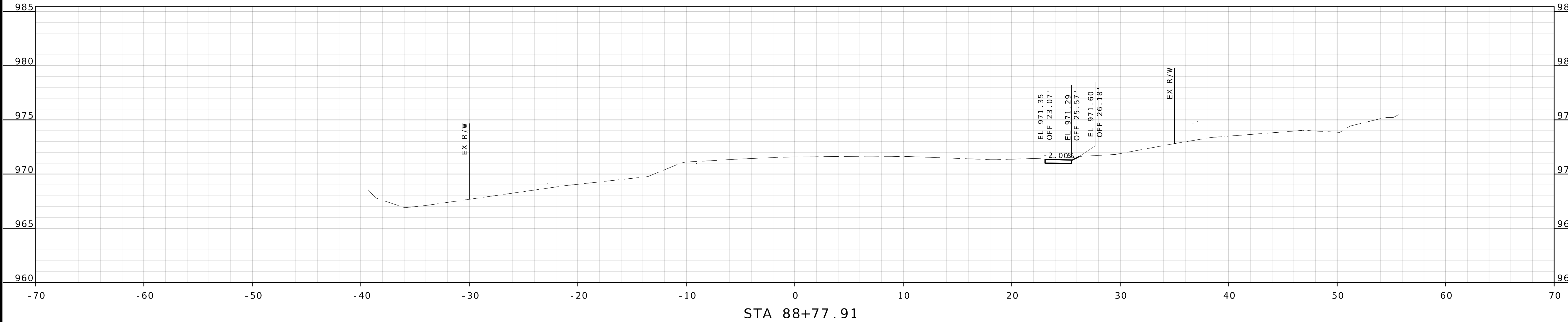
MISSOURI HIGHWAYS AND TRANSPORTATION COMMISSION



105 WEST CAPITOL  
JEFFERSON CITY, MO 65102  
1-888-ASK-MODOT (1-888-275-6636)



**Pickering Firm, Inc.**  
101 South Church Street, Suite 303  
Jonesboro, AR 72401  
Phone: 870.336.0117  
Missouri Certificate of Authority No. 2012006790



DATE PREPARED 2/1/2026	
ROUTE M	STATE MO
DISTRICT SE	SHEET NO. 2
COUNTY IRON	
JOB NO. JSE0120	
CONTRACT ID.	
PROJECT NO.	
BRIDGE NO.	

DATE	DESCRIPTION

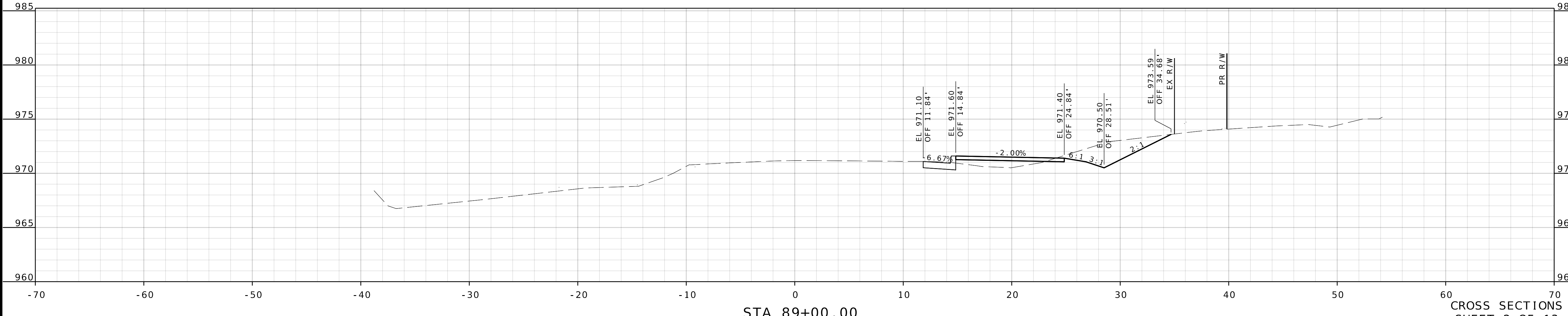
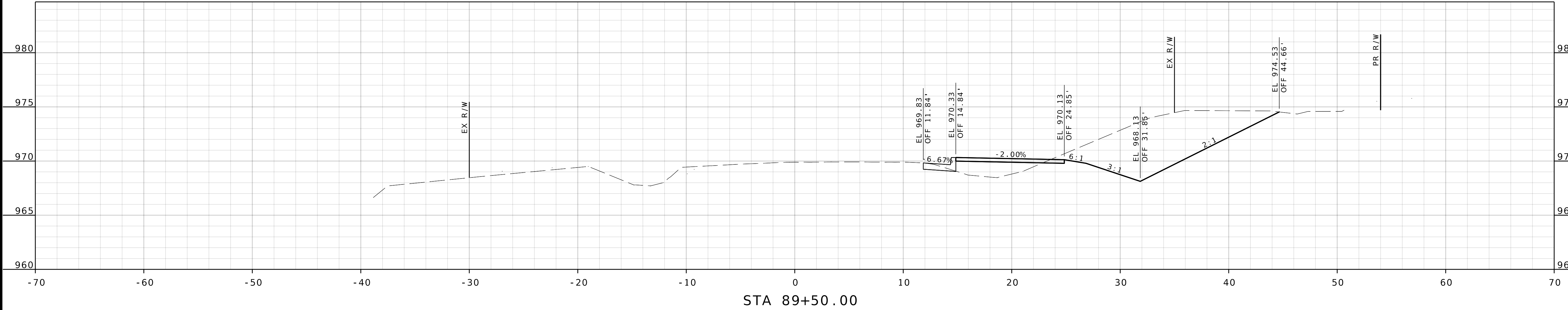
MISSOURI HIGHWAYS AND TRANSPORTATION  
COMMISSION



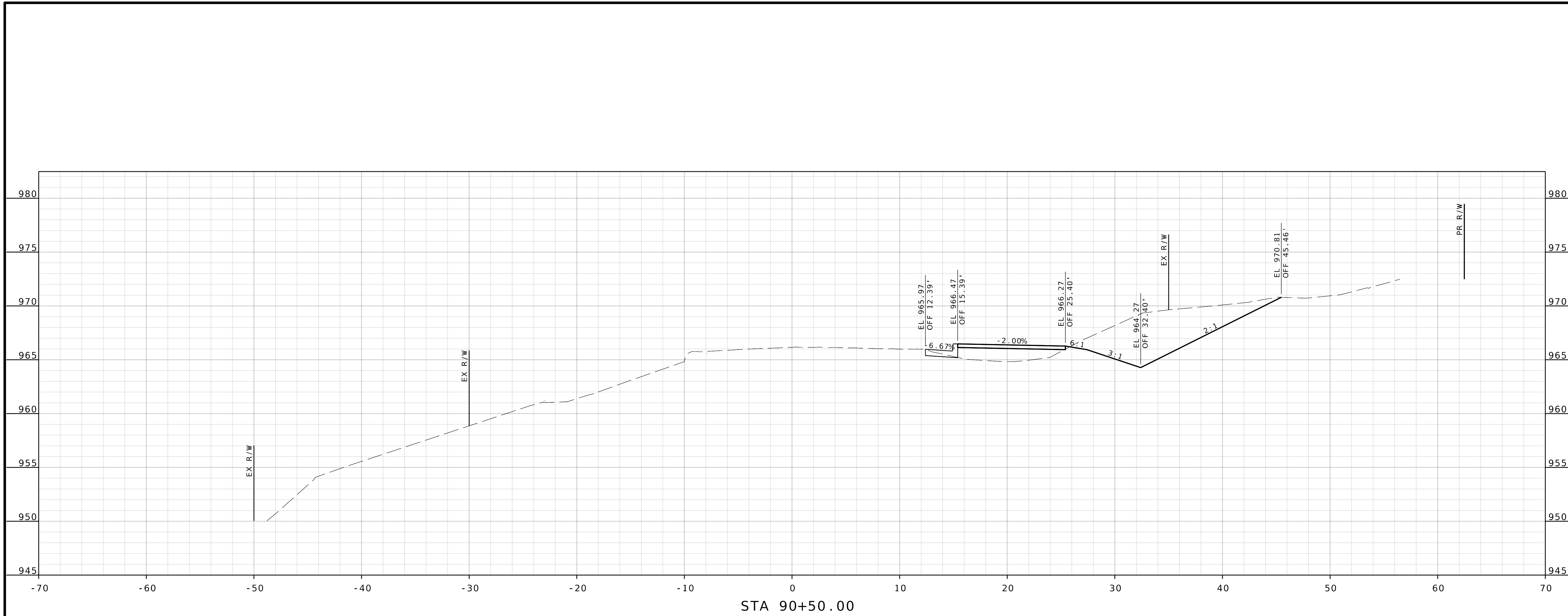
105 WEST CAPITOL  
JEFFERSON CITY, MO 65102  
1-888-ASK-MODOT (1-888-275-6636)



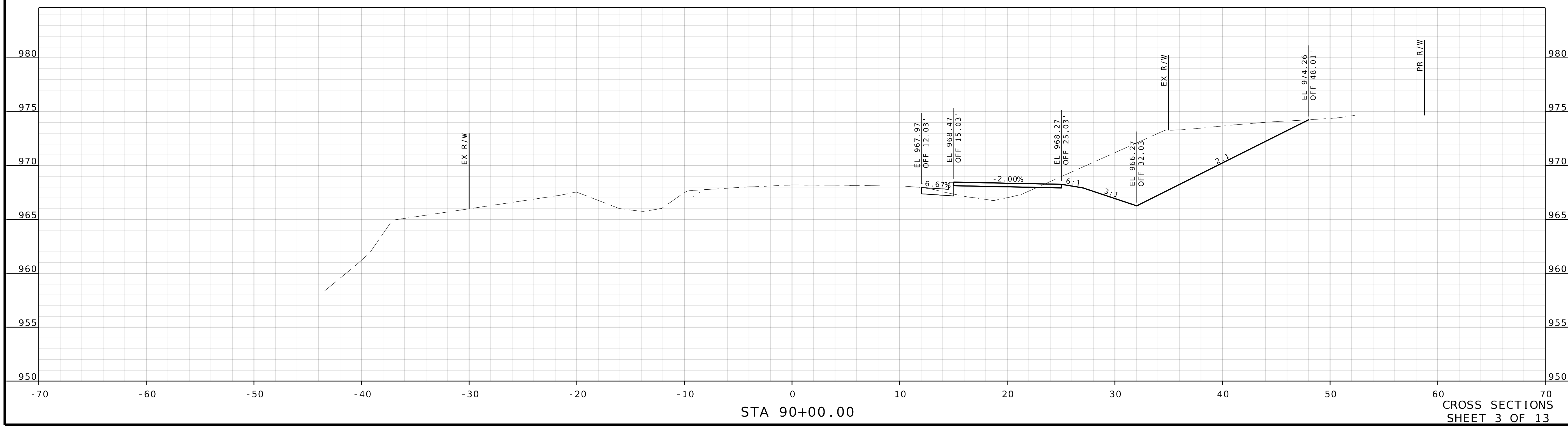
**Pickering Firm, Inc.**  
101 South Church Street, Suite 303  
Jonesboro, AR 72401  
Phone: 870.336.0117  
Missouri Certificate of Authority No. 2012006790



CROSS SECTIONS  
SHEET 2 OF 13



STA 90+50.00



STA 90+00.00

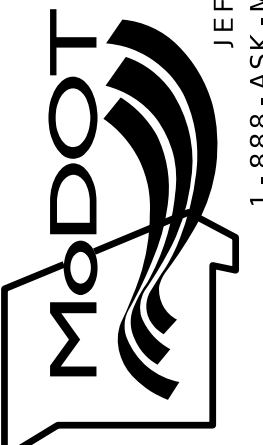
CROSS SECTIONS  
SHEET 3 OF 13

DATE PREPARED 2/1/2026	
ROUTE M	STATE MO
DISTRICT SE	SHEET NO. 3
COUNTY IRON	
JOB NO. JSE0120	
CONTRACT ID.	

PROJECT NO.  
BRIDGE NO.

DATE	DESCRIPTION

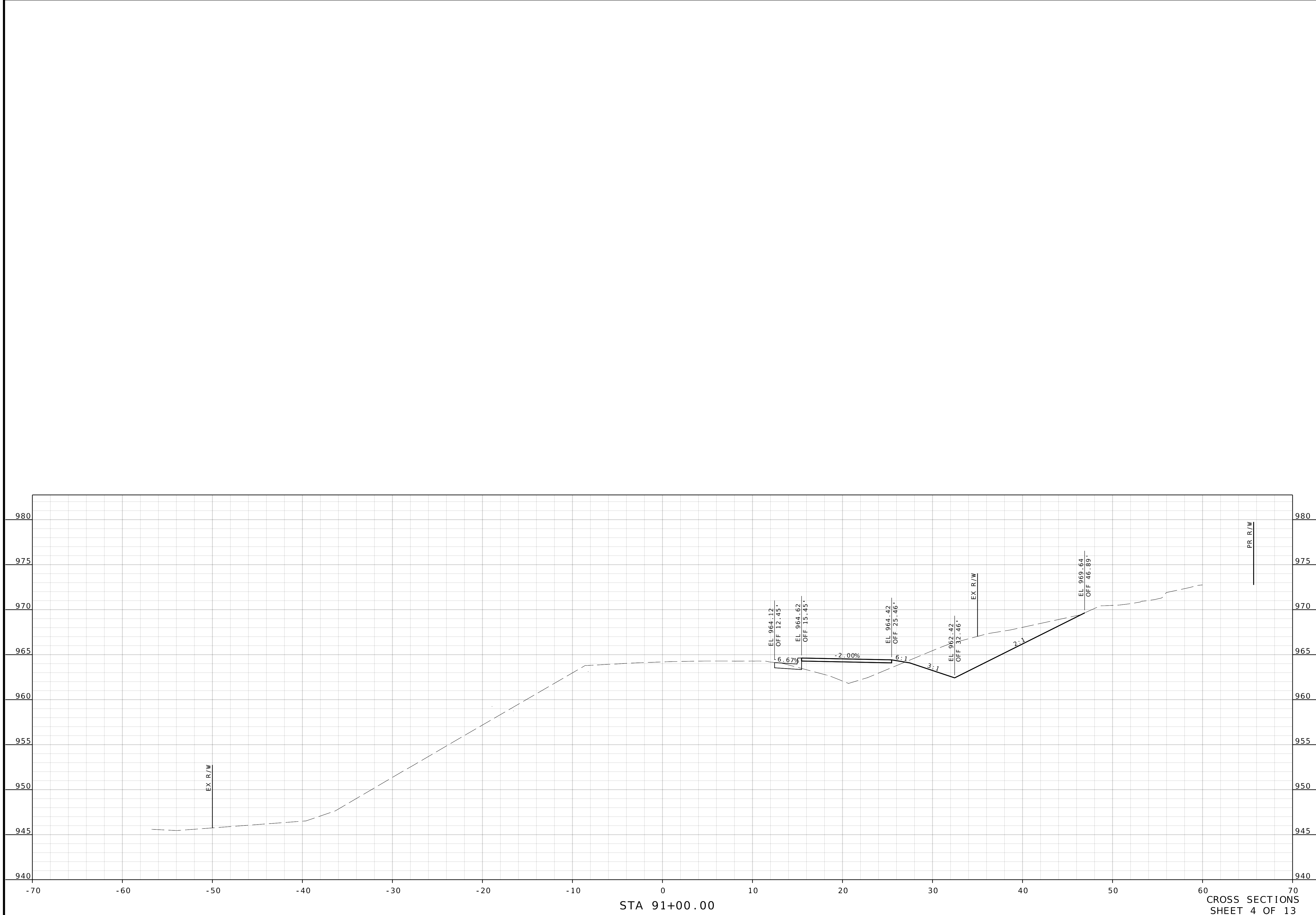
MISSOURI HIGHWAYS AND TRANSPORTATION COMMISSION



105 WEST CAPITOL  
JEFFERSON CITY, MO 65102  
1-888-ASK-MODOT (1-888-275-6636)



**Pickering**  
Pickering Firm, Inc.  
101 South Church Street, Suite 303  
Jonesboro, AR 72401  
Phone: 870.336.0117  
Missouri Certificate of Authority No. 2012006790

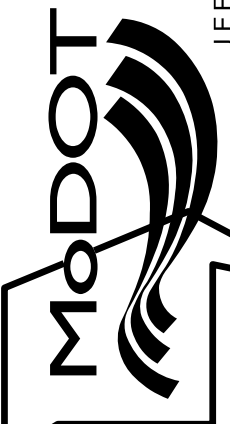


STA 91+00.00

CROSS SECTIONS  
SHEET 4 OF 13

DATE PREPARED 2/1/2026	
ROUTE M	STATE MO
DISTRICT SE	SHEET NO. 4
COUNTY IRON	
JOB NO. JSE0120	
CONTRACT ID.	
PROJECT NO.	
BRIDGE NO.	
DATE	DESCRIPTION

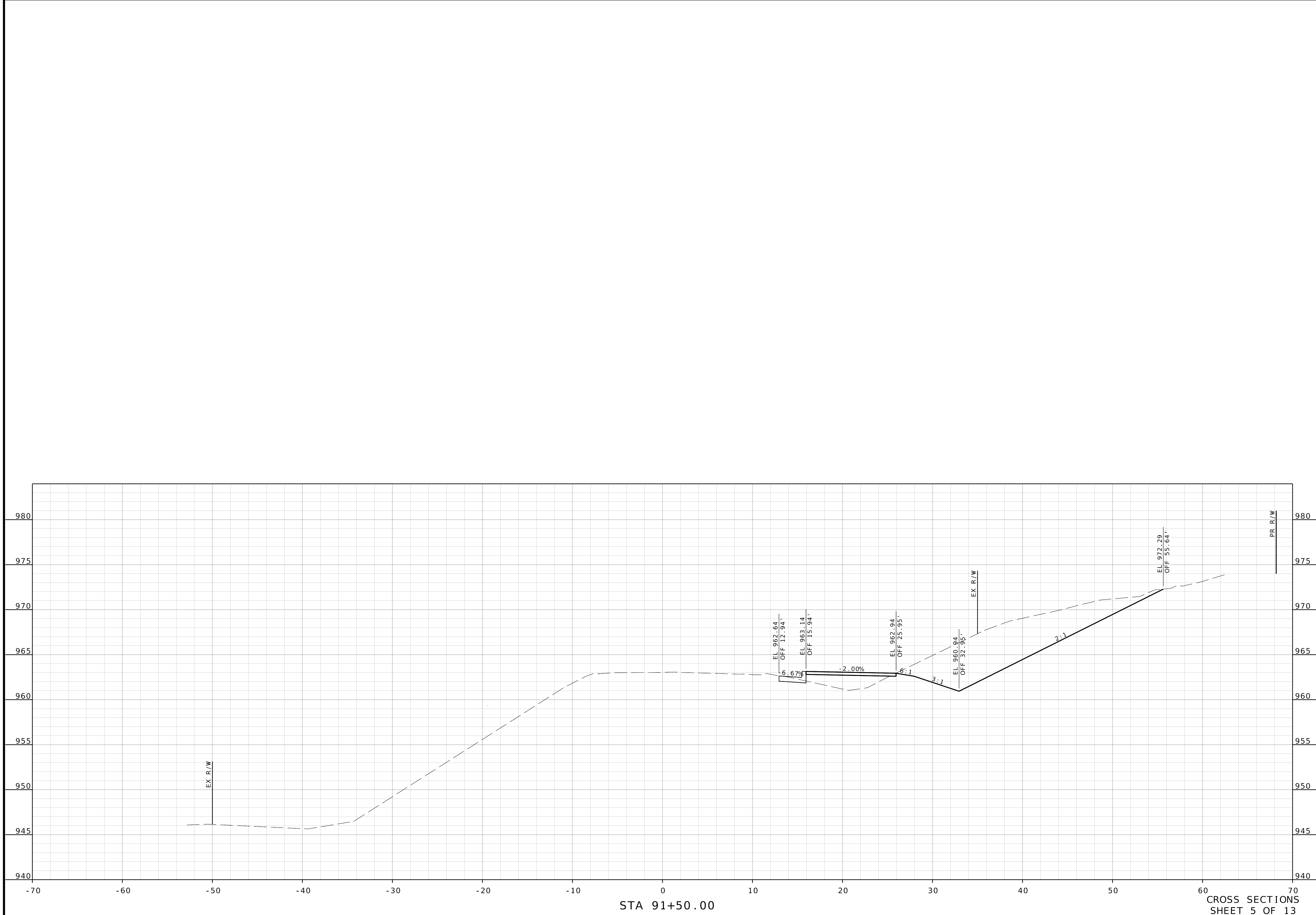
MISSOURI HIGHWAYS AND TRANSPORTATION COMMISSION



105 WEST CAPITOL  
JEFFERSON CITY, MO 65102  
1-888-ASK-MODOT (1-888-275-6636)



**Pickering**  
Pickering Firm, Inc.  
101 South Church Street, Suite 303  
Jonesboro, AR 72401  
Phone: 870.336.0117  
Missouri Certificate of Authority No. 2012006790



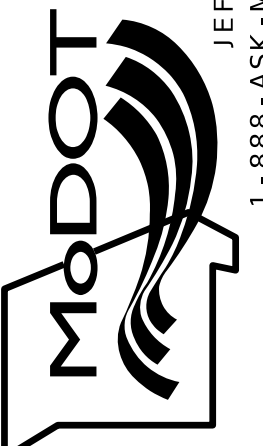
STA 91+50.00

CROSS SECTIONS  
SHEET 5 OF 13

DATE PREPARED 2/1/2026	
ROUTE M	STATE MO
DISTRICT SE	SHEET NO. 5
COUNTY IRON	
JOB NO. JSE0120	
CONTRACT ID.	
PROJECT NO.	
BRIDGE NO.	

DATE	DESCRIPTION

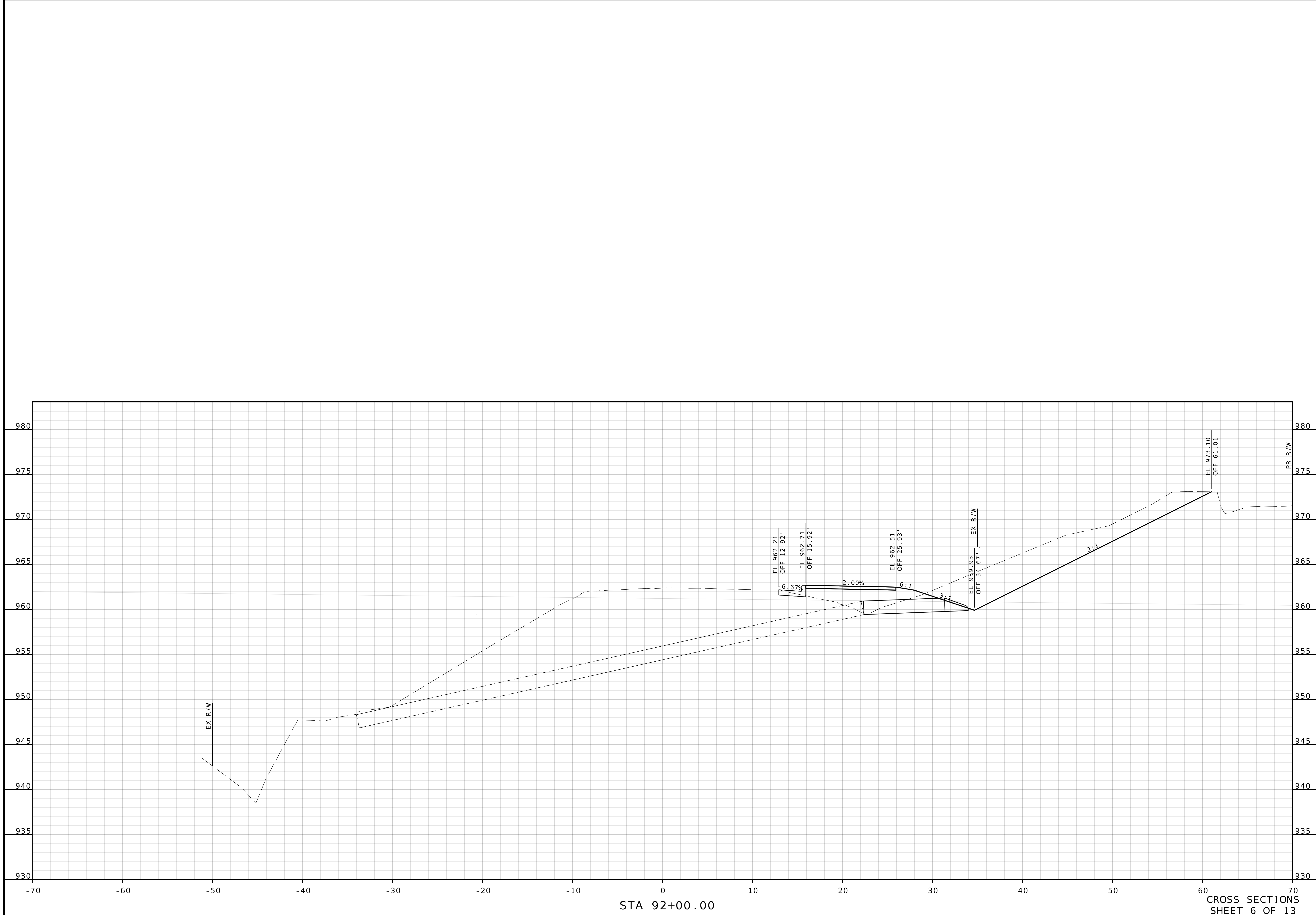
MISSOURI HIGHWAYS AND TRANSPORTATION COMMISSION



105 WEST CAPITOL  
JEFFERSON CITY, MO 65102  
1-888-ASK-MODOT (1-888-275-6636)



**Pickering**  
Pickering Firm, Inc.  
101 South Church Street, Suite 303  
Jonesboro, AR 72401  
Phone: 870.336.0117  
Missouri Certificate of Authority No. 2012006790



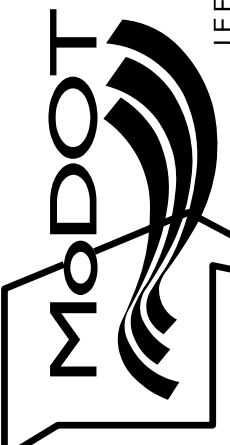
STA 92+00.00

CROSS SECTIONS  
SHEET 6 OF 13

DATE PREPARED 2/1/2026	
ROUTE M	STATE MO
DISTRICT SE	SHEET NO. 6
COUNTY IRON	
JOB NO. JSE0120	
CONTRACT ID.	
PROJECT NO.	
BRIDGE NO.	

DATE	DESCRIPTION

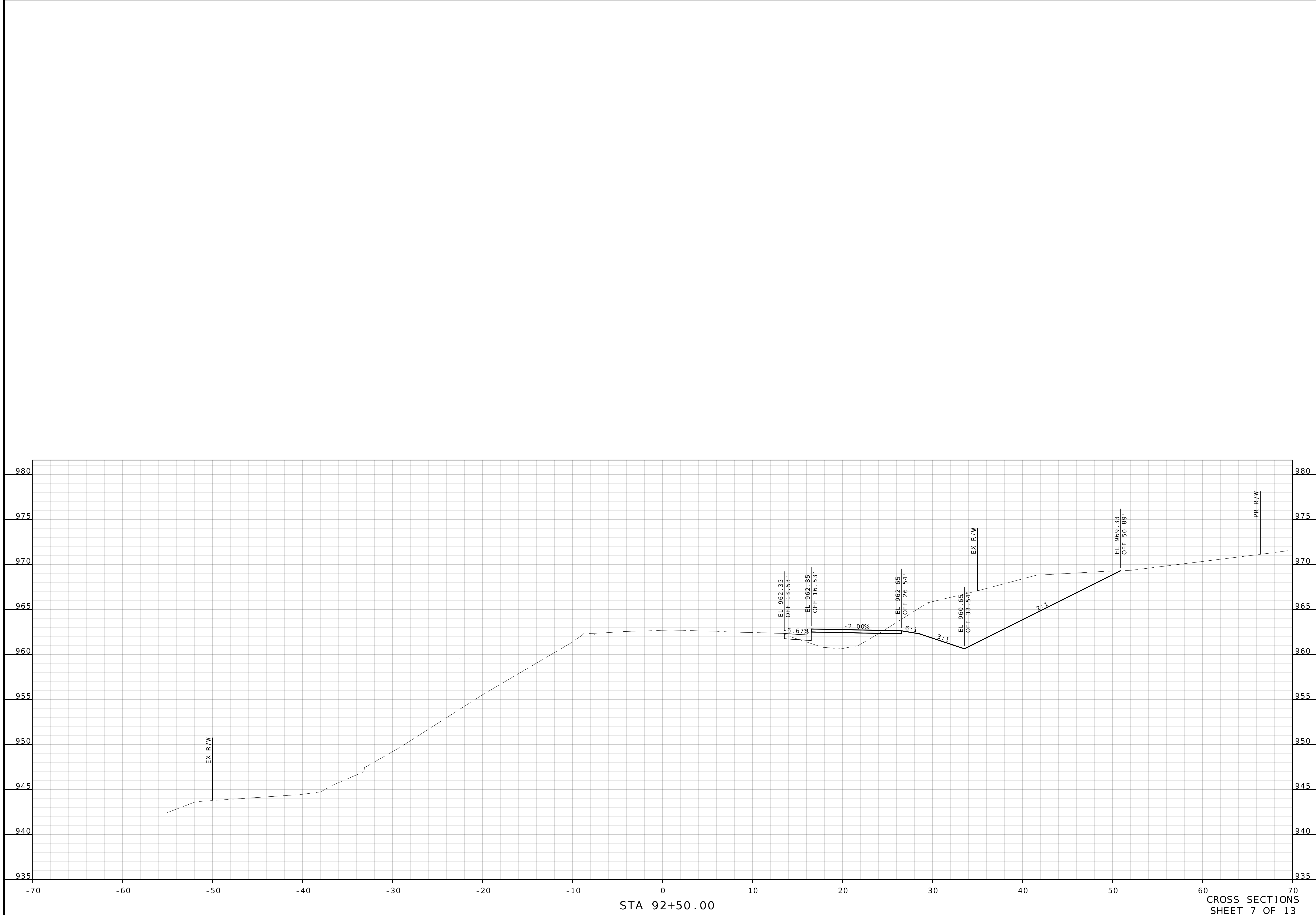
MISSOURI HIGHWAYS AND TRANSPORTATION COMMISSION



105 WEST CAPITOL  
JEFFERSON CITY, MO 65102  
1-888-ASK-MODOT (1-888-275-6636)



**Pickering Firm, Inc.**  
101 South Church Street, Suite 303  
Jonesboro, AR 72401  
Phone: 870.336.0117  
Missouri Certificate of Authority No. 2012006790



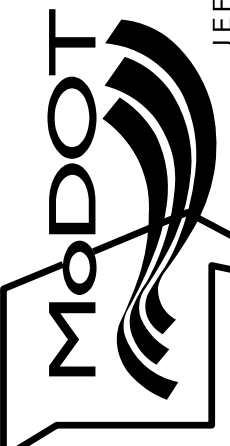
STA 92+50.00

CROSS SECTIONS  
SHEET 7 OF 13

DATE PREPARED 2/1/2026	
ROUTE M	STATE MO
DISTRICT SE	SHEET NO. 7
COUNTY IRON	
JOB NO. JSE0120	
CONTRACT ID.	
PROJECT NO.	
BRIDGE NO.	

DATE	DESCRIPTION

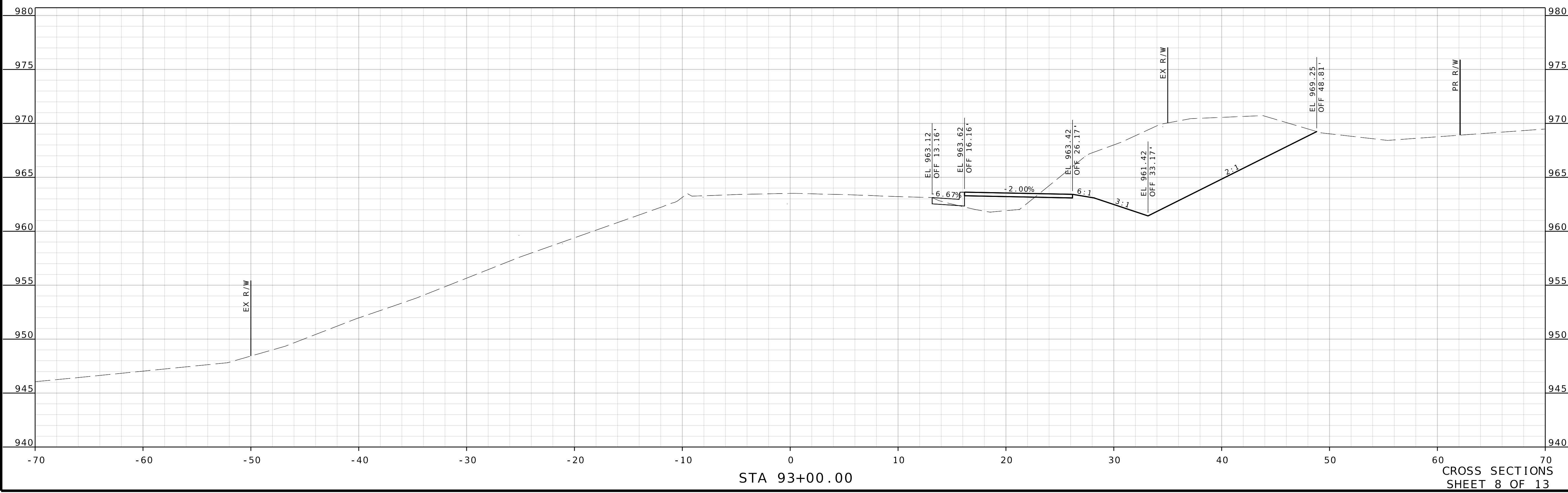
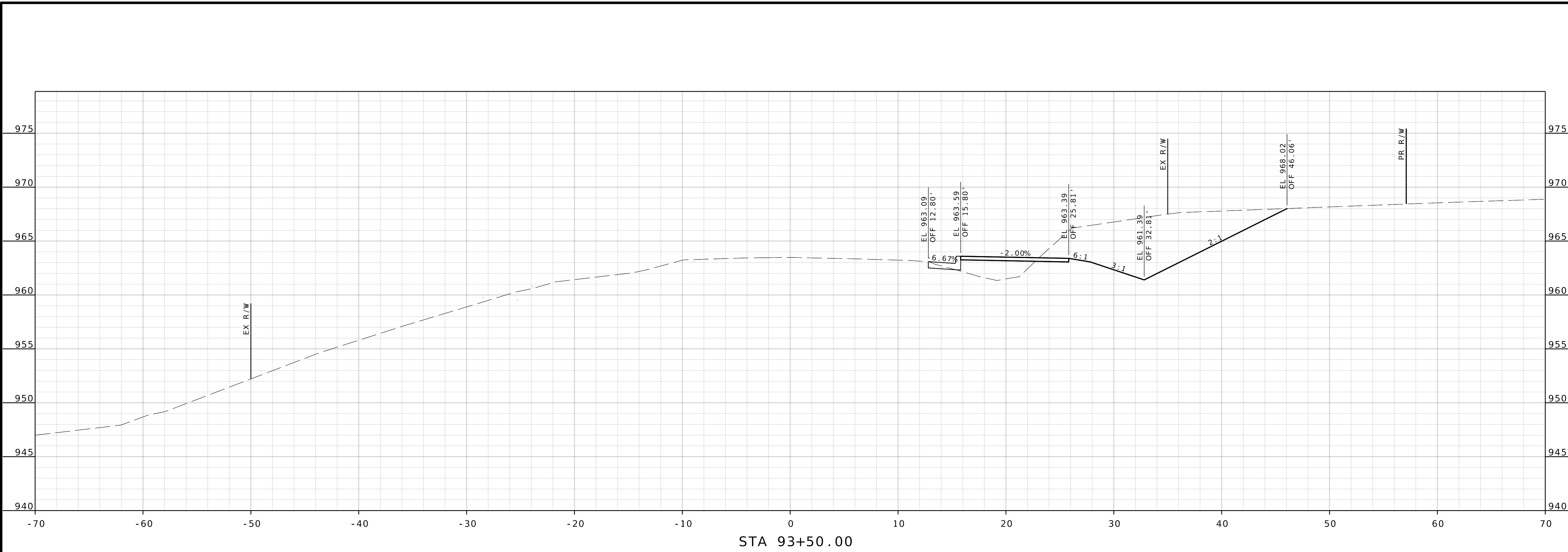
MISSOURI HIGHWAYS AND TRANSPORTATION  
COMMISSION

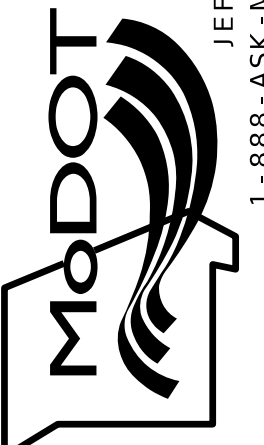
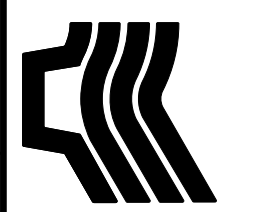


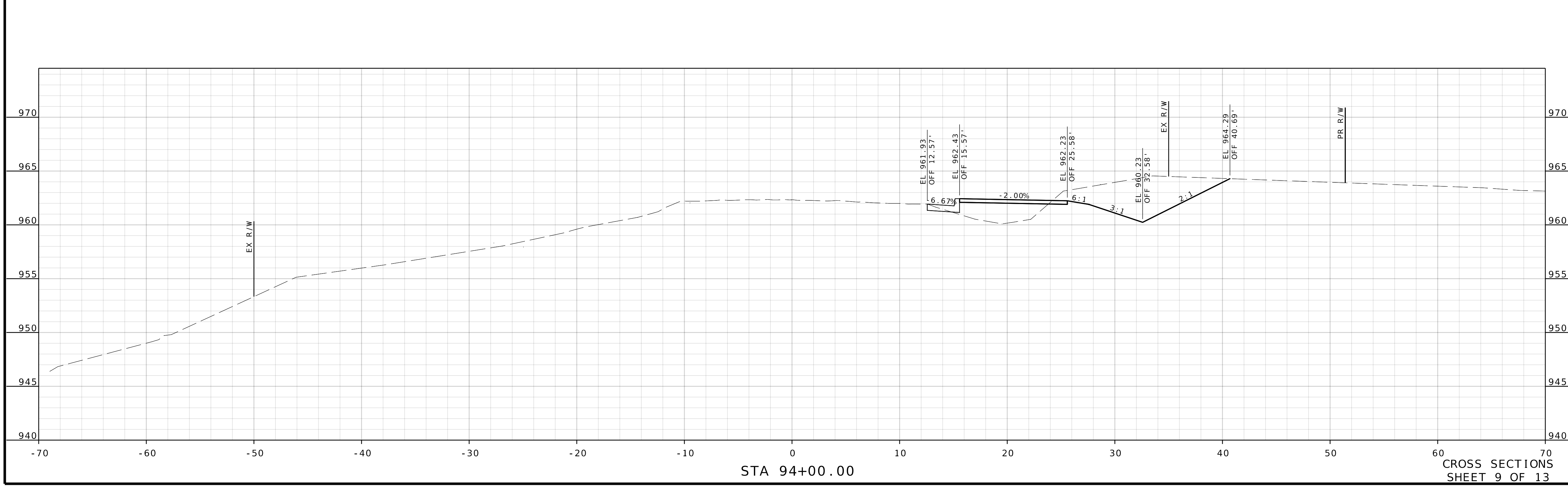
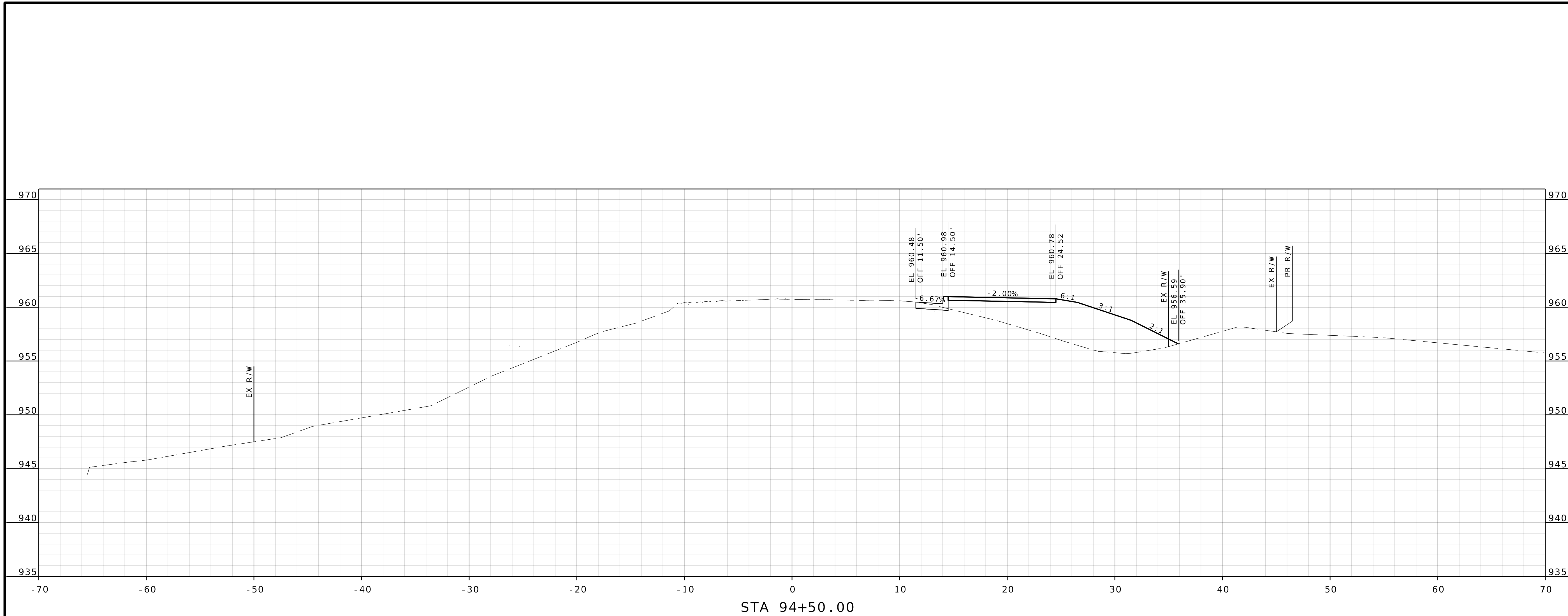
105 WEST CAPITOL  
JEFFERSON CITY, MO 65102  
1-888-ASK-MODOT (1-888-275-6636)

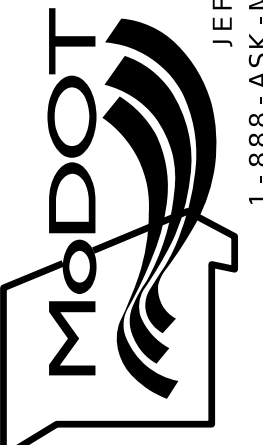



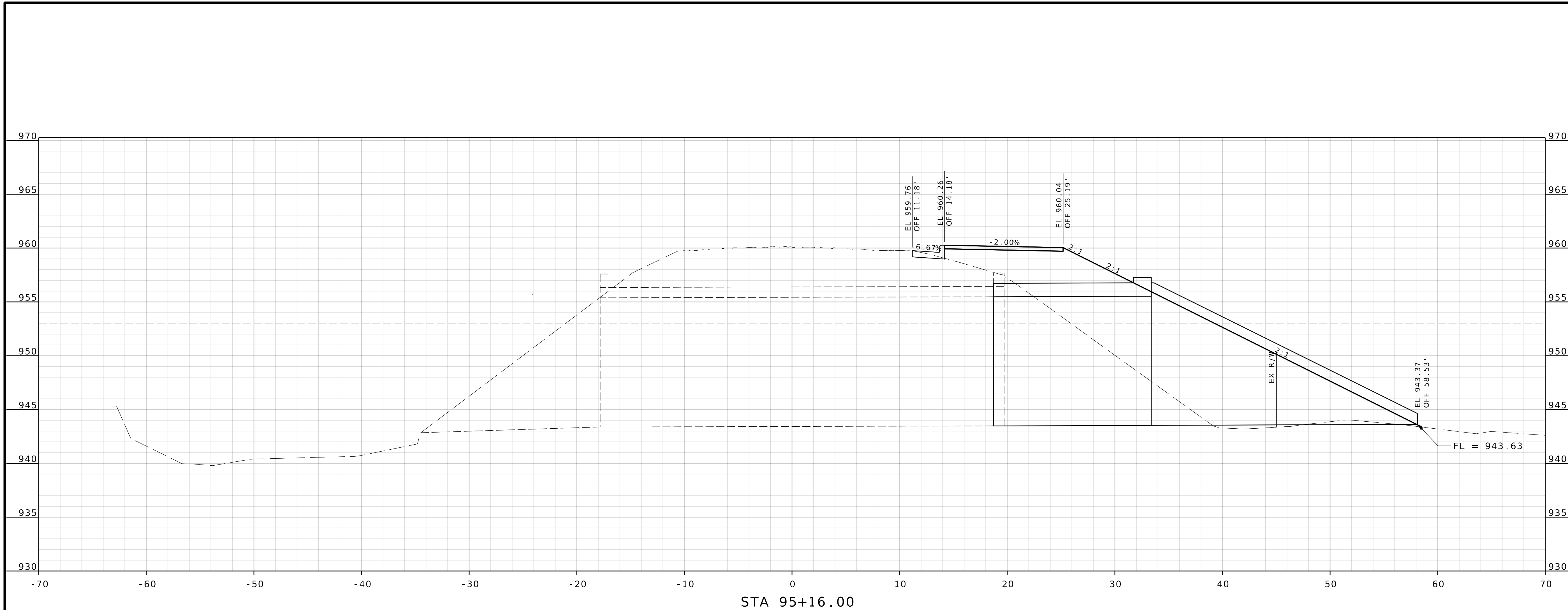
**Pickering**  
Pickering Firm, Inc.  
101 South Church Street, Suite 303  
Jonesboro, AR 72401  
Phone: 870.336.0117  
Missouri Certificate of Authority No. 2012006790



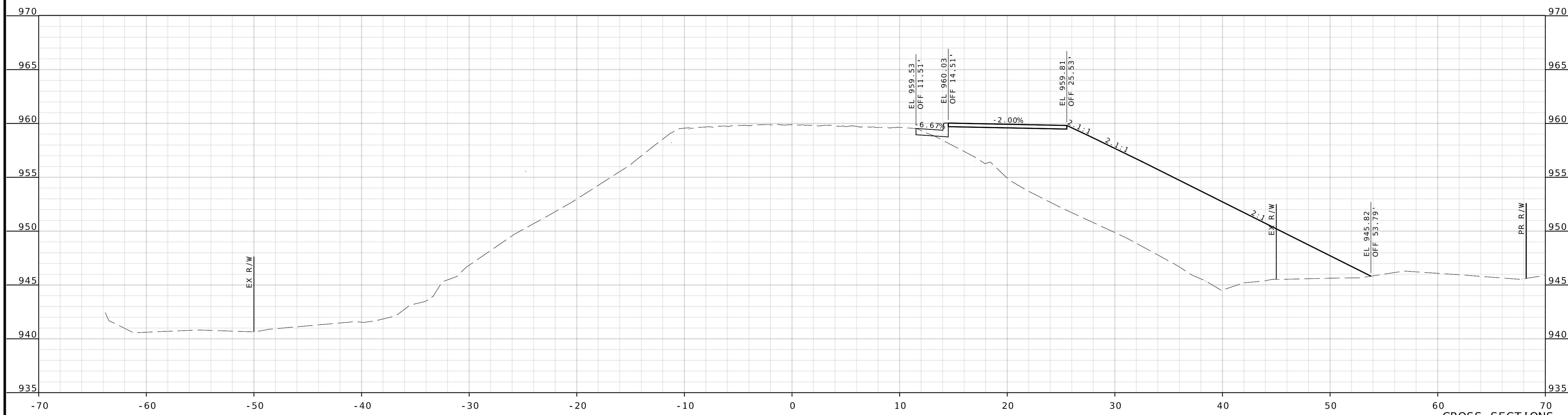
DATE PREPARED 2/1/2026	
ROUTE M	STATE MO
DISTRICT SE	SHEET NO. 8
COUNTY IRON	
JOB NO. JSE0120	
CONTRACT ID.	
PROJECT NO.	
BRIDGE NO.	
DATE	DESCRIPTION
MISSOURI HIGHWAYS AND TRANSPORTATION COMMISSION	
 105 WEST CAPITOL JEFFERSON CITY, MO 65102 1-888-ASK-MODOT (1-888-275-6636)	
 <b>Pickering</b> Firm, Inc. 101 South Church Street, Suite 303 Jonesboro, AR 72401 Phone: 870.336.0117 Missouri Certificate of Authority No. 2012006790	



DATE PREPARED 2/1/2026	
ROUTE M	STATE MO
DISTRICT SE	SHEET NO. 9
COUNTY IRON	
JOB NO. JSE0120	
CONTRACT ID.	
PROJECT NO.	
BRIDGE NO.	
DATE	DESCRIPTION
MISSOURI HIGHWAYS AND TRANSPORTATION COMMISSION	
 105 WEST CAPITOL JEFFERSON CITY, MO 65102 1-888-ASK-MODOT (1-888-275-6636)	
 Pickering Firm, Inc. 101 South Church Street, Suite 303 Jonesboro, AR 72401 Phone: 870.336.0117 Missouri Certificate of Authority No. 2012006790	



STA 95+16.00



STA 95+00.00

DATE PREPARED 2/1/2026	
ROUTE M	STATE MO
DISTRICT SE	SHEET NO. 10
COUNTY IRON	
JOB NO. JSE0120	
CONTRACT ID.	
PROJECT NO.	
BRIDGE NO.	
DESCRIPTION	
DATE	

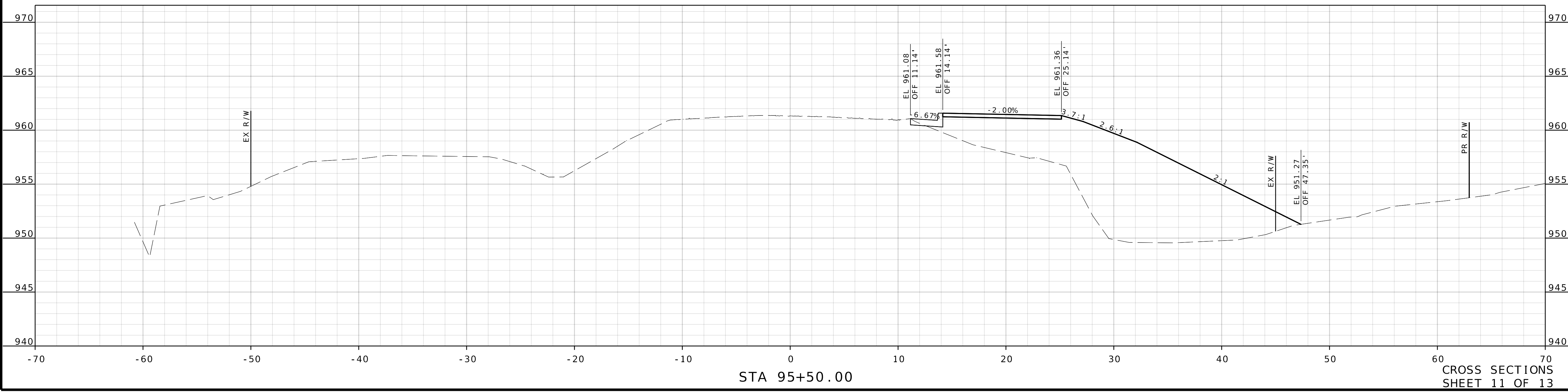
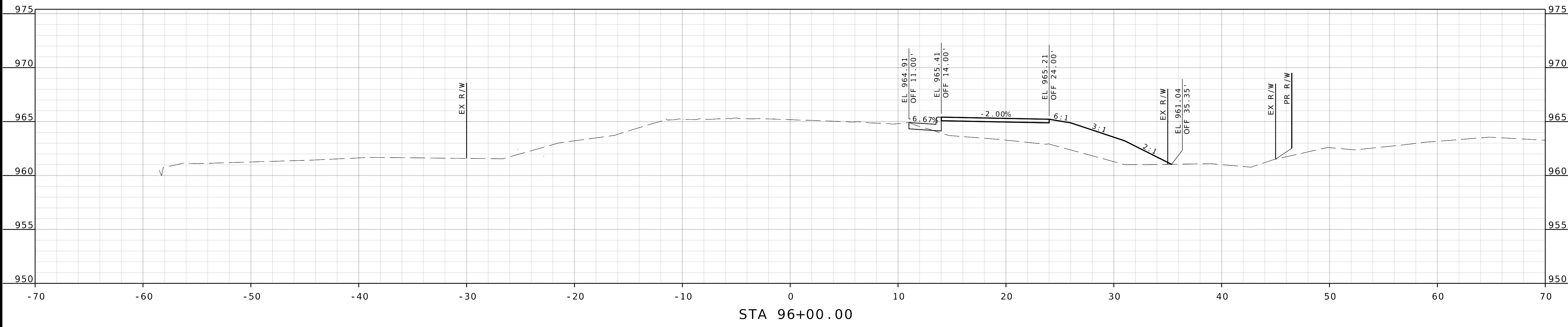
MISSOURI HIGHWAYS AND TRANSPORTATION COMMISSION

**MoDOT**  
105 WEST CAPITOL  
JEFFERSON CITY, MO 65102  
1-888-ASK-MODOT (1-888-275-6636)

**Pickering**  
Pickering Firm, Inc.  
101 South Church Street, Suite 303  
Jonesboro, AR 72401  
Phone: 870.336.0117  
Missouri Certificate of Authority No. 2012006790

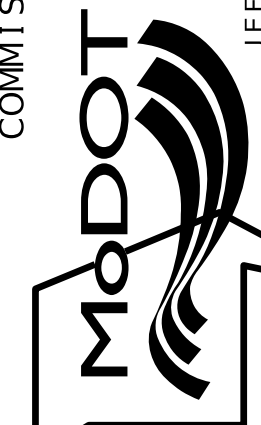
CROSS SECTIONS  
SHEET 10 OF 13

DATE PREPARED	
2/1/2026	
ROUTE	STATE
M	MO
DISTRICT	SHEET NO.
SE	11
COUNTY	
IRON	
JOB NO.	
JSE0120	
CONTRACT ID.	
PROJECT NO.	
BRIDGE NO.	

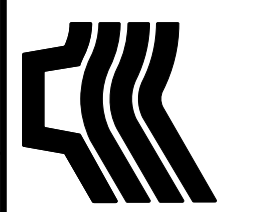


DESCRIPTION	DATE

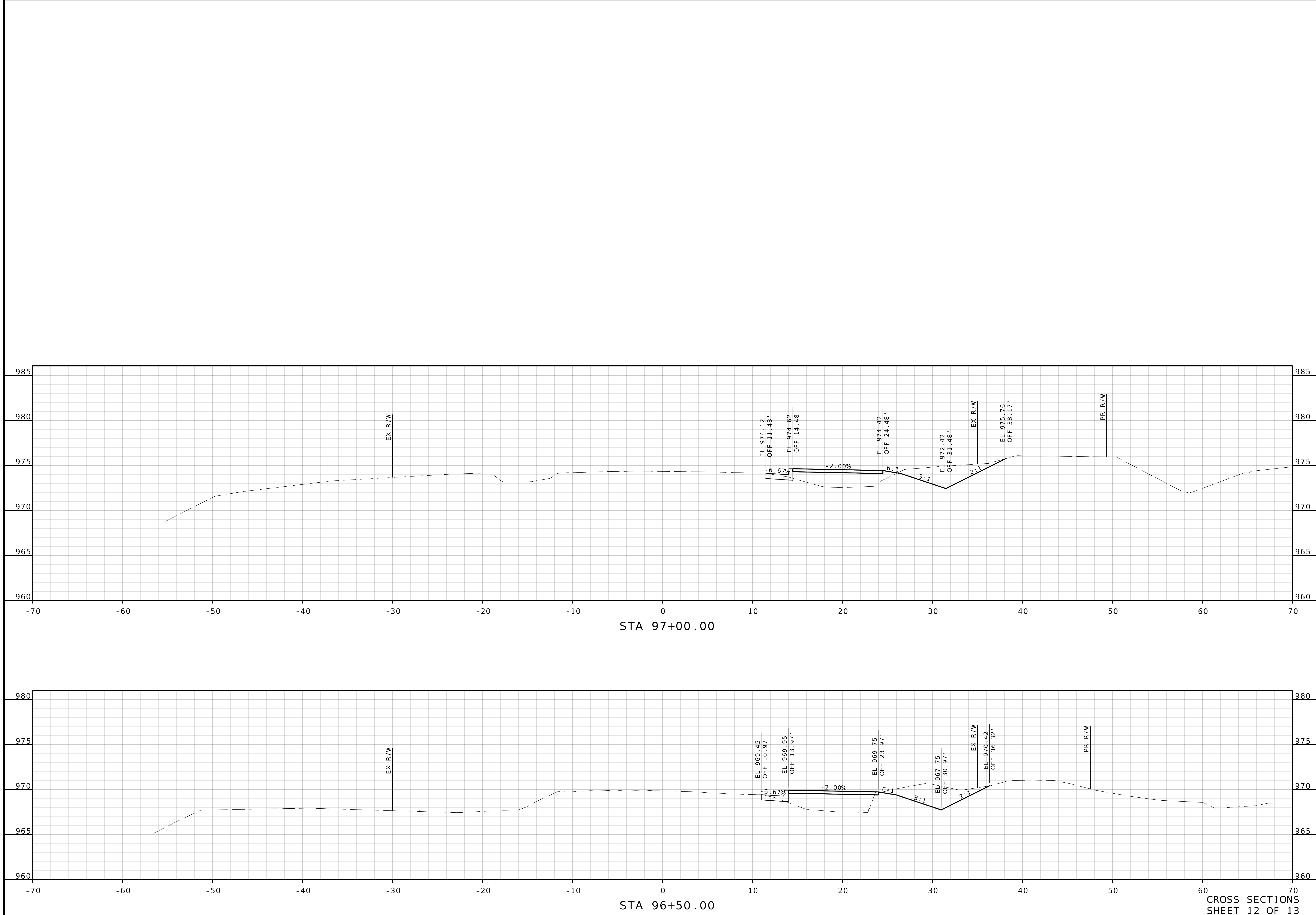
MISSOURI HIGHWAYS AND TRANSPORTATION COMMISSION

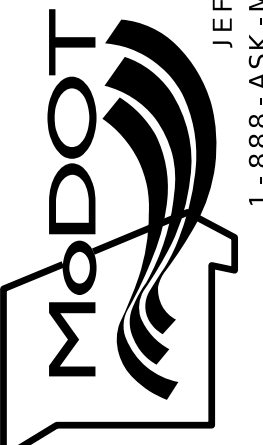



105 WEST CAPITOL  
JEFFERSON CITY, MO 65102  
1-888-ASK-MODOT (1-888-275-6636)

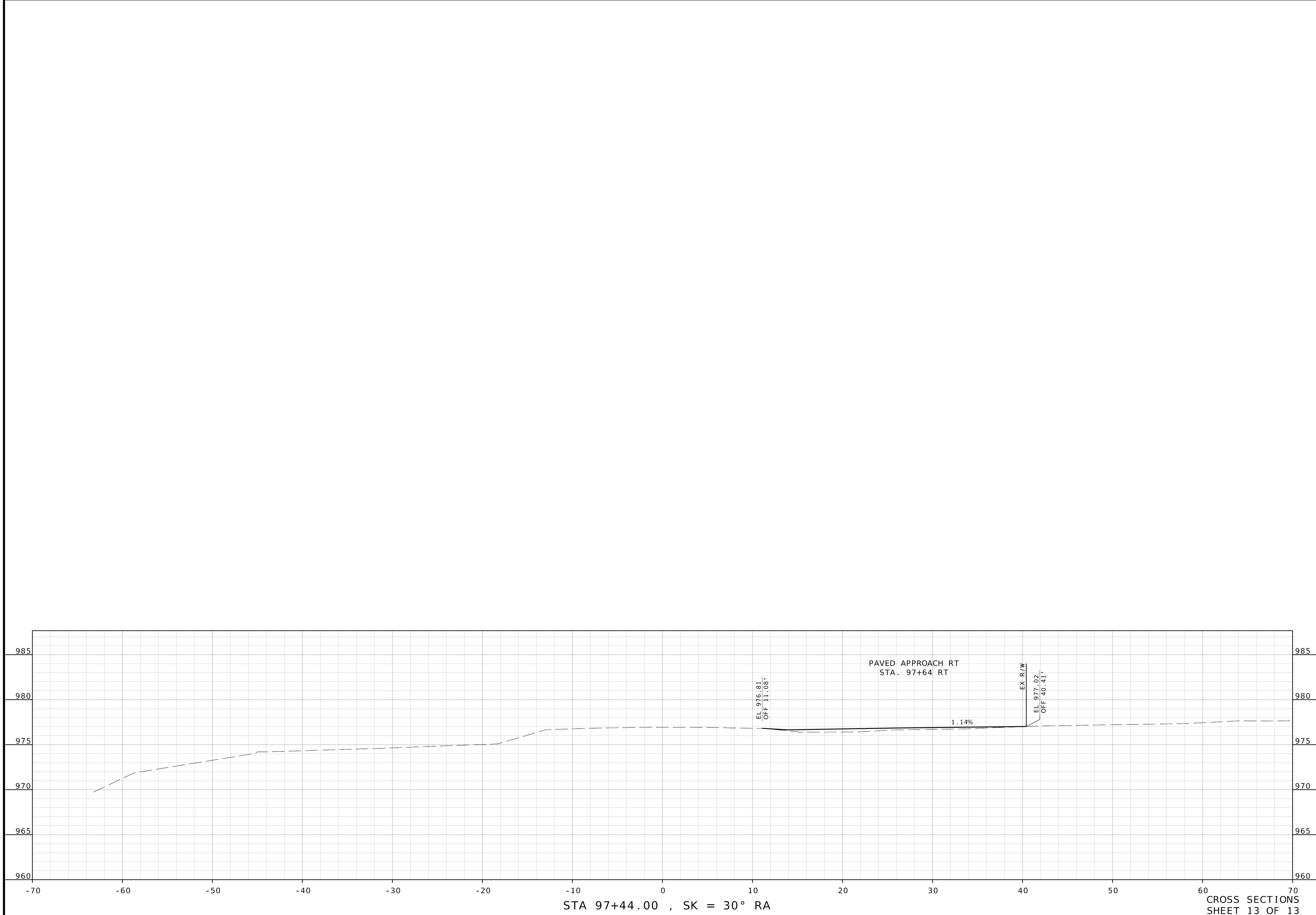


**Pickering**  
Pickering Firm, Inc.  
101 South Church Street, Suite 303  
Jonesboro, AR 72401  
Phone: 870.336.0117  
Missouri Certificate of Authority No. 2012006790



DATE PREPARED 2/1/2026	
ROUTE M	STATE MO
DISTRICT SE	SHEET NO. 12
COUNTY IRON	
JOB NO. JSE0120	
CONTRACT ID.	
PROJECT NO.	
BRIDGE NO.	
DESCRIPTION	
DATE	
MISSOURI HIGHWAYS AND TRANSPORTATION COMMISSION	
 105 WEST CAPITOL JEFFERSON CITY, MO 65102 1-888-ASK-MODOT (1-888-275-6636)	
 Pickering Firm, Inc. 101 South Church Street, Suite 303 Jonesboro, AR 72401 Phone: 870.336.0117 Missouri Certificate of Authority No. 2012006790	

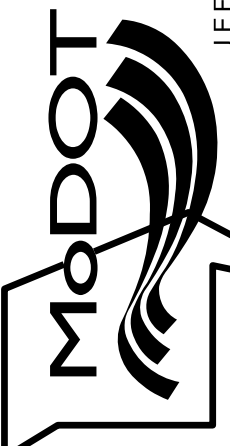
CROSS SECTIONS  
SHEET 12 OF 13



DATE PREPARED 2/1/2026	
ROUTE M	STATE MO
DISTRICT SE	SHEET NO. 13
COUNTY IRON	
JOB NO. JSE0120	
CONTRACT ID.	
PROJECT NO.	
BRIDGE NO.	

DATE	DESCRIPTION

MISSOURI HIGHWAYS AND TRANSPORTATION  
COMMISSION



105 WEST CAPITOL  
JEFFERSON CITY, MO 65102  
1-888-ASK-MODOT (1-888-275-6636)



**Pickering**  
Firm, Inc.  
101 South Church Street, Suite 303  
Jonesboro, AR 72401  
Phone: 870.336.0117  
Missouri Certificate of Authority No. 2012006790