



Southeast District

800 BetterBridges



Statewide SAS Program

The Safe & Sound program is committed to replacing or rehabilitating more than 800 of MoDOT's most worn-out bridges in five years. To do this, MoDOT has dedicated about one-third of its annual existing federal bridge replacement funds to finance the program without a tax increase or additional funding. Payments are in the neighborhood of \$50 million per year.

The Safe & Sound program began in September 2008 with quick-start bridges and progressed to design-build bridge projects. Unlike the quick-start bridge projects, which included deck replacements, the design-build bridges have been targeted for a total replacement. There are more than 550 bridges statewide included in the design-build contract.

In May 2009, the Missouri Highways and Transportation Commission awarded the design-build contract to KTU Constructors.

Currently, 745 bridges have been completed, and the program is on track to be completed this fall—over one year ahead of schedule.

About KTU Constructors

KTU's proposal, to build all 554 new bridges by the end of 2013 at a cost of \$487 million, was deemed by the Commission to be the 'best-value.'

The KTU Constructors team is led by Kiewit Western Company, Traylor Bros., Inc., United Contractors, Inc., HNTB Corporation and The LPA Group, Inc. They will be responsible for design, construction, project management and public outreach for all 554 bridge projects, and will be joined by a host of Missouri-based subcontractors and material suppliers.

Besides offering the most economical project delivery, speed of construction and flexibility in construction schedules to respond to local issues were also critical components when MoDOT chose a contractor to complete the design-build bridges.

Design-Build Bridges and the SE District

There are 116 Safe & Sound bridges in the Southeast District; most of these bridges are part of the design-build portion of the program.

When scheduling the design-build bridgework, MoDOT and the KTU Constructors worked together to create a schedule that did not conflict with local community annual events, the contractors' plan or MoDOT's STIP projects.

In the end, the SE District and KTU Constructors developed a plan to have the Southeast bridges completed in two to three years.

Similar to the quick-start bridge projects, the design-build projects will also involve road closures when possible. For bridges on low-volume routes, the contract requires the average closure be 45 days. However, on divided highways and in high-traffic areas, work will be staged to reduce the impact on traffic.

Road closures during many of the Safe & Sound projects are part of being a good steward of taxpayer money. If MoDOT constructed temporary bridges to keep the roads open, it would add approximately \$250,000 to the cost of each project. By closing these roads, MoDOT is able to use the money saved to make other needed improvements.

For More Information

District Construction and Materials Engineer Andy Meyer
573.472.5296
Andrew.Meyer@modot.mo.gov

Assistant Resident Engineer Tammy Hefner
573.840.9781
Tammy.Hefner@modot.mo.gov

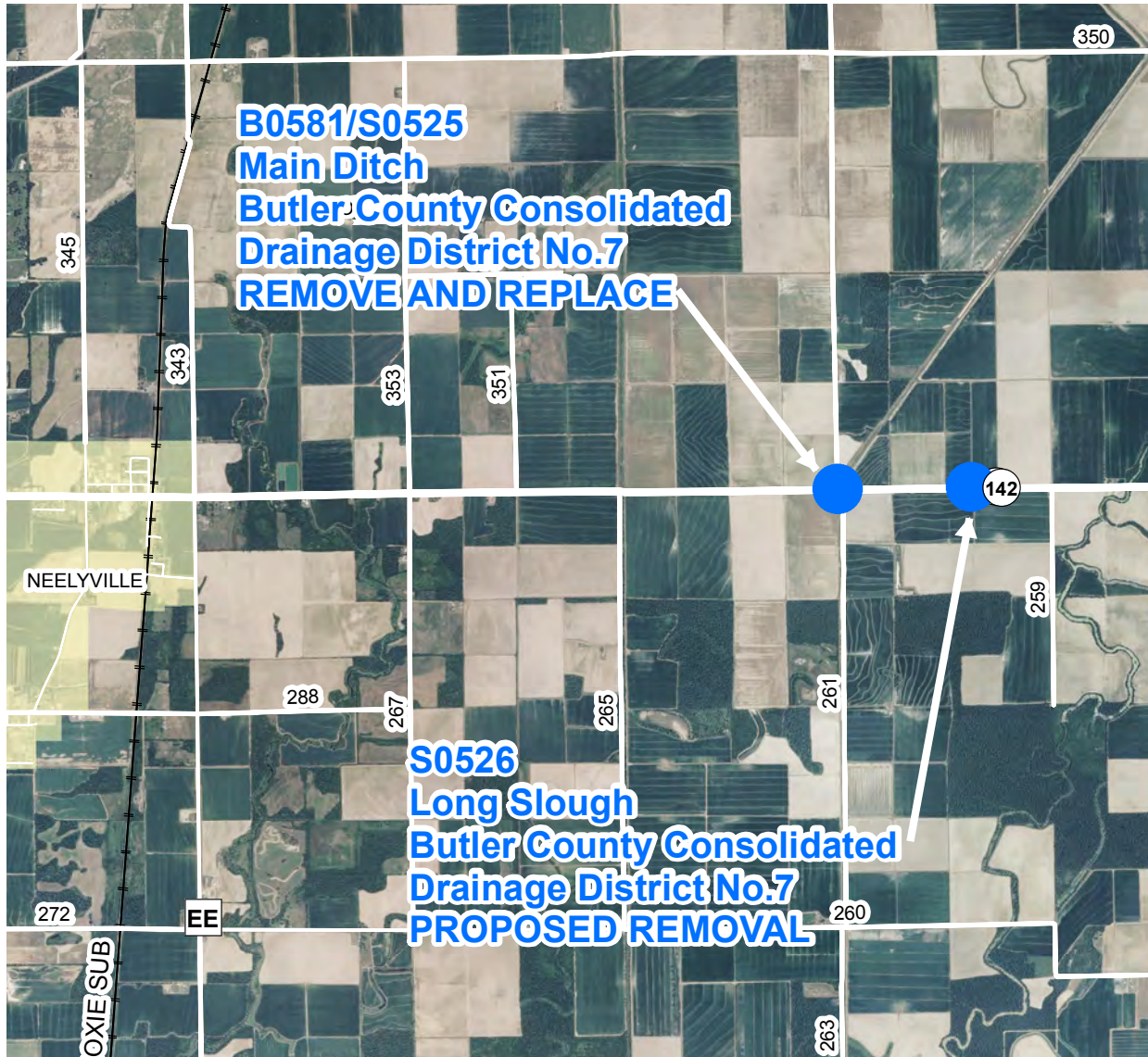




Southeast District

800

BetterBridges



Additional SAS Bridges in Butler County

Improvements through Safe & Sound were considered to be complete in Butler County after the programmed projects were completed on Routes TT, OO and AA. However, savings were identified and to make the best use of taxpayers'

dollars, additional projects were prioritized.

One of the projects added to the statewide Safe & Sound program will replace the Route 142 bridge over Main Ditch in Butler County.

In addition, the Safe & Sound

team is currently investigating the possibility of replacing the Route 142 bridge over Long Slough.

The project could be completed in conjunction with the Main Ditch bridge replacement, resulting in one road closure to address two bridges.

B0581: Route 142 Main Ditch Closure: July - Aug 2012

Proposed: Route 142 Long Slough Schedule: Undetermined