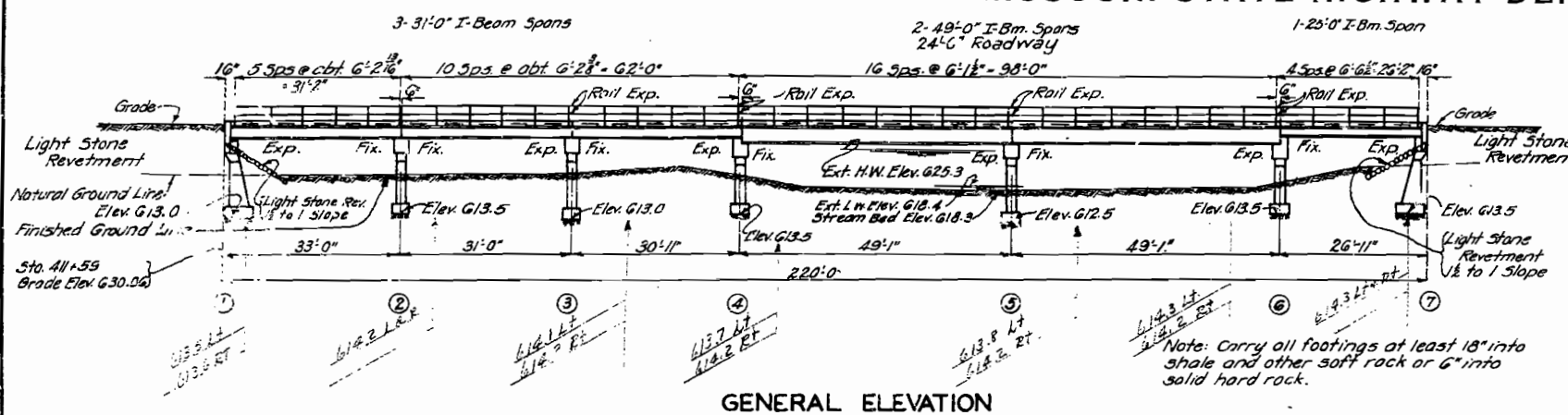
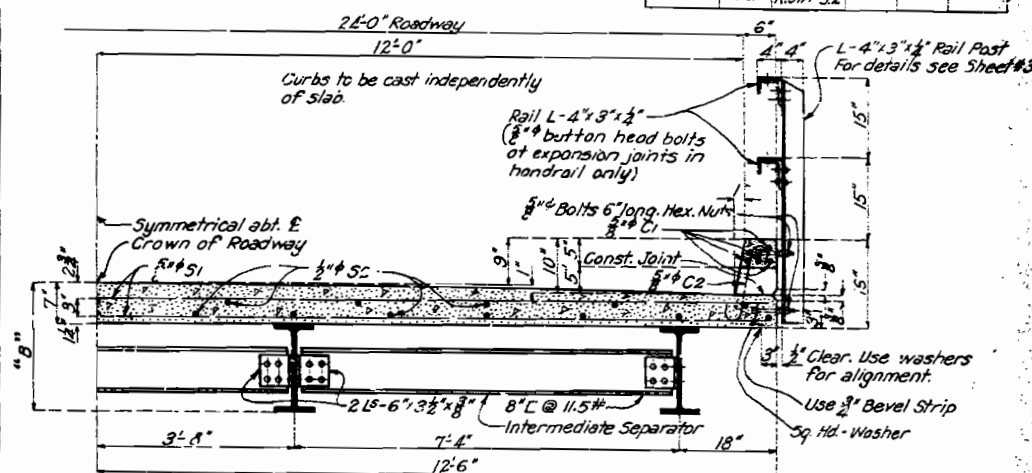


# MISSOURI STATE HIGHWAY DEPARTMENT

FED. ROAD DIST. NO.	STATE	FED. AID PROJ. NO.	FISCAL YEAR	SHEET NO.	TOTAL SHEETS
5	MO.	R.51A-S.2			



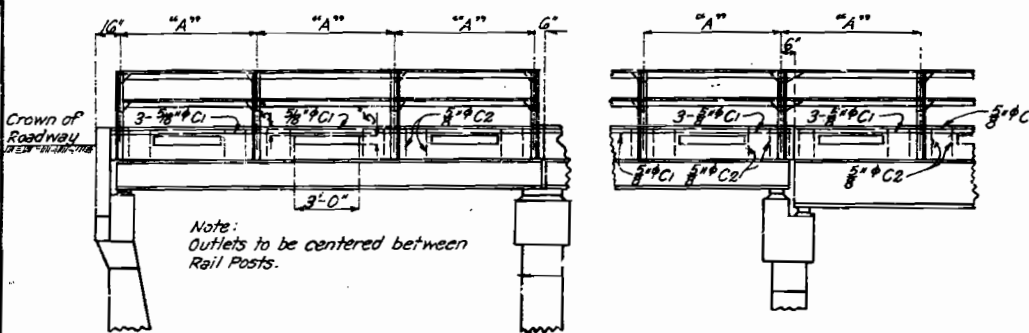
SPAN "S"	"B"
15'-0"	20'8"
17'-0"	21'
19'-0"	22'
21'-0"	23'
23'-0"	23'8"
25'-0"	24'
27'-0"	24'8"
29'-0"	25'
31'-0"	25'8"
33'-0"	26'
35'-0"	26'8"
37'-0"	27'
39'-0"	27'8"
41'-0"	28'
43'-0"	28'8"
45'-0"	29'
47'-0"	29'8"
49'-0"	30'



Note: Carry all footings at least 18" into shale and other soft rock or 6" into solid hard rock.

Note: Top of channel separators at ends of each I-Beam Span to be flush with bottom of floor slab as shown in section thru end bent at E.

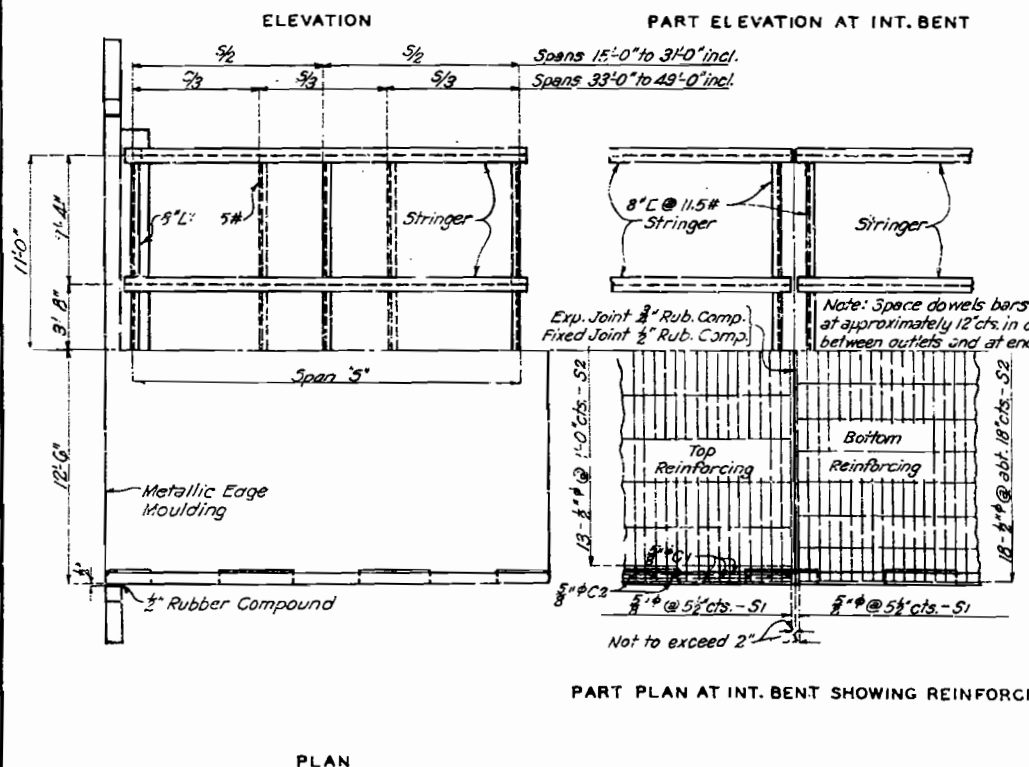
Note: Depth of outside stringers will in some cases be a fraction of an inch less than that of inside stringers and in order to keep bottom of slab horizontal it will be necessary to haunch slab down to top of outside stringers.



SPAN "S"	NO. PANELS	"A" DIMENSIONS			
		SINGLE SPAN	1ST END SPAN	ALL INT. SPANS	LAST END SPAN
15'-0"	3	5'-5 1/2" abt.	5'-0 1/2" abt.	5'-0"	5'-4 1/2" abt.
17'-0"	3	6'-1 1/2" abt.	5'-8" abt.	5'-8"	6'-0 1/2" abt.
19'-0"	3	6'-3 1/2" abt.	6'-4 1/2" abt.	6'-4"	6'-8 1/2" abt.
21'-0"	4	5'-7" abt.	5'-3 1/2" abt.	5'-3"	5'-5 1/2" abt.
23'-0"	4	6'-1" abt.	5'-9 1/2" abt.	5'-9"	6'-0 1/2" abt.
25'-0"	4	6'-5" abt.	5'-5" abt.	5'-5"	6'-6 1/2" abt.
27'-0"	5	5'-8" abt.	5'-4 1/2" abt.	5'-4 1/2"	5'-7 1/2" abt.
29'-0"	5	6'-0 1/2" abt.	5'-10" abt.	5'-9 1/2" abt.	6'-0 1/2" abt.
31'-0"	5	6'-2 1/2" abt.	6'-2 1/2" abt.	6'-2 1/2"	6'-4 1/2" abt.
33'-0"	6	5'-8 1/2" abt.	5'-6 1/2" abt.	5'-6"	5'-8 1/2" abt.
35'-0"	6	6'-0" abt.	5'-10 1/2" abt.	5'-10"	6'-0 1/2" abt.
37'-0"	6	6'-2 1/2" abt.	6'-2 1/2" abt.	6'-2 1/2"	6'-4 1/2" abt.
39'-0"	7	5'-7 1/2" abt.	5'-6 1/2" abt.	5'-6 1/2"	5'-8 1/2" abt.
41'-0"	7	6'-0" abt.	5'-10 1/2" abt.	5'-10 1/2"	6'-0 1/2" abt.
43'-0"	7	6'-2" abt.	6'-1 1/2" abt.	6'-1 1/2"	6'-3 1/2" abt.
45'-0"	8	5'-9 1/2" abt.	5'-7 1/2" abt.	5'-7 1/2"	5'-9 1/2" abt.
47'-0"	8	6'-0 1/2" abt.	5'-10 1/2" abt.	5'-10 1/2"	6'-0 1/2" abt.
49'-0"	8	6'-3 1/2" abt.	6'-1 1/2" abt.	6'-1 1/2"	6'-3 1/2" abt.

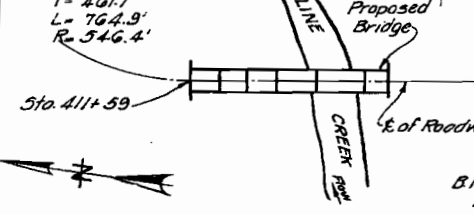
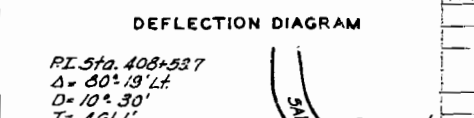
SPAN "S"	PER PLANS		PERMISSIBLE SUBSTITUTIONS			
	CARNegie BEAMS		STANDARD I-BEAMS		BETHLEHEM BEAMS	
	Inside	Outside	Inside	Outside	Inside	Outside
15'-0"	14" @ 30"	14" @ 30"	12" @ 40.8"	12" @ 39"	14" @ 30"	14" @ 30"
17'-0"	14" @ 33"	14" @ 33"	15" @ 42.9"	15" @ 42.9"	14" @ 33"	14" @ 33"
19'-0"	15" @ 37"	15" @ 37"	15" @ 42.9"	15" @ 42.9"	16" @ 37"	16" @ 37"
21'-0"	16" @ 40"	16" @ 40"	15" @ 50"	15" @ 45"	16" @ 40"	16" @ 37"
23'-0"	16" @ 45"	16" @ 40"	18" @ 54.7"	18" @ 54.7"	16" @ 45"	16" @ 40"
25'-0"	18" @ 57"	18" @ 47"	18" @ 70"	18" @ 54.7"	18" @ 57"	18" @ 47"
27'-0"	18" @ 52"	18" @ 47"	18" @ 60"	18" @ 54.7"	18" @ 52"	18" @ 47"
29'-0"	20" @ 55"	20" @ 55"	20" @ 65.4"	20" @ 65.4"	20" @ 55"	20" @ 55"
31'-0"	21" @ 67"	21" @ 58"	20" @ 81.1"	20" @ 65.4"	22" @ 67"	22" @ 58"
33'-0"	21" @ 62"	21" @ 58"	20" @ 75"	20" @ 70"	22" @ 62"	22" @ 58"
35'-0"	21" @ 67"	21" @ 62"	20" @ 81.1"	20" @ 75"	22" @ 67"	22" @ 62"
37'-0"	24" @ 70"	24" @ 70"	24" @ 79.9"	24" @ 79.9"	24" @ 70"	24" @ 70"
39'-0"	24" @ 74"	24" @ 70"	24" @ 79.9"	24" @ 79.9"	24" @ 74"	24" @ 70"
41'-0"	24" @ 81"	24" @ 74"	24" @ 85"	24" @ 79.9"	24" @ 81"	24" @ 74"
43'-0"	24" @ 85"	24" @ 81"	24" @ 100"	24" @ 90"	26" @ 85"	26" @ 81"
45'-0"	27" @ 85"	27" @ 85"	24" @ 103.9"	24" @ 100"	26" @ 85"	26" @ 85"
47'-0"	27" @ 91"	27" @ 85"	24" @ 103.9"	24" @ 105.9"	28" @ 91"	28" @ 85"
49'-0"	27" @ 112"	27" @ 91"	28" @ 112"	28" @ 91"	28" @ 112"	28" @ 91"

GENERAL NOTES:  
 Loading: One 10 Ton Truck, 80% of weight on rear axle, 30% impact, 14'-0" wheel base, 6'-0" gage, 10" tire.  
 Exposed edges to be beveled 3/8" where no other bevel is noted. Concrete in slabs and curbs to be 1-2-3 1/2 mix, Class "X". All other concrete to be 1-2-4 mix, Class "B".  
 Bridge excavation in accordance with Section I of Standard Specifications issued April 1, 1930, except that quantities paid for will be computed from Ext. L.W. Elev. 618.4 where existing ground line is below this elevation.



SPAN "S"	"D"
15'-0"	1/4"
17'-0"	3/8"
19'-0"	1/2"
21'-0"	5/8"
23'-0"	3/4"
25'-0"	7/8"
27'-0"	1"
29'-0"	1 1/8"
31'-0"	1 1/4"
33'-0"	1 3/8"
35'-0"	1 1/2"
37'-0"	1 3/4"
39'-0"	1 7/8"
41'-0"	2"
43'-0"	2 1/8"
45'-0"	2 1/4"
47'-0"	2 3/8"
49'-0"	2 1/2"

Note: Floor slab to be brought to grade and dead load deflection taken care of by increasing slab thickness. Depth of slab at outside face of curb to be kept uniform and bottom surface of slab warped between curb and outside beam to obtain required thickness at beam. Payment will be allowed for additional concrete required for thickening slab. This additional concrete is included in "Estimated Quantities."



ITEM	SUPERSTR.			TOTAL
	SUPERSTR.	SUBSTR.	TOTAL	
Bridge Excavation Class 1	Cu. Yds.		27	27
Bridge Excavation Class 2	Cu. Yds.		116	116
Concrete 1-2-4 mix "B"	Cu. Yds.		64.2	64.2
Concrete 1-2-3 1/2 mix "X"	Cu. Yds.		124.4	124.4
Fabricated Structural Steel	Lbs.	83400		83400
Reinforcing Steel	Lbs.	31930	10910	42840

Note: Bridge excavation above Elev. 620.0 will be paid for as Class 1 Bridge Excavation. Bridge excavation below Elev. 620.0 will be paid for as Class 2 Bridge Excavation.

I-Beams with fastenings, spacers, handrail, handrail posts with fastenings, will be paid for as structural steel. Cast of metallic edge moulding will be included in unit bid price for concrete. Rivets 3/8", holes 1/2", except in handrail where rivets shall be 5/8" holes 1/2". Field connections riveted except as noted. See Special Provisions in regard to permissible beam substitutions and basis of payment.

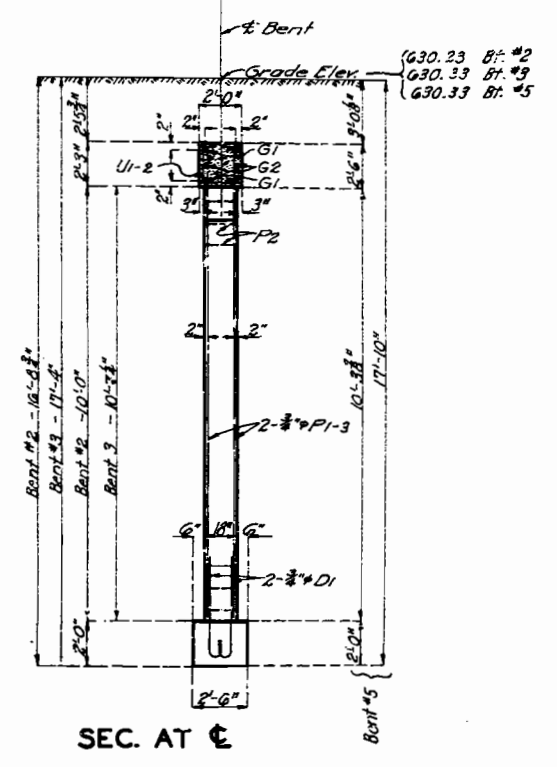
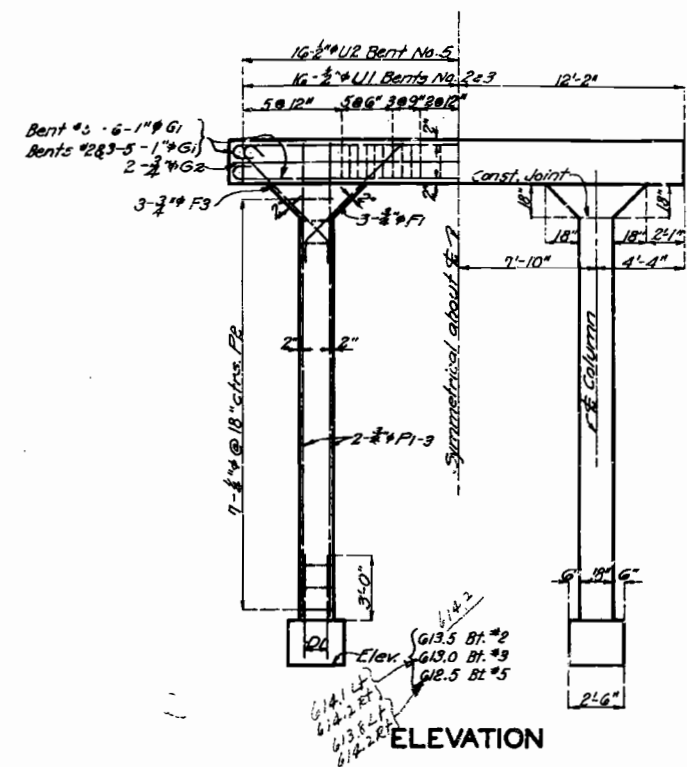
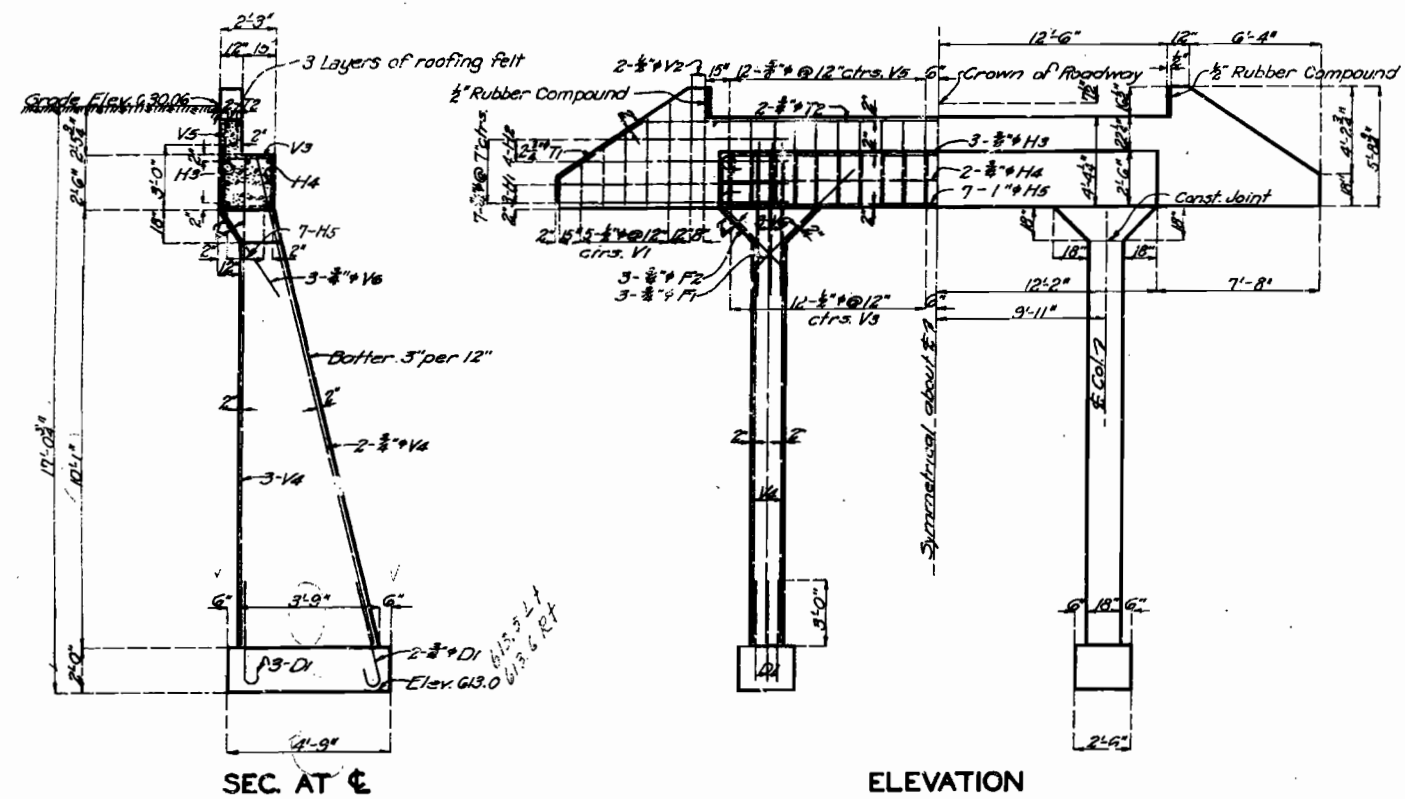
Detail shop drawings shall be submitted to the State Highway Department in duplicate and shall be approved before steel is fabricated. Where rubber compound is specified on plans for use in partition and expansion joints, the pre-moulded joint shall be securely stitched to one face of concrete with copper wire. Paint: Shop. none: Field, contact surfaces with bolted field connections one coat red lead and surfaces inaccessible after erection three coats of red lead. No other paint to be applied by contractor. All paint required will be furnished by the Missouri State Highway Department.

**BRIDGE OVER SALINE CREEK**  
 STATE ROAD FROM PERRYVILLE TO SILVER LAKE  
 ABOUT 8 MILES S.W. OF PERRYVILLE FINISHED  
 PROJECT NO. R.51A-S.2 STA. 411+59  
**PERRY COUNTY**  
 SUBMITTED BY: N.R. Day DATE: 1/26/33.  
 APPROVED BY: T.H. ... DATE: 1/26/33.  
 FINISHED

Designed Nov. 1929 By F.W.H.  
 Drawn Mar. 1930 By R.J.G.  
 Traced Dec. 1931 By R.J.G.  
 Checked Dec. 1931 By R.J.G.  
 Assembled Jan. 1933 By I.B.-G.W.  
 Checked Jan. 1933 By R.H.S.

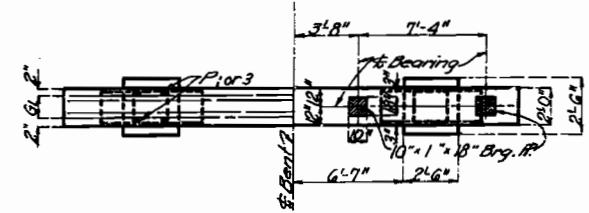
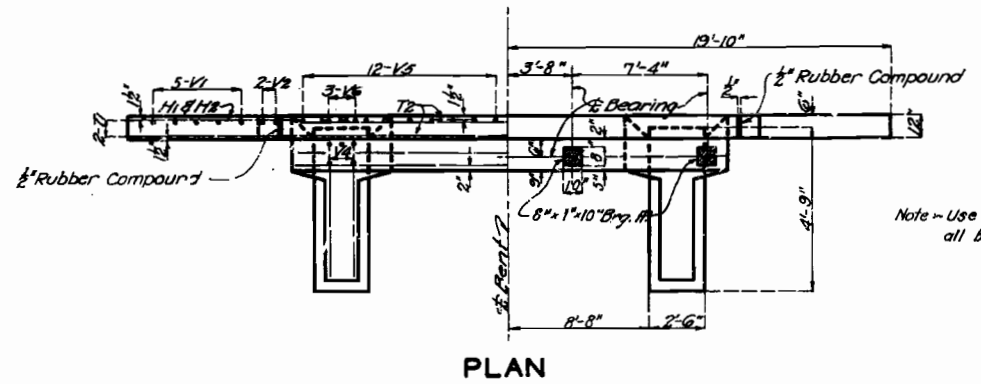
# MISSOURI STATE HIGHWAY DEPARTMENT

FED. DIST. NO.	STATE	FED. AID PROJ. NO.	FISCAL YEAR	SHEET NO.	TOTAL SHEETS
5	MO	R51A-S2	19		



Note: This drawing is not to scale. Follow dimensions.

Note: - U1-P1 bars Bt. #2  
 U1-P3 bars Bt. #3  
 U2-P3 bars Bt. #5



PLAN  
 DETAILS OF BENT NO. 1

PLAN  
 DETAILS OF BENTS NO. 2, 3 & 5

Note - Use 1/2" Grout under all bearing plates.

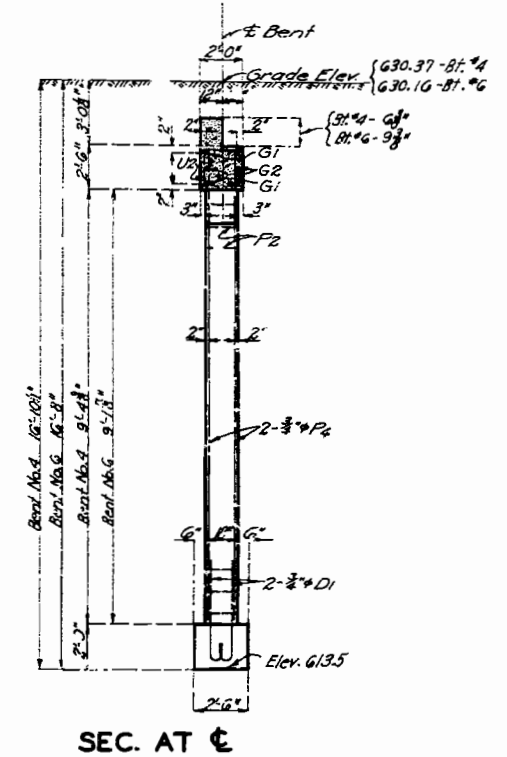
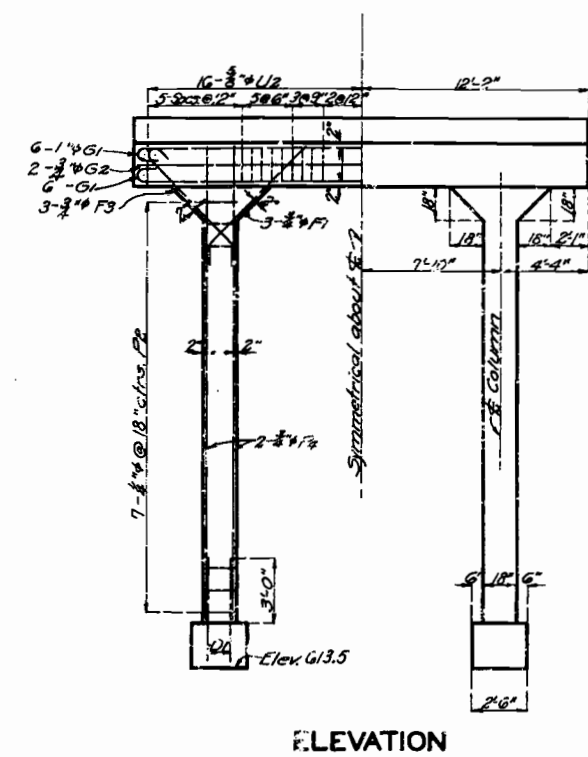
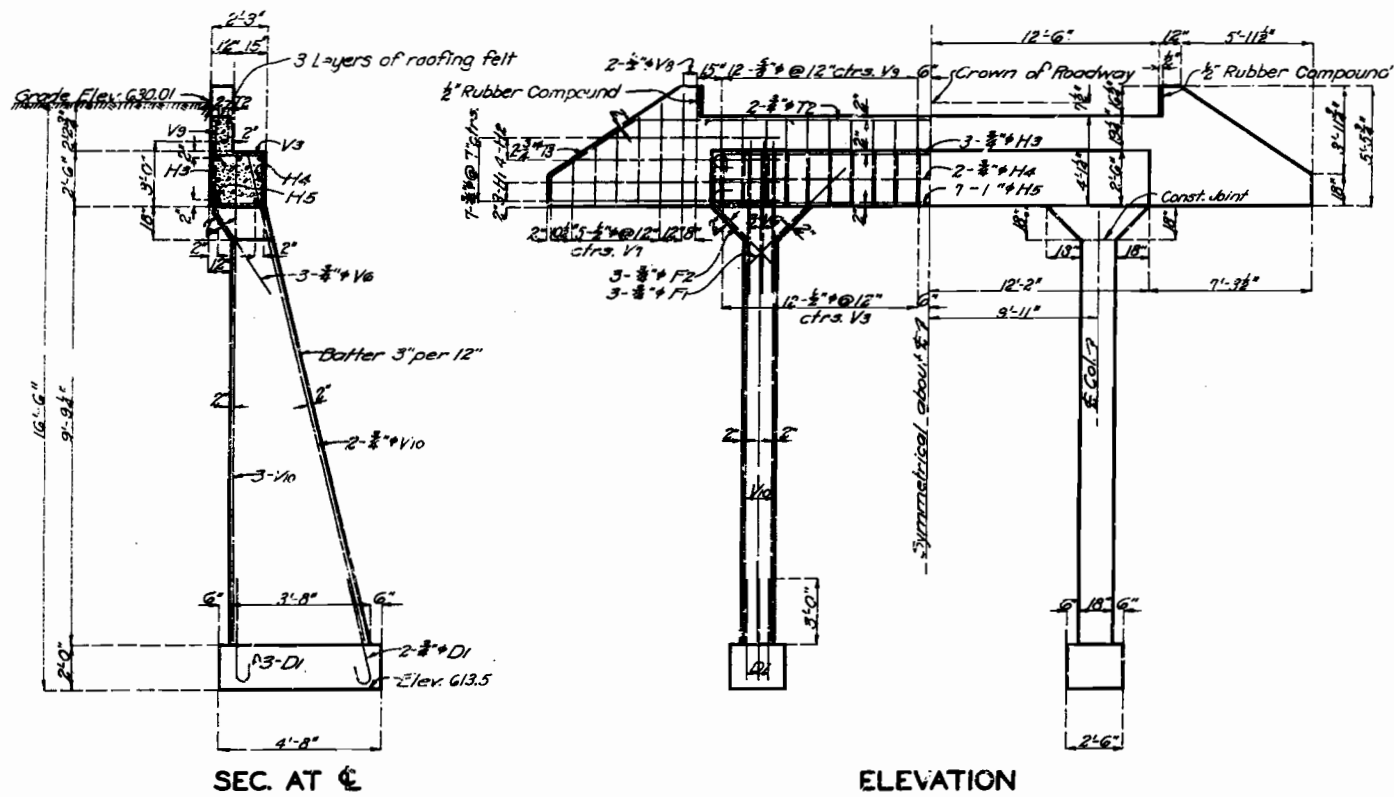
126

**BRIDGE OVER SALINE CREEK**  
 STATE ROAD FROM PERRYVILLE TO SILVER LAKE  
 ABOUT 8 MILES S.W. OF PERRYVILLE FINISHED  
 PROJECT NO. R51A-S2 STA. 411+59  
**PERRY COUNTY**  
 FINISHED

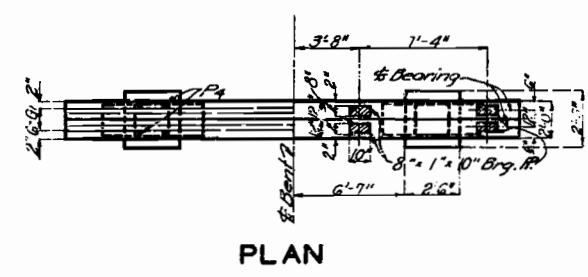
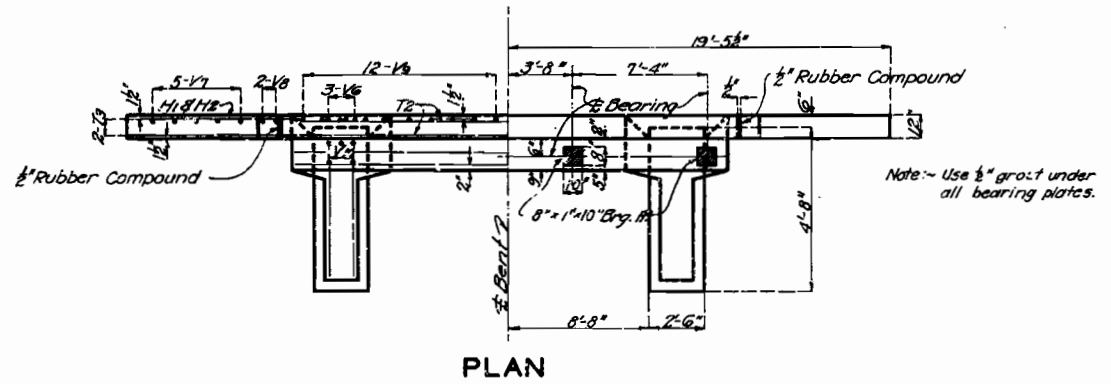
Assembled Jan. 1933 by I.B. & H.E.C.  
 Checked Jan. 1933 by P.H.S.  
 Checked Aug. 1932 by R.H.S.

MISSOURI STATE HIGHWAY DEPARTMENT

FED. ROAD DIST. NO.	STATE	FED. AID PROJ. NO.	FISCAL YEAR	SHEET NO.	TOTAL SHEETS
5	MO	R51A-S.2	19		



Note: This drawing is not to scale. Follow dimensions.



DETAILS OF BENT NO. 7

DETAILS OF BENTS NO. 4 & 6

BRIDGE OVER SALINE CREEK  
 STATE ROAD FROM PERRYVILLE TO SILVER LAKE  
 ABOUT 8 MILES S.W. OF PERRYVILLE  
 PROJECT NO. R.51A-S.2 STA. 411+59  
 PERRY COUNTY

Assembled Jan. 1933 by I.B. & H.E.C.  
 Checked Jan. 1933 by P.H.S.  
 Drawn Nov. 1932 by C.A.F.  
 Checked Aug. 1932 by P.H.S.

Sheet No. 3 of 5.

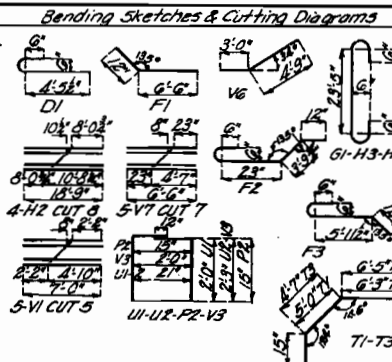
S-734  
 9-17-32

127

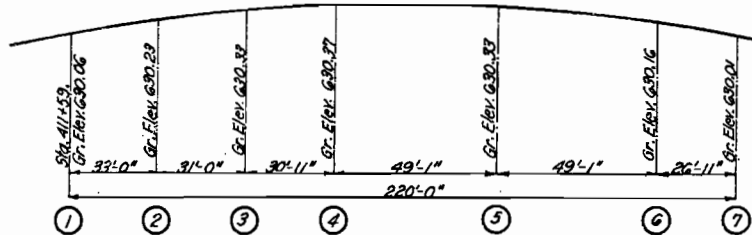
# MISSOURI STATE HIGHWAY DEPARTMENT

FED. ROAD DIST. NO.	STATE	FED. AID PROJ. NO.	FISCAL YEAR	SHEET NO.	TOTAL SHEETS
5	MO.	RS1A-52	19		

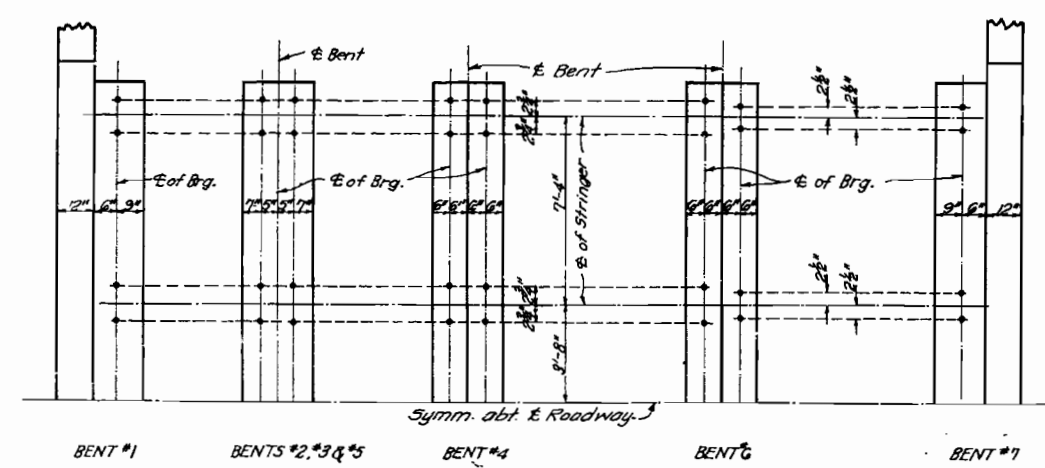
BILL OF REINFORCING STEEL - SUBSTRUCTURE									
No.	Size	Length	Mark	Location	No.	Size	Length	Mark	Location
End Bents No. 1 & 7					Bents No. 1 & 7 (Continued)				
20	5/8"	5'-9"	D1	Footing	4	5/8"	5'-0"	V8	Wing Bl. #7
12	5/8"	7'-6"	F1	Haunch	24	5/8"	3'-9"	V9	Bk. Wall #1
12	5/8"	8'-0"	F2	"	10	5/8"	12'-0"	V10	Column #1
12	5/8"	11'-0"	H1	Wing					
8	5/8"	18'-9"	H2	"					
6	5/8"	26'-0"	H3	Beam	10	5/8"	5'-0"	D1	Footing
4	5/8"	24'-0"	H4	"	30	5/8"	7'-6"	F1	Haunch
12	5/8"	26'-0"	H5	"	30	5/8"	8'-3"	F3	"
4	5/8"	12'-6"	T1	Wing Bl. #1	56	5/8"	26'-0"	G1	Beam
4	5/8"	25'-0"	T2	Back Wall	10	5/8"	24'-0"	G2	"
4	5/8"	12'-3"	T3	Wing Bl. #7	8	5/8"	12'-0"	P1	Col. Bl. #2
5	5/8"	7'-0"	V1	" Bl. #1	70	5/8"	6'-0"	P2	Column
4	5/8"	5'-3"	V2	" "	16	5/8"	12'-6"	P3	Col. Bl. #3
48	5/8"	9'-6"	V3	Beam	16	5/8"	11'-3"	P4	" #4
10	5/8"	12'-3"	V4	Col. Bl. #1	62	5/8"	8'-6"	U1	Beam #2 & 3
24	5/8"	4'-0"	V5	Bk. Wall Bl. #1	93	5/8"	9'-0"	U2	" #4, 5 & 6
12	5/8"	7'-9"	V6	Haunch					
5	5/8"	6'-6"	V7	Wing Bl. #7					



Note: Dimensions given are along E of bars and are for computed lengths. Reinforcing bars 3/4" or over in diameter, which are bent to an angle greater than 90°, shall be of structural grade.



E GRADE ELEVATIONS



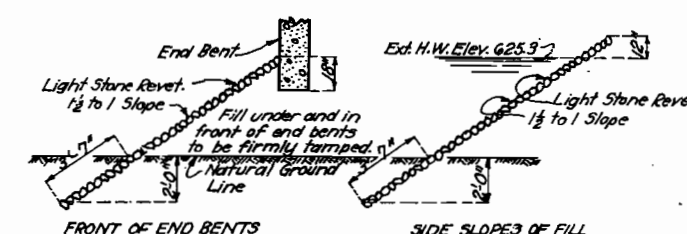
PART ANCHOR BOLT PLAN

BILL OF REINFORCING STEEL - SUPERSTRUCTURE																		
NO.	SIZE	LENGTH	MARK	LOCATION	BENDING SKETCH													
"A"	5/8"	"B"	C1	Curb														
"C"	5/8"	2'-0"	C2	"														
"D"	5/8"	24'-9"	S1	Slab														
"E"	5/8"	"F"	S2	"														
SPAN	S	SINGLE SPAN					ONE END SPAN					ONE INT. SPAN						
		A	B	C	D	E	A	B	C	D	E	F	A	B	C	D	E	F
15'-0"	8	24	26	8	22	26	8	14'-9"	20	64	26	14'-9"	8	14'-9"	20	64	26	14'-9"
17'-0"	8	28	26	8	24	26	8	16'-9"	20	74	26	16'-9"	8	16'-9"	20	74	26	16'-9"
19'-0"	8	28	26	8	28	26	8	18'-9"	28	84	26	18'-9"	8	18'-9"	28	84	26	18'-9"
21'-0"	8	30	26	8	28	26	8	20'-9"	26	92	26	20'-9"	8	20'-9"	26	92	26	20'-9"
23'-0"	8	36	26	8	34	26	8	22'-9"	32	100	26	22'-9"	8	22'-9"	32	100	26	22'-9"
25'-0"	8	36	26	8	36	26	8	26'-9"	36	110	31	26'-9"	8	26'-9"	36	110	31	26'-9"
27'-0"	8	36	26	8	34	26	8	28'-9"	40	126	26	28'-9"	8	28'-9"	40	126	26	28'-9"
29'-0"	8	44	26	8	42	26	8	30'-9"	44	134	31	30'-9"	8	30'-9"	44	134	31	30'-9"
31'-0"	8	44	26	8	44	26	8	32'-9"	44	144	31	32'-9"	8	32'-9"	44	144	31	32'-9"
33'-0"	16	52	52	16	50	52	16	17'-6"	48	146	52	17'-6"	16	17'-6"	48	146	52	17'-6"
35'-0"	16	52	52	16	50	52	16	18'-6"	48	154	52	18'-6"	16	18'-6"	48	154	52	18'-6"
37'-0"	16	52	52	16	50	52	16	19'-6"	48	164	52	19'-6"	16	19'-6"	48	164	52	19'-6"
39'-0"	16	60	52	16	58	52	16	20'-6"	56	172	52	20'-6"	16	20'-6"	56	172	52	20'-6"
41'-0"	16	60	52	16	58	52	16	21'-6"	56	180	52	21'-6"	16	21'-6"	56	180	52	21'-6"
43'-0"	16	60	52	16	58	52	16	22'-6"	56	190	52	22'-6"	16	22'-6"	56	190	52	22'-6"
45'-0"	16	68	52	16	66	52	16	23'-6"	64	198	52	23'-6"	16	23'-6"	64	198	52	23'-6"
47'-0"	16	68	52	16	66	52	16	24'-6"	64	204	52	24'-6"	16	24'-6"	64	204	52	24'-6"
49'-0"	16	68	52	16	66	52	16	25'-6"	64	216	62	25'-6"	16	25'-6"	64	216	62	25'-6"

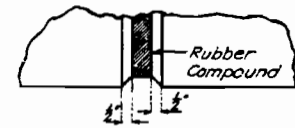
Note: Reinforcing bars in each span to be billed and tagged separately.

SUPERSTRUCTURE HARDWARE BILL					
PIECE	LOCATION	NO. PCS.	SIZE	LENGTH	REMARKS
Handrail Bolts	Spans 15'	16	3/8"	6"	Sq. hds., washers, hex. nuts.
"	" to 19' incl.	12	3/8"	14"	Button heads.
"	Spans 21'	20	3/8"	6"	Sq. hds., washers, hex. nuts.
"	" to 25' incl.	12	3/8"	14"	Button heads.
"	Spans 27'	24	3/8"	6"	Sq. hds., washers, hex. nuts.
"	" to 31' incl.	12	3/8"	14"	Button heads.
"	Spans 33'	28	3/8"	6"	Sq. hds., washers, hex. nuts.
"	" to 37' incl.	12	3/8"	14"	Button heads.
"	Spans 39'	32	3/8"	6"	Sq. hds., washers, hex. nuts.
"	" to 43' incl.	12	3/8"	14"	Button heads.
"	Spans 45'	36	3/8"	6"	Sq. hds., washers, hex. nuts.
"	" to 49' incl.	12	3/8"	14"	Button heads.
Handrail Bolts	Spans 15'	12	5/8"	6"	Sq. hds., washers, hex. nuts.
"	" to 19' incl.	8	5/8"	14"	Button heads.
"	Spans 21'	16	5/8"	6"	Sq. hds., washers, hex. nuts.
"	" to 25' incl.	8	5/8"	14"	Button heads.
"	Spans 27'	20	5/8"	6"	Sq. hds., washers, hex. nuts.
"	" to 31' incl.	8	5/8"	14"	Button heads.
"	Spans 33'	24	5/8"	6"	Sq. hds., washers, hex. nuts.
"	" to 37' incl.	8	5/8"	14"	Button heads.
"	Spans 39'	28	5/8"	6"	Sq. hds., washers, hex. nuts.
"	" to 43' incl.	8	5/8"	14"	Button heads.
"	Spans 45'	32	5/8"	6"	Sq. hds., washers, hex. nuts.
"	" to 49' incl.	8	5/8"	14"	Button heads.
Handrail Bolts	Total Req'd.	144	5/8"	6"	Sq. Hds., washers, hex. nuts.
"	"	32	3/8"	14"	Button Heads.

\* 2 Washers plus washers for fill required for alignment of railposts.



Note: Light Stone Revetment shall be placed on fills at ends of bridge as shown in sketches. Approximately 230 square yards of riprap work included in road contract.



Note: Use bevel as shown for exposed faces of all joints consisting of rubber compound except at top surface of roadway slab. Use edging tool with 1/2" radius at top surface of roadway slab each side of rubber compound joint.

DETAILS OF BEVEL FOR RUBBER COMPOUND JOINTS

**BRIDGE OVER SALINE CREEK**  
 STATE ROAD FROM PERRYVILLE TO SILVER LAKE  
 ABOUT 8 MILES S.W. OF PERRYVILLE FINISHED  
 PROJECT NO. R51A-S-2 STA. 411+59  
**PERRY COUNTY**  
 FINISHED

Designed Nov. 1929 By F.W.H.  
 Drawn Dec. 1930 By R.J.G. Assembled Jan. 1933 By I.B. & H.E.C.-G.W.  
 Traced Dec. 1931 By R.J.G. Checked Jan. 1933 By P.H.3  
 Checked Dec. 1931 By J.M.T.

821





**Missouri Department of Transportation  
State Bridge Inspection Report**

January 02, 2024  
6:31:35AM

COUNTY: PERRY

DISTRICT: SE

CLASS: STATBR

FED-ID: 8828

BRIDGE: S0734

**\*\*\*GENERAL STRUCTURE INFORMATION\*\*\***

**\*\*\*BRIDGE INSPECTION INFORMATION\*\*\***

ROUTE: RTTE  
 FEATURE: SALINE CR  
 STATUS: P-POSTLOAD  
 LOG MILE: 20.014  
 DETOUR: 57.00 MILES  
 NHS: NO  
 BUILT: 1933  
 REHAB:  
 LOCATION: S 36 T 35 R 9 E  
 LATITUDE: 37 41 16.55 (DMS)  
 LONGITUDE: 89 59 1.16 (DMS)

# SPANS: 6  
 LANES ON: 2  
 LANES UNDER: 0  
 COMPASS DIRECTION: NORTH to SOUTH  
 DIRECTION OF TRAFFIC: 2-WAY TRAF  
 FUNCTIONAL CLASS: RL-MAJOR COLLECTOR  
 NBI OWNER: MODOT  
 NBI MAINTAINED: MODOT  
 MAINTENANCE DISTRICT: SE  
 MAINTENANCE COUNTY: PERRY  
 SUB AREA: 7H36

PLACE CODE: 65036 ST. MARYS  
 LENGTH: 220 FT 0 IN  
 MAXIMUM SPAN: 49 FT 1 IN  
 APPROACH ROADWAY: 22 FT 0 IN  
 CURB TO CURB: 20 FT 0 IN  
 OUT TO OUT: 25 FT 0 IN  
 AADT: 1248  
 AADT YEAR: 2022  
 AADT TRUCK: 10.7%  
 FUTURE AADT: 1747  
 FUTURE AADT YEAR: 2042

DATE: 10/10/2023      RESPONSIBILITY: DISTRICT  
 FREQUENCY: 12      CALCULATED INTERVAL\*\*:  
 TEAM LEADER: ED HESS      ELEMENT: NO  
 INSPECTOR 2:      INSPECTOR 4:  
 INSPECTOR 3:  
 \*\* When calculated interval exceeds the frequency, a justification comment per BIRM is required.

**GENERAL INSPECTION COMMENTS**

**\*\*\*FRACTURE CRITICAL INSPECTION INFORMATION\*\*\***

**\*\*\*INDEPTH INSPECTION INFORMATION\*\*\***

DATE:      RESPONSIBILITY:      CATEGORY:  
 FREQUENCY:      CALCULATED INTERVAL\*\*:  
 TEAM LEADER:      INSPECTOR 3:      NBI:  
 INSPECTOR 2:      INSPECTOR 4:      METHOD:

\*\* When calculated interval exceeds the frequency, a justification comment per BIRM is required.

DATE:      RESPONSIBILITY:      CATEGORY:  
 FREQUENCY:      CALCULATED INTERVAL\*\*:  
 TEAM LEADER:      INSPECTOR 3:      NBI:  
 INSPECTOR 2:      INSPECTOR 4:      METHOD:

\*\* When calculated interval exceeds the frequency, a justification comment per BIRM is required.

**FRACTURE CRITICAL INSPECTION COMMENTS**

**INDEPTH INSPECTION COMMENTS**

**\*\*\*SPECIAL INSPECTION INFORMATION\*\*\***

**\*\*\*UNDERWATER INSPECTION INFORMATION\*\*\***

DATE: 09/19/2023      RESPONSIBILITY: DISTRICT      CATEGORY: SUPERSTRUCTURE  
 FREQUENCY: 999      CALCULATED INTERVAL\*\*:  
 TEAM LEADER: TERRY L SHUNAMON      INSPECTOR 3:      NBI: NO  
 INSPECTOR 2: ED HESS      INSPECTOR 4:      METHOD: VISUAL

\*\* When calculated interval exceeds the frequency, a justification comment per BIRM is required.

DATE: 10/10/2023      RESPONSIBILITY: DISTRICT      CATEGORY: DRY  
 FREQUENCY: 60      CALCULATED INTERVAL\*\*:  
 TEAM LEADER: ED HESS      INSPECTOR 3:      NBI: NO  
 INSPECTOR 2:      INSPECTOR 4:      METHOD: VISUAL

\*\* When calculated interval exceeds the frequency, a justification comment per BIRM is required.

**SPECIAL INSPECTION COMMENTS**

**UNDERWATER INSPECTION COMMENTS**

**OTHER SPECIAL INSPECTIONS**

**OTHER UNDERWATER INSPECTIONS**

DATE	FREQUENCY	CATEGORY	NBI	CALCULATED INTERVAL	RESPONSIBILITY	METHOD
09/02/2020	72	CHANNEL CROSS SECTIONS	NO	75	DISTRICT	WT TAPE
05/09/2017	999	DAMAGE POST INCIDENT	NO		DISTRICT	

DATE	FREQUENCY	CATEGORY	NBI	CALCULATED INTERVAL	RESPONSIBILITY	METHOD
------	-----------	----------	-----	---------------------	----------------	--------

Design\_No = S0734



**Missouri Department of Transportation  
State Bridge Inspection Report**

January 02, 2024  
6:31:35AM

COUNTY: PERRY

DISTRICT: SE

CLASS: STATBR

FED-ID: 8828

BRIDGE: S0734

**\*\*\*STRUCTURE POSTING\*\*\***

**APPROVED CATEGORY:** S-16 TRKS OVR 14 TNS 15MPH ON BR EXCPT SNGL UNIT TRKS WT LIMIT 19 TNS&ALL OTHR TRKS WT LIMIT 33 TNS.  
**Ton 1:** 14 **Ton 2:** 19 **Ton 3:** 33

**COMMENTS:**

**FIELD CATEGORY:** S-16 TRKS OVR 14 TNS 15MPH ON BR EXCPT SNGL UNIT TRKS WT LIMIT 19 TNS&ALL OTHR TRKS  
**Ton 1:** 14 **Ton 2:** 19 **Ton 3:** 33 **PROBLEM:** **PROBLEM DIRECTION:**

**COMMENTS:**

**\*\*\*GENERAL COMMENTS/MAJOR RATED ITEMS\*\*\***

**GENERAL COMMENTS:** (BOWDEJ1, 09/04/2008)--(33'-31'-30'-49'-49'-26') SMP WF GDR SPANS

**[ITEM 58] DECK:** 3-SERIOUS CONDITION **COMMENTS:** (DENNIB1, 10/17/2013)--EDGE DETERIORATION & SATURATION  
**RATING :** 10/27/2022 (WILSOT2, 10/23/2017)--LARGE FULL DEPTH PATCHES HEAVY SPALLS AT JOINTS

**[ITEM 59] SUPER:** 3-SERIOUS CONDITION **COMMENTS:** (HESSE, 09/20/2023)--SECTION LOSS OF BOTTOM FLANGES  
**RATING :** 09/20/2023

**[ITEM 60] SUB:** 4-POOR CONDITION **COMMENTS:** (GOODMJ1, 02/21/2002)--SOUTHEAST BEARING SEAT AT 2ND BENT FROM SOUTH REPAIRED 1-02 HR2  
**RATING :** 10/13/2023 (DENNIB1, 10/17/2013)--EXPOSED SPREAD FOOTING  
 (BRAWLK1, 10/13/2023)--EXPOSED REBAR THROUGHOUT

**[ITEM 61] BANK/CHANNEL:** 5-MAJOR DAMAGE **COMMENTS:** (CROCKC1, 05/22/2017)--SOUTH SLOPE WASHED DOWNSTREAM  
**RATING :** 10/25/2017 (WILSOT2, 10/23/2017)--MINOR BANK EROSION  
 (WILSOT2, 10/25/2017)--BANK PROTECTION IS BEING ERODED

**[ITEM 113] SCOUR:** 8-STABLE FOR CALCULATED **COMMENTS:** (WILSOT2, 10/23/2017)--STABLE  
**RATING :** 05/18/2001  
**EVALUATION TYPE :**

**[ITEM 71] WATERWAY ADEQUACY:** MINOR DELAYS APPRCH **COMMENTS:**  
**RATING :** 05/18/2001

**[ITEM 72] APPRRDWY ALIGNMENT:** 6-SATISFACTORY **COMMENTS:**  
**RATING :** 05/18/2001

**\*\*\*RAILING AND APPROACH PAVEMENT COMPONENTS AND RATINGS\*\*\***

**[ITEM 36A] BRIDGE RAILING RATING:** DOESNT MEET CURRNT STND-0 **RATING :** 02/23/2004 **COMMENTS:**

<u>MATERIAL</u>	<u>CONSTRUCTION</u>	<u>DIRECTION</u>	<u>COMMENTS</u>
STEEL	ANGLE-DOUBLE	BOTH	
REINFORCED CONCRETE	CURB	BOTH	

**[ITEM 36B] TRANSITION RAILING RATING:** NOT PROVIDED-0 **RATING :** 05/18/2001 **COMMENTS:**

**[ITEM 36C] APPROACH RAILING RATING:** NOT PROVIDED-0 **RATING :** 05/18/2001 **COMMENTS:**

**[ITEM 36D] RAIL END TREATMENT RATING:** NOT PROVIDED-0 **RATING :** 05/18/2001 **COMMENTS:**



**Missouri Department of Transportation  
State Bridge Inspection Report**

January 02, 2024  
6:31:35AM

COUNTY: PERRY

DISTRICT: SE

CLASS: STATBR

FED-ID: 8828

BRIDGE: S0734

**APPROACH PAVEMENT:** \*Overall condition assigned for each approach pavemenet component is shown below.

<u>MATERIAL</u>	<u>CONSTRUCTION</u>	<u>DIRECTION</u>	<u>CONDITION*</u>	<u>COMMENTS</u>
ASPHALT	BITUMINOUS MAT	BOTH	POOR	

**\*\*\*DRAINAGE, EXPANSION DEVICES, BANK/SLOPE, AND DECK PROTECTIVE COMPONENTS\*\*\***

**DECK PROTECTIVE COMPONENTS:**

<u>SERIES TYPE-#</u>	<u>COMPONENT</u>	<u>MATERIAL</u>	<u>CONSTRUCTION</u>	<u>THICKNESS</u>	<u>YEAR APPLIED</u>	<u>MANUFACTURE</u>	<u>OVERALL CONDITION</u>
MAIN SERIES-1	WEARING SURFACE	ASPHALT	BITUMINOUS MAT		2005		POOR
<b><u>COMMENT:</u></b>							
	DECK PROTECTION	NOTAPPLICABLE	NONE				
<b><u>COMMENT:</u></b>							
	MEMBRANE	NOTAPPLICABLE	NONE				
<b><u>COMMENT:</u></b>							

**DRAINAGE COMPONENTS:**

<u>COMPONENT</u>	<u>MATERIAL</u>	<u>CONSTRUCTION</u>	<u>DIRECTION</u>	<u>COMMENTS</u>
DRAINAGE	REINFORCED CONCRETE	CURB OUTLET		

**EXPANSION DEVICE COMPONENTS:**

<u>SUB UNIT-#</u>	<u>SUB LABEL</u>	<u>COMPONENT</u>	<u>MATERIAL</u>	<u>CONSTRUCTION</u>	<u>GAP</u>	<u>YEAR APPLIED</u>	<u>MANUFACTURE</u>	<u>OVERALL CONDITION</u>
<b><u>COMMENT:</u></b>								

**BANK/SLOPE PROTECTION COMPONENTS:**

<u>COMPONENT</u>	<u>MATERIAL</u>	<u>CONSTRUCTION</u>	<u>DIRECTION</u>	<u>COMMENTS</u>
BANK PROTECTION	ROCK	GROUTED	BOTH	

**\*\*\*DECK COMPONENTS\*\*\***

<u>SPAN TYPE-#</u>	<u>COMPONENT</u>	<u>MATERIAL</u>	<u>CONSTRUCTION</u>	<u>COMMENTS</u>
MAIN SPANS-1	DECK	REINFORCED CONCRETE	CAST-IN-PLACE	
	<b><u>CONDITION</u></b>	<b><u>LOCATION 1</u></b>	<b><u>LOCATION 2</u></b>	<b><u>SEVERITY</u></b> <b><u>MEASUREMENT</u></b> <b><u>COMMENT</u></b>
	DELAMINATION	THROUGHOUT		MODERATE
	DETERIORATION	EDGE		MODERATE
	EFFLORESCENCE	THROUGHOUT		HEAVY
	FULL DEPTH PATCHES	THROUGHOUT		MANY
	REBAR EXPOSED	THROUGHOUT		MINOR
	SATURATION	THROUGHOUT		MODERATE
	SPALLS	THROUGHOUT		HEAVY
	TRANSVERSE CRACKS	THROUGHOUT		MODERATE
MAIN SPANS-2	DECK	REINFORCED CONCRETE	CAST-IN-PLACE	
	<b><u>CONDITION</u></b>	<b><u>LOCATION 1</u></b>	<b><u>LOCATION 2</u></b>	<b><u>SEVERITY</u></b> <b><u>MEASUREMENT</u></b> <b><u>COMMENT</u></b>
	DELAMINATION	THROUGHOUT		MODERATE
	DETERIORATION	EDGE		MODERATE





**Missouri Department of Transportation  
State Bridge Inspection Report**

January 02, 2024  
6:31:35AM

COUNTY: PERRY

DISTRICT: SE

CLASS: STATBR

FED-ID: 8828

BRIDGE: S0734

EFFLORESCENCE	THROUGHOUT	MODERATE		
FULL DEPTH PATCHES	THROUGHOUT	MANY	(SIMPSB, 10/08/2005)--MANY MADE PRIOR TO OVERLAY 2005	
REBAR EXPOSED	THROUGHOUT	HEAVY		
SATURATION	THROUGHOUT	HEAVY		
SPALLS	THROUGHOUT	MANY		
TRANSVERSE CRACKS	THROUGHOUT	MODERATE		

MAIN SPANS-3 DECK

REINFORCED CONCRETE CAST-IN-PLACE

<u>CONDITION</u>	<u>LOCATION 1</u>	<u>LOCATION 2</u>	<u>SEVERITY</u>	<u>MEASUREMENT</u>	<u>COMMENT</u>
DELAMINATION	THROUGHOUT		MODERATE		
DETERIORATION	EDGE		MODERATE		
EFFLORESCENCE	THROUGHOUT		HEAVY		
FULL DEPTH PATCHES	THROUGHOUT		MANY	(SIMPSB, 10/08/2005)--MANY MADE PRIOR TO OVERLAY 2005	
REBAR EXPOSED	THROUGHOUT		HEAVY		
SATURATION	THROUGHOUT		MODERATE		
SPALLS	THROUGHOUT		MANY		
TRANSVERSE CRACKS	THROUGHOUT		MODERATE		

MAIN SPANS-4 DECK

REINFORCED CONCRETE CAST-IN-PLACE

<u>CONDITION</u>	<u>LOCATION 1</u>	<u>LOCATION 2</u>	<u>SEVERITY</u>	<u>MEASUREMENT</u>	<u>COMMENT</u>
DELAMINATION	THROUGHOUT		MODERATE		
DETERIORATION	EDGE		MODERATE		(DENNIB1, 10/10/2019)--SECOND LOCATION-JOINTS
EFFLORESCENCE	THROUGHOUT		HEAVY		
FULL DEPTH PATCHES	THROUGHOUT		MANY	(SIMPSB, 10/08/2005)--MANY MADE PRIOR TO OVERLAY 2005	
REBAR EXPOSED	THROUGHOUT		HEAVY		
SATURATION	THROUGHOUT		MODERATE		
SPALLS	THROUGHOUT		MODERATE		
TRANSVERSE CRACKS	THROUGHOUT		MODERATE		

MAIN SPANS-5 DECK

REINFORCED CONCRETE CAST-IN-PLACE

<u>CONDITION</u>	<u>LOCATION 1</u>	<u>LOCATION 2</u>	<u>SEVERITY</u>	<u>MEASUREMENT</u>	<u>COMMENT</u>
DELAMINATION	THROUGHOUT		MODERATE		
DETERIORATION	EDGE		HEAVY		(ROBINC3, 11/30/2018)--W/RUST STAINS
EFFLORESCENCE	THROUGHOUT		MODERATE		
FULL DEPTH PATCHES	THROUGHOUT		MANY	(SIMPSB, 10/08/2005)--MANY MADE PRIOR TO OVERLAY 2005	
REBAR EXPOSED	THROUGHOUT		MINOR		
SATURATION	THROUGHOUT		MINOR		
SPALLS	THROUGHOUT		MINOR		
TRANSVERSE CRACKS	THROUGHOUT		MODERATE		

MAIN SPANS-6 DECK

REINFORCED CONCRETE CAST-IN-PLACE

<u>CONDITION</u>	<u>LOCATION 1</u>	<u>LOCATION 2</u>	<u>SEVERITY</u>	<u>MEASUREMENT</u>	<u>COMMENT</u>
DELAMINATION	THROUGHOUT		MODERATE		
DETERIORATION	EDGE		MODERATE		
EFFLORESCENCE	THROUGHOUT		MODERATE		
FULL DEPTH PATCHES	THROUGHOUT		MANY	(SIMPSB, 10/08/2005)--MANY MADE PRIOR TO OVERLAY 2005	
REBAR EXPOSED	THROUGHOUT		MINOR		
SATURATION	THROUGHOUT		MINOR		
SPALLS	THROUGHOUT		MODERATE		
TRANSVERSE CRACKS	THROUGHOUT		MODERATE		



**Missouri Department of Transportation  
State Bridge Inspection Report**

January 02, 2024  
6:31:35AM

COUNTY: PERRY

DISTRICT: SE

CLASS: STATBR

FED-ID: 8828

BRIDGE: S0734

\*\*\*SUPERSTRUCTURE COMPONENTS\*\*\*

<u>SERIES TYPE-#</u>	<u>SPAN TYPE</u>	<u>MATERIAL</u>	<u>CONSTRUCTION</u>	<u>LABEL</u>	<u>COMMENTS</u>
MAIN SERIES-1	SIMPLE SPAN	STEEL	WIDE FLANGE GIRDERS		(REHAGM, 02/27/2004)--DECK BOLTED
<u>SPAN</u>	<u>COMPOSITE INDICATOR</u>	<u>LENGTH</u>	<u>WEATHERING STEEL</u>	<u>COMMENTS</u>	
MAIN SPANS-1	NON-COMPOSITE	33 FT 0 IN	NO		
<u>CONDITION</u>	<u>LOCATION 1</u>	<u>LOCATION 2</u>	<u>SEVERITY</u>	<u>MEASUREMENT</u>	<u>COMMENT</u>
PACK RUST	EXTERIOR GIRDERS		MINOR		
PACK RUST	THROUGHOUT		MINOR		
RUSTING	BOTTOM FLANGE		MINOR		
RUSTING	THROUGHOUT		MINOR		(ROBINC3, 11/30/2018)--PUMPING RUST
SECTION LOSS	AT JOINTS		MINOR		
SECTION LOSS	BOTTOM FLANGE		INITIAL		
SECTION LOSS	TOP FLANGE		INITIAL		
MAIN SPANS-2	NON-COMPOSITE	31 FT 0 IN	NO		
<u>CONDITION</u>	<u>LOCATION 1</u>	<u>LOCATION 2</u>	<u>SEVERITY</u>	<u>MEASUREMENT</u>	<u>COMMENT</u>
PACK RUST	EXTERIOR GIRDERS		MINOR		
PACK RUST	THROUGHOUT		MINOR		
RUSTING	BOTTOM FLANGE		MINOR		
RUSTING	THROUGHOUT		MINOR		(ROBINC3, 11/30/2018)--PUMPING RUST
SECTION LOSS	BOTTOM FLANGE		INITIAL		(ELSEMJ, 01/24/2012)--AT BEARING AREAS
SECTION LOSS	TOP FLANGE		INITIAL		
MAIN SPANS-3	NON-COMPOSITE	30 FT 11 IN	NO		
<u>CONDITION</u>	<u>LOCATION 1</u>	<u>LOCATION 2</u>	<u>SEVERITY</u>	<u>MEASUREMENT</u>	<u>COMMENT</u>
PACK RUST	EXTERIOR GIRDERS		MINOR		
PACK RUST	THROUGHOUT		MODERATE		
RUSTING	BOTTOM FLANGE		SEVERE		
RUSTING	THROUGHOUT		MINOR		(ROBINC3, 11/30/2018)--PUMPING RUST
SECTION LOSS	BOTTOM FLANGE		SEVERE		
SECTION LOSS	TOP FLANGE		SEVERE		
MAIN SPANS-4	NON-COMPOSITE	49 FT 1 IN	NO		
<u>CONDITION</u>	<u>LOCATION 1</u>	<u>LOCATION 2</u>	<u>SEVERITY</u>	<u>MEASUREMENT</u>	<u>COMMENT</u>
PACK RUST	EXTERIOR GIRDERS		MINOR		
PACK RUST	THROUGHOUT		MINOR		
RUSTING	BOTTOM FLANGE		SEVERE		
RUSTING	THROUGHOUT		MODERATE		(ROBINC3, 11/30/2018)--PUMPING RUST
SECTION LOSS	BOTTOM FLANGE		SEVERE		
SECTION LOSS	TOP FLANGE		MINOR		
MAIN SPANS-5	NON-COMPOSITE	49 FT 1 IN	NO		
<u>CONDITION</u>	<u>LOCATION 1</u>	<u>LOCATION 2</u>	<u>SEVERITY</u>	<u>MEASUREMENT</u>	<u>COMMENT</u>
PACK RUST	EXTERIOR GIRDERS		MODERATE		
PACK RUST	THROUGHOUT		MODERATE		
RUSTING	BOTTOM FLANGE		MINOR		
RUSTING	THROUGHOUT		MODERATE		
SECTION LOSS	TOP FLANGE		MINOR		
MAIN SPANS-6	NON-COMPOSITE	26 FT 11 IN	NO		



**Missouri Department of Transportation  
State Bridge Inspection Report**

January 02, 2024  
6:31:35AM

COUNTY: PERRY

DISTRICT: SE

CLASS: STATBR

FED-ID: 8828

BRIDGE: S0734

<u>CONDITION</u>	<u>LOCATION 1</u>	<u>LOCATION 2</u>	<u>SEVERITY</u>	<u>MEASUREMENT</u>	<u>COMMENT</u>
PACK RUST	EXTERIOR GIRDERS		MODERATE		
PACK RUST	THROUGHOUT		MODERATE		
RUSTING	THROUGHOUT		MODERATE		(ROBINC3, 11/30/2018)--PUMPING RUST
SECTION LOSS	BOTTOM FLANGE		SEVERE		
SECTION LOSS	TOP FLANGE		MINOR		
SECTION LOSS	WEB		MODERATE		

**\*\*\*SUBSTRUCTURE COMPONENTS\*\*\***

<u>SUBSTRUCTURE</u>	<u>SKEW</u>	<u>LENGTH</u>	<u>MATERIAL</u>	<u>CONSTRUCTION</u>	<u>LABEL</u>	<u>COMMENTS</u>
ABUTMENT-1		25 FT 0 IN	REINFORCED CONCRETE	OPEN CONCRETE		
	<u>CONDITION</u>		<u>LOCATION 1</u>	<u>LOCATION 2</u>	<u>SEVERITY</u>	<u>MEASUREMENT</u> <u>COMMENT</u>
<u>ASSOCIATED COMPONENT</u>			<u>MATERIAL</u>	<u>CONSTRUCTION</u>		
BACKWALL			REINFORCED CONCRETE	CAST-IN-PLACE		
	<u>CONDITION</u>		<u>LOCATION 1</u>	<u>LOCATION 2</u>	<u>SEVERITY</u>	<u>MEASUREMENT</u> <u>COMMENT</u>
	HORIZONTAL CRACKS		THROUGHOUT		MEDIUM	
	REBAR EXPOSED		THROUGHOUT		MINOR	
	SPALLS		THROUGHOUT		MEDIUM	
BEAM CAP			REINFORCED CONCRETE	CAST-IN-PLACE		
	<u>CONDITION</u>		<u>LOCATION 1</u>	<u>LOCATION 2</u>	<u>SEVERITY</u>	<u>MEASUREMENT</u> <u>COMMENT</u>
	DELAMINATION		RANDOM		MINOR	
	REBAR SECTION LOSS		THROUGHOUT		INITIAL	
	SPALLS		THROUGHOUT		MODERATE	(ROBINC3, 11/30/2018)--W/EXPOSED REBAR
	VERTICAL CRACKS		THROUGHOUT		MINOR	
COLUMN			REINFORCED CONCRETE	CAST-IN-PLACE		
	<u>CONDITION</u>		<u>LOCATION 1</u>	<u>LOCATION 2</u>	<u>SEVERITY</u>	<u>MEASUREMENT</u> <u>COMMENT</u>
FOOTING			REINFORCED CONCRETE	SPREAD		
	<u>CONDITION</u>		<u>LOCATION 1</u>	<u>LOCATION 2</u>	<u>SEVERITY</u>	<u>MEASUREMENT</u> <u>COMMENT</u>
STRAIGHT WINGS			REINFORCED CONCRETE	CAST-IN-PLACE		
	<u>CONDITION</u>		<u>LOCATION 1</u>	<u>LOCATION 2</u>	<u>SEVERITY</u>	<u>MEASUREMENT</u> <u>COMMENT</u>
FIXED BEARING			STEEL	FLAT PLATE		
	<u>CONDITION</u>		<u>LOCATION 1</u>	<u>LOCATION 2</u>	<u>SEVERITY</u>	<u>MEASUREMENT</u> <u>COMMENT</u>
	PACK RUST		THROUGHOUT		MODERATE	
BENT-2		24 FT 4 IN	REINFORCED CONCRETE	MULTIPLE COLUMN		
	<u>CONDITION</u>		<u>LOCATION 1</u>	<u>LOCATION 2</u>	<u>SEVERITY</u>	<u>MEASUREMENT</u> <u>COMMENT</u>
<u>ASSOCIATED COMPONENT</u>			<u>MATERIAL</u>	<u>CONSTRUCTION</u>		
BEAM CAP			REINFORCED CONCRETE	CAST-IN-PLACE		
	<u>CONDITION</u>		<u>LOCATION 1</u>	<u>LOCATION 2</u>	<u>SEVERITY</u>	<u>MEASUREMENT</u> <u>COMMENT</u>
	DELAMINATION		THROUGHOUT		MINOR	
	HORIZONTAL CRACKS		THROUGHOUT		RANDOM	
	REBAR EXPOSED		BOTTOM		EXCESSIVE	(WILSOT2, 10/23/2017)--ADVANCED SEC LOSS REBAR
	SPALLS		THROUGHOUT		MODERATE	
	VERTICAL CRACKS		THROUGHOUT		MINOR	
COLUMN			REINFORCED CONCRETE	CAST-IN-PLACE		
	<u>CONDITION</u>		<u>LOCATION 1</u>	<u>LOCATION 2</u>	<u>SEVERITY</u>	<u>MEASUREMENT</u> <u>COMMENT</u>
	HORIZONTAL CRACKS		THROUGHOUT		MANY	(ROBINC3, 01/24/2019)--ON COLUMN CAPITOL
	REBAR SECTION LOSS		THROUGHOUT		INITIAL	(ROBINC3, 01/24/2019)--ON COLUMN CAPITOL
	SPALLS		COLUMN		MINOR	(ROBINC3, 11/30/2018)--W/EXPOSED REBAR (ROBINC3, 01/24/2019)--ON COLUMN CAPITOL
FOOTING			REINFORCED CONCRETE	SPREAD		
	<u>CONDITION</u>		<u>LOCATION 1</u>	<u>LOCATION 2</u>	<u>SEVERITY</u>	<u>MEASUREMENT</u> <u>COMMENT</u>



**Missouri Department of Transportation  
State Bridge Inspection Report**

January 02, 2024  
6:31:35AM

COUNTY: PERRY

DISTRICT: SE

CLASS: STATBR

FED-ID: 8828

BRIDGE: S0734

FIXED BEARING	EXPOSED	THROUGHOUT	STEEL	FLAT PLATE	MODERATE		
	<u>CONDITION</u>		<u>LOCATION 1</u>	<u>LOCATION 2</u>	<u>SEVERITY</u>	<u>MEASUREMENT</u>	<u>COMMENT</u>
	PACK RUST	THROUGHOUT			MINOR		
<i>BENT-3</i>		<i>24 FT 4 IN</i>	<i>REINFORCED CONCRETE</i>	<i>MULTIPLE COLUMN</i>			
	<u>CONDITION</u>		<u>LOCATION 1</u>	<u>LOCATION 2</u>	<u>SEVERITY</u>	<u>MEASUREMENT</u>	<u>COMMENT</u>
<u>ASSOCIATED COMPONENT</u>	<u>MATERIAL</u>		<u>CONSTRUCTION</u>				
BEAM CAP			REINFORCED CONCRETE	CAST-IN-PLACE			
	<u>CONDITION</u>		<u>LOCATION 1</u>	<u>LOCATION 2</u>	<u>SEVERITY</u>	<u>MEASUREMENT</u>	<u>COMMENT</u>
	DELAMINATION	THROUGHOUT			MODERATE		
	HORIZONTAL CRACKS	THROUGHOUT			MINOR		(ROBINC3, 11/30/2018)--W/RUST STAINS
	SPALLS	THROUGHOUT			MEDIUM		
	VERTICAL CRACKS	THROUGHOUT			MINOR		
COLUMN			REINFORCED CONCRETE	CAST-IN-PLACE			
	<u>CONDITION</u>		<u>LOCATION 1</u>	<u>LOCATION 2</u>	<u>SEVERITY</u>	<u>MEASUREMENT</u>	<u>COMMENT</u>
	DELAMINATION	THROUGHOUT			MODERATE		
	REBAR EXPOSED	THROUGHOUT			MINOR		(ROBINC3, 11/30/2018)--W/INIT SECT LOSS
	SPALLS	THROUGHOUT			MEDIUM		
FOOTING			REINFORCED CONCRETE	SPREAD			
	<u>CONDITION</u>		<u>LOCATION 1</u>	<u>LOCATION 2</u>	<u>SEVERITY</u>	<u>MEASUREMENT</u>	<u>COMMENT</u>
	EXPOSED	THROUGHOUT			MODERATE		
	SCALING	THROUGHOUT			MODERATE		
FIXED BEARING			STEEL	FLAT PLATE			
	<u>CONDITION</u>		<u>LOCATION 1</u>	<u>LOCATION 2</u>	<u>SEVERITY</u>	<u>MEASUREMENT</u>	<u>COMMENT</u>
	PACK RUST	THROUGHOUT			MINOR		
<i>BENT-4</i>		<i>24 FT 4 IN</i>	<i>REINFORCED CONCRETE</i>	<i>MULTIPLE COLUMN</i>			
	<u>CONDITION</u>		<u>LOCATION 1</u>	<u>LOCATION 2</u>	<u>SEVERITY</u>	<u>MEASUREMENT</u>	<u>COMMENT</u>
<u>ASSOCIATED COMPONENT</u>	<u>MATERIAL</u>		<u>CONSTRUCTION</u>				
BEAM CAP			REINFORCED CONCRETE	CAST-IN-PLACE			
	<u>CONDITION</u>		<u>LOCATION 1</u>	<u>LOCATION 2</u>	<u>SEVERITY</u>	<u>MEASUREMENT</u>	<u>COMMENT</u>
	DELAMINATION	THROUGHOUT			MINOR		
	EFFLORESCENCE	THROUGHOUT			MINOR		
	HORIZONTAL CRACKS	THROUGHOUT			FINE		
	REBAR EXPOSED	THROUGHOUT			MINOR		
	REBAR SECTION LOSS	THROUGHOUT			MINOR		
	SEALED	BEAM CAP			ASPHALTICBASE		
	SPALLS	THROUGHOUT			MODERATE		
COLUMN			REINFORCED CONCRETE	CAST-IN-PLACE			
	<u>CONDITION</u>		<u>LOCATION 1</u>	<u>LOCATION 2</u>	<u>SEVERITY</u>	<u>MEASUREMENT</u>	<u>COMMENT</u>
	DELAMINATION	THROUGHOUT			MINOR		
	HORIZONTAL CRACKS	THROUGHOUT			MANY		
	REBAR EXPOSED	THROUGHOUT			MINOR		
	REBAR SECTION LOSS	THROUGHOUT			INITIAL		
	SCALING	THROUGHOUT			MINOR		
	SPALLS	THROUGHOUT			MODERATE		
FOOTING			REINFORCED CONCRETE	SPREAD			
	<u>CONDITION</u>		<u>LOCATION 1</u>	<u>LOCATION 2</u>	<u>SEVERITY</u>	<u>MEASUREMENT</u>	<u>COMMENT</u>
	EXPOSED	THROUGHOUT			MODERATE		
FIXED BEARING			STEEL	FLAT PLATE			
	<u>CONDITION</u>		<u>LOCATION 1</u>	<u>LOCATION 2</u>	<u>SEVERITY</u>	<u>MEASUREMENT</u>	<u>COMMENT</u>
	PACK RUST	THROUGHOUT			MINOR		



COUNTY: PERRY

DISTRICT: SE

Missouri Department of Transportation  
State Bridge Inspection Report

CLASS: STATBR

FED-ID: 8828

BRIDGE: S0734

January 02, 2024  
6:31:35AM

<i>BENT-5</i>	<i>24 FT 4 IN</i>	<i>REINFORCED CONCRETE</i>	<i>MULTIPLE COLUMN</i>			
<u>ASSOCIATED COMPONENT</u>	<u>MATERIAL</u>	<u>CONSTRUCTION</u>	<u>SEVERITY</u>	<u>MEASUREMENT</u>	<u>COMMENT</u>	
BEAM CAP	REINFORCED CONCRETE	CAST-IN-PLACE	MODERATE			
<u>CONDITION</u>	<u>LOCATION 1</u>	<u>LOCATION 2</u>	<u>SEVERITY</u>	<u>MEASUREMENT</u>	<u>COMMENT</u>	
DELAMINATION	THROUGHOUT		MINOR			
REBAR EXPOSED	THROUGHOUT		MINOR			
SCALING	THROUGHOUT		MODERATE			
SPALLS	THROUGHOUT					
COLUMN	REINFORCED CONCRETE	CAST-IN-PLACE				
<u>CONDITION</u>	<u>LOCATION 1</u>	<u>LOCATION 2</u>	<u>SEVERITY</u>	<u>MEASUREMENT</u>	<u>COMMENT</u>	
FOOTING	REINFORCED CONCRETE	SPREAD				
<u>CONDITION</u>	<u>LOCATION 1</u>	<u>LOCATION 2</u>	<u>SEVERITY</u>	<u>MEASUREMENT</u>	<u>COMMENT</u>	
EXPOSED	THROUGHOUT		MODERATE			
FIXED BEARING	STEEL	FLAT PLATE				
<u>CONDITION</u>	<u>LOCATION 1</u>	<u>LOCATION 2</u>	<u>SEVERITY</u>	<u>MEASUREMENT</u>	<u>COMMENT</u>	
PACK RUST	THROUGHOUT		MINOR			
<i>BENT-6</i>	<i>24 FT 4 IN</i>	<i>REINFORCED CONCRETE</i>	<i>MULTIPLE COLUMN</i>			
BEAM CAP	REINFORCED CONCRETE	CAST-IN-PLACE	MINOR			
<u>CONDITION</u>	<u>LOCATION 1</u>	<u>LOCATION 2</u>	<u>SEVERITY</u>	<u>MEASUREMENT</u>	<u>COMMENT</u>	
DELAMINATION	THROUGHOUT		MINOR			
HORIZONTAL CRACKS	THROUGHOUT		MINOR			
SEALED	BEAM CAP		ASPHALTICBASE			
COLUMN	REINFORCED CONCRETE	CAST-IN-PLACE				
<u>CONDITION</u>	<u>LOCATION 1</u>	<u>LOCATION 2</u>	<u>SEVERITY</u>	<u>MEASUREMENT</u>	<u>COMMENT</u>	
FOOTING	REINFORCED CONCRETE	SPREAD				
<u>CONDITION</u>	<u>LOCATION 1</u>	<u>LOCATION 2</u>	<u>SEVERITY</u>	<u>MEASUREMENT</u>	<u>COMMENT</u>	
FIXED BEARING	STEEL	FLAT PLATE				
<u>CONDITION</u>	<u>LOCATION 1</u>	<u>LOCATION 2</u>	<u>SEVERITY</u>	<u>MEASUREMENT</u>	<u>COMMENT</u>	
PACK RUST	THROUGHOUT		MODERATE			
<i>ABUTMENT-7</i>	<i>25 FT 0 IN</i>	<i>REINFORCED CONCRETE</i>	<i>OPEN CONCRETE</i>			
BACKWALL	REINFORCED CONCRETE	CAST-IN-PLACE				
<u>CONDITION</u>	<u>LOCATION 1</u>	<u>LOCATION 2</u>	<u>SEVERITY</u>	<u>MEASUREMENT</u>	<u>COMMENT</u>	
BEAM CAP	REINFORCED CONCRETE	CAST-IN-PLACE				
<u>CONDITION</u>	<u>LOCATION 1</u>	<u>LOCATION 2</u>	<u>SEVERITY</u>	<u>MEASUREMENT</u>	<u>COMMENT</u>	
DELAMINATION	RANDOM		MINOR			
HORIZONTAL CRACKS	THROUGHOUT		MEDIUM			
VERTICAL CRACKS	RANDOM		MINOR			
COLUMN	REINFORCED CONCRETE	CAST-IN-PLACE				
<u>CONDITION</u>	<u>LOCATION 1</u>	<u>LOCATION 2</u>	<u>SEVERITY</u>	<u>MEASUREMENT</u>	<u>COMMENT</u>	
FOOTING	REINFORCED CONCRETE	SPREAD				
<u>CONDITION</u>	<u>LOCATION 1</u>	<u>LOCATION 2</u>	<u>SEVERITY</u>	<u>MEASUREMENT</u>	<u>COMMENT</u>	
STRAIGHT WINGS	REINFORCED CONCRETE	CAST-IN-PLACE				
<u>CONDITION</u>	<u>LOCATION 1</u>	<u>LOCATION 2</u>	<u>SEVERITY</u>	<u>MEASUREMENT</u>	<u>COMMENT</u>	
FIXED BEARING	STEEL	FLAT PLATE				



**Missouri Department of Transportation  
State Bridge Inspection Report**

January 02, 2024  
6:31:35AM

COUNTY: PERRY

DISTRICT: SE

CLASS: STATBR

FED-ID: 8828

BRIDGE: S0734

<u>CONDITION</u>	<u>LOCATION 1</u>	<u>LOCATION 2</u>	<u>SEVERITY</u>	<u>MEASUREMENT</u>	<u>COMMENT</u>
PACK RUST	THROUGHOUT		MODERATE		

**\*\*\*OVER/UNDER ROUTES CLEARANCE INFORMATION\*\*\***

**CLEARANCES OVER DECK**

\*\*NOTE: Vertical clearances for permitting purposes are taken as 2 inches less than the actual field measured clearance.

<u>VERTICAL CLEARANCE TYPE**</u>	<u>VALUE</u>	<u>DIRECTION</u>	<u>DATE</u>	<u>COMMENT</u>
----------------------------------	--------------	------------------	-------------	----------------

**CLEARANCES UNDER BRIDGE**

\*\*NOTE: Vertical clearances for permitting purposes are taken as 2 inches less than the actual field measured clearance.

<u>RECORD #</u>	<u>ROUTE</u>	<u># LANES</u>	<u>DIRECTION OF TRAFFIC</u>	<u>RIGHT LATERAL CLEARANCE</u>	<u>LEFT LATERAL CLEARANCE</u>	<u>UR-ID</u>
<u>VERTICAL CLEARANCE TYPE**</u>	<u>VALUE</u>	<u>DIRECTION</u>	<u>DATE</u>	<u>COMMENT</u>		

**\*\*\*STRUCTURE PAINT INFORMATION\*\*\***

CONDITION: FAIR      RUST AMOUNT : 5=3.0% OF SURFACE RUSTED      STEEL TONS : 42

<u>ORIGINAL PAINT</u>	<u>CONTRACT REPAINT</u>	<u>DEPARTMENT REPAINT</u>
PAINT TYPE :	PAINT TYPE : C SYSTEM	PAINT TYPE :
NAME :	NAME : INORGANIC ZINC/VINYL	NAME :
PAINT COLOR :	PAINT COLOR : ALUMINUM	PAINT COLOR :
PAINT YEAR :	PAINT YEAR : 1997	PAINT YEAR :
MILS :	MILS : 8	MILS :
		MANUFACTURE :
		SURFACE PREP :

**\*\*\*REQUESTED WORK ITEMS\*\*\***

**GENERAL WORK COMMENTS:**

<u>RESPONSIBILITY</u>	<u>LOCATION</u>	<u>ITEM</u>	<u>CATEGORY</u>	<u>PRIORITY</u>	<u>DATE</u>	<u>WORK ITEM COMMENT</u>
DISTRICT SPECIAL	BENT JOINT	REPAIR DECK JOINTS W/CONC	DECK	2	10/26/2022	

**\*\*\*UTILITY ATTACHMENTS\*\*\***

Design\_No = S0734



**Missouri Department of Transportation  
State Bridge Inspection Report**

January 02, 2024  
6:31:35AM

COUNTY: PERRY

DISTRICT: SE

CLASS: STATBR

FED-ID: 8828

BRIDGE: S0734

*UTILITY                      OWNER                      METHOD                      MEASUREMENT TYPE                      VALUE                      NUMBER                      UTILITY ATTACHMENT COMMENT*

**\*\*\*PROGRAM NOTES INFORMATION\*\*\***

<u>YEAR</u>	<u>PROJECT #</u>	<u>MONTH LET</u>	<u>YEAR LET</u>	<u>ITEMS</u>	<u>COMMENT</u>
2025	9S3670	0	2025	REPLACE BRIDGE	

**\*\*\*COMPUTER GENERATED RATINGS AND DEFICIENCY ITEMS\*\*\***

NOTE: The items listed in this section are updated whenever computer edits are ran on a structure after the inspection updates have been entered in to TMS.

<u>Rated Item</u>	<u>Rating</u>	<u>Rating Date</u>
[Item 67] Structure Evaluation Rating:	2-BASICALLY INTOLRBLE REQ	12/7/2023
[Item 68] Deck Geometry Rating:	2-BASICALLY INTOLRBLE REQ	1/5/2009
[Item 69] Underclearance:	N-NOT APPLICABLE	5/18/2001
Sufficiency Rating:	2.0%	10/28/2022
Deficiency:	STRUCTURAL	4/2/2003
Funding Eligibility:	FULL	----
Estimated New Structure Length:	253 FT.	----
Estimated Structure Cost:	\$1,467,147	----
Estimated Total Project Cost:	\$2,200,721	----
Year of Cost Estimate:	2023	----

NOTE: The above structure length and cost estimates are computer generated using algorithms in the TMS system. These algorithms are generalized to use NBI items to come up with a new structure length and width to calculate a new area which is taken times a representative cost per square foot. The actual structure size and cost may vary significantly from these numbers once site specific engineering is done.

**\*\*\*ADVANCED SIGN INFORMATION\*\*\***

<u>SIGN #</u>	<u>SIGN TYPE</u>	<u>PROBLEM</u>	<u>PROBLEM DIRECTION</u>
1			

**\*\*\*OUTFALL INSPECTION INFORMATION\*\*\***

<b># OUTFALLS:</b>	<b>INSPECTOR:</b>
<b>STATUS:</b>	<b>DATE:</b>
<b>NOTES:</b>	



**Missouri Department of Transportation  
Bridge Inventory and Inspection System  
Structural Inventory & Appraisal Sheet**

January 2, 2024  
6:29:36am

COUNTY : PERRY	BRIDGE : S0734	REVIEW STATUS : APPROVED	NBI STATUS : T
RECORD TYPE : ROUTE CARRIED 'ON' STRUCT		RUN DATE : 12/7/2023	SUBMITTAL YEAR : 2023

GENERAL STRUCTURE INFORMATION	ROUTE DESIGNATION INFORMATION
1 State MISSOURI	5A Record Type ROUTE CARRIED 'ON' STRUCT
2 District SE	5B Route Signing Prefix MO
3 County PERRY	5C Designated Level of Service MAINLINE
8 Federal ID No. 8828	5D Route Number 0000T
27 Year Built 1933	5E Directional Suffix NOT APPLICABLE
106 Year Reconstructed 0	7 Facility Carried RT T E
42A Type of Service On HIGHWAY	12 Base Hwy. Network NO
21 Structure Maintenance STATE HIGHWAY AGENCY	13A LRS Inventory Route No.
22 Structure Owner STATE HIGHWAY AGENCY	13B Subroute No.
33 Br. Median Code NO MEDIAN	20 Toll Status ON FREE ROAD
37 Historical Significance NOT ELIGIBLE FOR NR OF HP	26 Functional Classification 07-RURAL MAJOR COLLECTOR
101 Parallel Struc Desg NONE EXISTS	28A Lanes on Structure 02
103 Temporary Structure NOT TEMPORARY	100 STRAHNET Designation RTE NOT A DEFENSE HWY
112 NBIS Bridge Length YES	104 National Highway System NOT ON NHS
	105 Federal Lands Highway NOT APPLICABLE
	110 Designated Nat. Network NO

STRUCTURE LOCATION INFORMATION	STRUCTURE TRAFFIC INFORMATION
4 Place ST. MARYS	29 AADT 1248
Code 65036	30 AADT Year 2022
9 Location S 36 T 35 N R 9 E	102 Direction of Traffic 2-WAY TRAFFIC
11 Milepoint 20.13 miles	109 AADT Truck Percent 11%
16 Latitude 37 D 41 M 17 S	114 Future AADT 1747
17 Longitude 89 D 59 M 1 S	115 Future AADT Year 2042

UNDERRECORD INFORMATION	STRUCTURE GEOMETRIC INFORMATION
6 Features Intersected SALINE CR	10 Inventory Rte. Vert. Clear 99 Ft. 99 In.
42B Type of Service Under WATERWAY	19 By pass Detour Length 57.50 miles
28B Lanes Under Structure 00	32 Approach Roadway Width 21 Ft. 12 In.
54A Vert. Clearance Ref. N/A	34 Skew 0.00 Degrees
54B Vert. Clearance 0 Ft. 0 In.	35 Struct. Flared NO
55A Rt. Lat Clear Ref. N/A	47 Total Horiz. Clear 23 Ft. 11 In.
55B Rt. Lat Clearance 0 Ft. 0 In.	48 Maximum Span Length 49 Ft. 3 In.
56 Left Lat Clearance 0 Ft. 0 In.	49 Structure Length 220 Ft. 2 In.
38 Navigation Control PERMIT NOT REQ	50A Left Curb/Sidewalk Width 0 Ft. 0 In.
39 Nav Vertical Clear 0 Ft. 0 In.	50B Right Curb/Sidewalk Width 0 Ft. 0 In.
40 Nav Horizontal Clear 0 Ft. 0 In.	51 Curb to Curb Br. Width 20 Ft. 0 In.
111 Nav. Pier Protection	52 Deck Width (Out-Out) 24 Ft. 11 In.
116 Nav. Cl. Vert. Clear	53 Vert. Clearance Over Deck 99 Ft. 99 In.

Design\_No = S0734 and Inventory\_Appraisal\_Submittal\_Year = 2023





**Missouri Department of Transportation  
Bridge Inventory and Inspection System  
Structural Inventory & Appraisal Sheet**

January 2, 2024  
6:29:36am

<b>COUNTY :</b> PERRY	<b>BRIDGE :</b> S0734	<b>REVIEW STATUS :</b> APPROVED	<b>NBI STATUS :</b> T
<b>RECORD TYPE :</b> ROUTE CARRIED 'ON' STRUCT		<b>RUN DATE :</b> 12/7/2023	<b>SUBMITTAL YEAR :</b> 2023

LOAD RATING AND POSTING INFORMATION		
31	Design Load	H 10
41	Structure Status	POSTED FOR LOAD
63	Oper. Rating Meth.	LOAD FACTOR
64	Operating Rating	17 Tons.
65	Inventory Rating Meth	LOAD FACTOR
66	Inventory Rating	10 Tons.
70	Bridge Posting Code	>39.9% BELOW

MATERIAL/CONSTRUCTION INFORMATION		
43A	Main Struc. Mat type	STEEL
43B	Main struc Constr. Type	STRINGER/MULTIBEAM - GRD
45	# of Main Spans	6
44A	Appr Struc. Mat type	000
44B	Appr Struc. Cnstr. type	000
46	# of Approach Span	0
107	Deck Mat/Constr.	1 CONCRETE CIP
108A	Wear Surf Mat/Constr.	6 BITUMINOUS
108B	Membrane Mat/Constr.	0 NONE
108C	Deck Protect Mat/Constr.	0 NONE

PROPOSED IMPROVEMENT INFORMATION		
Sufficiency Rating	2.0	Percent
Deficiency Rating	STRUCTURAL	
Funding Eligibility	FULL	
75A	Proposed Work	REPLACEMENT SUBSTND LOAD
75B	Work Done By	Contract
76	New Struc Length	252 Ft. 7 In.
94	Struc Improve Cost	\$ 1,467,000
95	Roadway Improve Cost	\$ 147,000
96	Total Project Cost	\$ 2,201,000
97	Year of Cost Estimates	2023

CONDITION RATING INFORMATION		
58	Deck Cond. Rating	3
59	Superstructure Cond. Rating	3
60	Substructure Cond. Rating	4
61	Channel /Channel Protection Cond. Rating	5
62	Culvert Cond. Rating	N

APPRAISAL RATING INFORMATION		
36A	Br. Rail App. Rating	DOES NOT MEET ACCEPT STND
36B	Transition Rail App. Rating	DOES NOT MEET ACCEPT STND
36C	Approach Rail App. Rating	DOES NOT MEET ACCEPT STND
36D	Rail End Treat. App. Rating	DOES NOT MEET ACCEPT STND
67	Struc Eval App. Rating	2
68	Deck Geometry App. Rating	2
69	Underclearance App. Rating	N
71	Waterway Adeq. App. Rating	5
72	Approach Road App. Rating	6
113	Scour Assess App. Rating	8

INSPECTION INFORMATION			
90	Gen. Insp Date	10 / 23	
91	Gen. Insp. Frequency	12	Months
92A	Frac. Critical Inspection	N	Months
93A	Frac. Critical Insp. Date		
92B	Underwater Inspection	N	Months
93B	Underwater Insp. Date		
92C	Special Inspection	N	Months
93C	Special Inspection Date		

APPROVED POSTING INFORMATION				
Approved Posting Category	S-16			
	Ton1	Ton2	Ton3	
Tonnage Values for Posting Sign	14	19	33	
General Text for Posting Sign	TRKS OVR 14 TNS 15MPH ON BR EXCPT SNGLE UNIT TRKS WT LIMIT 19 TNS&ALL OTHR TRKS WT LIMIT 33 TNS.			

BORDER BRIDGE INFORMATION		
98	Neighboring State Code	
98B	Neighboring State % Respon	
99	Neighboring State Struc. No.	

FIELD POSTING INFORMATION				
Field Posting Category	S-16			
	Ton1	Ton2	Ton3	
Tonnage Values for Posting Sign	14	19	33	
General Text for Posting Sign	TRKS OVR 14 TNS 15MPH ON BR EXCPT SNGLE UNIT TRKS WT LIMIT 19 TNS&ALL OTHR TRKS WT LIMIT 33 TNS.			

Design\_No = S0734 and Inventory\_Appraisal\_Submittal\_Year = 2023