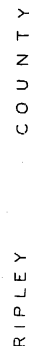


FEDERAL AID PROJECT
BUTLER COUNTY

PLAN 1 IN. = 100 FT.
SCALES. PROFILE. HOR. 1 IN. = 100 FT. VERT. 1 IN. = 10 FT.
CROSS-SECTIONS 1 IN. = 5 FT.

Proj. FA 58-B(3)
Proj. FA 58-C1(2)
Proj. FA 58-C2(2)



CONVENTIONAL SIGNS	
'STATE AND NATIONAL LINE	LEVEL
CROSS-ING LINES	TURNING ROAD
CITY, VILLAGE OR BORG	DRIF INLET
TOWNSHIP LINE	TROWLEY POLE
SECTION LINE	TOWER POLE
GRANT LINE	TURNPIKE OR TELEGRAPH POLE
FENCE LINE	MARSH
RAILROAD	HEDGE
UNFENCED PROPERTY	
RIGHT OF WAY LINE	GROUND ELEVATION
TRAVELED WAY	
RAILROADS	GRADE ELEVATION
RETYNING WALL	SURFACE LINE
BASE OF SURVEY LINE	GRADE LINE

MISSOURI STATE
HIGHWAY COMMISSION

RECOMMEND FOR APPROVAL

DISTRICT ENGINEER
PUBLIC ROADS ADMINISTRATION
FEDERAL WORKS AGENCY

APPROVED

COMMISSIONER
PUBLIC ROADS ADMINISTRATION
FEDERAL WORKS AGENCY

LOCATION *Route 14 South to Arkansas State Line*TYPE *BRIDGES*

MISSOURI STATE HIGHWAY COMMISSION

FINAL SUMMARY OF QUANTITIES

FED. ROAD DIST. No.	STATE	PROJECT	FISCAL YEAR	SHEET No.	TOTAL SHEETS
5	MO.	FA 35-01(3)		RA	
DIST. No.	COUNTY	SECTION	SECTION	SECTION	SECTION
10	BUTLER			67	

GENERAL SUMMARY

24" GUTTER
AT BRIDGE ENDS

Station	Length	Unit
700+100	20	Feet
700+120	20	Feet
700+140	20	Feet
700+160	20	Feet
700+180	20	Feet
700+200	20	Feet
700+220	20	Feet
700+240	20	Feet
700+260	20	Feet
700+280	20	Feet
700+300	20	Feet
700+320	20	Feet
700+340	20	Feet
700+360	20	Feet
700+380	20	Feet
700+400	20	Feet
700+420	20	Feet
700+440	20	Feet
700+460	20	Feet
700+480	20	Feet
700+500	20	Feet
700+520	20	Feet
700+540	20	Feet
700+560	20	Feet
700+580	20	Feet
700+600	20	Feet
700+620	20	Feet
700+640	20	Feet
700+660	20	Feet
700+680	20	Feet
700+700	20	Feet
700+720	20	Feet
700+740	20	Feet
700+760	20	Feet
700+780	20	Feet
700+800	20	Feet
700+820	20	Feet
700+840	20	Feet
700+860	20	Feet
700+880	20	Feet
700+900	20	Feet
700+920	20	Feet
700+940	20	Feet
700+960	20	Feet
700+980	20	Feet
700+1000	20	Feet
700+1020	20	Feet
700+1040	20	Feet
700+1060	20	Feet
700+1080	20	Feet
700+1100	20	Feet
700+1120	20	Feet
700+1140	20	Feet
700+1160	20	Feet
700+1180	20	Feet
700+1200	20	Feet
700+1220	20	Feet
700+1240	20	Feet
700+1260	20	Feet
700+1280	20	Feet
700+1300	20	Feet
700+1320	20	Feet
700+1340	20	Feet
700+1360	20	Feet
700+1380	20	Feet
700+1400	20	Feet
700+1420	20	Feet
700+1440	20	Feet
700+1460	20	Feet
700+1480	20	Feet
700+1500	20	Feet
700+1520	20	Feet
700+1540	20	Feet
700+1560	20	Feet
700+1580	20	Feet
700+1600	20	Feet
700+1620	20	Feet
700+1640	20	Feet
700+1660	20	Feet
700+1680	20	Feet
700+1700	20	Feet
700+1720	20	Feet
700+1740	20	Feet
700+1760	20	Feet
700+1780	20	Feet
700+1800	20	Feet
700+1820	20	Feet
700+1840	20	Feet
700+1860	20	Feet
700+1880	20	Feet
700+1900	20	Feet
700+1920	20	Feet
700+1940	20	Feet
700+1960	20	Feet
700+1980	20	Feet
700+2000	20	Feet
700+2020	20	Feet
700+2040	20	Feet
700+2060	20	Feet
700+2080	20	Feet
700+2100	20	Feet
700+2120	20	Feet
700+2140	20	Feet
700+2160	20	Feet
700+2180	20	Feet
700+2200	20	Feet
700+2220	20	Feet
700+2240	20	Feet
700+2260	20	Feet
700+2280	20	Feet
700+2300	20	Feet
700+2320	20	Feet
700+2340	20	Feet
700+2360	20	Feet
700+2380	20	Feet
700+2400	20	Feet
700+2420	20	Feet
700+2440	20	Feet
700+2460	20	Feet
700+2480	20	Feet
700+2500	20	Feet
700+2520	20	Feet
700+2540	20	Feet
700+2560	20	Feet
700+2580	20	Feet
700+2600	20	Feet
700+2620	20	Feet
700+2640	20	Feet
700+2660	20	Feet
700+2680	20	Feet
700+2700	20	Feet
700+2720	20	Feet
700+2740	20	Feet
700+2760	20	Feet
700+2780	20	Feet
700+2800	20	Feet
700+2820	20	Feet
700+2840	20	Feet
700+2860	20	Feet
700+2880	20	Feet
700+2900	20	Feet
700+2920	20	Feet
700+2940	20	Feet
700+2960	20	Feet
700+2980	20	Feet
700+3000	20	Feet
700+3020	20	Feet
700+3040	20	Feet
700+3060	20	Feet
700+3080	20	Feet
700+3100	20	Feet
700+3120	20	Feet
700+3140	20	Feet
700+3160	20	Feet
700+3180	20	Feet
700+3200	20	Feet
700+3220	20	Feet
700+3240	20	Feet
700+3260	20	Feet
700+3280	20	Feet
700+3300	20	Feet
700+3320	20	Feet
700+3340	20	Feet
700+3360	20	Feet
700+3380	20	Feet
700+3400	20	Feet
700+3420	20	Feet
700+3440	20	Feet
700+3460	20	Feet
700+3480	20	Feet
700+3500	20	Feet
700+3520	20	Feet
700+3540	20	Feet
700+3560	20	Feet
700+3580	20	Feet
700+3600	20	Feet
700+3620	20	Feet
700+3640	20	Feet
700+3660	20	Feet
700+3680	20	Feet
700+3700	20	Feet
700+3720	20	Feet
700+3740	20	Feet
700+3760	20	Feet
700+3780	20	Feet
700+3800	20	Feet
700+3820	20	Feet
700+3840	20	Feet
700+3860	20	Feet
700+3880	20	Feet
700+3900	20	Feet
700+3920	20	Feet
700+3940	20	Feet
700+3960	20	Feet
700+3980	20	Feet
700+4000	20	Feet
700+4020	20	Feet
700+4040	20	Feet
700+4060	20	Feet
700+4080	20	Feet
700+4100	20	Feet
700+4120	20	Feet
700+4140	20	Feet
700+4160	20	Feet
700+4180	20	Feet
700+4200	20	Feet
700+4220	20	Feet
700+4240	20	Feet
700+4260	20	Feet
700+4280	20	Feet
700+4300	20	Feet
700+4320	20	Feet
700+4340	20	Feet
700+4360	20	Feet
700+4380	20	Feet
700+4400	20	Feet
700+4420	20	Feet
700+4440	20	Feet
700+4460	20	Feet
700+4480	20	Feet
700+4500	20	Feet
700+4520	20	Feet
700+4540	20	Feet
700+4560	20	Feet
700+4580	20	Feet
700+4600	20	Feet
700+4620	20	Feet
700+4640	20	Feet
700+4660	20	Feet
700+4680	20	Feet
700+4700	20	Feet
700+4720	20	Feet
700+4740	20	Feet
700+4760	20	Feet
700+4780	20	Feet
700+4800	20	Feet
700+4820	20	Feet
700+4840	20	Feet
700+4860	20	Feet
700+4880	20	Feet
700+4900	20	Feet
700+4920	20	Feet
700+4940	20	Feet
700+4960	20	Feet
700+4980	20	Feet
700+5000	20	Feet
700+5020	20	Feet
700+5040	20	Feet
700+5060	20	Feet
700+5080	20	Feet
700+5100	20	Feet
700+5120	20	Feet
700+5140	20	Feet
700+5160	20	Feet
700+5180	20	Feet
700+5200	20	Feet
700+5220	20	Feet
700+5240	20	Feet
700+5260	20	Feet
700+5280	20	Feet
700+5300	20	Feet
700+5320	20	Feet
700+5340	20	Feet
700+5360	20	Feet
700+5380	20	Feet
700+5400	20	Feet
700+5420	20	Feet
700+5440	20	Feet
700+5460	20	Feet
700+5480	20	Feet
700+5500	20	Feet
700+5520	20	Feet
700+5540	20	Feet
700+5560	20	Feet
700+5580	20	Feet
700+5600	20	Feet
700+5620	20	Feet
700+5640	20	Feet
700+5660	20	Feet
700+5680	20	Feet
700+5700	20	Feet
700+5720	20	Feet
700+5740	20	Feet
700+5760	20	Feet
700+5780	20	Feet
700+5800	20	Feet
700+5820	20	Feet
700+5840	20	Feet
700+5860	20	Feet
700+5880	20	Feet
700+5900	20	Feet
700+5920	20	Feet
700+5940	20	Feet
700+5960	20	Feet
700+5980	20	Feet
700+6000	20	Feet
700+6020	20	Feet
700+6040	20	Feet
700+6060	20	Feet
700+6080	20	Feet
700+6100	20	Feet
700+6120	20	Feet
700+6140	20	Feet
700+6160	20	Feet
700+6180	20	Feet
700+6200	20	Feet
700+6220	20	Feet
700+6240	20	Feet
700+6260	20	Feet
700+6280	20	Feet
700+6300	20	Feet
700+6320	20	Feet
700+6340	20	Feet
700+6360	20	Feet
700+6380	20	Feet
700+6400	20	Feet
700+6420	20	Feet
700+6440	20	Feet
700+6460	20	Feet
700+6480	20	Feet
700+6500	20	Feet
700+6520	20	Feet
700+6540	20	Feet
700+6560	20	Feet
700+6580	20	Feet
700+6600	20	Feet
700+6620	20	Feet
700+6640	20	Feet
700+6660	20	Feet
700+6680	20	Feet
700+6700	20	Feet
700+6720	20	Feet
700+6740	20	Feet
700+6760	20	Feet
700+6780	20	Feet
700+6800	20	Feet
700+6820	20	Feet
700+6840	20	Feet
700+6860	20	Feet
700+6880	20	Feet
700+6900	20	Feet
700+6920	20	Feet
700+6940	20	Feet
700+6960	20	Feet
700+6980	20	Feet
700+7000	20	Feet
700+7020	20	Feet
700+7040	20	Feet
700+7060	20	Feet
700+7080	20	Feet
700+7100	20	Feet
700+7120	20	Feet
700+7140	20	Feet
700+7160	20	Feet
700+7180	20	Feet
700+7200	20	Feet
700+7220	20	Feet
700+7240	20	Feet
700+7260	20	Feet
700+7280	20	Feet
700+7300	20	Feet
700+7320	20	Feet
700+7340	20	Feet
700+7360	20	Feet
700+7380	20	Feet
700+7400	20	Feet
700+7420	20	Feet
700+7440	20	Feet
700+7460	20	Feet
700+7480	20	Feet
700+7500	20	Feet
700+7520	20	Feet
700+7540	20	Feet
700+7560	20	Feet
700+7580	20	Feet
700+7600	20	Feet
700+7620	20	Feet
700+7640	20	Feet
700+7660	20	Feet
700+7680	20	Feet
700+7700	20	Feet
700+7720	20	Feet
700+7740	20	Feet
700+7760	20	Feet
700+7780	20	Feet
700+7800	20	Feet
700+7820	20	Feet
700+7840	20	Feet
700+7860	20	Feet
700+7880	20	Feet
700+7900	20	Feet
700+7920	20	Feet
700+7940	20	Feet
700+7960	20	Feet
700+7980	20	Feet
700+8000	20	Feet
700+8020	20	Feet
700+8040	20	Feet
700+8060	20	Feet
700+8080	20	Feet
7		

D. E. RATCLIFF

JULIA LAWS, ESTATE

N.E. 1/4 - N.E. 1/4
SEC. 4

MALCOM TURNER

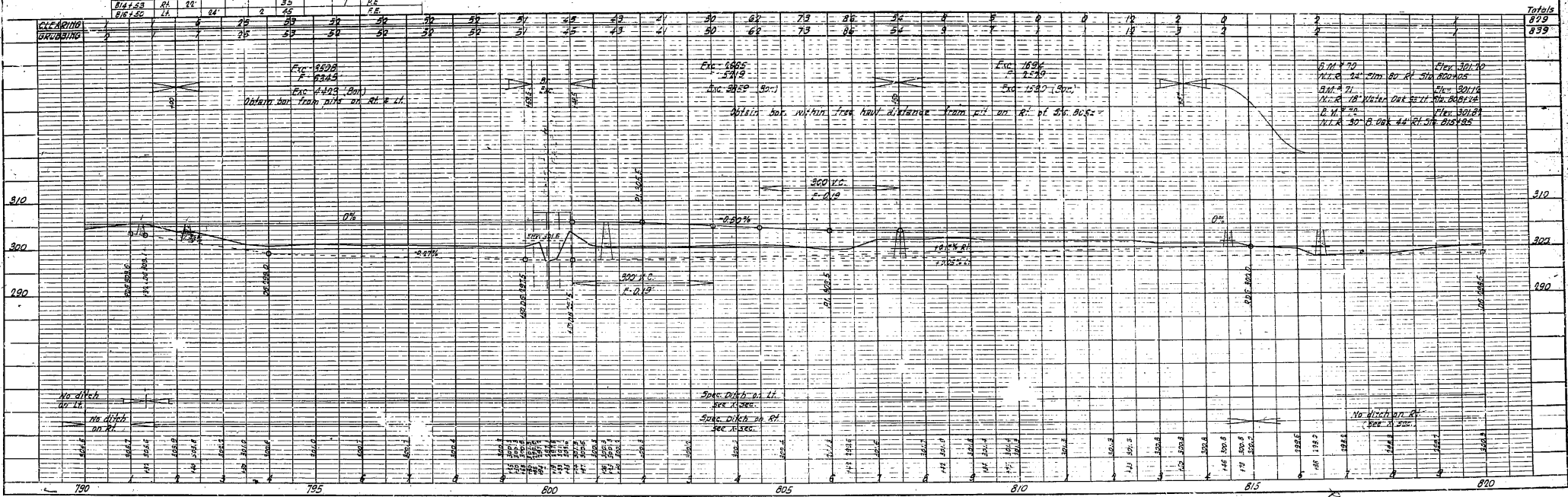
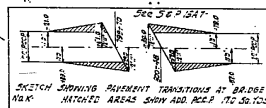
S.E. 1/4 - N.E. 1/4
SEC. 4

N.E.1/4 - S.E.1/4
SEC. 4

JOE CRAIG

ENTRANCE					APPROACHES				
Station	Size	15'	24'	30'	Excav.	Fill	1/3 Excav.	Shovel Backfill	Remarks
791+95	44	No	Pipe		4			6	P.E.
794+95	44				2	40		7	P.E.
801+10	44			38"		110			P.E.
807+50	44	See	Relief	Apr.	2	55			P.E.
814+53	44	22"				35		7	P.E.
					0	45			P.E.

RELAI D		PIPE (24" C.I.P.)	
Station	Side	Line	Remarks
807+50	Lt.	30	From 1123+22 E 886+82



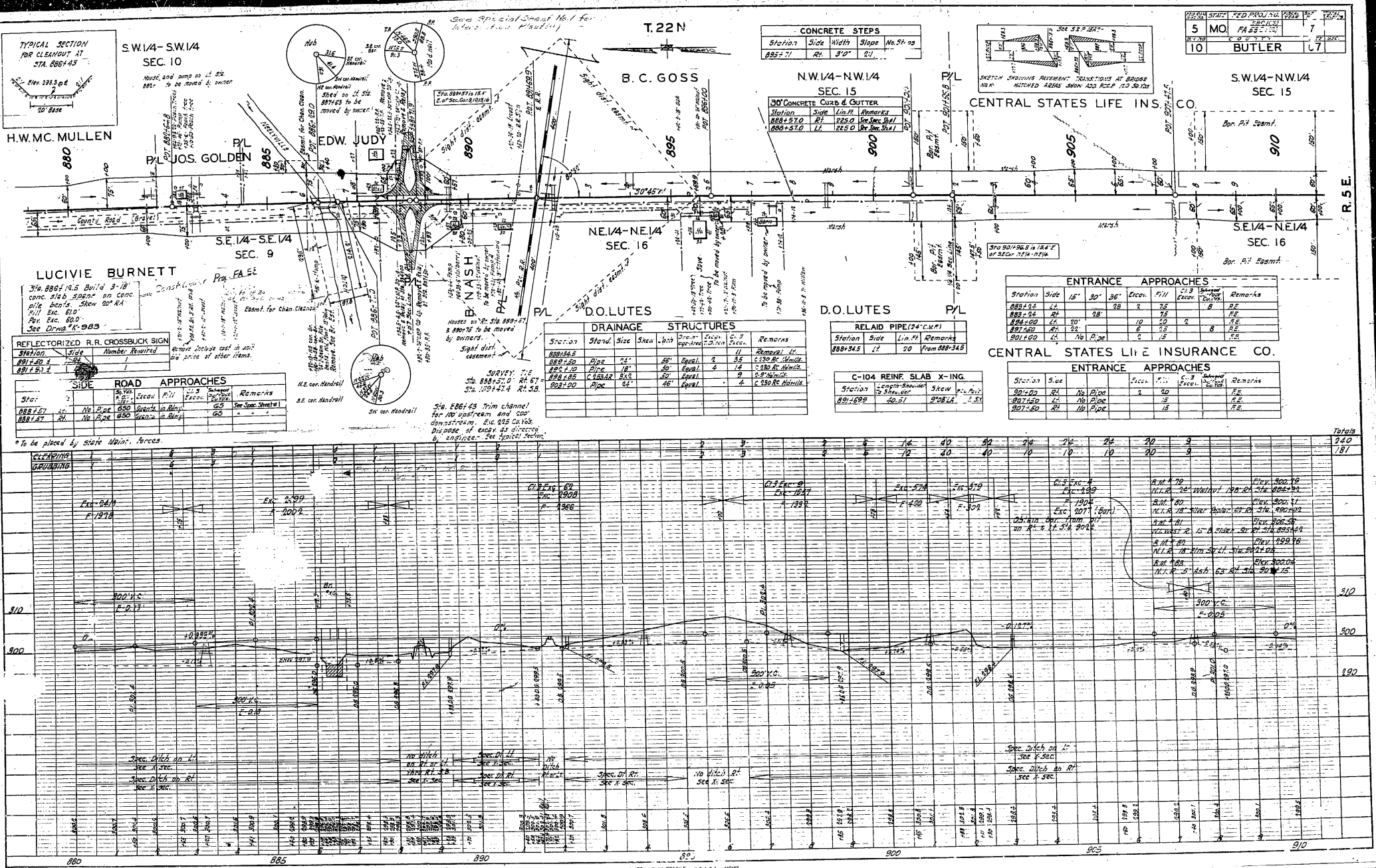
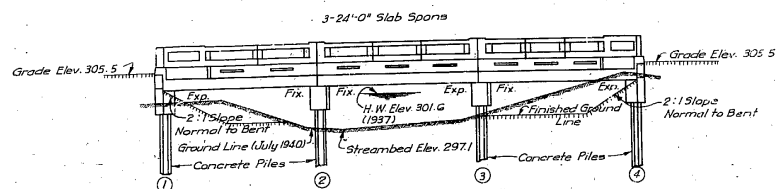


PLATE 1-14-15 PROFILE 1-14-15

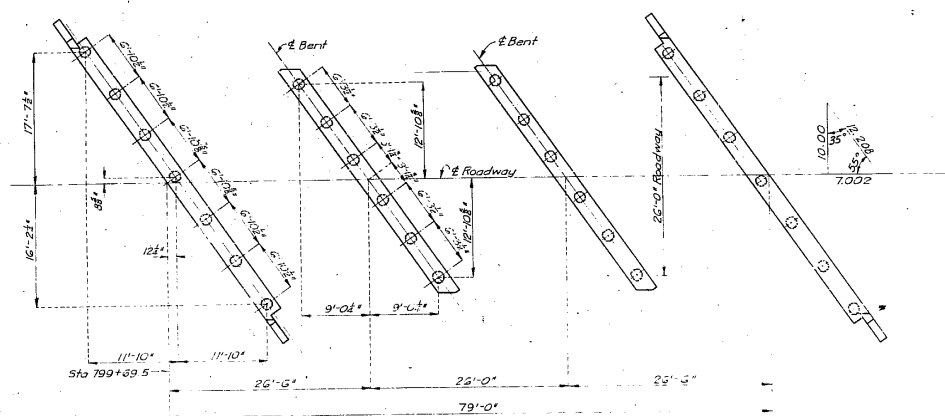
MISSOURI STATE HIGHWAY DEPARTMENT

FED. ROAD DIST. NO.	STATE	FED. AID PROJ. NO.	FISCAL YEAR	SHEET NO.	TOTAL SHEETS
5	MO.	FA58-C(3)	19		

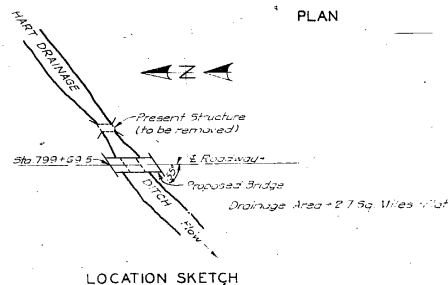


GENERAL ELEVATION

Note: All piling shall be reinforced concrete and shall conform with details and notes shown on Std. P3. All piling shall be driven to sustain a load of 30 tons per pile and with tips to at least Elev. 282.0.



PLAN



LOCATION SKETCH

GENERAL NOTES:

Design Specifications 4-4.10.1-1935
Loading 1935
Bents and abutments shall be of
Concrete Class 19-4000
Abutment shall be Class 19-4000

COMPLETE BILL OF REINFORCING STEEL

No.	Size	Length	Mark	Location	Bending Sketches & Cutting Diagrams	No.	Size	Length	Mark	Location
Superstructure						End Bents No. 1 & No. 2				
8	3/4"	9'-0"	R1	Rail		32	3/4"	6'-9"	H1	Wing
48	3/4"	9'	R2	"		32	3/4"	24'-6"	H2	Beam
52	3/4"	8'-9"	R3	Sub Post		8	3/4"	23'-6"	H3	"
32	3/4"	4'-0"	R4	Post		6	3/4"	8'-6"	V1	Wing
464	3/4"	18"	R5	Balusters		72	3/4"	10'-9"	U1	Beam
8	3/4"	6'-6"	R6	Rail		14	3/4"	7'-6"	U2	"
8	3/4"	7'-9"	R7	"		8	3/4"	10'-9"	T1	Wing
24	3/4"	8'-9"	R8	"						
8	3/4"	7'-6"	R9	"						
12	3/4"	7'-0"	R10	Post						
12	3/4"	6'-0"	R11	"						
8	3/4"	10'-0"	R12	Rail	Interior Bents No. 2 & No. 3					
64	3/4"	2'-0"	R13	"	16	3/4"	37'-6"	G1	Beam	
5	3/4"	28'-3"	C1	Curb	4	3/4"	35'-6"	G2	"	
116	3/4"	4'-0"	C2	"	54	3/4"	10'-9"	U1	Beam	
6	3/4"	25'-9"	C3	"	16	3/4"	7'-6"	U2	"	
C	3/4"	23'-6"	C4	"						
150	1/2"	25'-9"	S1	Slab						
36	1/2"	25'-9"	S2	"						
27	1/2"	29'-6"	S3	"						
69	1/2"	31'-9"	S4	"						
6	3/4"	2'-9"	S5	"						
24	3/4"	7'-0"	S6	"						
G	3/4"	35'-3"	S7	"						

ESTIMATED QUANTITIES

Item	Superstructure	Substructure	Total
Class I Excavation for Slabs, as Cut		25	25
Class 15' Concrete (Hard) 1' Cuts	11.1		11.1
Class 19' Concrete (Hard) 1' Cuts	155.6	17.4	244.0
Reinforcing Steel	Lbs 20290	4120	24410
Concrete Piles in Place	Lin. Ft.	820	820

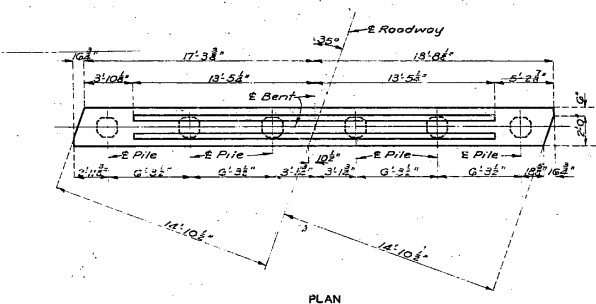
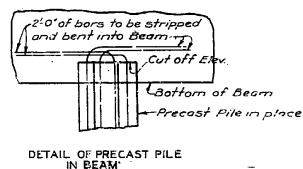
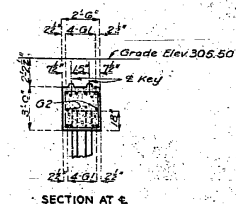
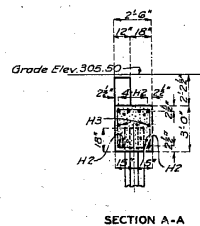
BRIDGE OVER HART DRAINAGE DITCH

STATE ROAD FROM JUNCTION ROUTE 14 SOUTH
ABOUT 2.0 MILES NORTHWEST OF NEELYVILLE
PROJECT NO FA58-C(3) (US67) STA 799+69.5

BUTLER COUNTY

STD. P3
STD. C-10R2
K-932

FED. ROAD DIST. NO.	STATE	FED. AID PROJ. NO.	FISCAL YEAR	SHEET N	TOTAL SHEETS
5	MO.	FAS-C(2) (U337)	19		

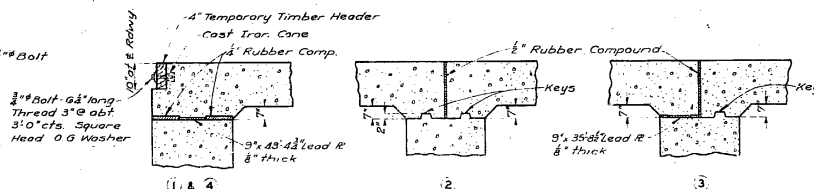


3"
2 1/2"
4"
3/4"
3/8"
3/16"

Top for 3/4" Bolt

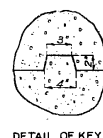
3/8" Bo
Thre
3/16" d
Head

DETAIL OF CAST IRON CONE



Note: Cost of Temporary Timber Headers complete in place and cost of lead plates shall be included in price bid for concrete

DETAILS OF BEARINGS



STATE ROAD FROM JUNCTION ROUTE 14 SOUTH
ABOUT 2.0 MILES NORTHWEST OF NEELYVILLE
PROJECT NO. EA-58-C(3)(US67) STA 75+169.5

BUTLER COUNTY

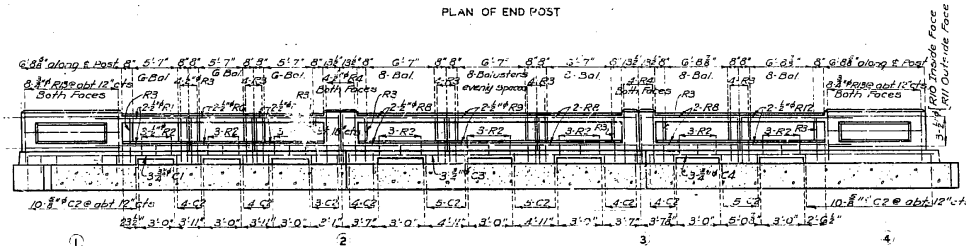
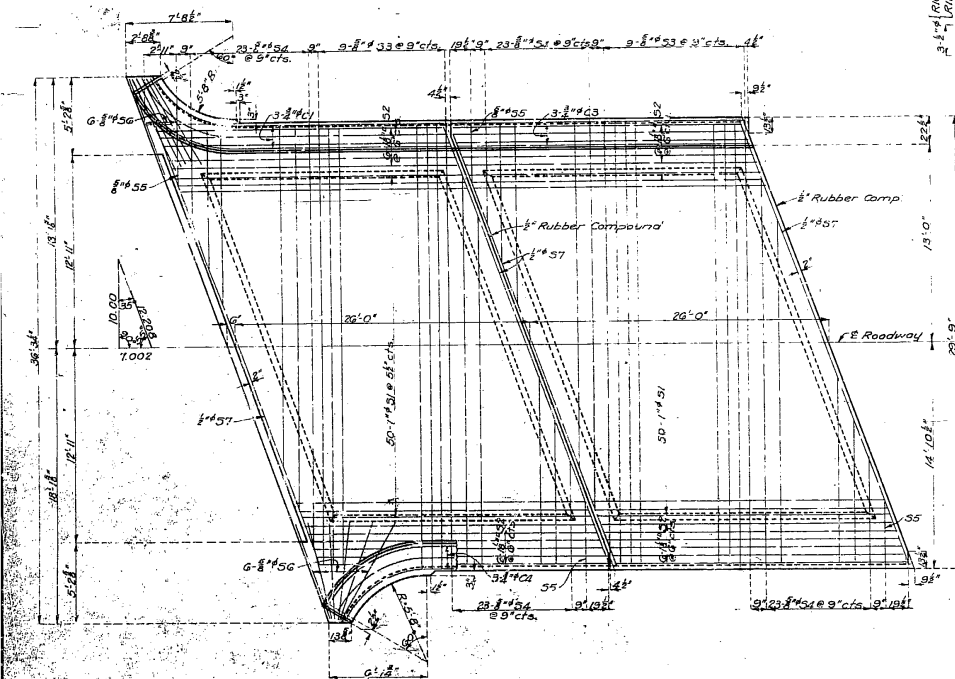
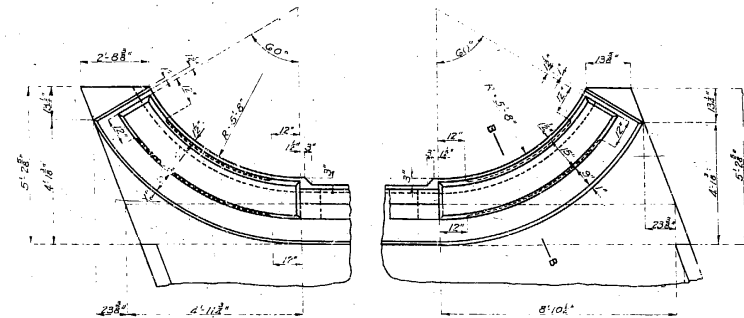
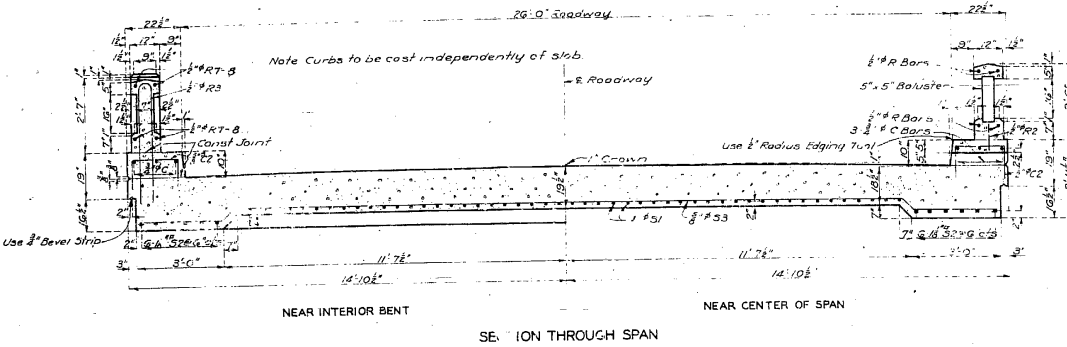
Note. This drawing is not to scale. Follow dimensions

Sheet No. 2 of 3

K-982

MISSOURI STATE HIGHWAY DEPARTMENT

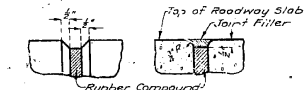
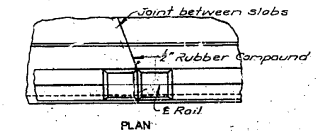
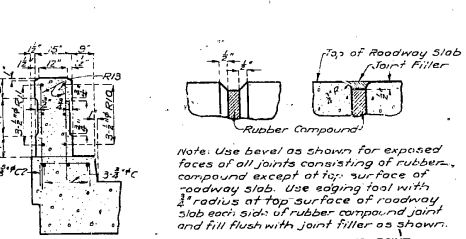
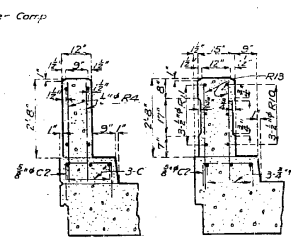
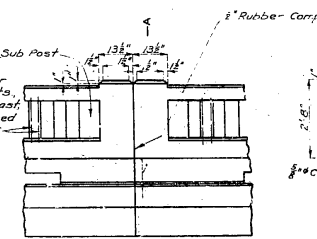
FED. ROAD DIST. NO.	STATE	FED. AID PROJ. NO.	FISCAL YEAR	SHEET NO.	TOTAL SHEETS
MO. 105-6-27		1948-C1(3)	19		



LEFT HANDRAIL SPAN 1-2
RIGHT HANDRAIL SPAN 3-4

SPAN 2-3

LEFT HANDRAIL SPAN 3-4
RIGHT HANDRAIL SPAN 1-2



BRIDGE OVER HART DRAINAGE DITCH

STATE ROAD FROM JUNCTION ROUTE 14 SOUTH
ABOUT 2.0 MILES NORTHWEST OF NEELYVILLE
PROJECT NO. FA58-C1(3) (U567) STA. 799+69.5

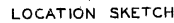
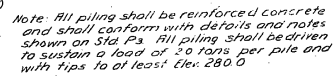
BUTLER COUNTY

K-982

Drawn Nov. 1940 by J.G.
Checked Dec. 1940 by G.W.
Note: This drawing is not to scale. Follow dimensions.

Sheet No. 3 of 3

FED. ROAD DIST. NO.	STATE	FED. AID PRG. NO.	FISCAL YEAR	S. Y NO.	TOTAL SHEET'S
5	NO	PASS-CIT- (USGT)	19		



ESTIMATED QUANTITIES			
<i>Form</i>	<i>Superstr.</i>	<i>Substruct.</i>	<i>Total</i>
<i>Class I Excavation for Structures Cu Yds</i>		<i>Ac</i>	<i>Ft</i>
<i>Class 2B Concrete (Handrail) Cu Yds</i>	<i>8'</i>		<i>42</i>
<i>Class 8B Concrete Cu Yds</i>	<i>105.5</i>	<i>11.4</i>	<i>116.9</i>
<i>Reinforcing Steel Lbs</i>	<i>13620</i>	<i>3550</i>	<i>17170</i>
<i>Concrete Piles in Place Lin. Ft</i>		<i>67'</i>	<i>820</i>

Design Specifications A.R.S.H.O. 1935
Loading H-15
Reinforcing Steel Stress 18,000 "psi"
Concrete Class "B" 900 "psi"
All concrete shall be Class "B".

B.M. # 79 Elev 366.79 V.I.R. 24" Walnut
198' Rt. Sio 884+92 M.S.L. Datum.

BRIDGE OVER NEELYVILLE DRAINAGE DITCH
STATE ROAD FROM JUNCTION ROUTE 14 SOUTH
ABOUT 0.6 MILES WEST OF NEELYVILLE
PROJECT NO. FA58-CI(3) (US67) STA. 886+12.5
BUTLER COUNTY

SUBMITTED BY *V.R. acc* DATE *12/6/40*
BRIDGE ENGINEER
APPROVED BY *C.W. Brown* DATE *12/6/40*
CHIEF ENGINEER

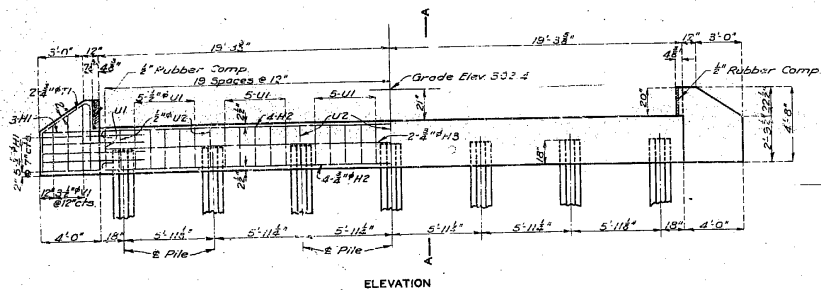
STD. P-3
STD. C-110R2
K-983

Sheet No. 1 of 3

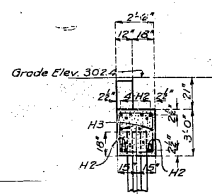
Drawn Nov. 1940 by J.G.
Traced Nov. 1940 by R.M.S.
Checked Dec. 1940 by N.W.R.

Note: This drawing is not to scale. Follow dimensions.

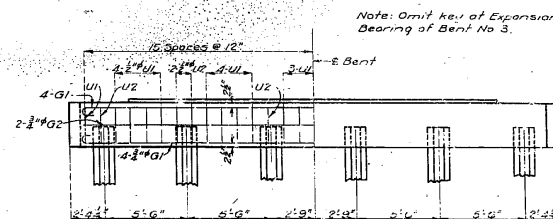
FED. ROAD DIST. NO.	STATE	FED. AID PROJ. NO.	FISCAL YEAR	SURF. NO.	TOTAL SHEET
5	MO.	FA58-CR-115371	19		



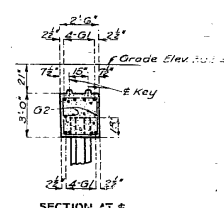
ELEVATION



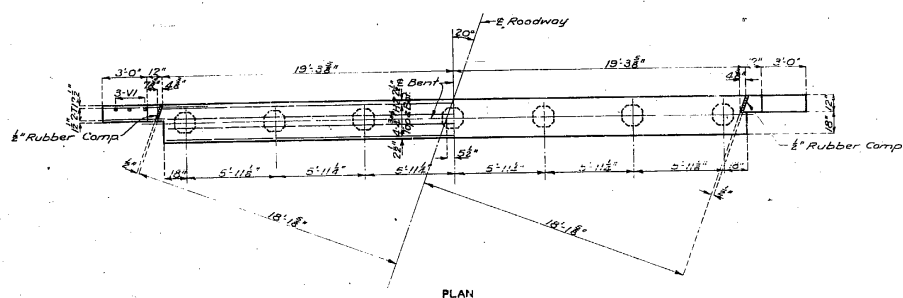
SECTION A-A



ELEVATION

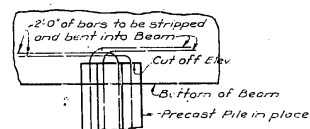


SECTION AT \$

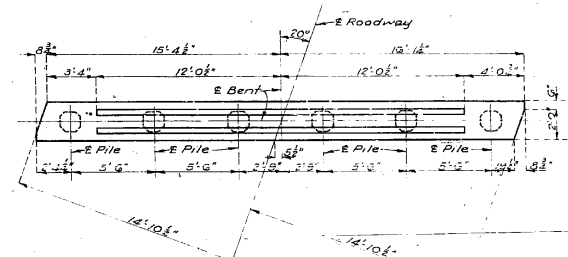


PLAN

DETAILS OF END BENTS NO. 1 & 4



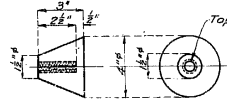
DETAIL OF PRECAST PILE
IN BEAM



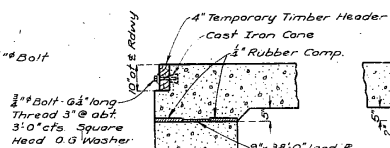
PLAN

DETAILS OF INTERIOR BENTS NO. 2 & 3

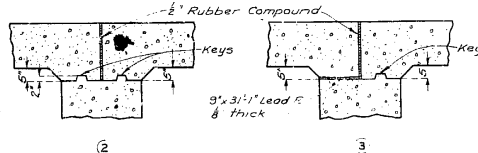
Note: An approved alternate may be substituted for cost iron as is shown.



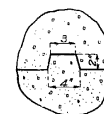
DETAIL OF CAST IRON CONE



Note: Cost of Temporary Timber Headers complete in place and cost of lead plates shall be included in price bid for concrete.



DETAILS OF BEARINGS



DETAIL OF KEY

BRIDGE OVER NEELYVILLE DRAINAGE DITCH

STATE ROAD FROM JUNCTION ROUTE 14 SOUTH
ABOUT 0.8 MILES WEST OF NEELYVILLE
PROJECT NO. FA58-C1(3) (US67) STA. 886+12.5

BUTLER:

COUNTY

Drawn Nov. 1940 by J.G.
Traced Nov. 1940 by G.W.
Checked Dec. 1940 by N.W.R.

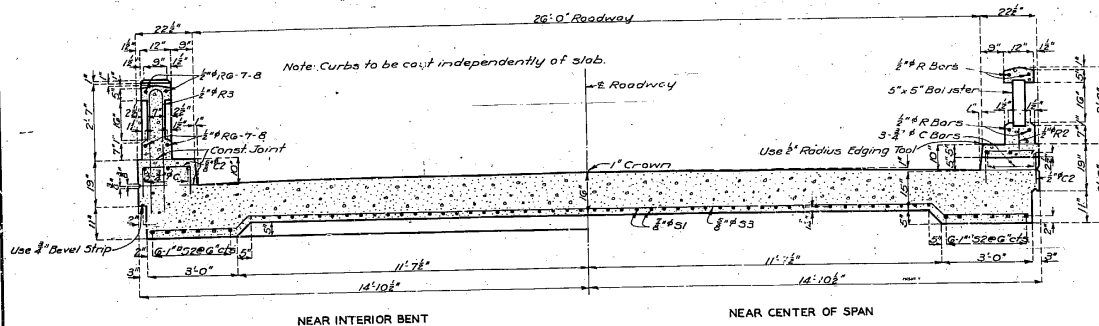
Note: This drawing is not to scale. Follow dimensions.

Sheet No. 2 of 3

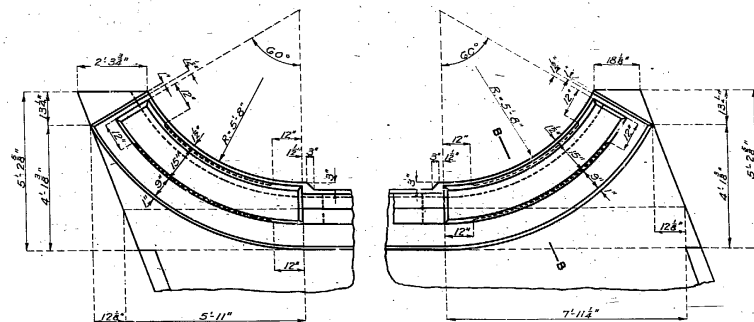
K-983

MISSOURI STATE HIGHWAY DEPARTMENT

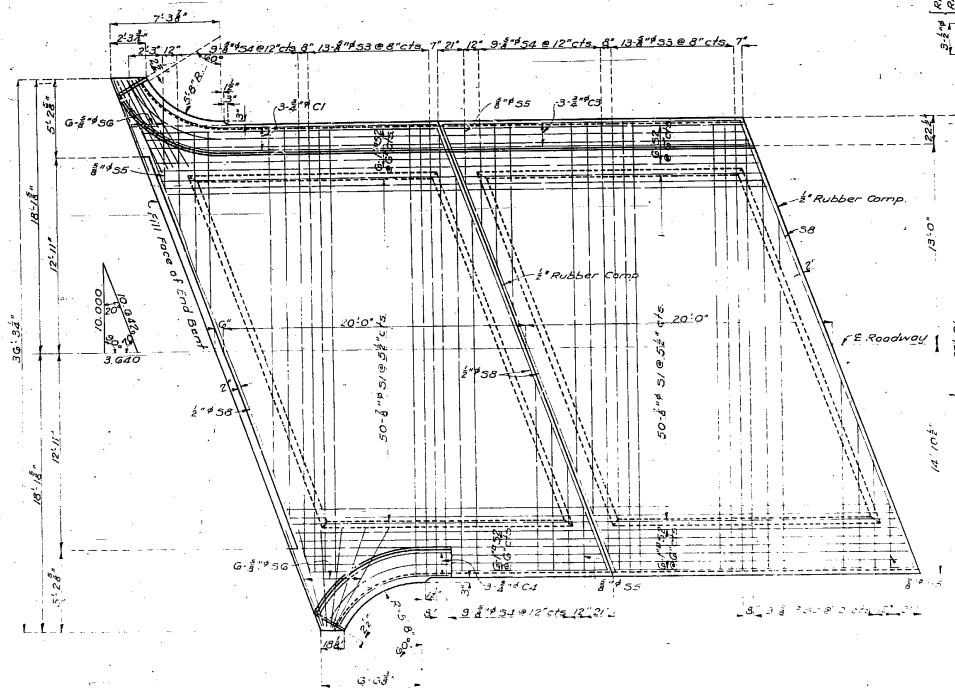
FED. ROAD DIST. NO.	STATE	FED. AID PROJ. NO.	FISCAL YEAR	SH. 12	TOTAL ECTS
5	MO.	(US57)	19		



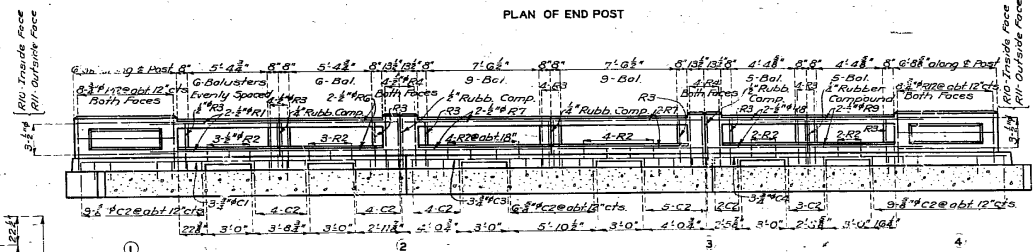
SECTION THROUGH SPAN



PLAN OF END POST



PLAN OF SLAB SHOWING REINFORCEMENT

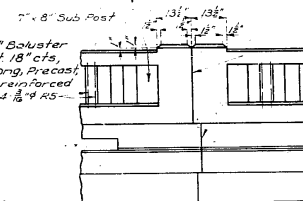


LEFT HANDRAIL SPAN 1-2
RIGHT HANDRAIL SPAN 1-2

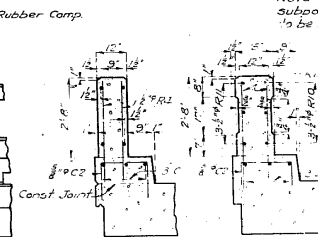
SPAN 2-3

LEFT HANDRAIL SPAN 3-4
RIGHT HANDRAIL SPAN 3-4

Note: Vertical edges of posts and subposts and bottom of top rail to be beveled 1/2\"/>

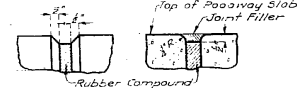


ELEVATION

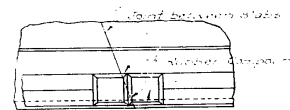


SECTION A-A

SECTION B-B



Note: Use bevel as shown for exposed faces of all joints consisting of rubber compound except at top surface of roadway. Use edging tool with 3\"/>



FLAN

BRIDGE OVER NEELYVILLE DRAINAGE DITCH

STATE ROAD FROM JUNCTION ROUTE 14 SOUTH
ABOUT 0.8 MILES WEST OF NEELYVILLE
PROJECT NO. FA58-CR(3)(US57) STA. 886+12.5

BUTLER COUNTY

Drawn Nov. 1947 by J.G.
Traced Nov. 1947 by G.V.
Checked Dec. 1947 by M.N.R.

Note: This drawing is not to scale. Follow dimensions.

Sheet No. 2 of 3

K-983

TYP SEC. - Earthwork

STANDARDS

Route 101
San Joaquin
County 101
Sheet 101

SURFACE-CURB-AND-GUTTER
APPROACHES

DRAINAGE
C-1022

BRIDGES
25E-3
P-3

CONC. REINF. APPURTS,
ETC.
C-101

MISC.