

MO-100 EXHIBIT

"THIS MEDIA SHOULD NOT BE CONSIDERED A CERTIFIED DOCUMENT."
CONCEPT

INTERSECTION:
 ST. JOHNS ROAD

ALTERNATIVE NUMBER: 3

DESCRIPTION OF IMPROVEMENTS:
 SIGNAL
 DECELERATION LANES

ADVANTAGES:
 -REDUCTION IN RIGHT ANGLE CONFLICTS
 -MEETS DRIVER EXPECTATIONS
 -REDUCTION IN LEFT TURN DELAY
 -REDUCTION IN RIGHT TURN DELAY DUE TO LEFT TURN


DISADVANTAGES:
 -TRAFFIC SIGNAL MAINTENANCE
 -SIGNAL VIOLATIONS
 -INCREASE IN REAR END CRASHES

ESTIMATED CONSTRUCTION COST:
 \$843,700

DATE PREPARED 6/3/2022	
ROUTE 100	STATE MO
DISTRICT STL	SHEET NO. AL T3
COUNTY FRANKLIN	
JOB NO. J6P3522	
CONTRACT ID.	
PROJECT NO. 14559.03	
BRIDGE NO.	

DESCRIPTION	DATE

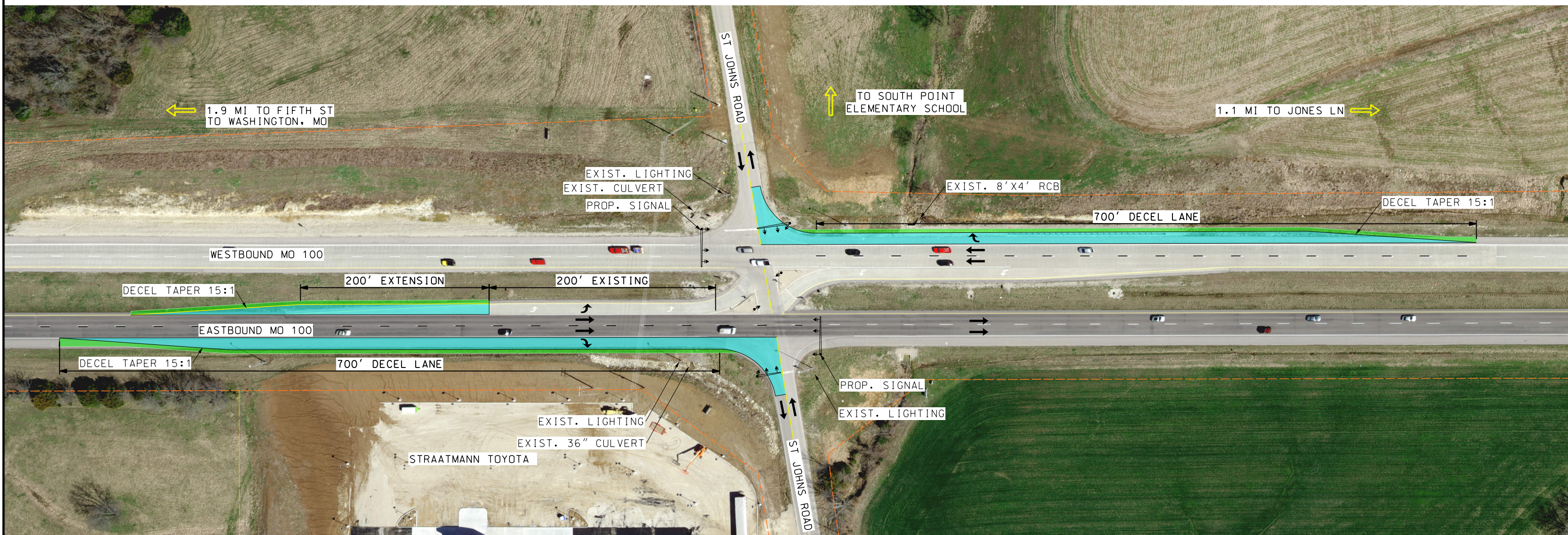
MISSOURI HIGHWAYS AND TRANSPORTATION COMMISSION



105 WEST CAPITOL
 JEFFERSON CITY, MO 65102
 1-888-ASK-MODOT (1-888-275-6636)

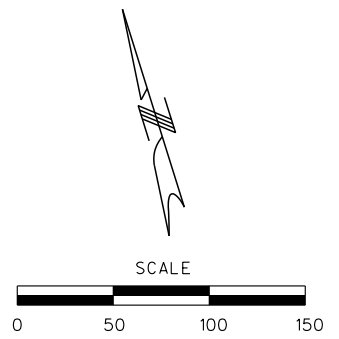
GBA
 9801 Renner Blvd, Ste. 300
 Lenexa, KS 66219
 913.492.0400
 GBAteam.com

SHEET NO.
ALTERNATIVE 3








TRAFFIC PERFORMANCE:

LEG	EXIST LOS/ AVG. DELAY (AM/PM)	PROP LOS/ AVG. DELAY (AM/PM)	LEG	EXIST LOS/ AVG. DELAY (AM/PM)	PROP LOS/ AVG. DELAY (AM/PM)
NB LT	F (516") / F (88")	- / -	SB LT	D (25") / E (49")	- / -
NB THRU	F (516") / F (88")	B (19") / C (20")	SB THRU	D (25") / E (49")	B (19") / B (20")
NB RT	F (516") / F (88")	- / -	SB RT	D (25") / E (49")	- / -
EB LT	B (11") / B (12")	C (29") / D (53")	WB LT	A (10") / B (10")	C (30") / B (20")
EB THRU	A (0") / A (0")	B (11") / B (14")	WB THRU	A (0") / A (0")	B (18") / B (11")
EB RT	A (0") / A (0")	A (9") / B (10")	WB RT	A (0") / A (0")	B (18") / B (11")



LEGEND

-  EXIST. PROPERTY LINE
-  EXIST. RW
-  DIRECTION OF TRAVEL
-  PROPOSED OPTION
-  PROPOSED SHOULDER