

CONCEPT

DATE PREPARED	6/3/2022
ROUTE	100 MO
DISTRICT	STL AL T1
COUNTY	FRANKLIN
FOR NO.	J6P3522
CONTRACT ID.	
PROJECT NO.	14559.03
BRIDGE NO.	

DESCRIPTION	DATE

MISSOURI HIGHWAYS AND TRANSPORTATION COMMISSION

105 WEST CAPITOL JEFFERSON CITY, MO 65102 1-888-684-6800 1-888-252-6861



**GBA**

9801 Renner Blvd, Ste. 300  
Lenexa, KS 66159  
913.482.2900  
GBAteam.com

SHEET NO.

MO-100 EXHIBIT

INTERSECTION:  
ROUTE M / OLD HIGHWAY 100

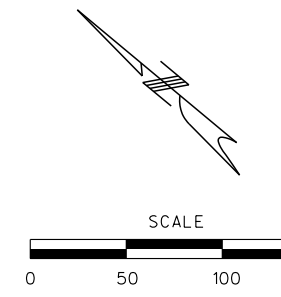
ALTERNATIVE NUMBER: 1

DESCRIPTION OF IMPROVEMENTS:  
J-TURNS WITH RESTRICTED CROSSINGS

- ADVANTAGES:
- NO TRAFFIC SIGNALS TO MAINTAIN
  - REDUCTION IN RIGHT ANGLE CONFLICTS
  - OVERALL REDUCTION IN CONFLICTING MOVEMENTS
  - INCREASED RIGHT TURN DECEL SAFETY
  - MAINTAIN INTEGRITY OF HIGH SPEED CORRIDOR W/ HEAVY THRU MOVEMENTS

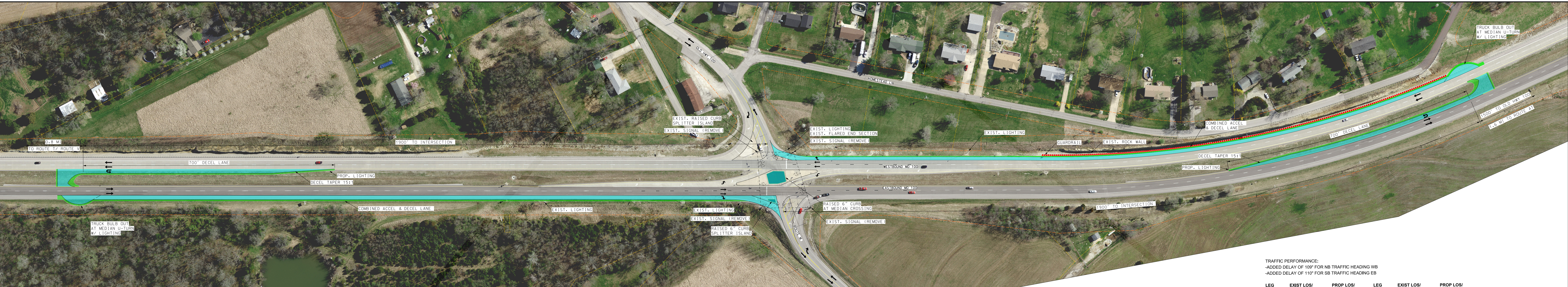
- DISADVANTAGES:
- INCREASED ADVERSE TRAVEL FOR HEAVY VOLUME OF MINOR ROAD THRU AND LEFT MOVEMENTS
  - OUTSIDE OF THE DRIVER EXPECTATION
  - NARROW MEDIAN LIMITS FULL BENEFIT OF U-TURN DEDICATED ACCEL LANE

ESTIMATED CONSTRUCTION COST:  
\$1,742,900



LEGEND

- EXIST. PROPERTY LINE
- EXIST. R/W
- ← DIRECTION OF TRAVEL
- PROPOSED OPTION
- PROPOSED SHOULDER



TRAFFIC PERFORMANCE:  
-ADDED DELAY OF 109" FOR NB TRAFFIC HEADING WB  
-ADDED DELAY OF 110" FOR SB TRAFFIC HEADING EB

LEG	EXIST LOS/ AVG. DELAY (AM/PM)	PROP LOS/ AVG. DELAY (AM/PM)	LEG	EXIST LOS/ AVG. DELAY (AM/PM)	PROP LOS/ AVG. DELAY (AM/PM)
NB LT	-/-	-/-	SB LT	-/-	-/-
NB THRU	B (20") / C (23")	-/-	SB THRU	C (23") / C (26")	-/-
NB RT	-/-	B (12") / B (12")	SB RT	-/-	B (11") / B (12")
EB LT	C (30") / D (36")	A (9") / B (10")	WB LT	C (31") / D (44")	A (9") / A (10")
EB THRU	B (12") / B (14")	A (0") / A (0")	WB THRU	A (9") / A (9")	A (0") / A (0")
EB RT	B (12") / B (14")	A (0") / A (0")	WB RT	-/-	A (0") / A (0")