

CONCEPT PLANS

NOT FOR CONSTRUCTION

DISCLAIMER OF RESPONSIBILITY

I hereby specify that the documents intended to be authorized by my seal are limited to this sheet, and I hereby disclaim any responsibility for all other drawings, Specifications, Estimates, Reports or instruments relating to or intended to be used for any part of the engineering project or survey.

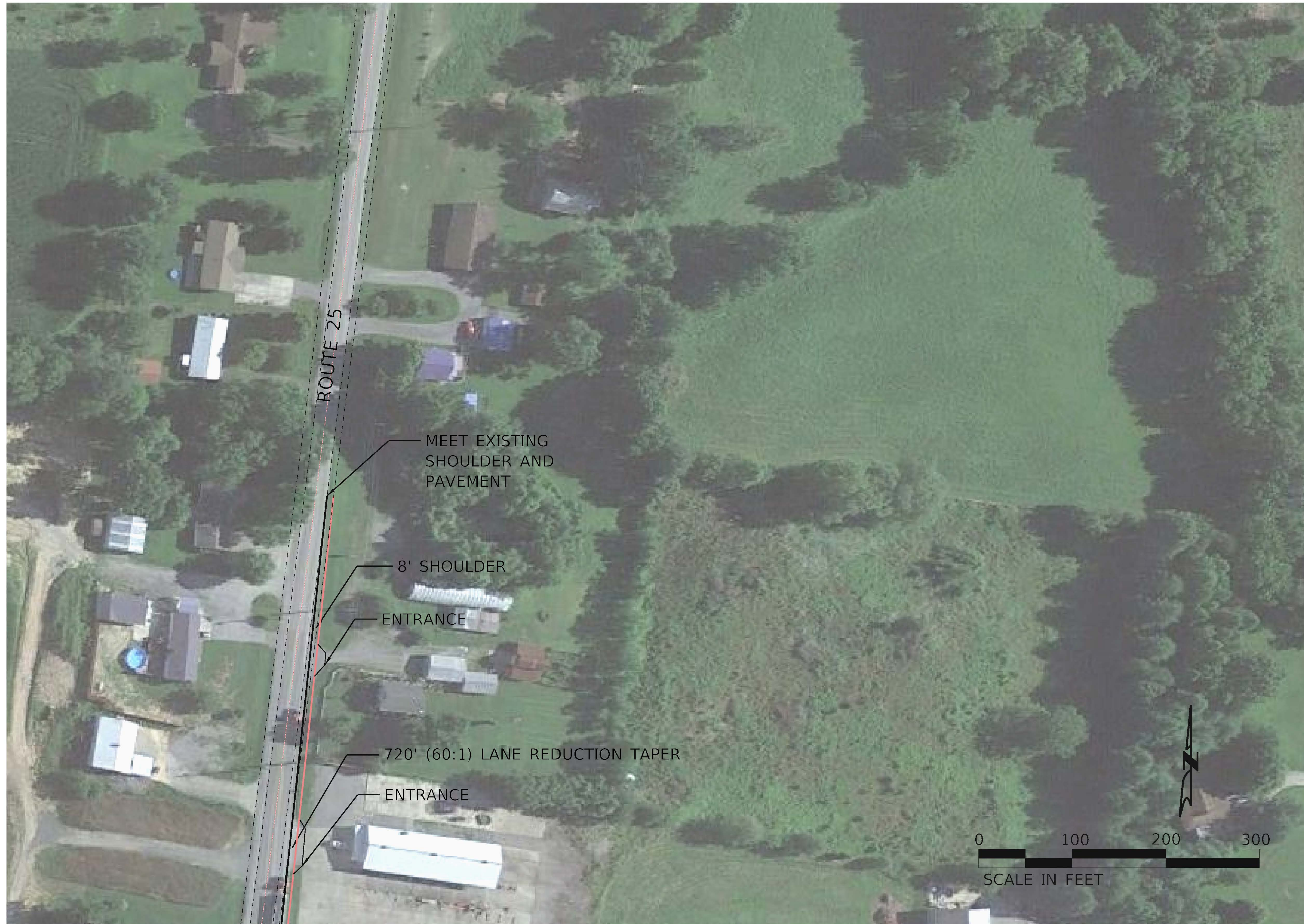
REV	DATE	BY	DESCRIPTION

LOCHMUELLER GROUP
 411 N. 10TH STREET, SUITE 200
 SAINT LOUIS, MISSOURI 63101
 P (314) 621-3395 F (314) 621-3288
 WWW.LOCHGROUP.COM
 MISSOURI STATE ENGINEERING CORPORATION
 CERTIFICATE/LICENSE NO. 202011852

**CAPE GIRARDEAU
 RT K CONCEPTS**
**RT K AT RT 25
 ROUNDABOUT**

PROJECT/JOB NO.	=
MSD PROJECT NO.	=
MSD BASE MAP	=
DATE PREPARED	4/13/2022
SHEET OF	

LOCHMUELLER PROJECT NO. 520-0047



CONCEPT PLANS

NOT FOR CONSTRUCTION

DISCLAIMER OF RESPONSIBILITY

I hereby specify that the documents intended to be authorized by my seal are limited to this sheet, and I hereby disclaim any responsibility for all other drawings, specifications, estimates, reports or other documents or instruments relating to or intended to be used for any part of the engineering project or survey.

REV	DATE	BY	DESCRIPTION

LOCHMUELLER GROUP
 411 N. 10TH STREET, SUITE 200
 SAINT LOUIS, MISSOURI 63101
 P (314) 621-3395 F (314) 621-3288
 WWW.LOCHGROUP.COM
 MISSOURI STATE ENGINEERING CORPORATION
 CERTIFICATE/LICENSE NO. 2002011852

**CAPE GIRARDEAU
 RT K CONCEPTS**
**RT K AT RT 25
 ROUNDABOUT**

PROJECT/JOB NO.	=
MSD PROJECT NO.	=
MSD BASE MAP	=
DATE PREPARED	4/13/2022
SHEET	OF

LOCHMUELLER PROJECT NO. 520-0047



MEET EXISTING PAVEMENT

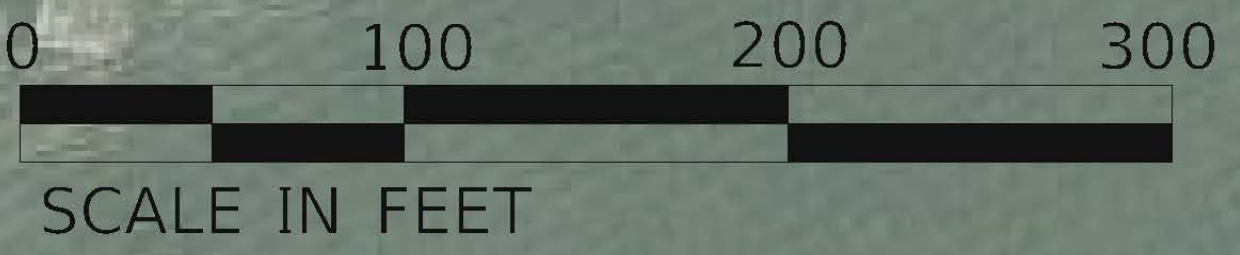
720' (60:1) LANE
REDUCTION
TAPER

ROUTE K

ENTRANCE

ENTRANCE

8' SHOULDER



**CONCEPT
PLANS**

**NOT FOR
CONSTRUCTION**

**DISCLAIMER OF
RESPONSIBILITY**

I hereby specify that the documents intended to be authorized by my seal are limited to this sheet, and I hereby disclaim any responsibility for all other drawings, specifications, estimates, reports or other documents or instruments relating to or intended to be used for any part of the engineering project or survey.

REV	DATE	BY	DESCRIPTION

**LOCHMUELLER
GROUP**
411 N. 10TH STREET, SUITE 200
SAINT LOUIS, MISSOURI 63101
P (314) 621-3395 F (314) 621-3288
WWW.LOCHGROUP.COM
MISSOURI STATE ENGINEERING CORPORATION
CERTIFICATE/LICENSE NO. 2002011852

**CAPE GIRARDEAU
RT K CONCEPTS**
**RT K AT RT 25
ROUNDABOUT**

PROJECT/JOB NO.	
MSD PROJECT NO.	
MSD BASE MAP	
DATE PREPARED	4/13/2022
SHEET	
OF	

LOCHMUELLER PROJECT NO. 520-0047