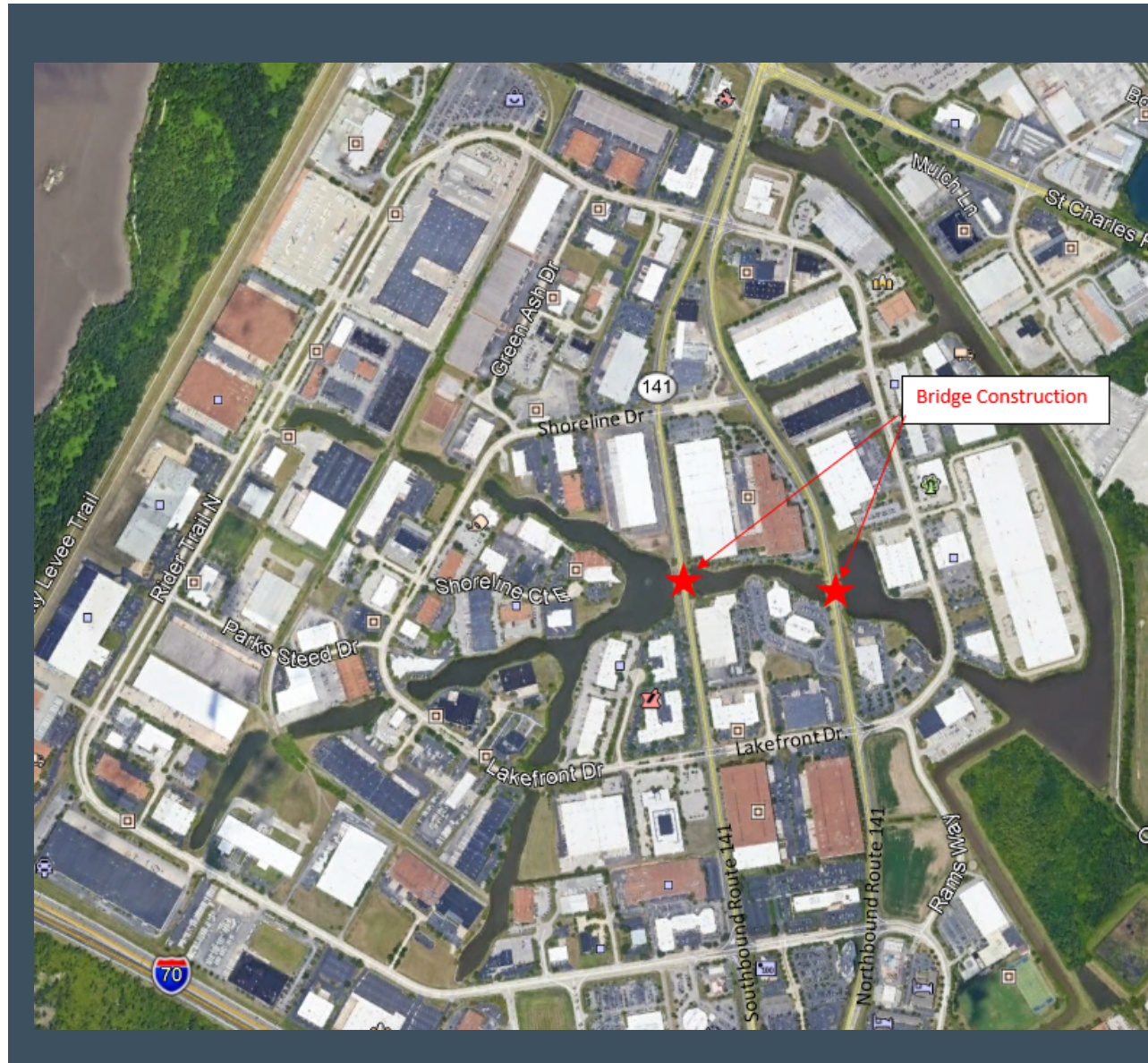


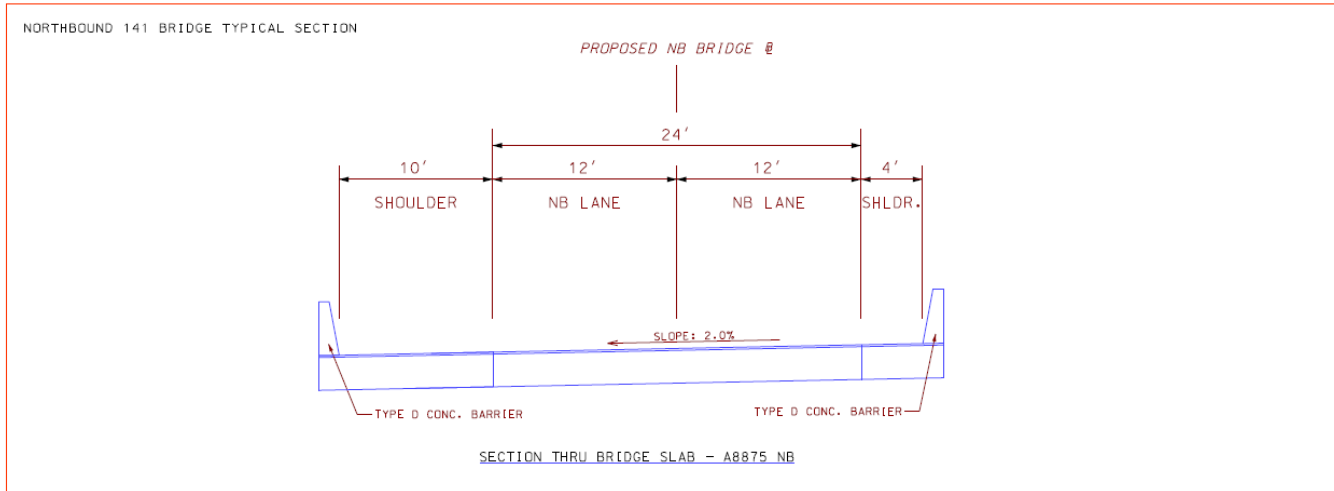
Route 141 Bridge Replacements over Lakes in Earth City

Stakeholder Meeting
November 15, 2021

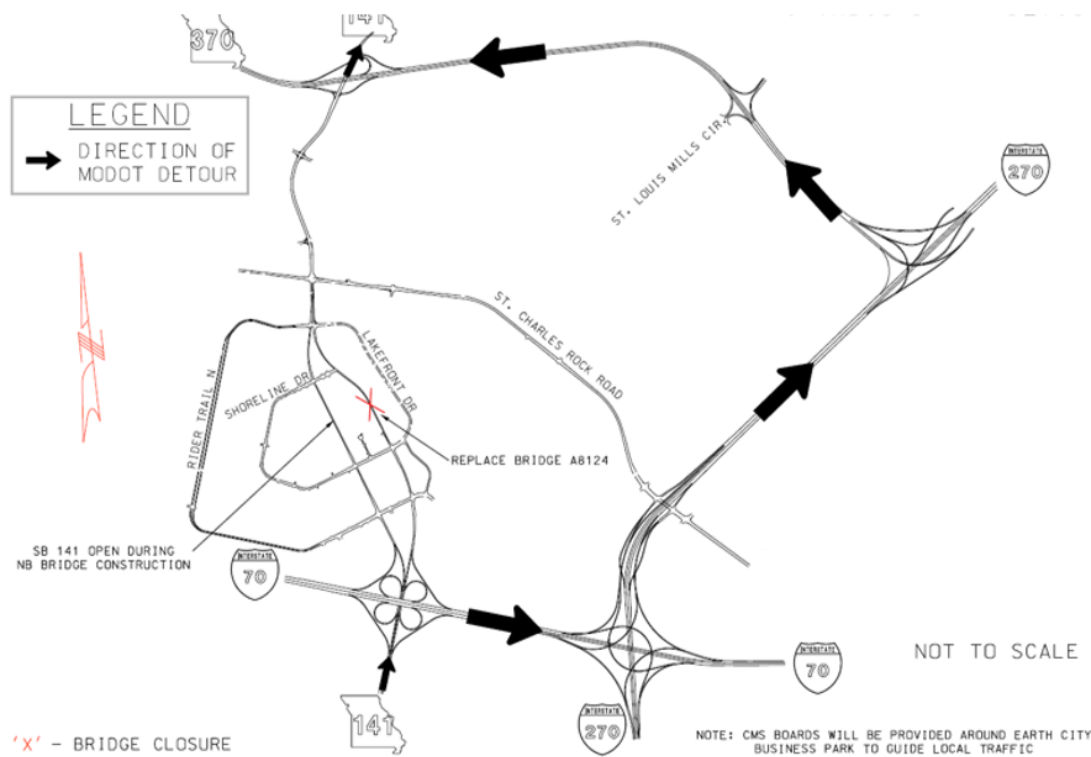




Project Goal:
Replace the aging and narrow bridges on both
Northbound & Southbound Route 141 in Earth City

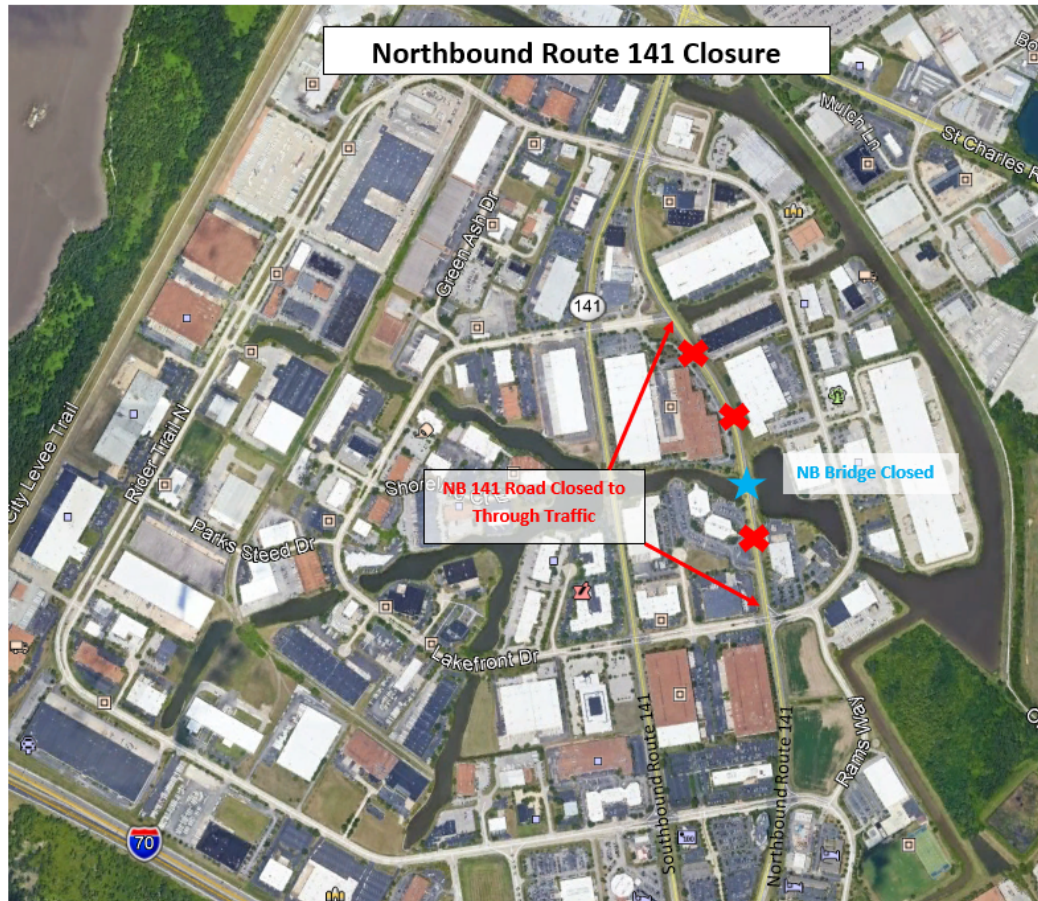


New Northbound Route 141 Bridge



Northbound Route 141 Signed Detour

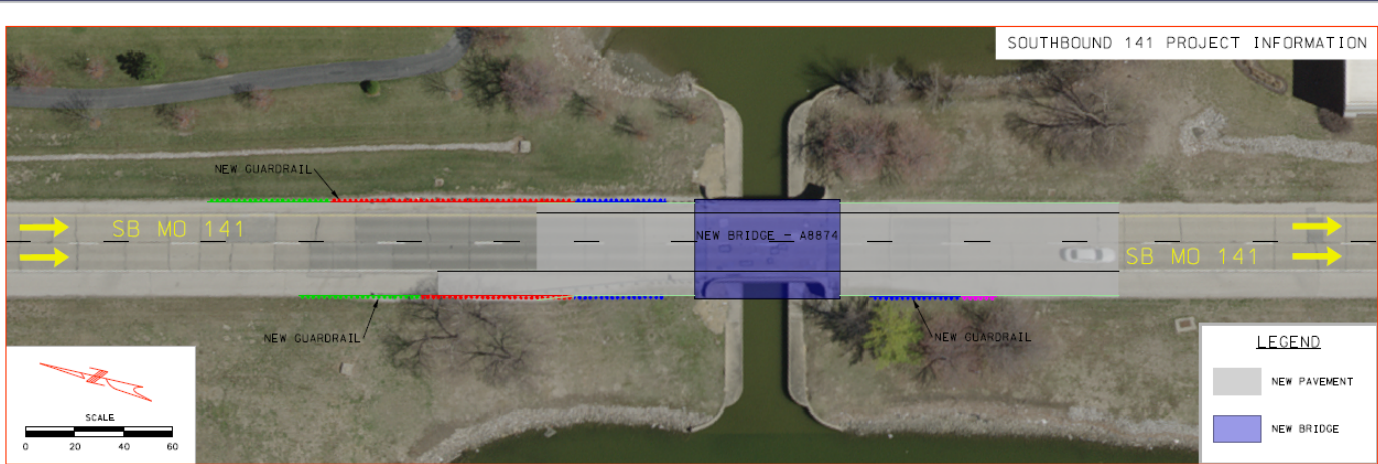
Through traffic on northbound Route 141 will take the following detour: northbound Route 141 to eastbound I-70 to northbound I-270 to westbound Route 370 to Route 141. Local traffic will detour on local streets. Southbound 141 will remain open to traffic.



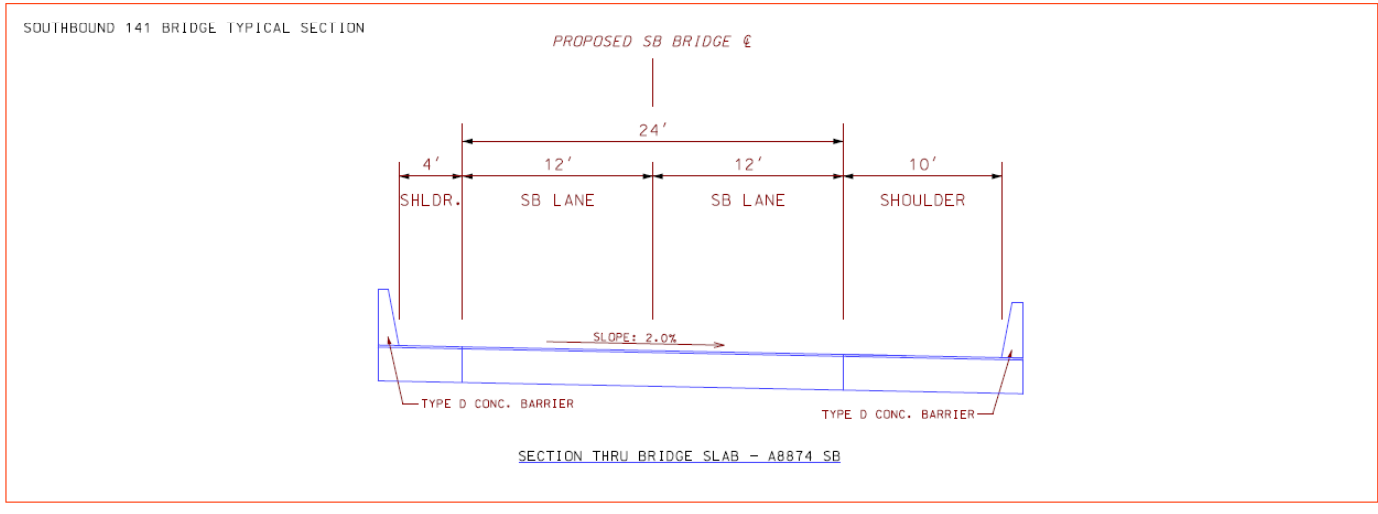
Northbound
Route 141
closed
between
Lakefront Dr
and
Shoreline Dr

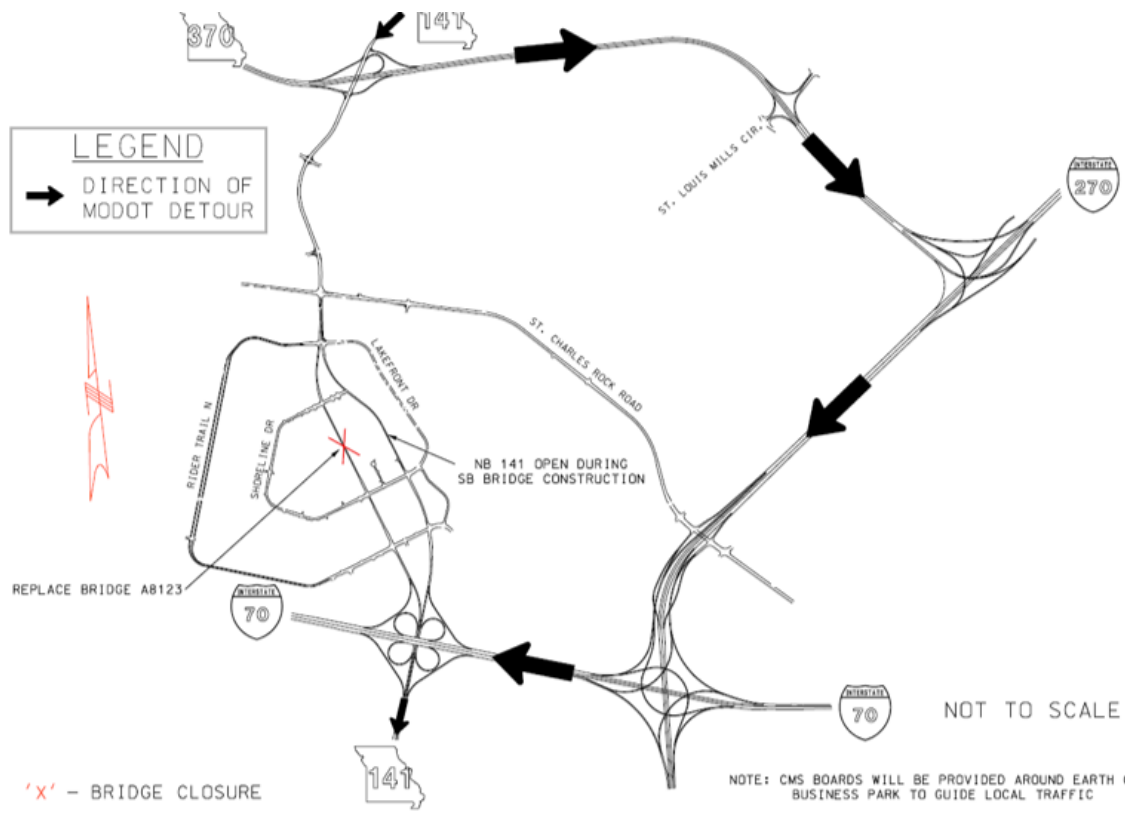


Northbound
Route 141
Closure at
Lakefront
Drive



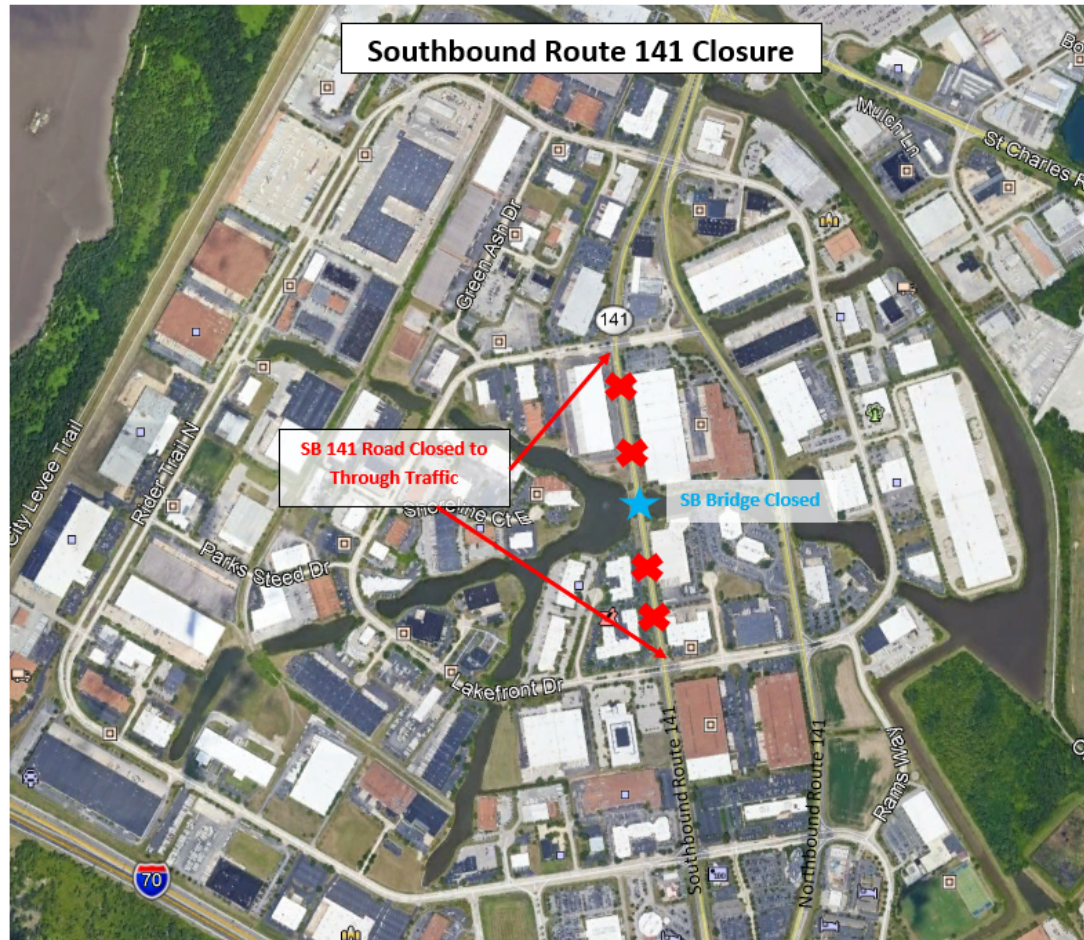
New Southbound Route 141 Bridge



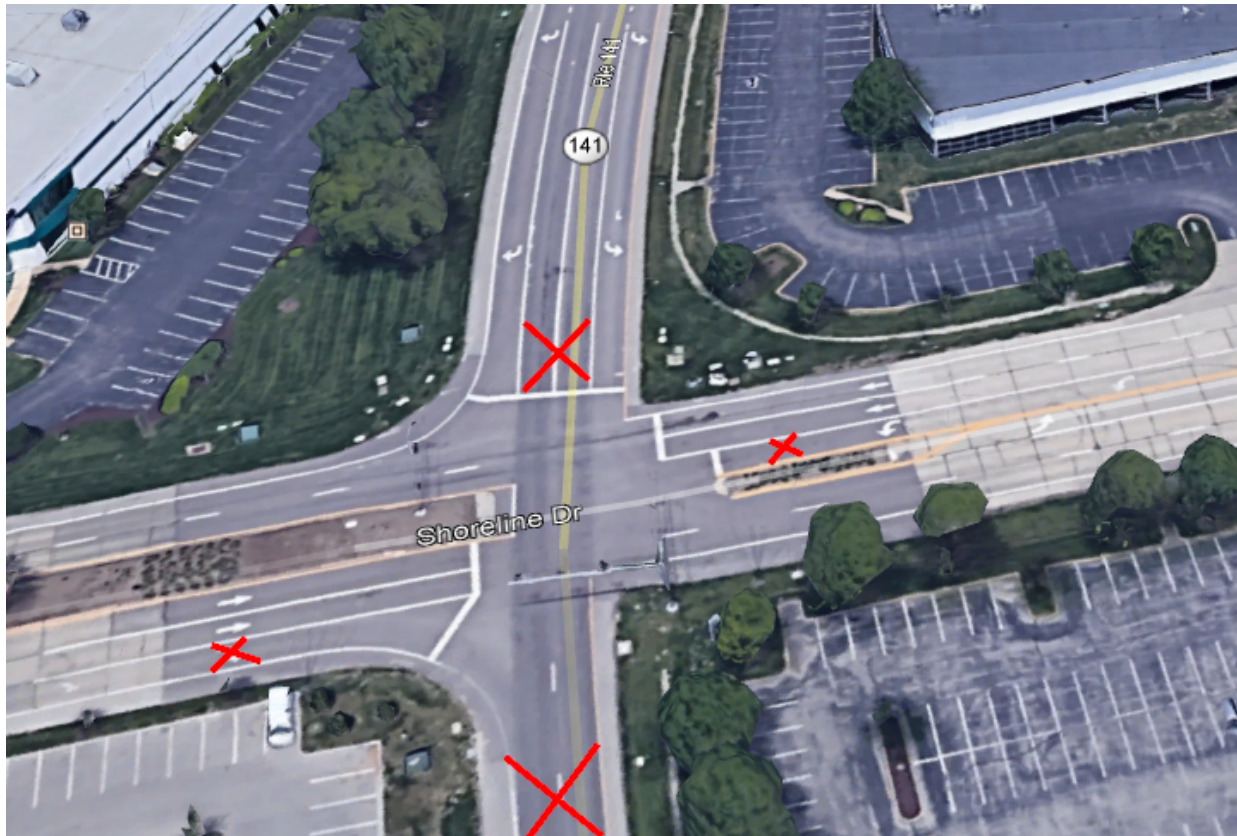


Southbound Route 141 Signed Detour

Through traffic on southbound Route 141 will take the following detour: southbound Route 141 to eastbound Route 370 to southbound I-270 to westbound I-70 to Route 141. Local traffic will detour on local streets. Northbound 141 will remain open to traffic.



Southbound
Route 141
closed
between
Shoreline Dr
and
Lakefront Dr



Southbound
Route 141
Closure at
Shoreline
Drive

What are the anticipated construction schedule?

- Construction begins Summer of 2022
 - MoDOT anticipates closing each bridge for 3 months to demolish the existing structure and reconstruct the new bridge
 - Work will begin on the NB Route 141 bridge
 - Bridges will be replaced one at a time

Questions??

Please take the time to fill out the survey by
December 1, 2021.

Project Contact:

Lisa Kuntz, PE

Project Manager

Email: Lisa.Kuntz@modot.mo.gov

Phone: 314-453-1879

THANK YOU FOR ATTENDING

