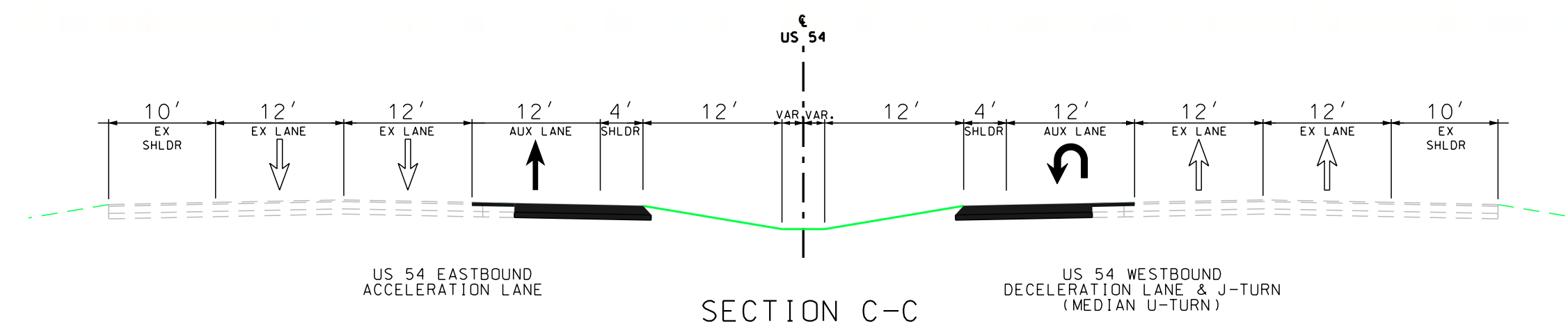
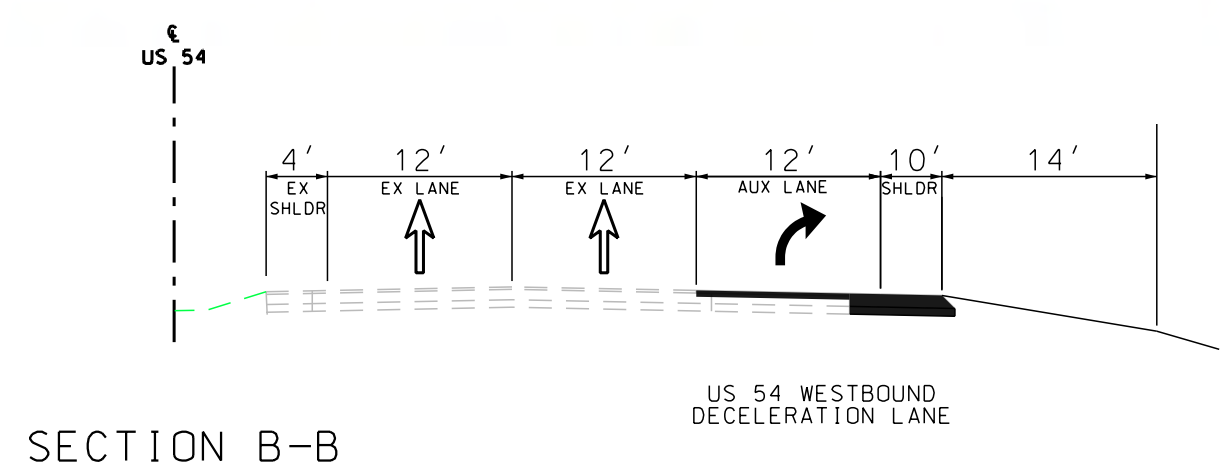
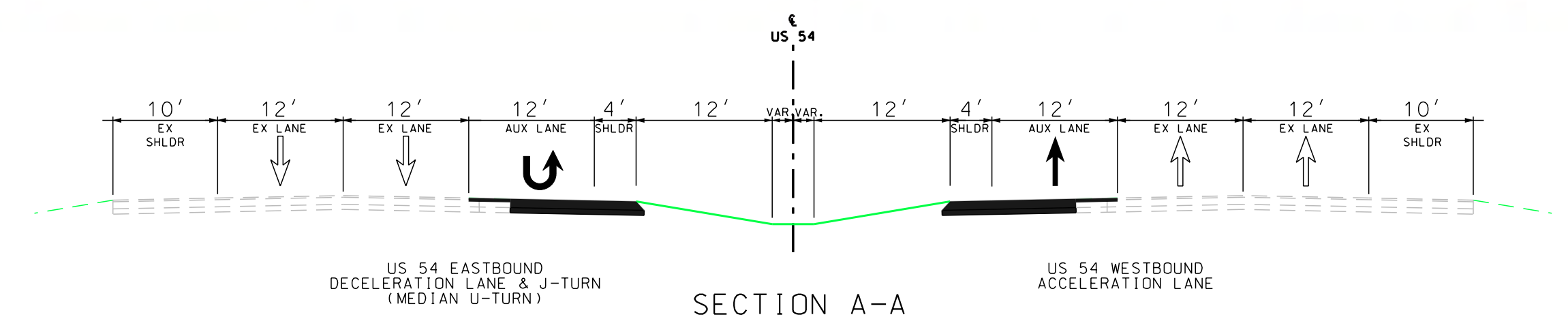


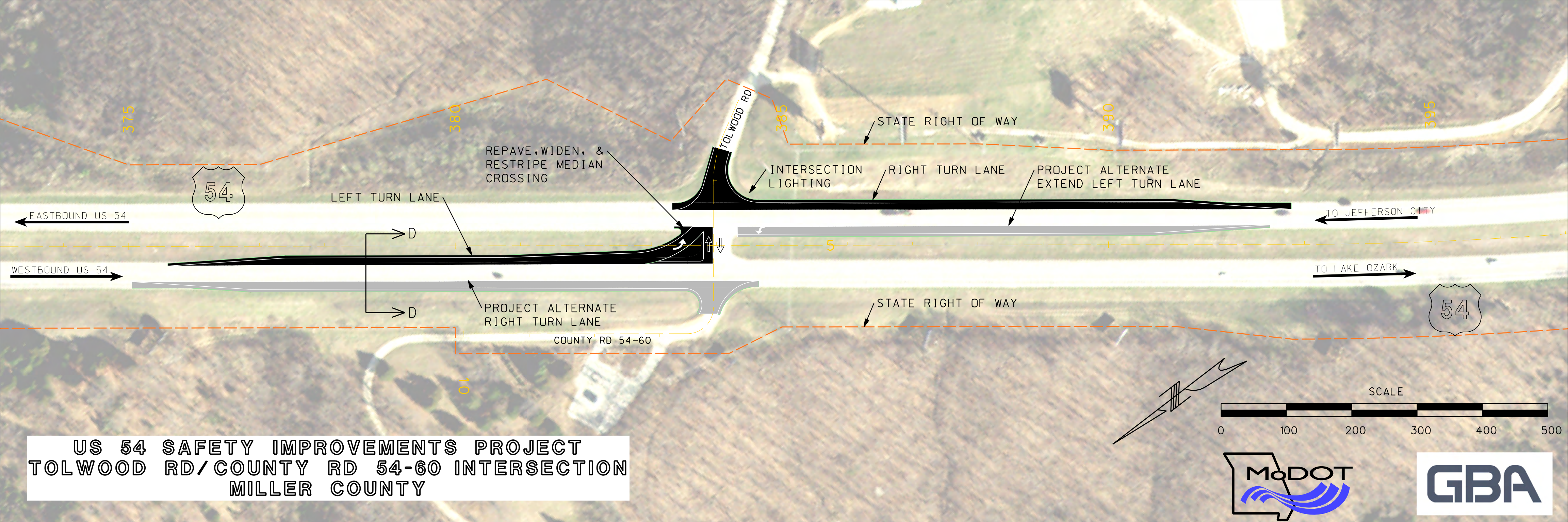
LEGEND

NEW PAVEMENT

PAVEMENT REMOVAL

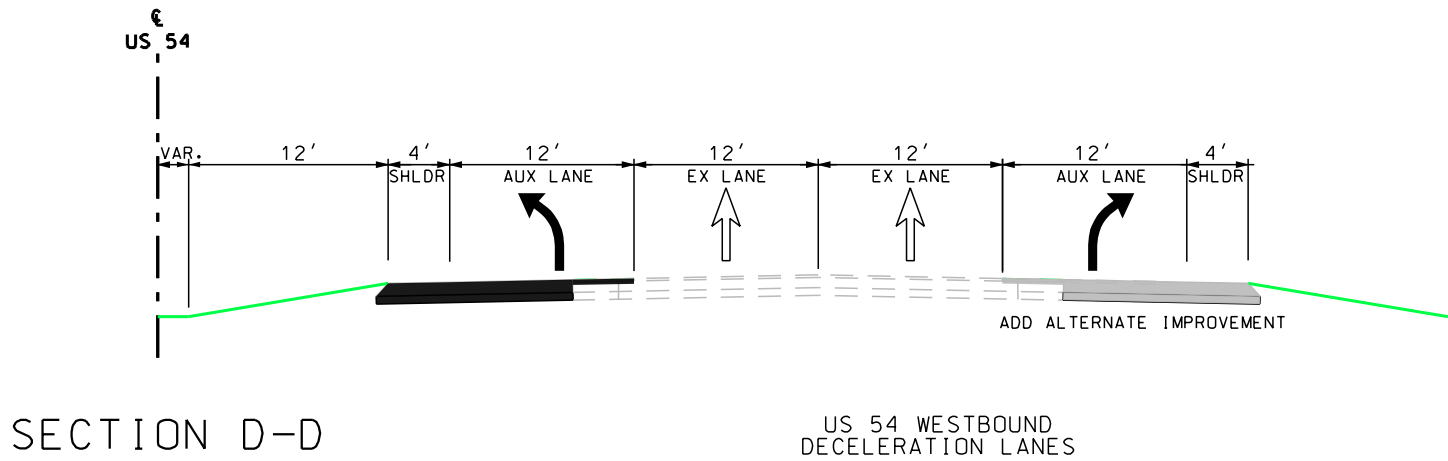
ADDITIONAL INFORMATION:
DISTANCE FROM INTERSECTION
TO EAST MEDIAN U-TURN= 3100 FT (1/2 MI)
TO WEST MEDIAN U-TURN= 1900 FT (1/3 MI)

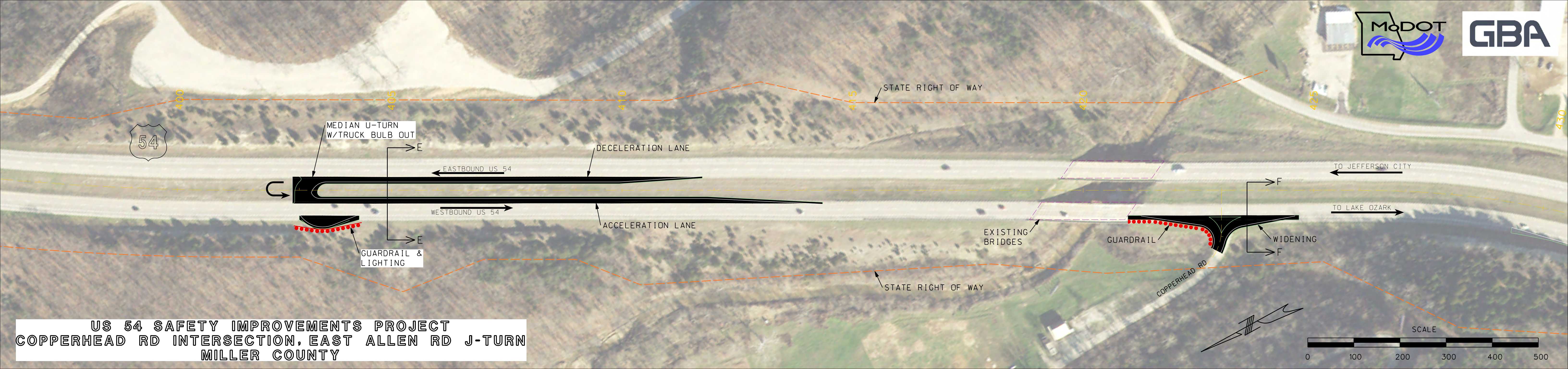




US 54 SAFETY IMPROVEMENTS PROJECT
TOLWOOD RD/COUNTY RD 54-60 INTERSECTION
MILLER COUNTY

LEGEND	
	NEW PAVEMENT
	PROJECT ADD ALTERNATE PROPOSED PAVEMENT



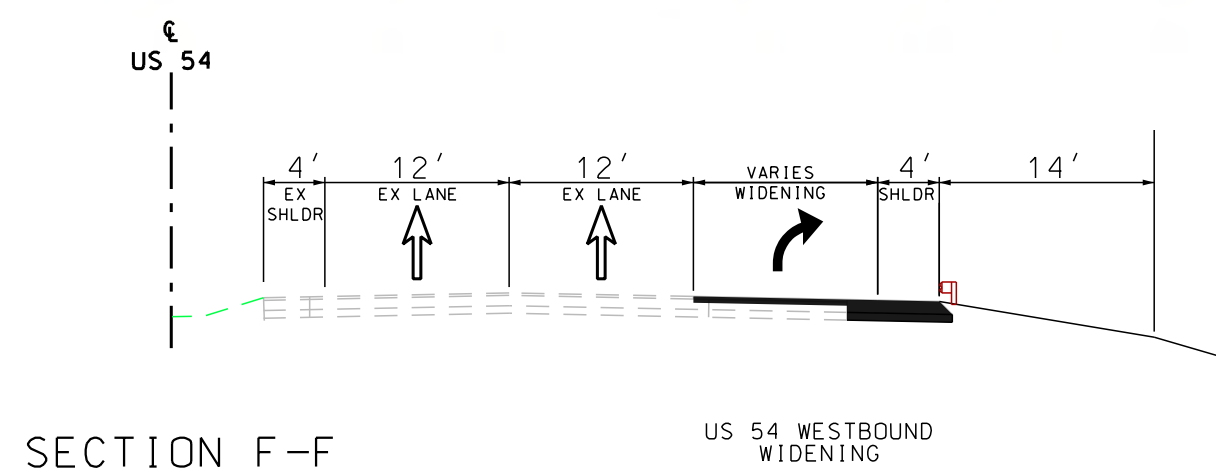
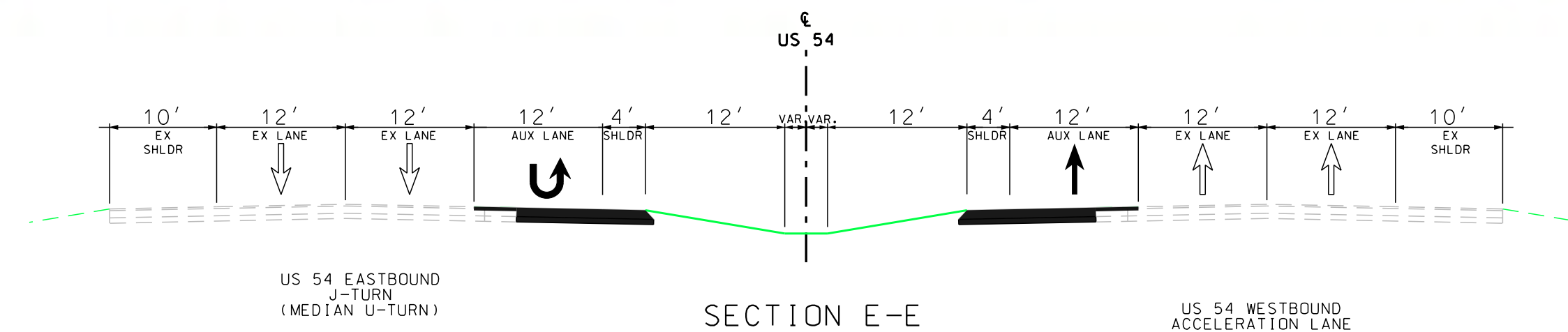


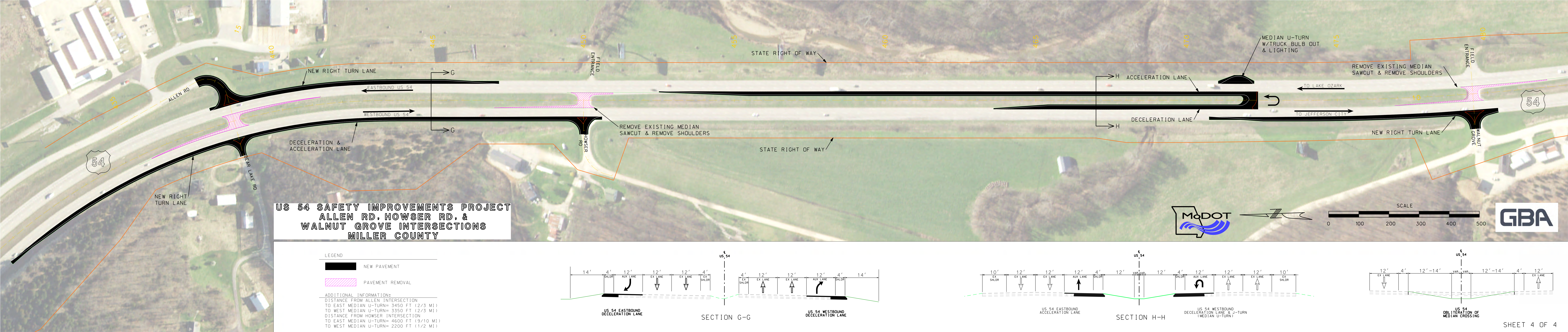
**US 54 SAFETY IMPROVEMENTS PROJECT
COPPERHEAD RD INTERSECTION, EAST ALLEN RD J-TURN
MILLER COUNTY**

LEGEND

NEW PAVEMENT

ADDITIONAL INFORMATION:
DISTANCE FROM COPPERHEAD INTERSECTION
TO EAST MEDIAN U-TURN= 2000 FT (1/3 MI)
TO WEST MEDIAN U-TURN= 4900 FT (9/10 MI)





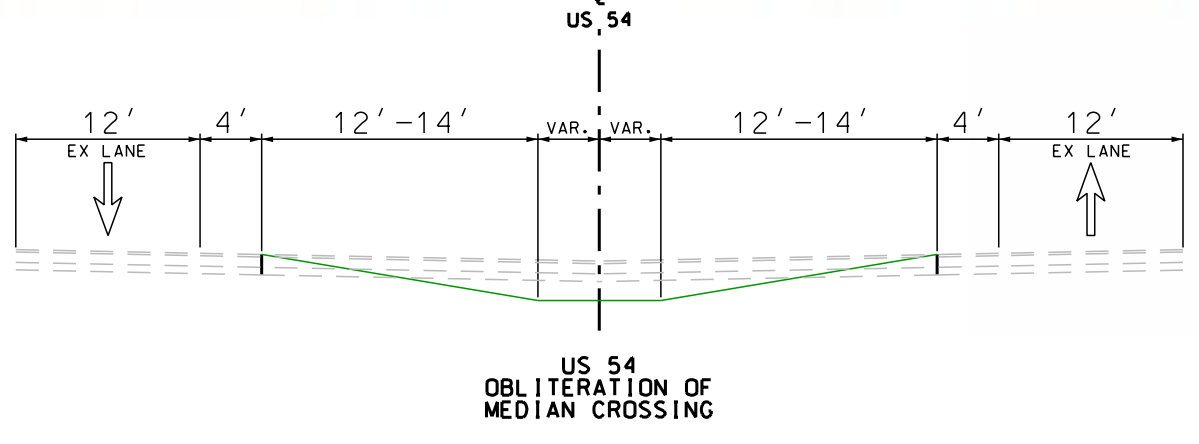
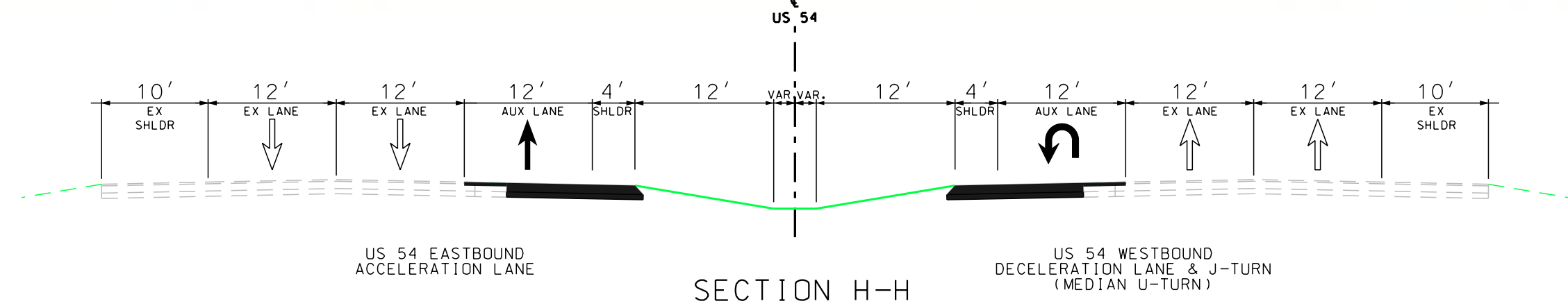
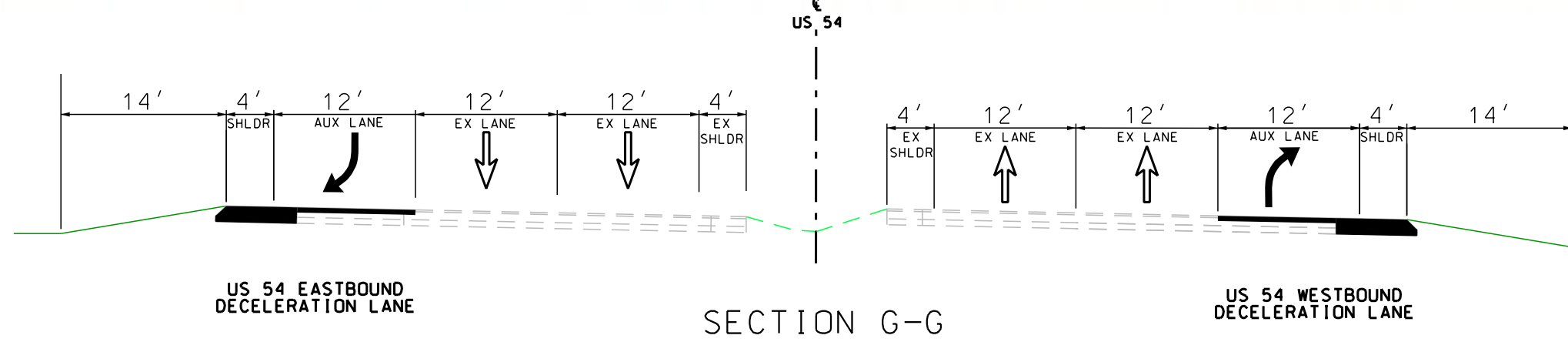
US 54 SAFETY IMPROVEMENTS PROJECT
ALLEN RD, HOWSER RD, &
WALNUT GROVE INTERSECTIONS
MILLER COUNTY

LEGEND

NEW PAVEMENT

PAVEMENT REMOVAL

ADDITIONAL INFORMATION:
DISTANCE FROM ALLEN INTERSECTION
TO EAST MEDIAN U-TURN= 3450 FT (2/3 MI)
TO WEST MEDIAN U-TURN= 3350 FT (2/3 MI)
DISTANCE FROM HOWSER INTERSECTION
TO EAST MEDIAN U-TURN= 4600 FT (9/10 MI)
TO WEST MEDIAN U-TURN= 2200 FT (1/2 MI)



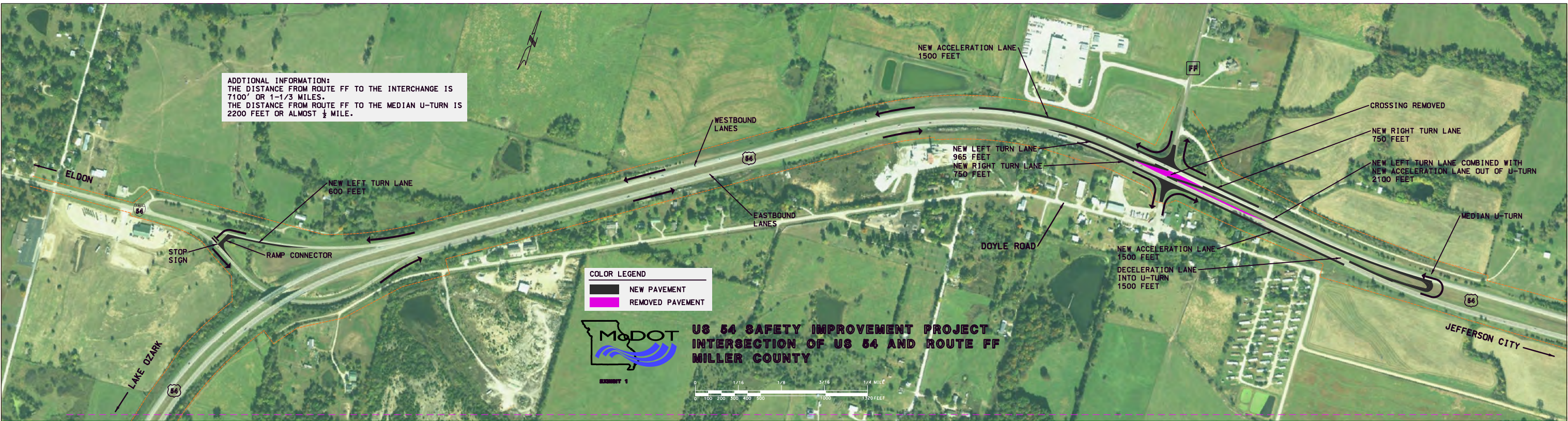


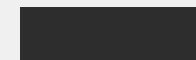


EXHIBIT 2

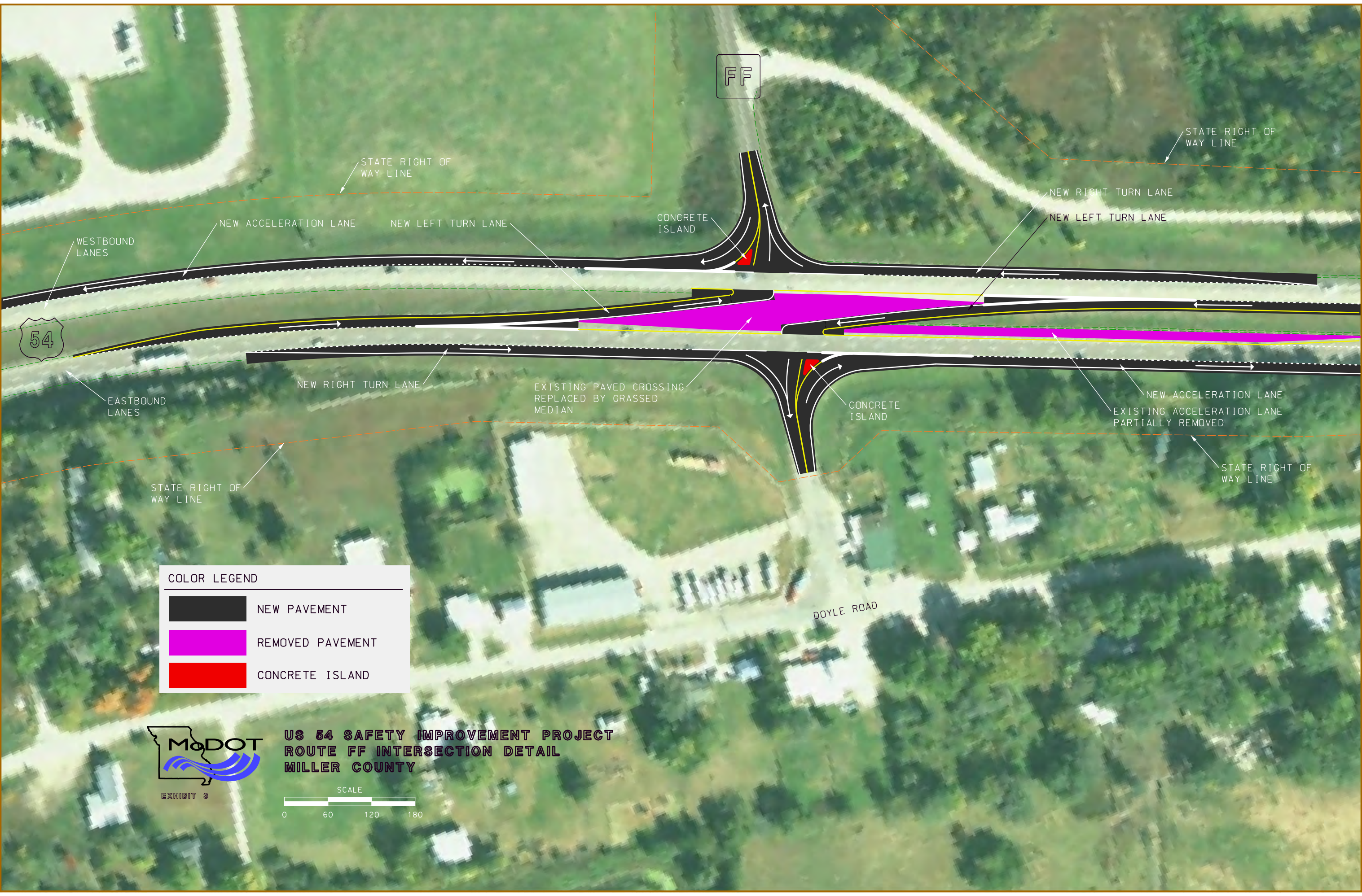
US 54 SAFETY IMPROVEMENT PROJECT
ROUTE FF INTERSECTION MEDIAN U-TURN DETAIL
MILLER COUNTY



COLOR LEGEND






NEW PAVEMENT



54

FF

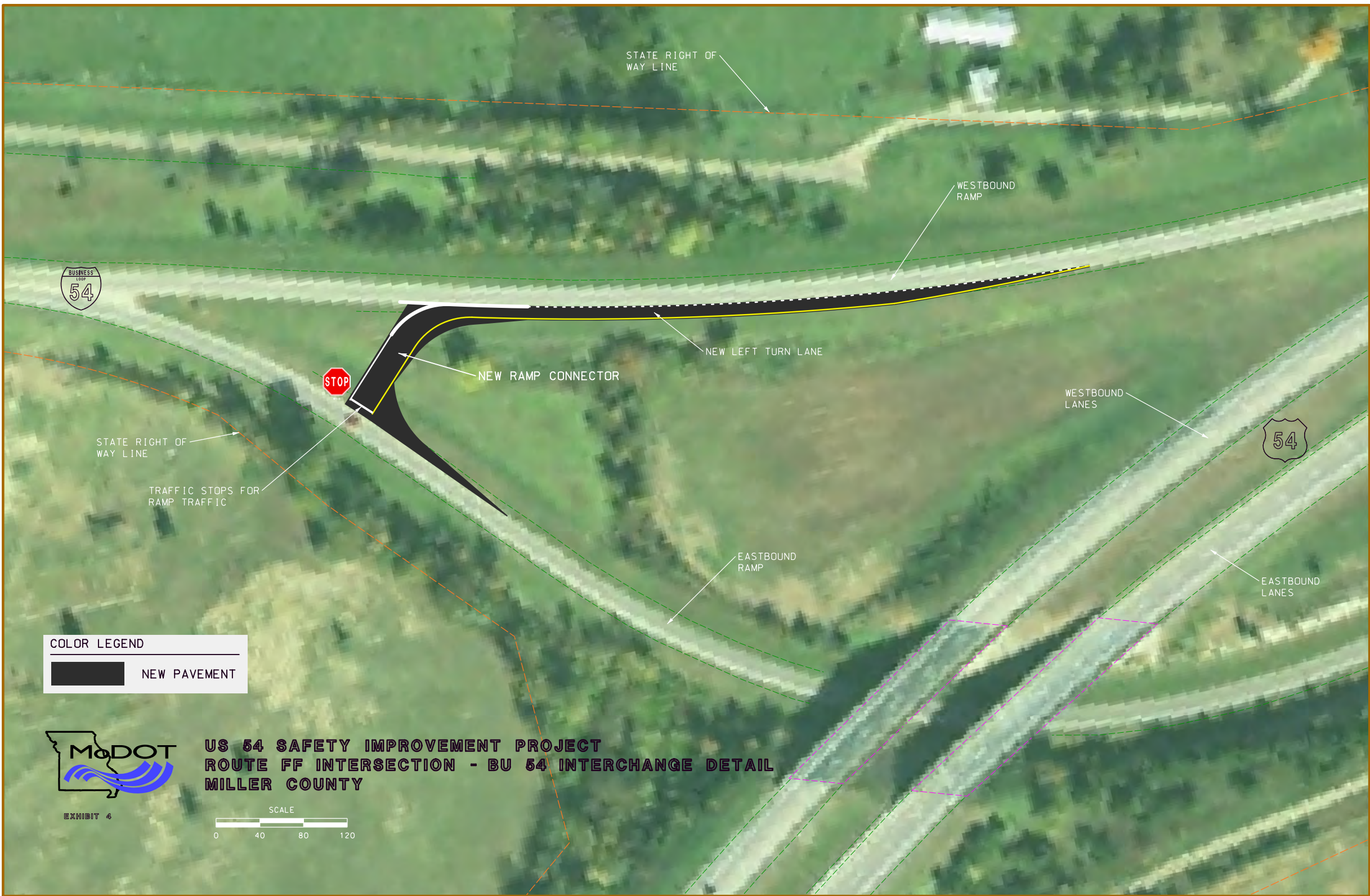
COLOR LEGEND

	NEW PAVEMENT
	REMOVED PAVEMENT
	CONCRETE ISLAND

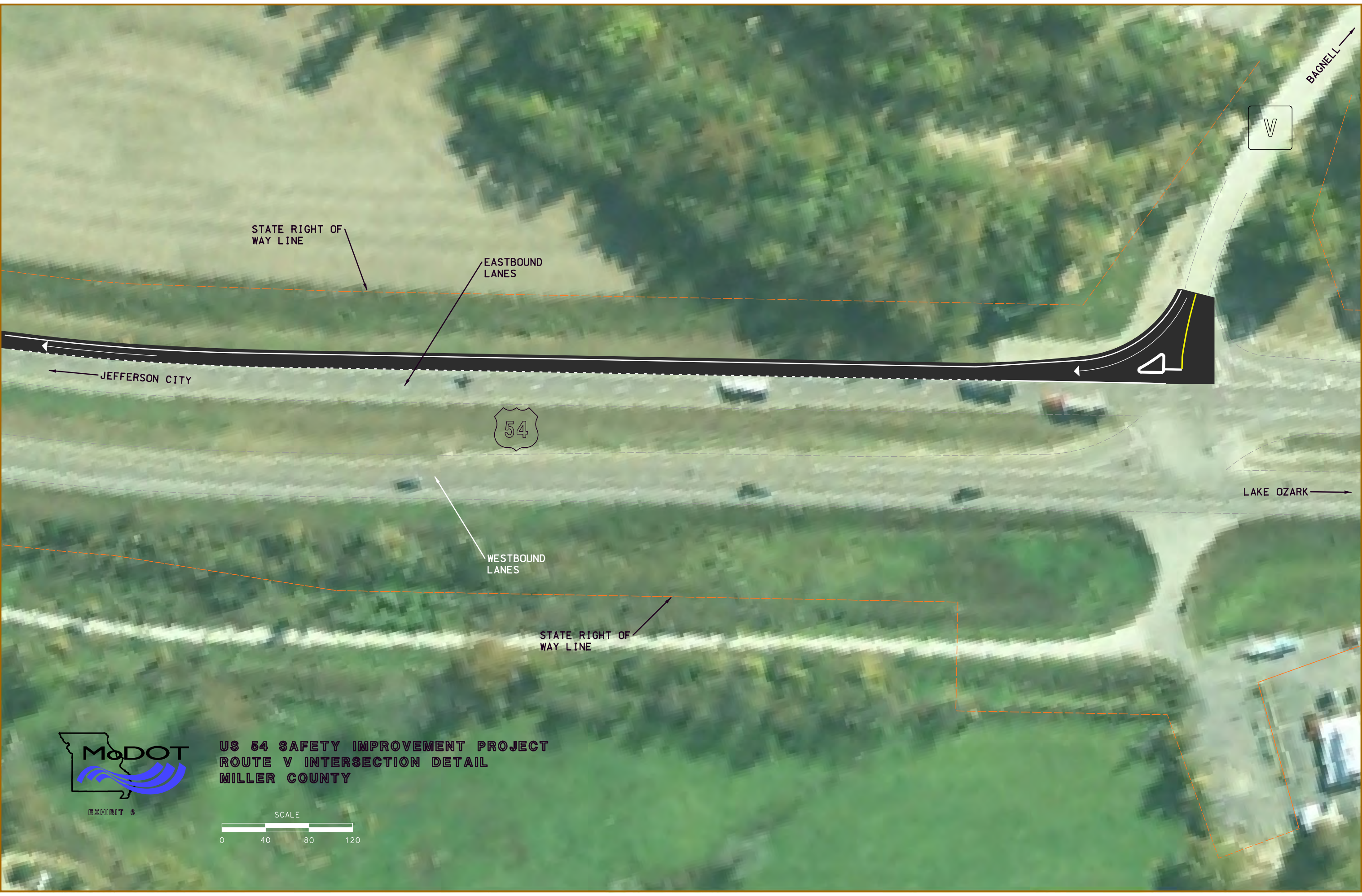


US 54 SAFETY IMPROVEMENT PROJECT
ROUTE FF INTERSECTION DETAIL
MILLER COUNTY









STATE RIGHT OF
WAY LINE

EASTBOUND
LANES

JEFFERSON CITY



WESTBOUND
LANES

STATE RIGHT OF
WAY LINE

LAKE OZARK

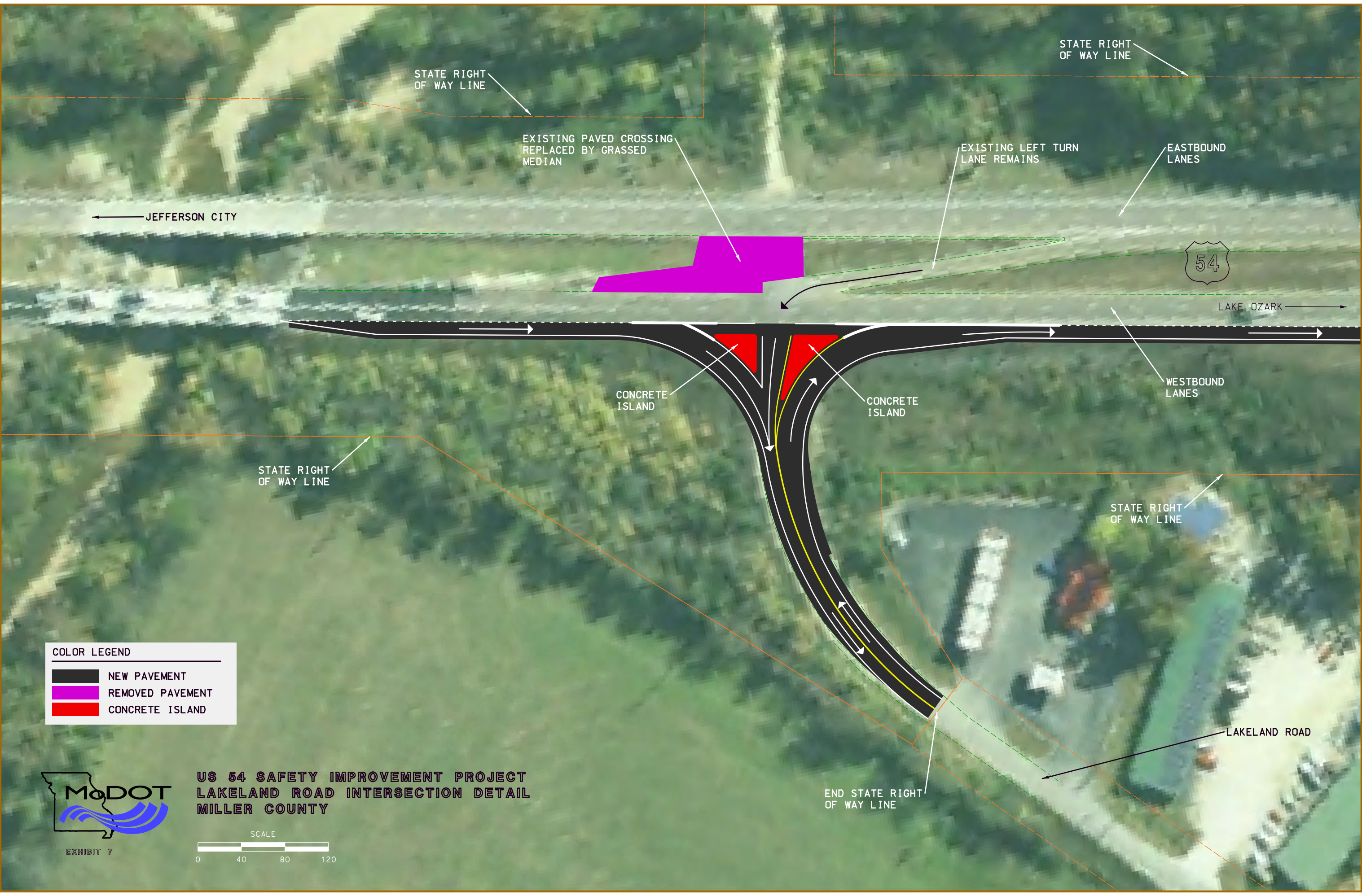


BAGWELL



US 54 SAFETY IMPROVEMENT PROJECT
ROUTE V INTERSECTION DETAIL
MILLER COUNTY





STATE RIGHT
OF WAY LINE

STATE RIGHT
OF WAY LINE

EXISTING PAVED CROSSING
REPLACED BY GRASSED
MEDIAN

EXISTING LEFT TURN
LANE REMAINS

EASTBOUND
LANES

JEFFERSON CITY



LAKE OZARK

WESTBOUND
LANES

CONCRETE
ISLAND

CONCRETE
ISLAND

STATE RIGHT
OF WAY LINE

STATE RIGHT
OF WAY LINE

LAKELAND ROAD

END STATE RIGHT
OF WAY LINE

COLOR LEGEND

NEW PAVEMENT
REMOVED PAVEMENT
CONCRETE ISLAND

MoDOT

EXHIBIT 7

US 54 SAFETY IMPROVEMENT PROJECT
LAKELAND ROAD INTERSECTION DETAIL
MILLER COUNTY



