

ADDING TURN LANES & ACCESS MANAGEMENT

ROUTE 53 IN POPLAR BLUFF, MO

ABOUT

The project includes adding a center turn lane on Route 53 in Poplar Bluff, Missouri from Route 142 to County Road 306. One of the key benefits of two-way left-turn lanes includes the removal of turning vehicles from the through traffic lanes, which helps improve efficiency by reducing travel time and delay.

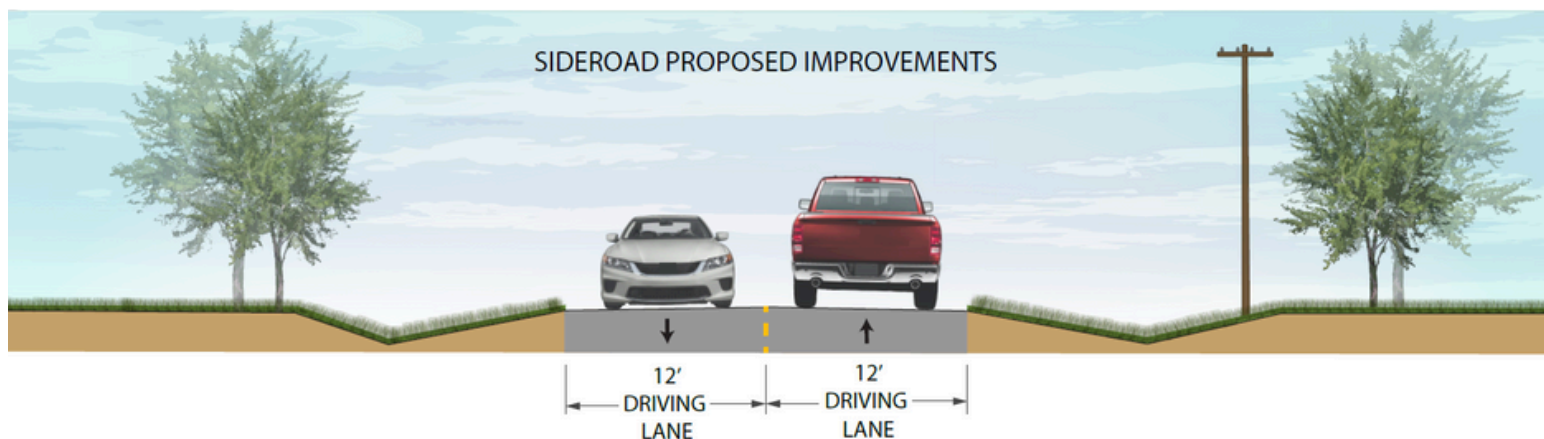
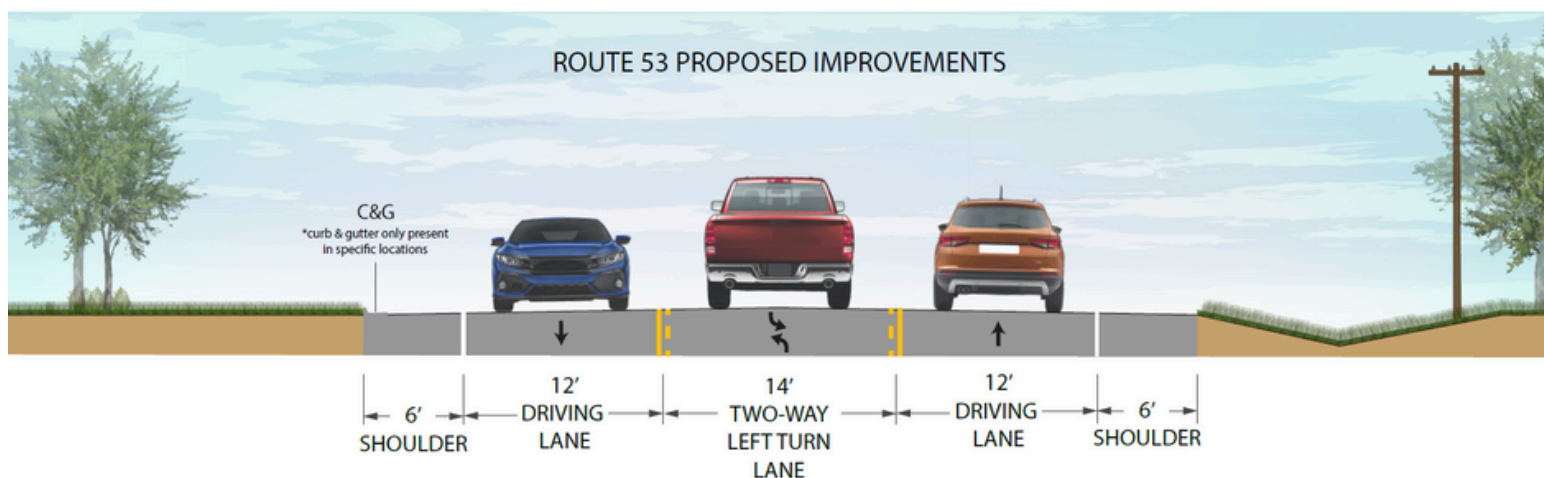
Additionally, this project includes a left turn lane at Route UU and access management measures to reduce conflict points along the corridor.

TIMELINE

Tentatively, the project is expected to be let in spring 2027. Construction could begin as early as summer 2027, with completion anticipated in late 2027/early 2028. Work will be underway for approximately six months.

TRAFFIC

Work will be staged to allow the roadway to remain open with minor detours, as needed.



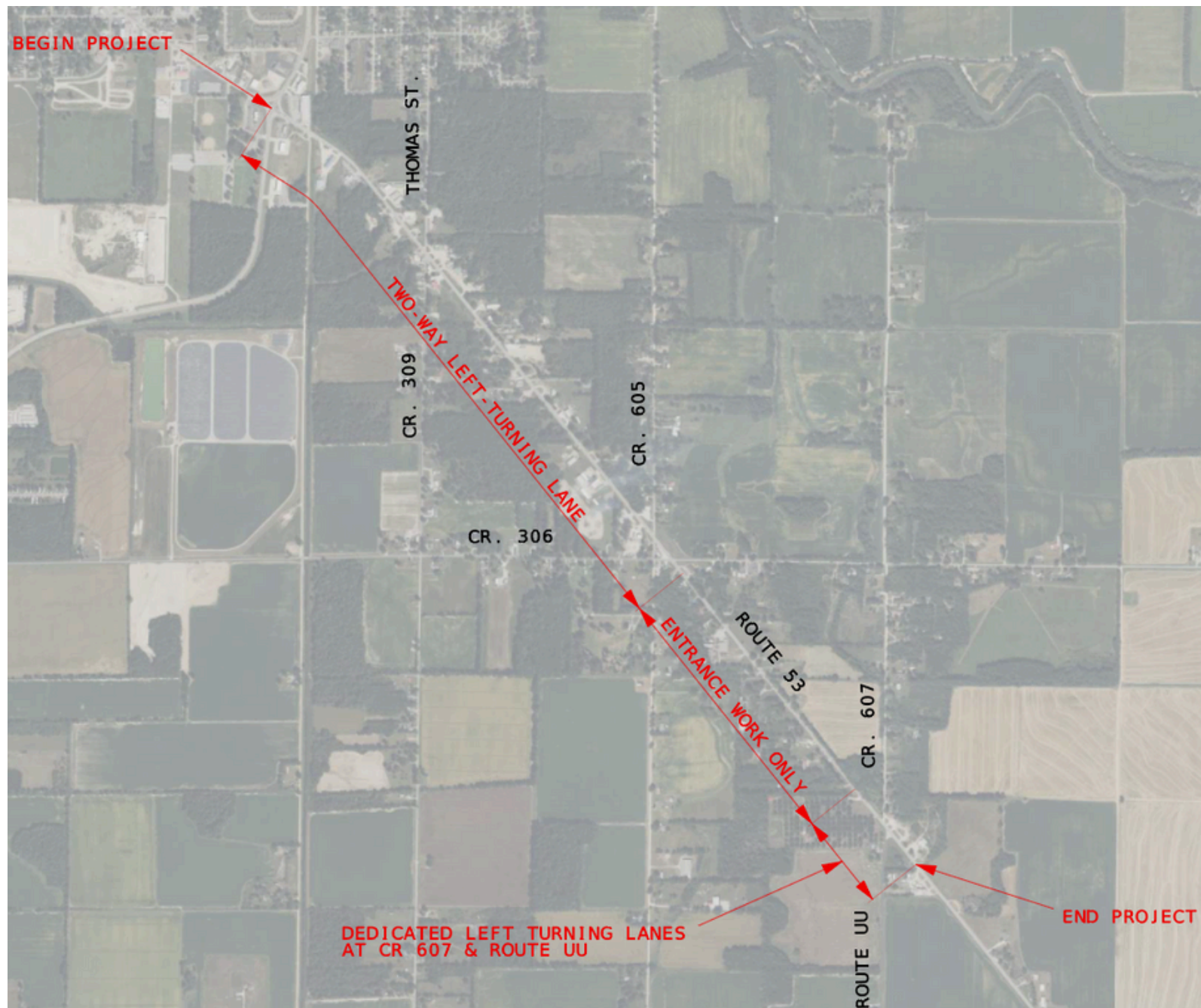
MISSOURI DEPARTMENT OF TRANSPORTATION | SOUTHEAST DISTRICT

1-888-ASK MODOT (275-6636) | 2675 N. MAIN ST. SIKESTON MO | [MODOT.ORG/53POPLARBLUFF](https://modot.org/53POPLARBLUFF)

PROJECT MANAGER: CHRIS CROCKER (573) 380-1658 | AREA ENGINEER: KAITLYN BOWER (573) 380-0744

ADDING TURN LANES & ACCESS MANAGEMENT

ROUTE 53 IN POPLAR BLUFF, MO



SCAN ME



SCAN TO VIEW MORE DETAILS

To use the QR code, open your smartphone's camera app and point it at the code, ensuring it's centered and steady. A notification or link will appear on your screen, which you then tap to open. This will display more details, including plans for access management.



MISSOURI DEPARTMENT OF TRANSPORTATION | SOUTHEAST DISTRICT

1-888-ASK MODOT (275-6636) | 2675 N. MAIN ST. SIKESTON MO | MODOT.ORG/53POPLARBLUFF

PROJECT MANAGER: CHRIS CROCKER (573) 380-1658 | AREA ENGINEER: KAITLYN BOWER (573) 380-0744