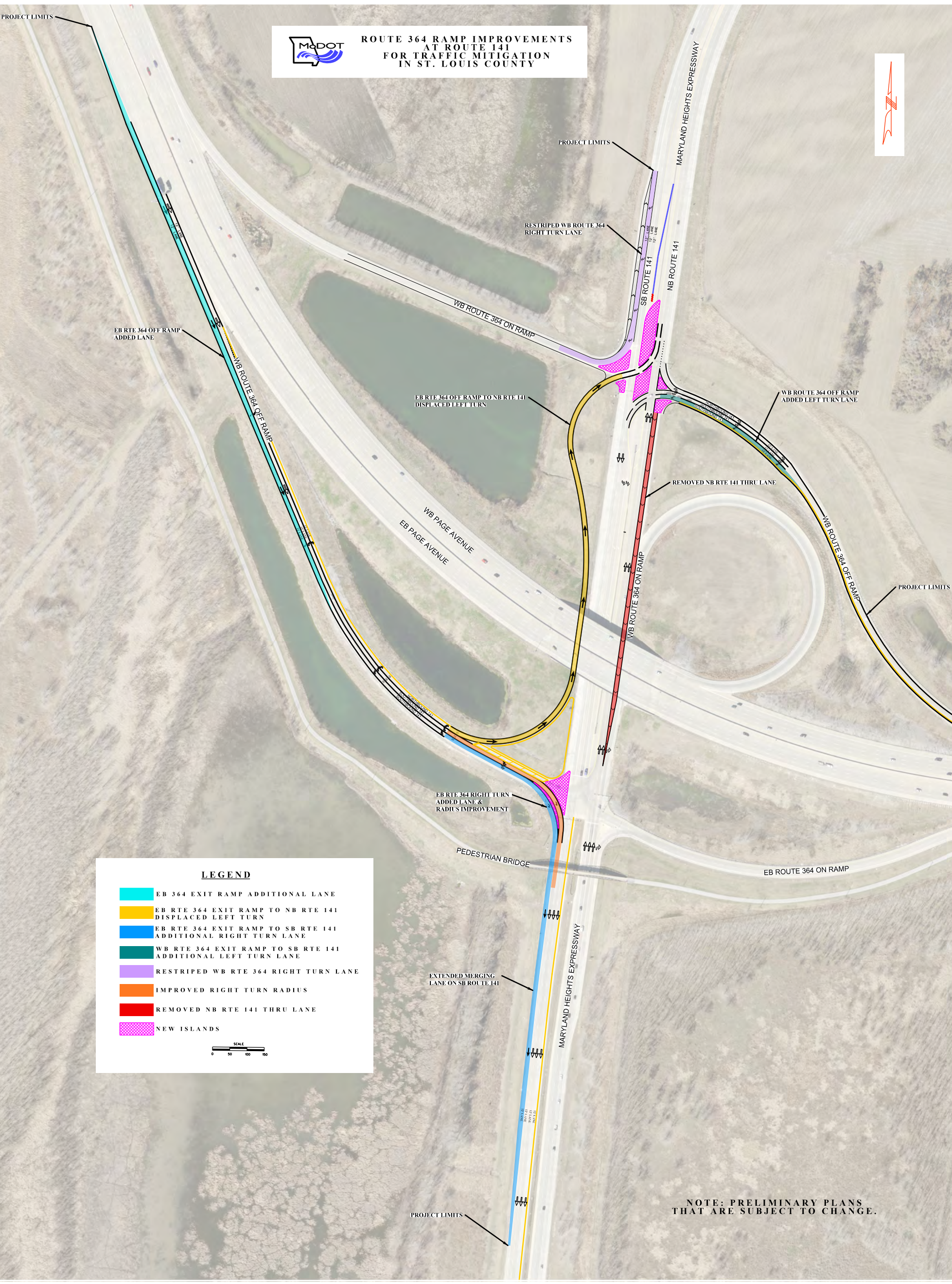


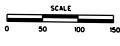


**ROUTE 364 RAMP IMPROVEMENTS
AT ROUTE 141
FOR TRAFFIC MITIGATION
IN ST. LOUIS COUNTY**



LEGEND

- EB 364 EXIT RAMP ADDITIONAL LANE
- EB RTE 364 EXIT RAMP TO NB RTE 141 DISPLACED LEFT TURN
- EB RTE 364 EXIT RAMP TO SB RTE 141 ADDITIONAL RIGHT TURN LANE
- WB RTE 364 EXIT RAMP TO SB RTE 141 ADDITIONAL LEFT TURN LANE
- RESTRIPE WB RTE 364 RIGHT TURN LANE
- IMPROVED RIGHT TURN RADIUS
- REMOVED NB RTE 141 THRU LANE
- NEW ISLANDS



**NOTE: PRELIMINARY PLANS
THAT ARE SUBJECT TO CHANGE.**