

Project Update

Route 115

Tabitha Locke, North Area Engineer

Dan Savageau, Project Manager

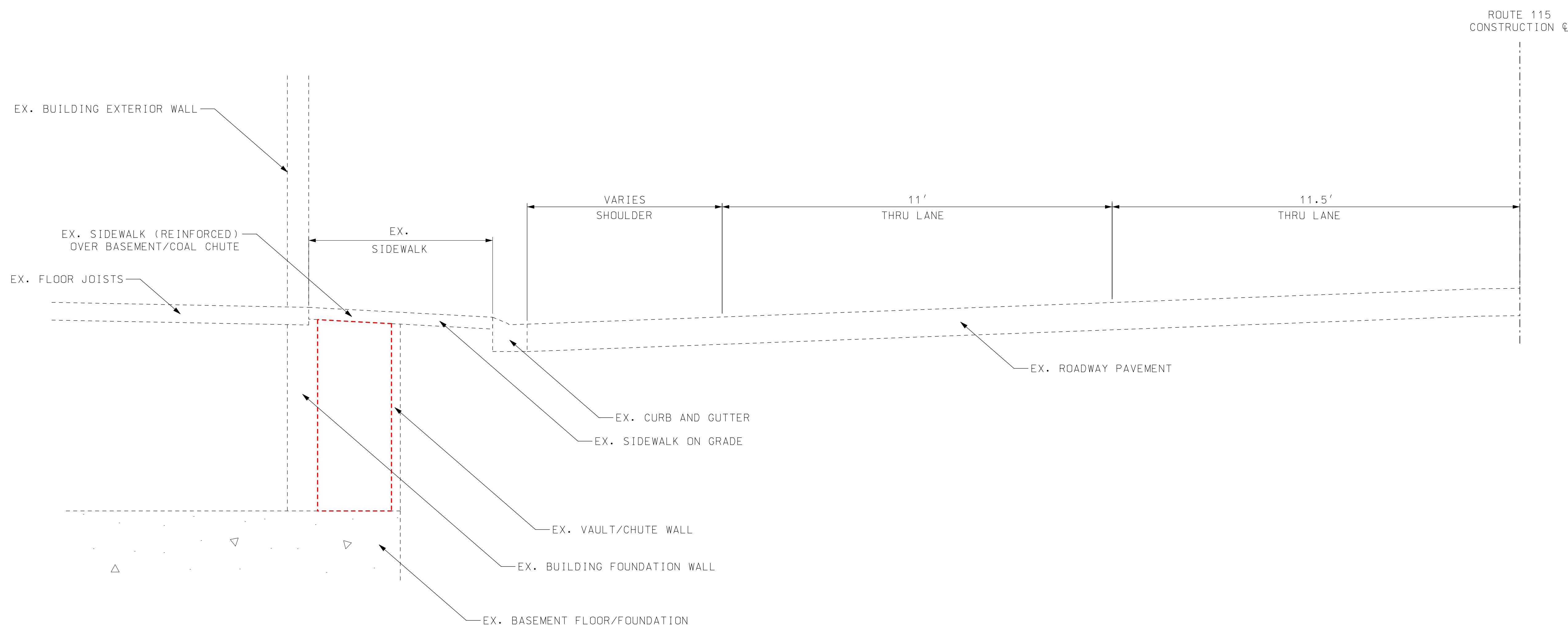
July 2026

- Roadway improvements between Lucas-Hunt Road and St. Louis City Limits
- Project Cost - \$5.8 Million
- Public Meeting held in January 2023
- Construction began in 2025



Construction Updates

- Construction Paused due to Basements/Voids/Coal Chutes found underneath existing sidewalk
- Structural Survey Part 1 – Ground Penetrating Radar to determine voids **(Completed)**
- Structural Survey Part 2 – Inspection of Buildings and Basements/Coal Chutes **(Completed)**
- Public Meeting #2 – Construction Update – Consider Lane Reduction From Ridgedale to St. Louis City Limits **(We Are Here – July 2026)**
- Design of Structural Repairs over any Basements/Voids/Coal Chutes – To Be Determined
- Acquire New Temporary Construction Easements if additional access to Basements/Voids/Coal Chutes is required – To Be Determined
- Construction Completion – To Be Determined




DURING CONSTRUCTION, BASEMENTS/COAL CHUTES/VOIDS WERE FOUND UNDER EXISTING SIDEWALK
 BASEMENT DETAIL

DATE PREPARED 6/26/2026	
ROUTE 115	STATE MO
DISTRICT SL	SHEET NO.
COUNTY ST. LOUIS	
JOB NO. J6S3416/J6S3416B	
CONTRACT ID.	
PROJECT NO.	
BRIDGE NO.	

DESCRIPTION	DATE

MISSOURI HIGHWAYS AND TRANSPORTATION COMMISSION



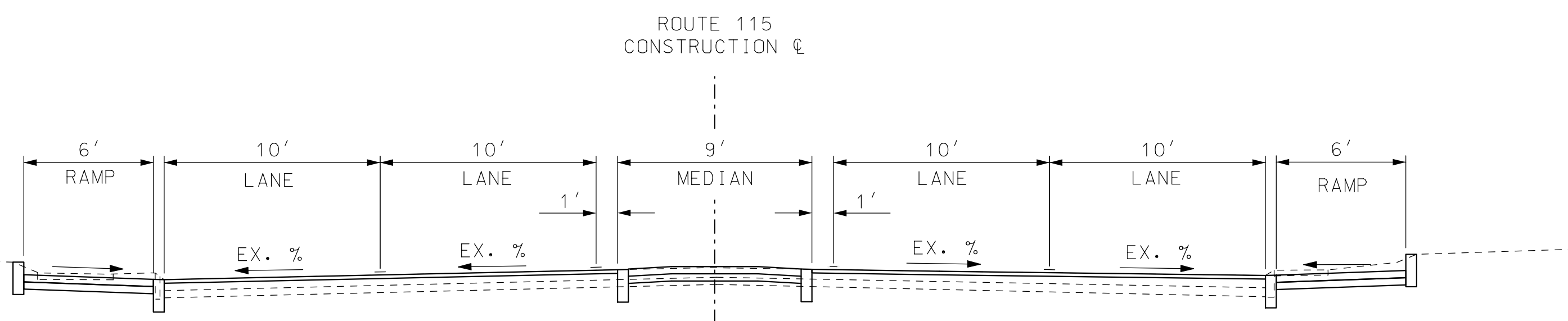
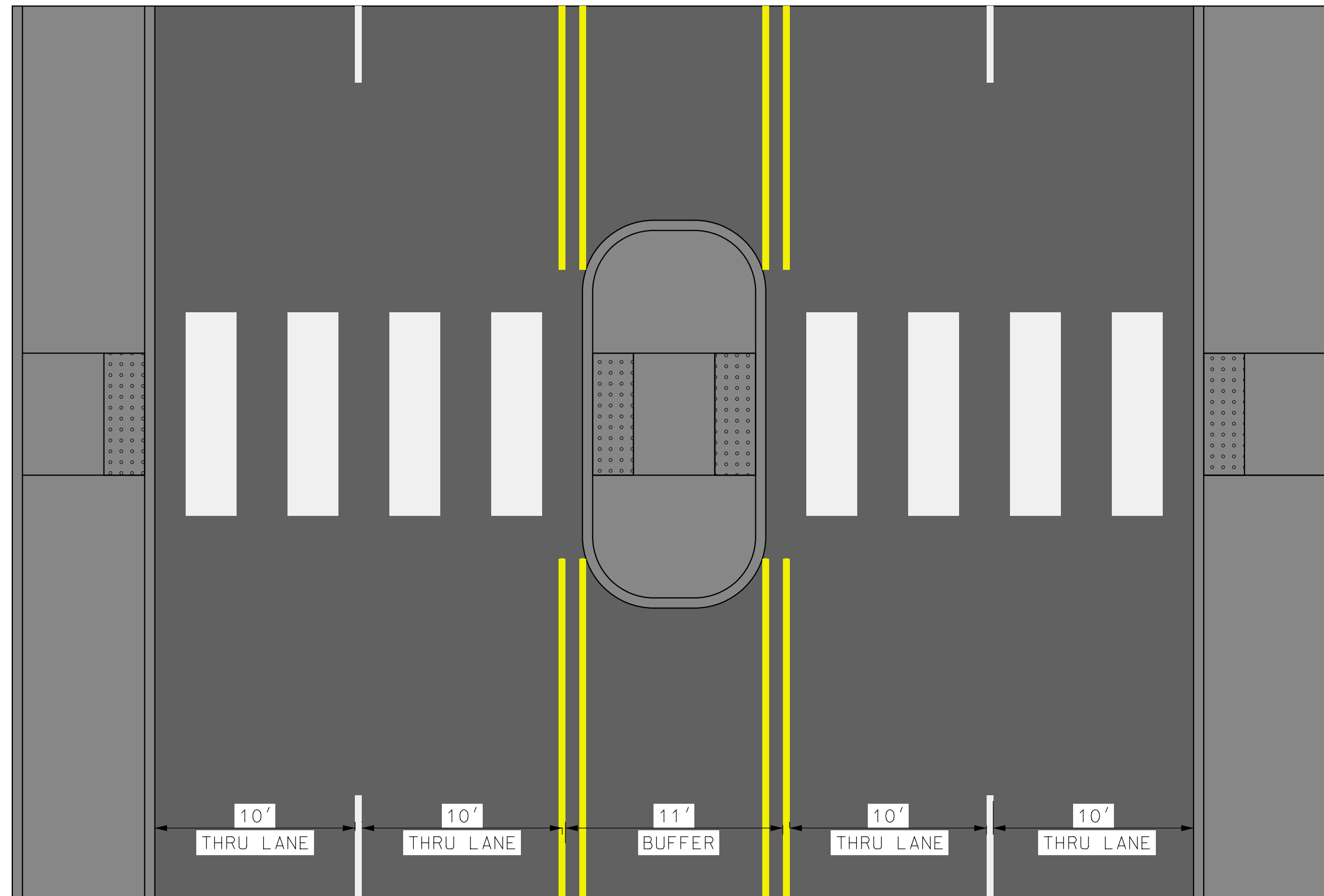
105 WEST CAPITOL
 JEFFERSON CITY, MO 65102
 1-888-ASK-MODOT (1-888-275-6636)



3701 S. LINDBERGH BLVD, SUITE 100
 ST. LOUIS, MO 63117
 www.twm-inc.com
 MISSOURI CERT. OF AUTHORITY: 001528

TYPICAL SECTION
 ROUTE 115
 BASEMENT DETAIL

IF A SEAL IS PRESENT ON THIS SHEET IT HAS BEEN ELECTRONICALLY SEALED AND DATED.



TYPICAL SECTION ROUTE 115
CURRENT MID-BLOCK CROSSING

PROS
 - MAINTAINS 2 LANES IN EACH DIRECTION ON ROUTE 115 FROM ROUTE U (LUCAS-HUNT) TO JENNINGS STATION ROAD

CONS
 - CONSTRUCTION ON HOLD UNTIL NEW TEMPORARY CONSTRUCTION EASEMENTS ARE ACQUIRED
 - NO ADDITIONAL BUS PULL-OUT AREA EAST OF FRANCIS AVENUE
 - LONGER CROSSWALK DISTANCE AT MID-BLOCK CROSSINGS WITH PEDESTRIANS CROSSING FOUR LANES OF TRAFFIC

DATE PREPARED 6/26/2026	
ROUTE 115	STATE MO
DISTRICT SL	SHEET NO.
COUNTY ST. LOUIS	
JOB NO. J6S3416/J6S3416B	
CONTRACT ID.	
PROJECT NO.	
BRIDGE NO.	

DATE	DESCRIPTION

MISSOURI HIGHWAYS AND TRANSPORTATION COMMISSION

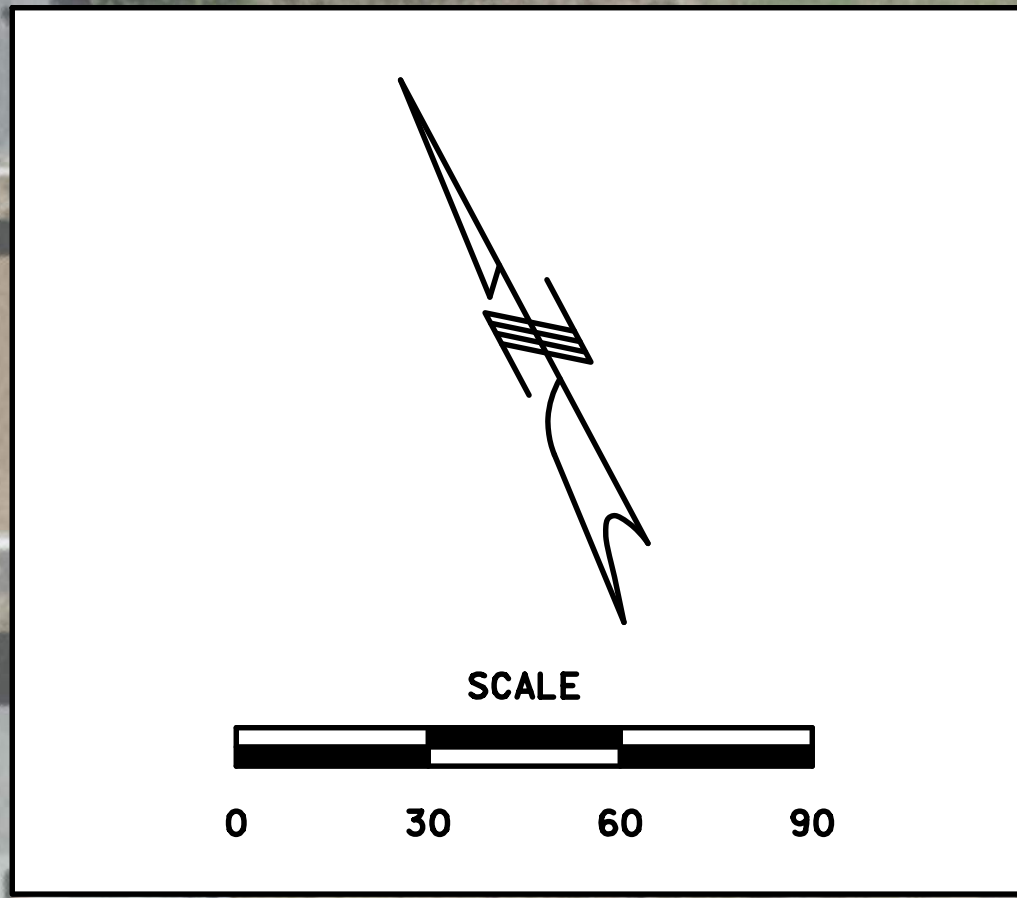
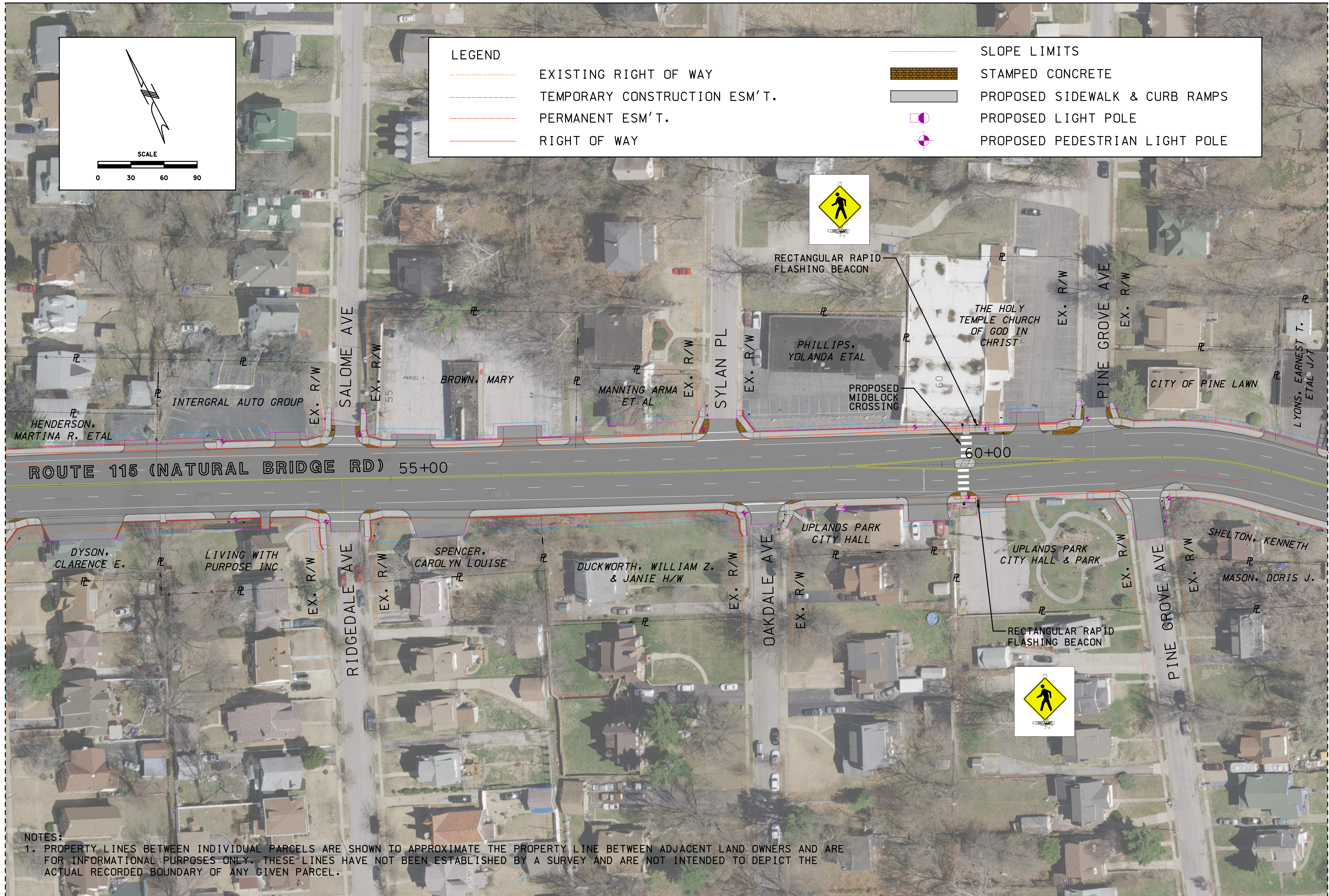
105 WEST CAPITOL
JEFFERSON CITY, MO 65102
1-888-ASK-MODOT (1-888-275-6636)

3701 S. LINDBERGH BLVD, SUITE 100
ST. LOUIS, MO 63117
www.twm-inc.com
MISSOURI CERT. OF AUTHORITY: 001528

TYPICAL SECTION
ROUTE 115
CURRENT MID-BLOCK XING

J6S3416 - ROUTE 115, NATURAL BRIDGE RD. (ST. LOUIS CO.) - AWARDED PLAN CONCEPT

PINE LAWN & UPLANDS PARK



LEGEND	
	EXISTING RIGHT OF WAY
	TEMPORARY CONSTRUCTION ESM'T.
	PERMANENT ESM'T.
	RIGHT OF WAY
	SLOPE LIMITS
	STAMPED CONCRETE
	PROPOSED SIDEWALK & CURB RAMPS
	PROPOSED LIGHT POLE
	PROPOSED PEDESTRIAN LIGHT POLE

ROUTE 115 (NATURAL BRIDGE RD) 55+00

60+00

NOTES:
 1. PROPERTY LINES BETWEEN INDIVIDUAL PARCELS ARE SHOWN TO APPROXIMATE THE PROPERTY LINE BETWEEN ADJACENT LAND OWNERS AND ARE FOR INFORMATIONAL PURPOSES ONLY. THESE LINES HAVE NOT BEEN ESTABLISHED BY A SURVEY AND ARE NOT INTENDED TO DEPICT THE ACTUAL RECORDED BOUNDARY OF ANY GIVEN PARCEL.

DATE PREPARED 7/1/2026	
ROUTE 115	STATE MO
DISTRICT SL	SHEET NO. 1
COUNTY ST. LOUIS	
JOB NO. J6S3416	
CONTRACT ID.	
PROJECT NO.	
BRIDGE NO.	

DATE	DESCRIPTION

MISSOURI HIGHWAYS AND TRANSPORTATION COMMISSION

105 WEST CAPITOL
 JEFFERSON CITY, MO 65102
 1-888-ASK-MODOT (1-888-275-6636)

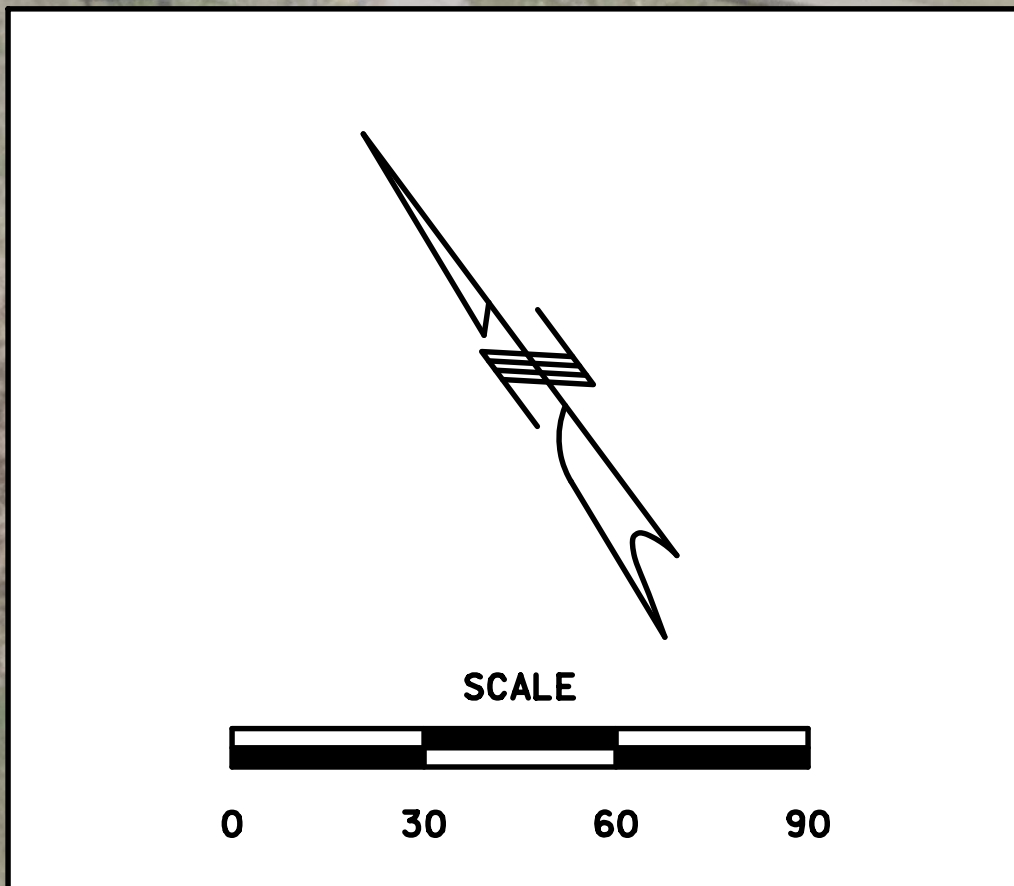
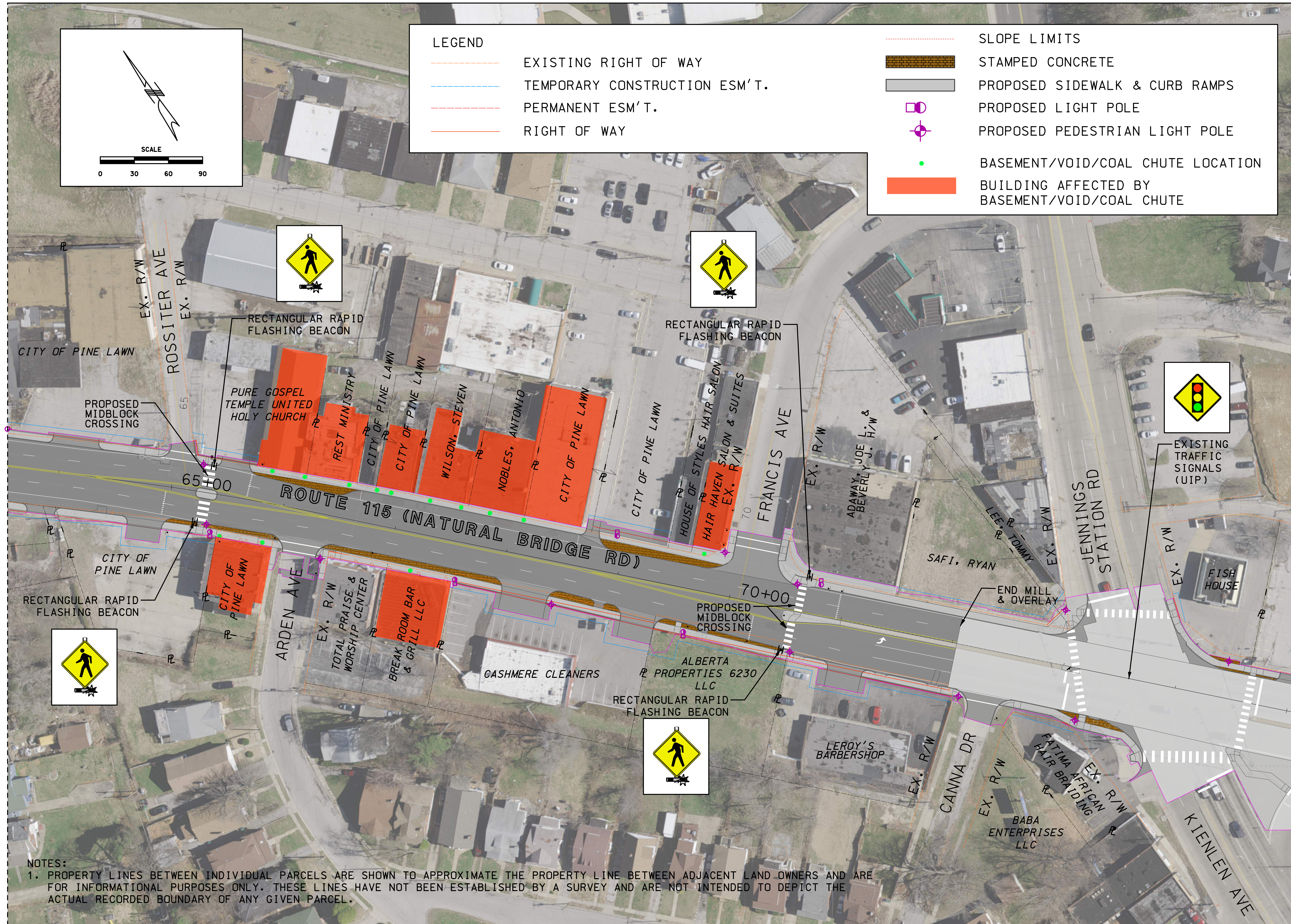
TWM
 ENGINEERING
 GEOSPATIAL SERVICES
 720 OLIVE STREET, SUITE 200A
 ST. LOUIS, MO 63101
 (314) 241-6300
 www.twm-inc.com
 MISSOURI CERT. OF AUTHORITY: 001528

ROUTE 115
 ALTERNATIVE CONCEPT PLAN
 SHEET 1 OF 3

MATCHLINE TO BOARD 2 OF 3

J6S3416 - ROUTE 115, NATURAL BRIDGE RD. (ST. LOUIS CO.) - AWARDED PLAN CONCEPT

PINE LAWN & UPLANDS PARK



LEGEND	
	EXISTING RIGHT OF WAY
	TEMPORARY CONSTRUCTION ESM'T.
	PERMANENT ESM'T.
	RIGHT OF WAY
	SLOPE LIMITS
	STAMPED CONCRETE
	PROPOSED SIDEWALK & CURB RAMPS
	PROPOSED LIGHT POLE
	PROPOSED PEDESTRIAN LIGHT POLE
	BASEMENT/VOID/COAL CHUTE LOCATION
	BUILDING AFFECTED BY BASEMENT/VOID/COAL CHUTE

MATCHLINE TO BOARD 1 OF 3

MATCHLINE TO BOARD 3 OF 3

NOTES:
 1. PROPERTY LINES BETWEEN INDIVIDUAL PARCELS ARE SHOWN TO APPROXIMATE THE PROPERTY LINE BETWEEN ADJACENT LAND OWNERS AND ARE FOR INFORMATIONAL PURPOSES ONLY. THESE LINES HAVE NOT BEEN ESTABLISHED BY A SURVEY AND ARE NOT INTENDED TO DEPICT THE ACTUAL RECORDED BOUNDARY OF ANY GIVEN PARCEL.

DATE PREPARED 7/1/2026	
ROUTE 115	STATE MO
DISTRICT SL	SHEET NO. 2
COUNTY ST. LOUIS	
JOB NO. J6S3416	
CONTRACT ID.	
PROJECT NO.	
BRIDGE NO.	

DATE	DESCRIPTION

MISSOURI HIGHWAYS AND TRANSPORTATION COMMISSION

105 WEST CAPITOL
 JEFFERSON CITY, MO 65102
 1-888-ASK-MODOT (1-888-275-6636)

TWM
 ENGINEERING
 GEOSPATIAL SERVICES
 720 OLIVE STREET, SUITE 200A
 ST. LOUIS, MO 63101
 (314) 241-6300
 www.twm-inc.com
 MISSOURI CERT. OF AUTHORITY: 001528

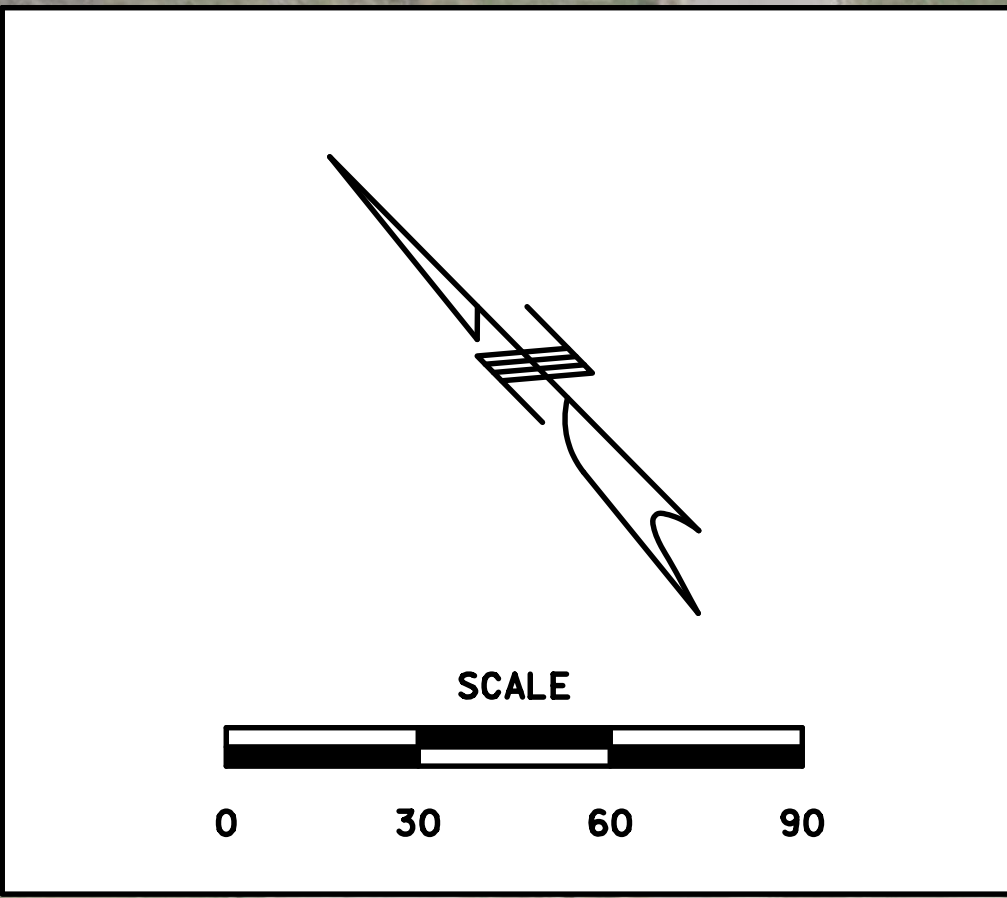
ROUTE 115
 ALTERNATIVE CONCEPT PLAN
 SHEET 2 OF 3

J6S3416 - ROUTE 115, NATURAL BRIDGE RD. (ST. LOUIS CO.) - AWARDED PLAN CONCEPT

PINE LAWN & UPLANDS PARK



LEGEND	
	EXISTING RIGHT OF WAY
	TEMPORARY CONSTRUCTION ESM'T.
	PERMANENT ESM'T.
	RIGHT OF WAY
	SLOPE LIMITS
	STAMPED CONCRETE
	PROPOSED SIDEWALK & CURB RAMPS
	PROPOSED LIGHT POLE
	PROPOSED PEDESTRIAN LIGHT POLE



MATCHLINE TO BOARD 2 OF 3

NOTES:
 1. PROPERTY LINES BETWEEN INDIVIDUAL PARCELS ARE SHOWN TO APPROXIMATE THE PROPERTY LINE BETWEEN ADJACENT LAND OWNERS AND ARE FOR INFORMATIONAL PURPOSES ONLY. THESE LINES HAVE NOT BEEN ESTABLISHED BY A SURVEY AND ARE NOT INTENDED TO DEPICT THE ACTUAL RECORDED BOUNDARY OF ANY GIVEN PARCEL.

DATE PREPARED 7/1/2026	
ROUTE 115	STATE MO
DISTRICT SL	SHEET NO. 3
COUNTY ST. LOUIS	
JOB NO. J6S3416	
CONTRACT ID.	
PROJECT NO.	
BRIDGE NO.	

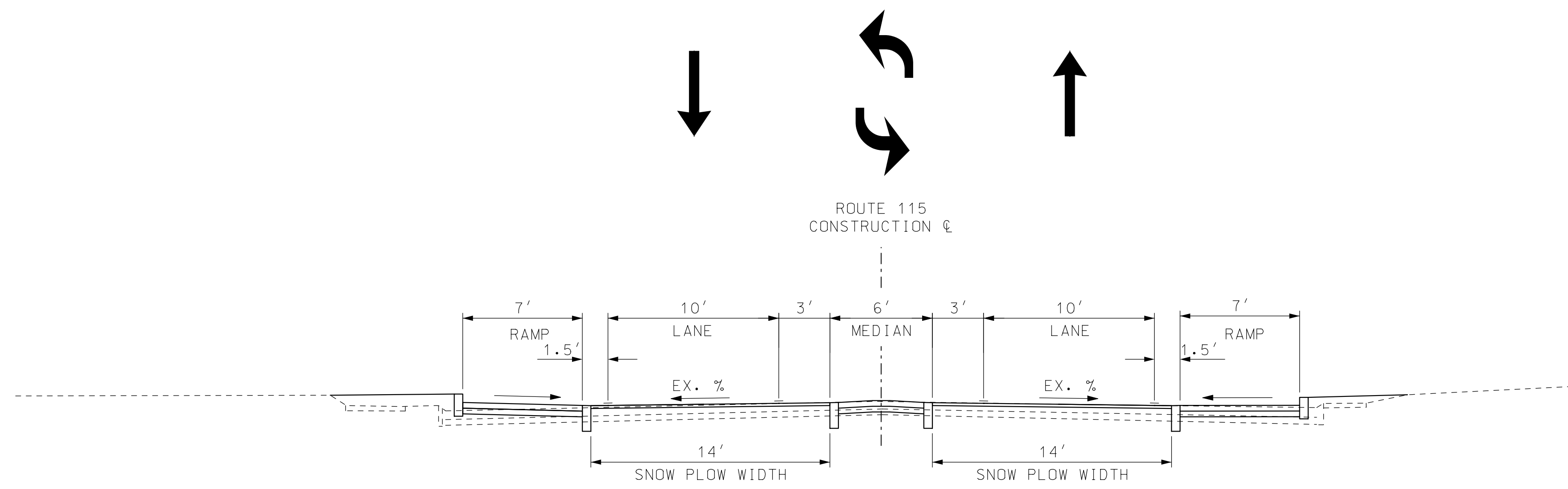
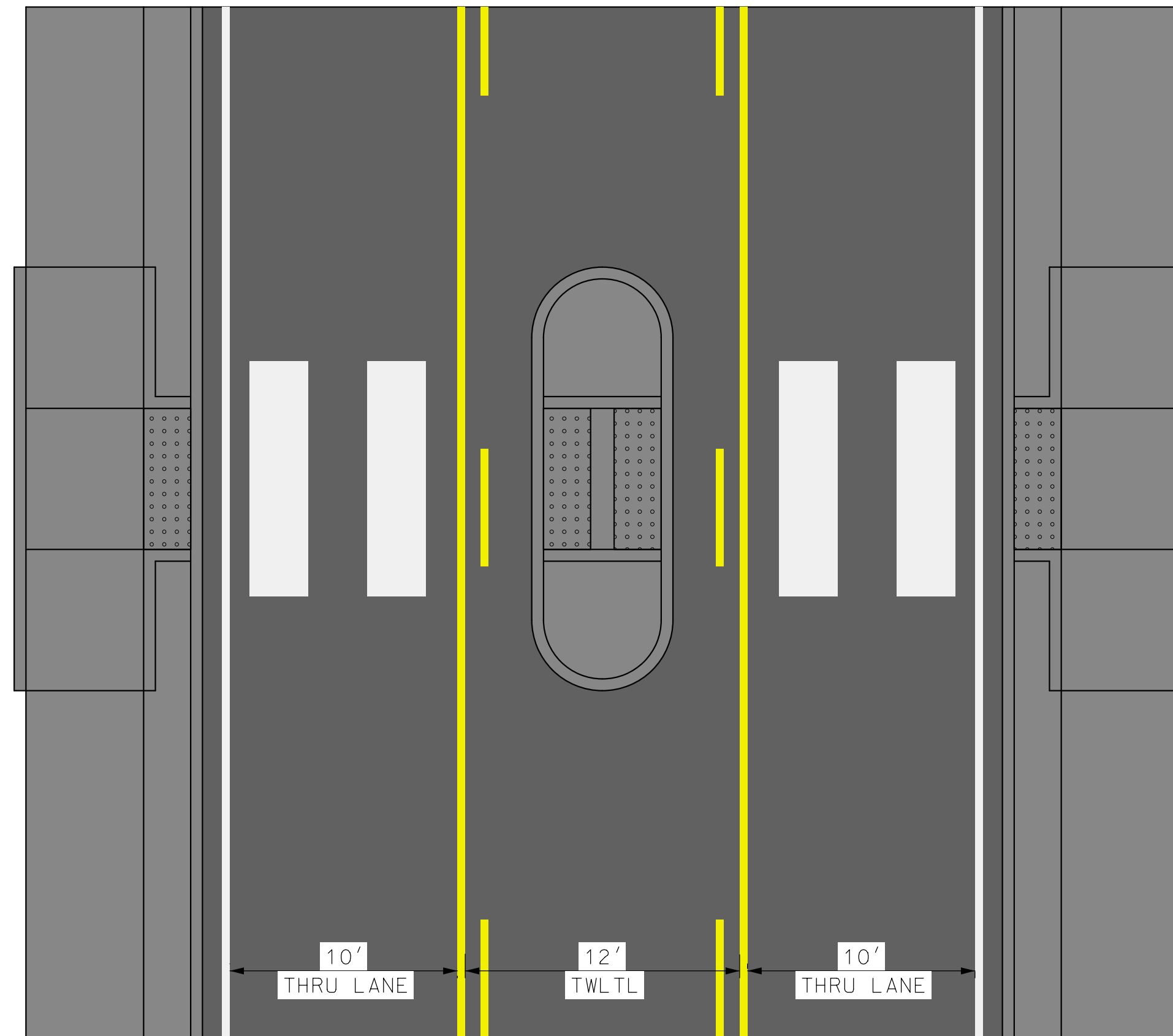
DATE	DESCRIPTION

MISSOURI HIGHWAYS AND TRANSPORTATION COMMISSION

105 WEST CAPITOL
JEFFERSON CITY, MO 65102
1-888-ASK-MODOT (1-888-275-6636)

TWM
ENGINEERING
GEOSPATIAL SERVICES
720 OLIVE STREET, SUITE 200A
ST. LOUIS, MO 63101
(314) 241-6300
www.twm-inc.com
MISSOURI CERT. OF AUTHORITY: 001528

ROUTE 115
ALTERNATIVE CONCEPT PLAN
SHEET 3 OF 3



TYPICAL SECTION ROUTE 115
LANE REDUCTION ALTERNATIVE CONCEPT: MID-BLOCK CROSSING

- PROS
- INCREASED PEDESTRIAN SAFETY DUE TO REDUCED CROSSWALK DISTANCE AT MID-BLOCK CROSSINGS WITH PEDESTRIANS CROSSING ONLY TWO LANES OF TRAFFIC
 - CONSTRUCTION CAN CONTINUE ON SIDEWALK PATH AS TEMPORARY CONSTRUCTION EASEMENTS ARE ACQUIRED
 - INCREASED SAFETY FOR BUS RIDERS DUE TO THE ADDITION OF BUS PULL-OUT AREA EAST OF FRANCIS AVENUE
 - LANE REDUCTIONS TYPICALLY REDUCE SPEEDS ALONG A CORRIDOR

- CONS
- CHANGE FROM EXISTING TEMPLATE

DATE PREPARED 6/26/2026	
ROUTE 115	STATE MO
DISTRICT SL	SHEET NO.
COUNTY ST. LOUIS	
JOB NO. J6S3416/J6S3416B	
CONTRACT ID.	
PROJECT NO.	
BRIDGE NO.	

DESCRIPTION	DATE

MISSOURI HIGHWAYS AND TRANSPORTATION COMMISSION

105 WEST CAPITOL
JEFFERSON CITY, MO 65102
1-888-ASK-MODOT (1-888-275-6636)

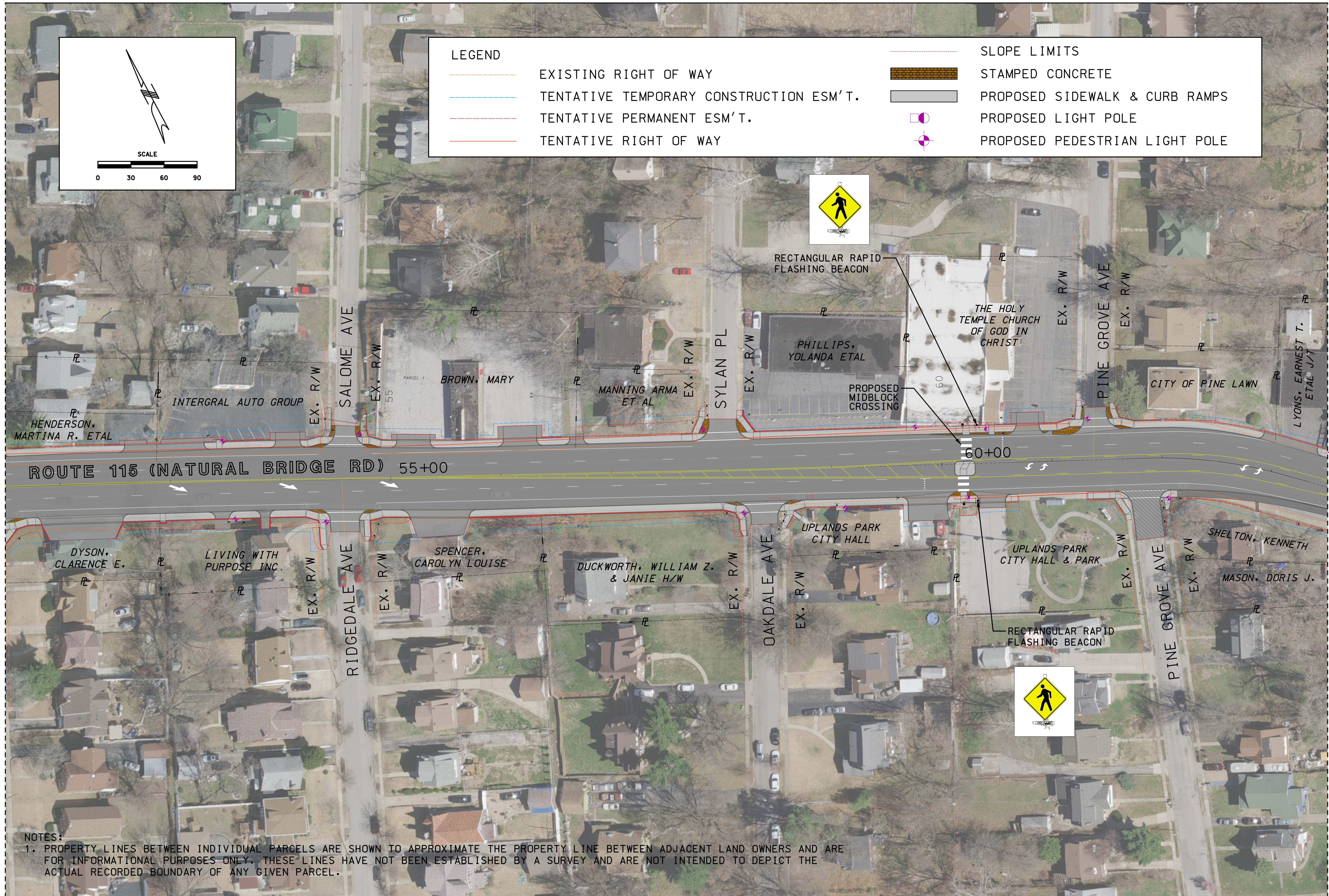
3701 S. LINDBERGH BLVD, SUITE 100
ST. LOUIS, MISSOURI 63117
www.twm-inc.com
MISSOURI CERT. OF AUTHORITY: 001528

TYPICAL SECTION
ROUTE 115
ALTERNATIVE CONCEPT

IF A SEAL IS PRESENT ON THIS SHEET IT HAS BEEN ELECTRONICALLY SEALED AND DATED.

J6S3416 - ROUTE 115, NATURAL BRIDGE RD. (ST. LOUIS CO.) - ALTERNATIVE CONCEPT

PINE LAWN & UPLANDS PARK



DATE PREPARED 6/26/2026	
ROUTE 115	STATE MO
DISTRICT SL	SHEET NO. 1
COUNTY ST. LOUIS	
JOB NO. J6S3416	
CONTRACT ID.	
PROJECT NO.	
BRIDGE NO.	

DATE	DESCRIPTION

MISSOURI HIGHWAYS AND TRANSPORTATION COMMISSION

MoDOT

105 WEST CAPITOL
 JEFFERSON CITY, MO 65102
 1-888-ASK-MODOT (1-888-275-6636)

TWM

ENGINEERING
 GEOSPATIAL SERVICES

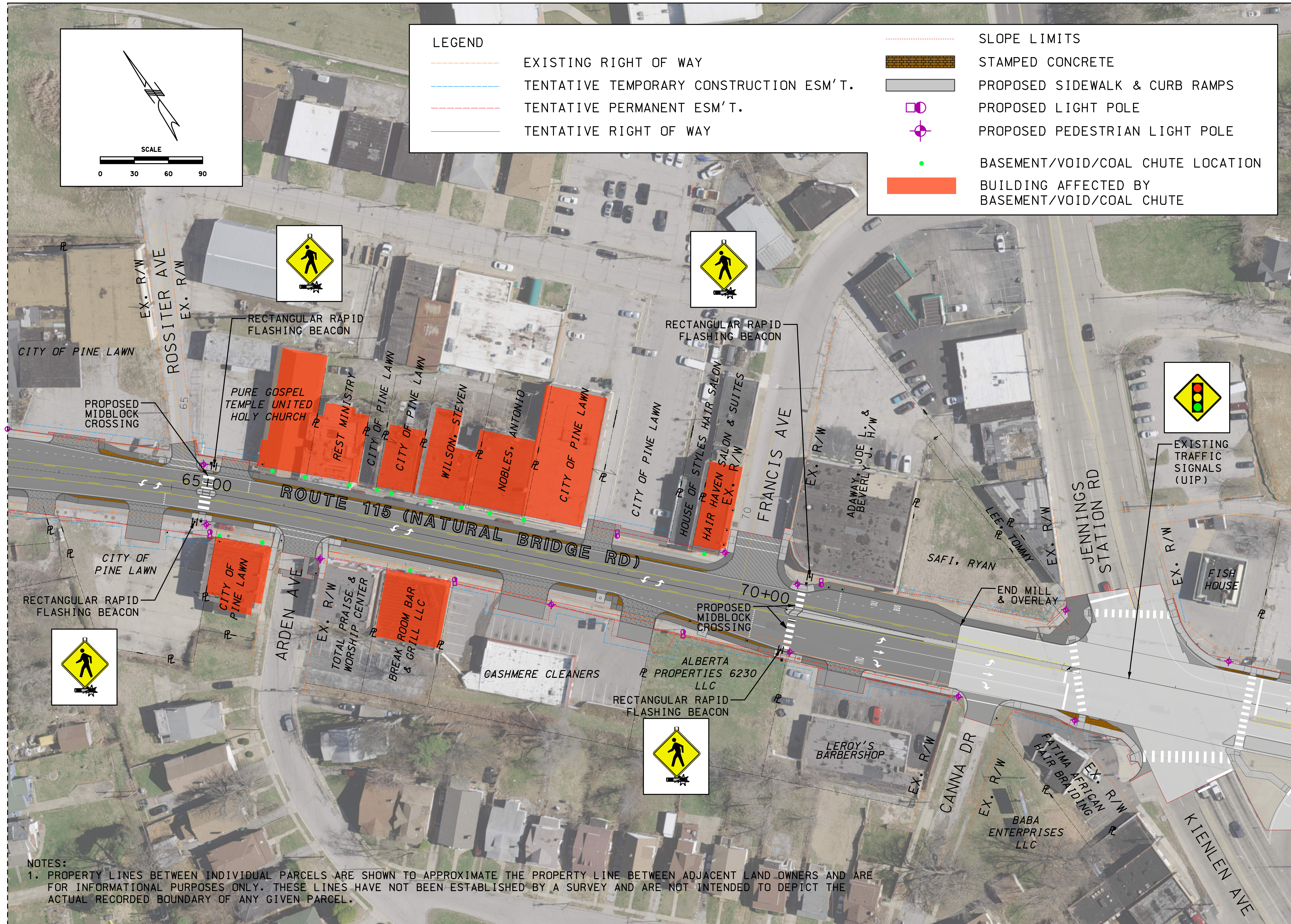
720 OLIVE STREET, SUITE 200A
 ST. LOUIS, MO 63101
 (314) 241-6300
 www.twm-inc.com
 MISSOURI CERT. OF AUTHORITY: 001528

ROUTE 115
 ALTERNATIVE CONCEPT PLAN
 SHEET 1 OF 3

MATCHLINE TO BOARD 2 OF 3

J6S3416 - ROUTE 115, NATURAL BRIDGE RD. (ST. LOUIS CO.) - ALTERNATIVE CONCEPT

PINE LAWN & UPLANDS PARK



DATE PREPARED 6/26/2026	
ROUTE 115	STATE MO
DISTRICT SL	SHEET NO. 2
COUNTY ST. LOUIS	
JOB NO. J6S3416	
CONTRACT ID.	
PROJECT NO.	
BRIDGE NO.	

DATE	DESCRIPTION

MISSOURI HIGHWAYS AND TRANSPORTATION COMMISSION

105 WEST CAPITOL
JEFFERSON CITY, MO 65102
1-888-ASK-MODOT (1-888-275-6636)

TWM ENGINEERING GEOSPATIAL SERVICES
720 OLIVE STREET, SUITE 200A
ST. LOUIS, MO 63101
(314) 241-6300
www.twm-inc.com
MISSOURI CERT. OF AUTHORITY: 001528

ROUTE 115
ALTERNATIVE CONCEPT PLAN
SHEET 2 OF 3

J6S3416 - ROUTE 115, NATURAL BRIDGE RD. (ST. LOUIS CO.) - ALTERNATIVE CONCEPT

PINE LAWN & UPLANDS PARK

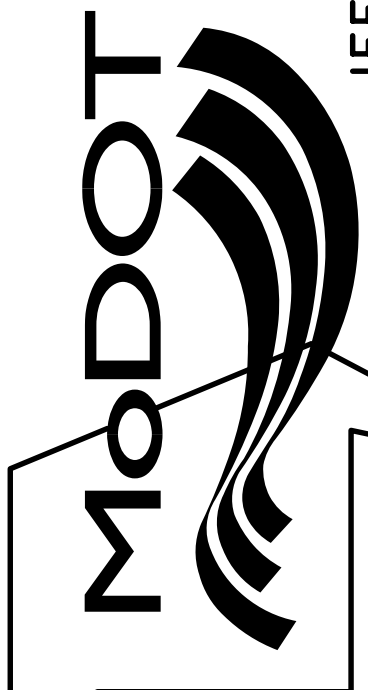


NOTES:
 1. PROPERTY LINES BETWEEN INDIVIDUAL PARCELS ARE SHOWN TO APPROXIMATE THE PROPERTY LINE BETWEEN ADJACENT LAND OWNERS AND ARE FOR INFORMATIONAL PURPOSES ONLY. THESE LINES HAVE NOT BEEN ESTABLISHED BY A SURVEY AND ARE NOT INTENDED TO DEPICT THE ACTUAL RECORDED BOUNDARY OF ANY GIVEN PARCEL.

DATE PREPARED 6/26/2026	
ROUTE 115	STATE MO
DISTRICT SL	SHEET NO. 3
COUNTY ST. LOUIS	
JOB NO. J6S3416	
CONTRACT ID.	
PROJECT NO.	
BRIDGE NO.	

DATE	DESCRIPTION

MISSOURI HIGHWAYS AND TRANSPORTATION COMMISSION



105 WEST CAPITOL
 JEFFERSON CITY, MO 65102
 1-888-ASK-MODOT (1-888-275-6636)



TWM
 ENGINEERING
 GEOSPATIAL SERVICES
 720 OLIVE STREET, SUITE 200A
 ST. LOUIS, MO 63101
 (314) 241-6300
 www.twm-hrc.com
 MISSOURI CERT. OF AUTHORITY: 001528

ROUTE 115
 ALTERNATIVE CONCEPT PLAN
 SHEET 3 OF 3