

CONTACT US

Project Manager Jason Williams
jason.williams@modot.mo.gov
(573) 472-5290

Area Engineer Dave Wyman
david.wyman@modot.mo.gov
(573) 840-9781

Transportation Project Designer David Blalock
david.blalock@modot.mo.gov
(573) 472-5295

How should motorists navigate the roundabout?

As you approach the intersection, look left. Yield to all lanes of traffic in the roundabout.

Once you safely enter the roundabout, follow the signs and pavement markings and do not stop for vehicles waiting to enter the roundabout.

Continue around the roundabout until you approach your exit, signal and then exit the roundabout.

How will trucks in the area navigate the roundabout?

Commercial vehicles can navigate the roundabout in nearly the same manner as a passenger vehicle. However, large trucks will sometimes need to utilize the truck apron. The truck apron is a raised portion in the center of the roundabout that discourages use by passenger vehicles, but allows the back wheels of a truck to easily ride-up to aid in completing turns.

What should motorists do if an emergency vehicle enters the roundabout?

If an emergency vehicle approaches before you enter the roundabout, pull to the right and let the emergency vehicle pass.

If an emergency vehicle enters the roundabout while you are already circulating, do not stop. Motorists need to continue through the roundabout and pull off onto the shoulder of the roadway immediately after exiting.

The Missouri Department of Transportation currently plans to construct a four-leg roundabout at the intersection of Route PP and Township Line Road in Poplar Bluff. This configuration will include the relocation of County Road 448 and the addition of a turn lane on Route PP.

What are the benefits of constructing a roundabout in this location?

A roundabout will help traffic flow more smoothly in addition to improving safety. Roundabouts have fewer conflict points, or spots where vehicles could collide, than signalized intersections. The reduced number of conflict points, combined with slower speeds and calmer traffic, has been found to reduce the number of severe crashes. Severe crashes typically occur with broadside (T-bone) or head on collisions.

What are the benefits of doing a four-leg configuration instead of a five-leg roundabout?

With a four-leg roundabout, staging of work is greatly simplified, which should result in less inconvenience to the traveling public during construction, as well as reduced construction time. In addition, right of way acquisition for the design will primarily involve open land acquisition—lessening the impact to existing improvements in the area. It will not impact the gas pipeline along the south side of Route PP.

The completed project will also be easier to navigate, since this design includes fewer legs.

What is the anticipated timeframe for the project?

Construction is expected to occur in spring 2015. The roundabout will be constructed in approximately four to six months.

How will construction of the roundabout impact traffic?

The roundabout will be built in stages in order to keep Route PP and the side roads open during construction. The four-leg design will allow a large portion of the roundabout to be constructed off of the existing roadways; however, at some point each approaching route will have to be tied into the roundabout, which may require brief closures and disruptions to traffic.

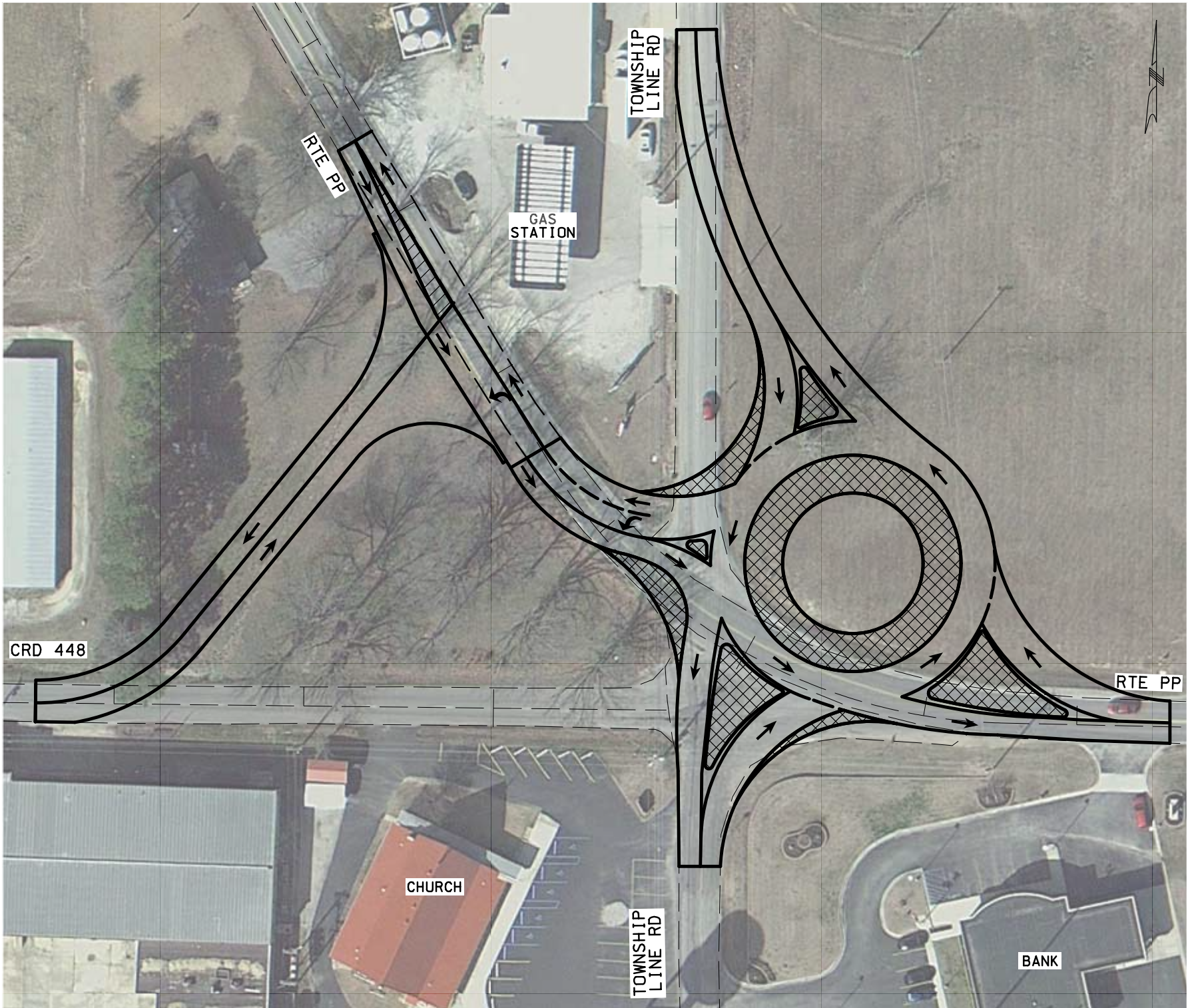


Missouri Department of Transportation | Southeast District
2675 N. Main Street | Sikeston | MO 63801 | www.modot.org/southeast



BUTLER COUNTY
Poplar Bluff
Route PP/Township Line Road
Proposed Roundabout

Public Hearing December 19, 2013



RTE PP

TOWNSHIP
LINE RD

GAS
STATION

CRD 448

CHURCH

TOWNSHIP
LINE RD

BANK

RTE PP