

Route 142 over Drainage Ditch 2

COMMENT ON THIS PROJECT

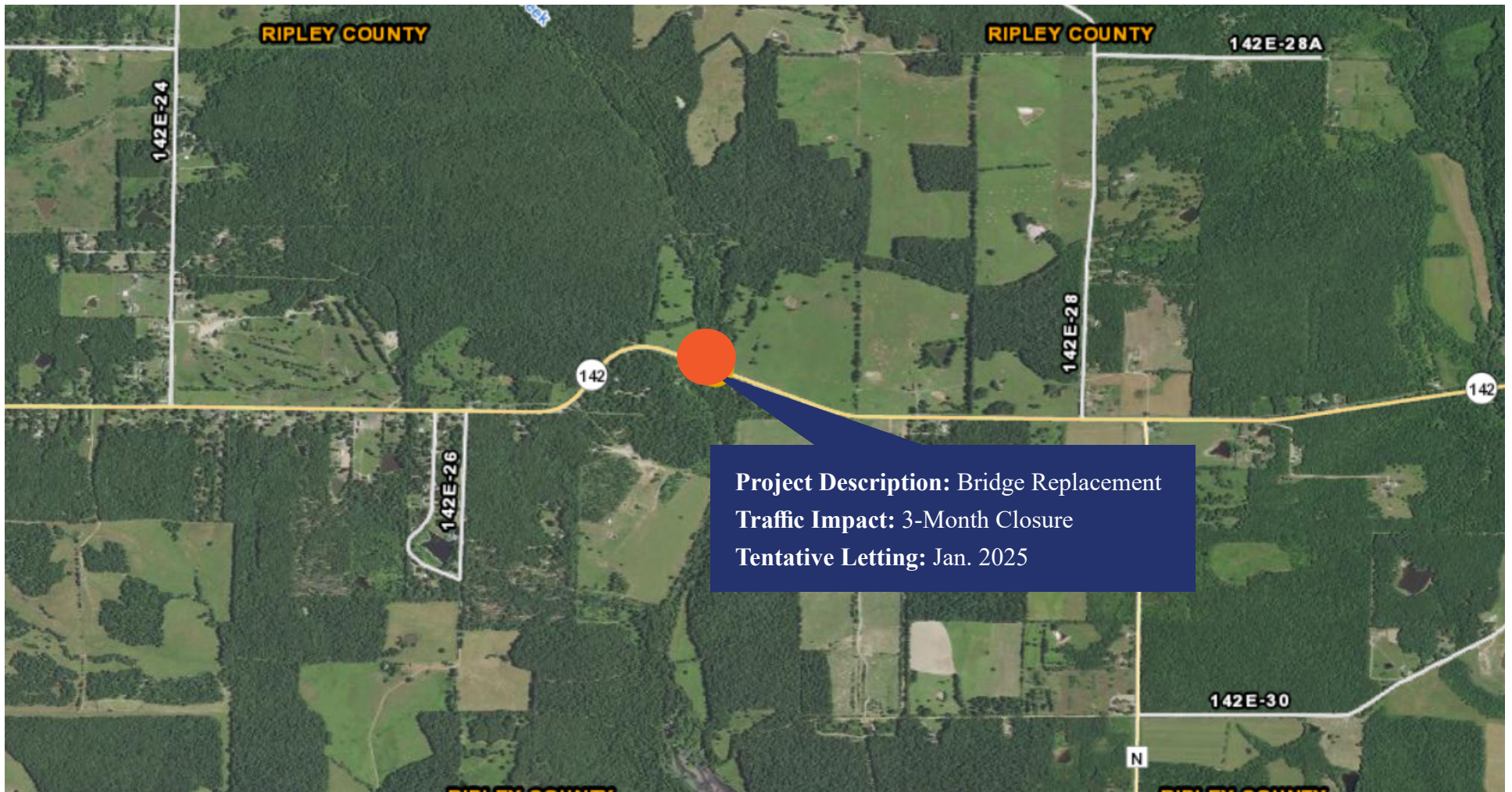


Project Description: Bridge Replacement
Traffic Impact: 3-Month Closure
Tentative Letting: Jan. 2025



Route 142 over Harris Creek

[COMMENT ON THIS PROJECT](#)



RIPLEY COUNTY

Route W over Drainage Ditch 1

COMMENT ON THIS PROJECT



Missouri Department of Transportation | Southeast District | 2675 North Main Street
Sikeston, MO 63801 | 1-888 ASK MODOT (275-6636) | www.modot.org/southeast

RIPLEY COUNTY

Route W over Drainage Ditch 3

COMMENT ON THIS PROJECT



Missouri Department of Transportation | Southeast District | 2675 North Main Street
Sikeston, MO 63801 | 1-888 ASK MODOT (275-6636) | www.modot.org/southeast