

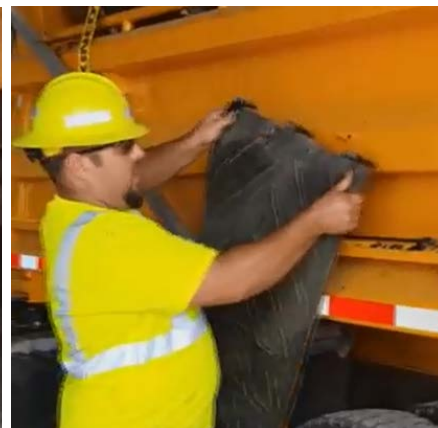
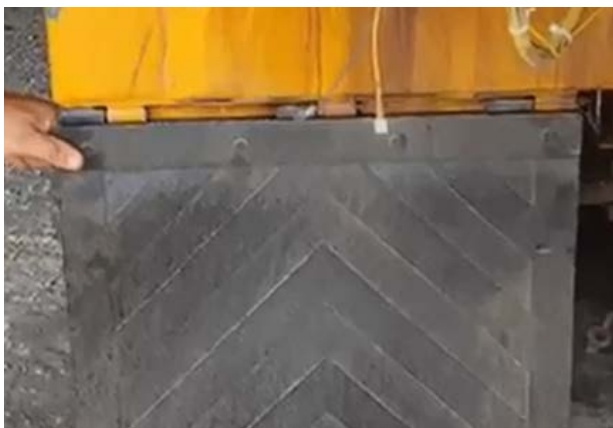
## Tool and Equipment First-Round Winner

Innovations Challenge

**April 2018**

Prepared by Transportation Planning  
Missouri Department of Transportation

## Removable Mud Flaps



### Description

The Removable Mud Flaps are used on older style International trucks for paving operations. When the flaps are removed they can be attached with brackets to the driver's side of the truck bed. The driver will notice the flaps are attached to the truck to alert them to put the mud flaps back on when paving job is finished.

### Benefit

The use of removable flaps cuts down on the cost of purchasing new mud flaps and the cost of labor to replace them.

### Materials and Labor

\$40 in materials costs with 2 hours of staff time.

### For More Information Contact:

Trent Young at [Trent.Young@modot.mo.gov](mailto:Trent.Young@modot.mo.gov) or (660) 651-2006.

Additional information, photos or videos can be seen by accessing the Innovations Challenge SharePoint page at:

<http://sharepoint/systemdelivery/TP/Documents/InnovationsChallenge.aspx>