

"THIS MEDIA SHOULD NOT BE CONSIDERED A CERTIFIED DOCUMENT."

**Standard Drawing Guidance**  
(do not show on plans):

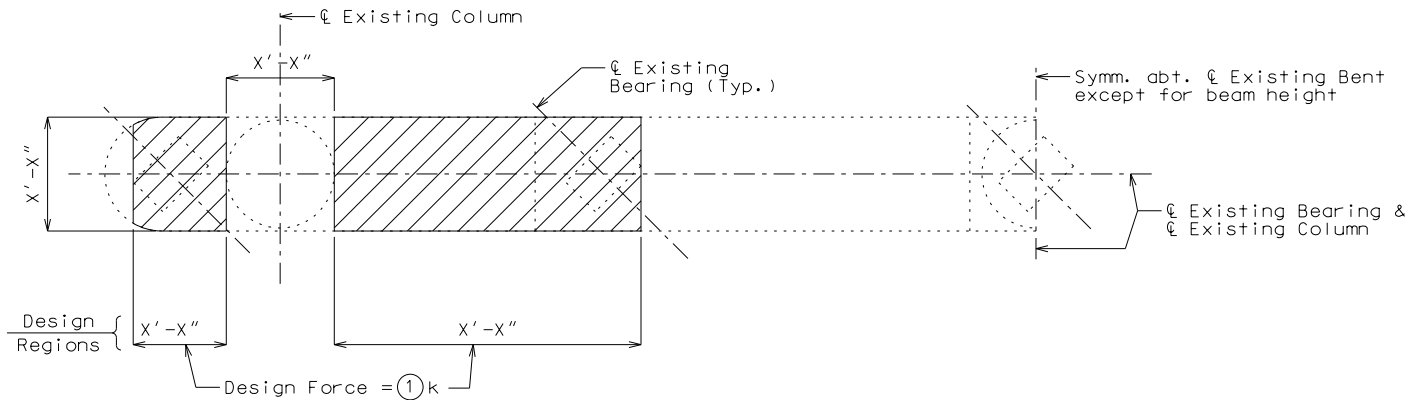
Modify standard drawing details as required.

① Compute factored Design Force

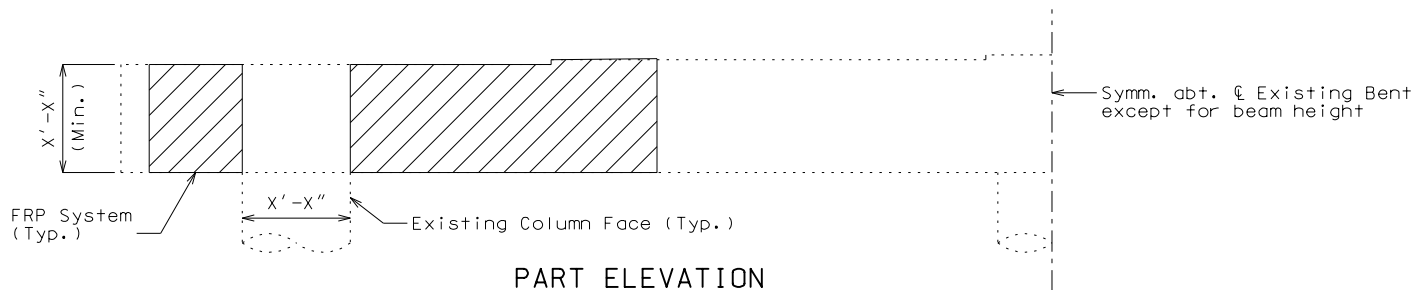
Use pay item Fiber Reinforced Polymer Wrap, \_\_sq. foot.

Add the following note to Expansion Bent Details.  
Protective Coating - Concrete Bents and Piers (Epoxy or Urethane) shall not be applied on the FRP system.

DATE PREPARED	
7/25/2019	
ROUTE	STATE
*	MO
DISTRICT	SHEET NO.
BR	*
COUNTY	
*	
JOB NO.	
*	
CONTRACT ID.	
PROJECT NO.	
BRIDGE NO.	
RHB08	



PART PLAN



PART ELEVATION

FRP WRAP AT INT. BENT NO.

Notes:  
Design Force is the factored shear force [1.1 DL + 0.75 (LL + I)] at any cross section in each design region that shall be resisted entirely by the Fiber Reinforced Polymer (FRP) wrap.  
See Special Provisions.

DESCRIPTION	DATE
MISSOURI HIGHWAYS AND TRANSPORTATION COMMISSION	105 WEST CAPITOL JEFFERSON CITY, MO 65102
	1-888-ASK-MODOT (1-888-275-6636)

BENT CAP SHEAR STRENGTHENING USING FRP WRAP

Detailed Checked

IF A SEAL IS PRESENT ON THIS SHEET IT HAS BEEN ELECTRONICALLY SEALED AND DATED.