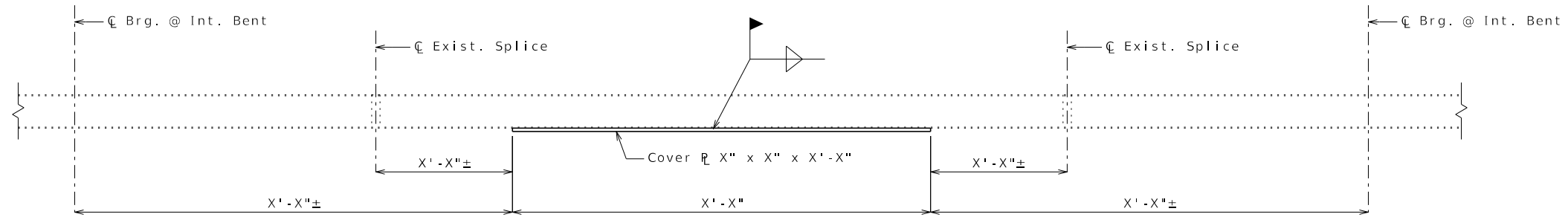


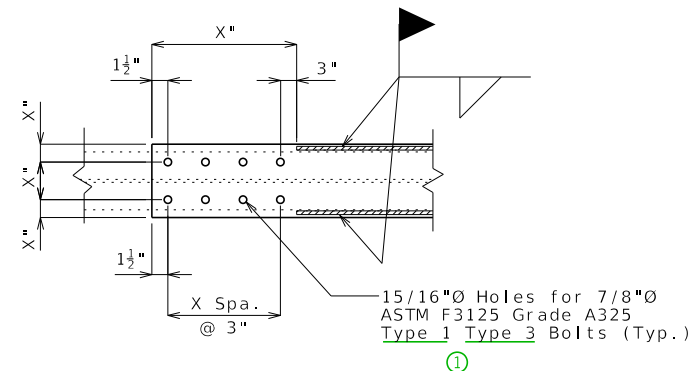
PART ELEVATION OF EXTERIOR BEAM SHOWING COVER PLATE INSTALLATION
SPAN (X-X) AND SPAN (X-X)



PART ELEVATION OF EXTERIOR BEAM SHOWING COVER PLATE INSTALLATION
SPAN (X-X)

Standard Drawing Guidance (do not show on plans):

- ① Use Type 3 for weathering steel bolted connections and Type 1 for plain or galvanized steel bolted connections.



TYPICAL DETAIL OF THE ENDS OF COVER PLATES
(BOTTOM VIEW)

Notes:

Beam with end-bolted cover plates shall be installed in the following sequence after existing bridge deck is removed:

1. Drill holes in cover plate and flange.
2. Clean faying surfaces. (See Special Provisions)
3. Install and tighten bolts.
4. Weld cover plate to flange.

Fabricated Structural Steel shall be ASTM A709 Grade 36, except as noted.

Payment for _____ pounds of new cover plates complete in place will be considered completely covered by the contract lump sum price for Strengthening Existing Beams.

Notch toughness is required for all cover plates.

Contractor shall verify all dimensions in field before finalizing the shop drawings.

STRENGTHENING EXISTING BEAMS

Detailed
Checked

Note: This drawing is not to scale. Follow dimensions.

Sheet No. of _

DATE PREPARED 3/7/2024	
ROUTE	STATE MO
DISTRICT	SHEET NO. 3
COUNTY	
JOB NO.	
CONTRACT ID.	
PROJECT NO.	
BRIDGE NO.	

DATE	DESCRIPTION

MISSOURI HIGHWAYS AND TRANSPORTATION
COMMISSION

105 WEST CAPITOL
JEFFERSON CITY, MO 65102
1-888-ASK-MODOT (1-888-275-6636)