

REDECK01_front_sheet Guidance & Alternate Details (1 of 7)

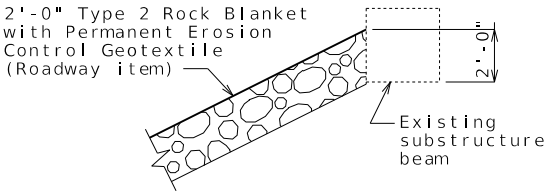
Standard Drawing Guidance (do not show on plans):
(Turn off Level Bridge-Constructions to hide)

- ① Remove if not required; may be incorporated into half section slab details.
- ② Use this note only when specified in Bridge Memo or Design Layout.
- ③ For skewed bridges, add these items to section details to call out varied transverse bars at end bent.

④ Bar spacing shown is for Type D barrier. Below spacing may be used for Type H barrier.

Roadway	22 feet	22 feet	24 feet	24 feet	26 feet	26 feet
Beam Spa.	4 @ 6'-8"	4 @ 6'-0"	4 @ 6'-10"	4 @ 6'-8"	4 @ 7'-8"	4 @ 7'-4"
Bar Spa.	7"	7½"	8"	7½"	8"	8"
Roadway	28 feet	30 feet	32 feet	34 feet	38 feet	
Beam Spa.	4 @ 8'-0"	4 @ 8'-8"	4 @ 9'-4"	5 @ 7'-6"	5 @ 8'-6"	
Bar Spa.	8"	8"	8"	8"	6"	

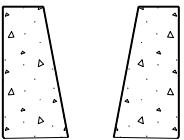
⑤ Note is required only when shop drawings will be required (For example, expansion device replacement, diaphragm replacement, etc.)



ROCK BLANKET ON SPILL SLOPES

Use when Rock Blanket is specified on BR Memo.

Type H Barrier



Structural Steel Protective Coating:

A4a1.21

Protective Coating: System G in accordance with Sec 1081 except thinners are not permitted.

Surface Preparation: Surface preparation of the existing steel shall be in accordance with Sec 1081 for Overcoating of Structural Steel. The cost of surface preparation will be considered completely covered by the contract lump sum unit price per sq. foot for Surface Preparation for Overcoating Structural Steel (System G).

A4a1.22

Field Coat(s): The color of the field overcoat shall be Gray (Federal Standard #26373) Brown (Federal Standard #30045) Black (Federal Standard #17038) Dark Blue (Federal Standard #25052) Bright Blue (Federal Standard #25095) and shall be applied in accordance with Sec 1081.10.3.4, except that all structural steel shall have the intermediate field coat applied in accordance with Sec 1081.10.3.4.1.1. The cost of the intermediate field coat will be considered completely covered by the contract lump sum unit price per sq. foot for Intermediate Field Coat (Sytem G). The cost of the finish field coat will be considered completely covered by the contract lump sum unit price per sq. foot for Finish Field Coat (System G).

A4a1.23

(Existing Bearings at End Bents and Int. Bents)

Structural Steel Protective Coating:

Protective Coating: System G in accordance with Sec 1081. All existing bearings shall be recoated with System G.

A4a1.9
(Modified)

Surface Preparation: Surface preparation of the existing steel shall be in accordance with Sec 1081 for Recoating of Structural Steel (System G, H or I) with organic inorganic zinc primer. The cost of surface preparation will be considered completely covered by the contract unit price for Recoating Existing Bearings.

A4a1.10
(Modified)

Prime Coat: The cost of the prime coat will be considered completely covered by the contract unit price for Recoating Existing Bearings. Tint of the prime coat for System G shall be similar to the color of the field coat to be used.

A4a1.11
(Modified)

Field Coat: The color of the finish field coat shall be Gray (Federal Standard #26373). The cost of the intermediate field coat will be considered completely covered by the contract unit price for Recoating Existing Bearings. The cost of the finish field coat will be considered completely covered by the contract unit price for Recoating Existing Bearings.

A4a1.12
(Modified)

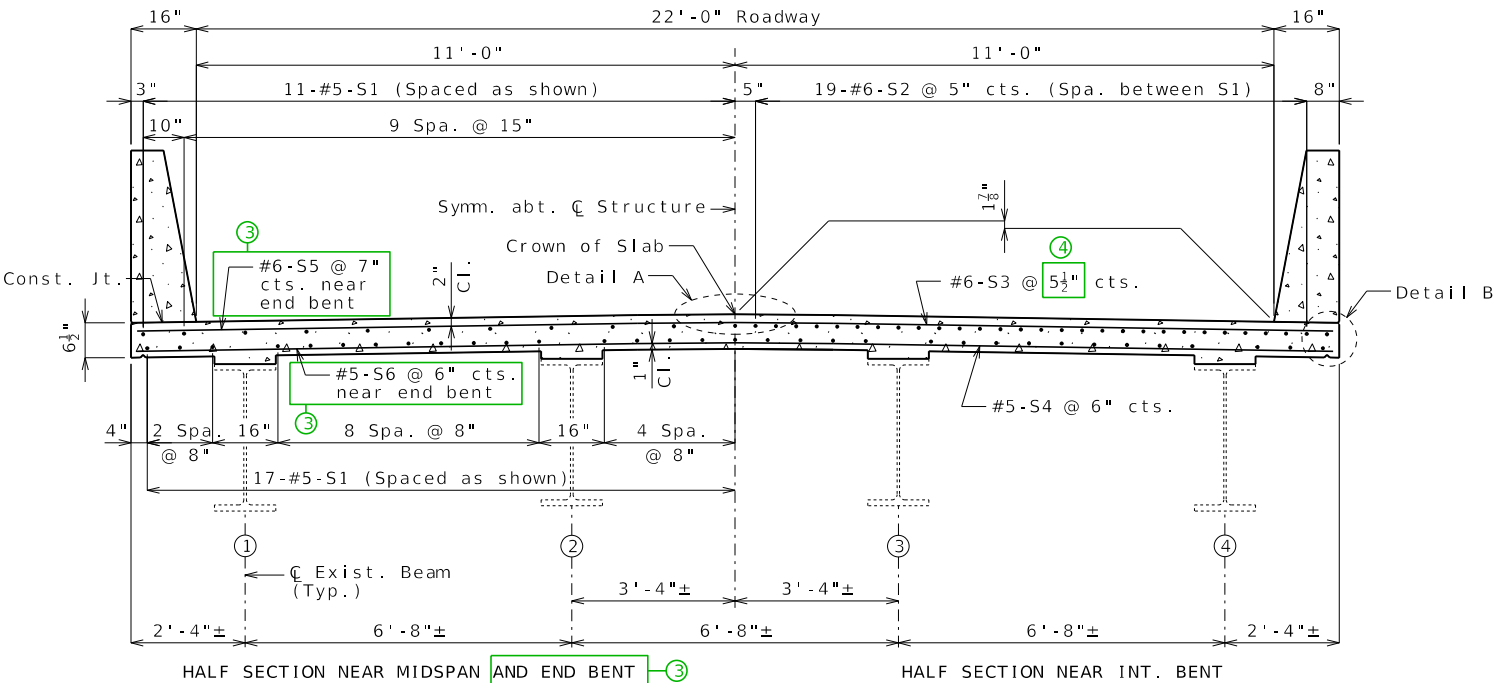
Sec 1081.10.4.6 shall be modified such that the word "RECOATED" is replaced by the word "RECOATED - SYSTEM G - BEARINGS ONLY".

(Structures with Exposed Piling)

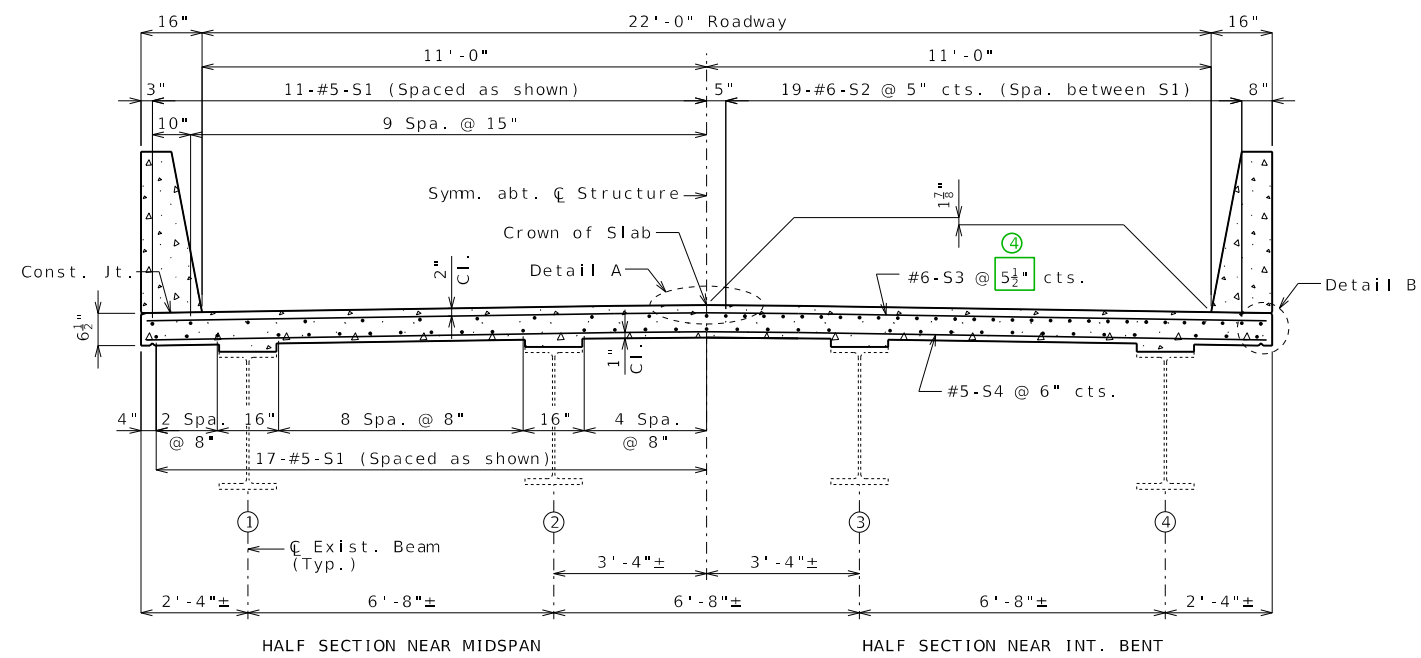
Structural Steel Protective Coating:

A4a3.2

All exposed surfaces of the existing structural steel piles shall be coated with one 6-mil thickness of aluminum gray epoxy-mastic primer applied over an SSPC-SP3 surface preparation in accordance with Sec 1081. The bituminous coating shall be applied one foot above and one foot below the existing ground line and in accordance with Sec 702. These protective coatings will not be required below the normal low water line. The cost of surface preparation will be considered completely covered by the contract lump sum price for Surface Preparation for Applying Epoxy-Mastic Primer. The cost of the aluminum gray epoxy-mastic primer and bituminous coating will be considered completely covered by the contract lump sum price for Aluminum Gray Epoxy-Mastic Primer.

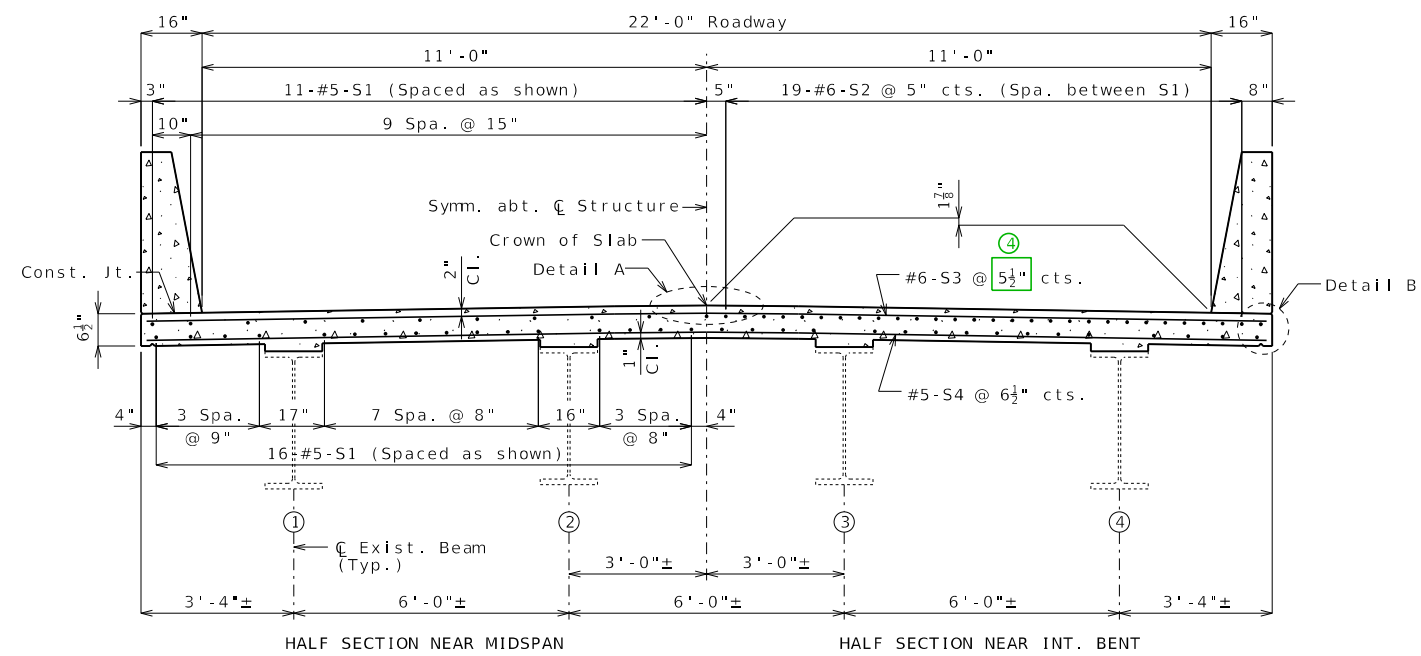


TYPICAL SECTION THRU SLAB
22' RDWY-4 BEAMS @ 6'-8"
*** SKEWED BRIDGES ***



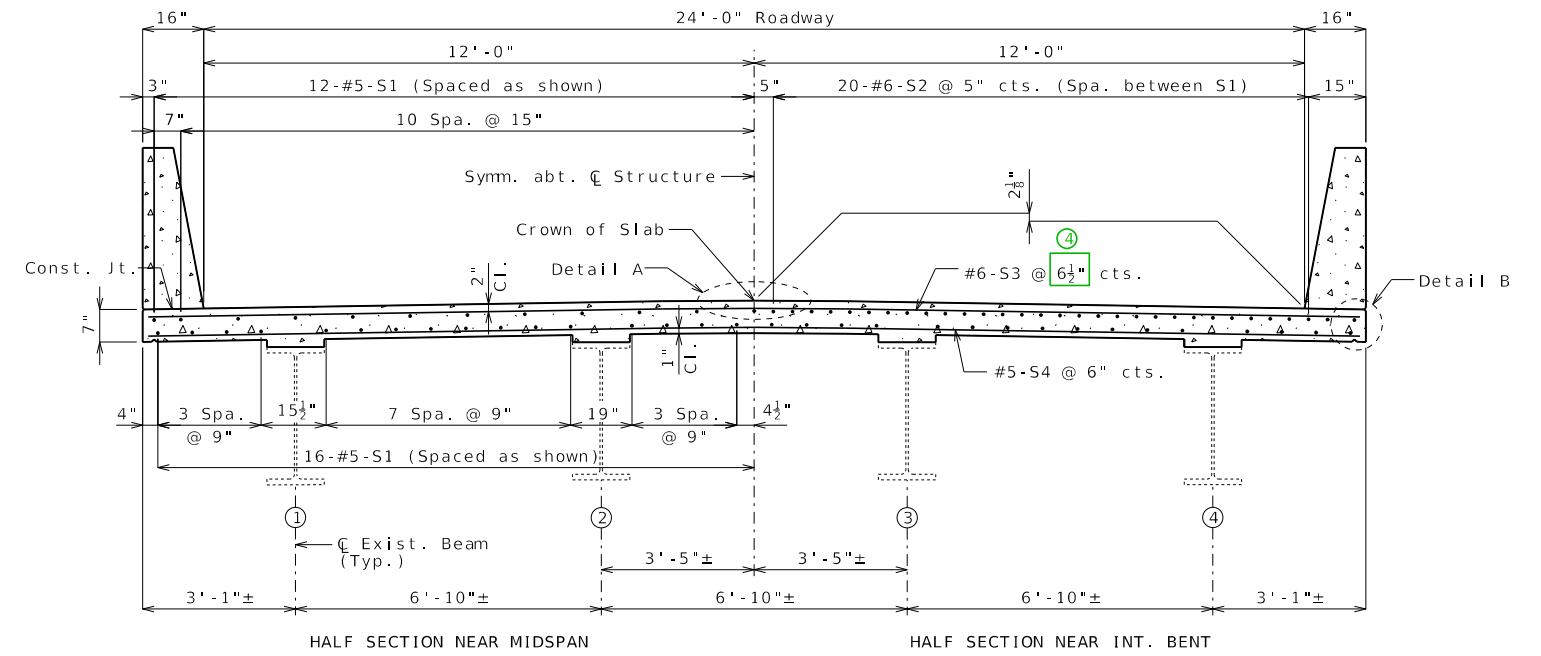
TYPICAL SECTION THRU SLAB

22' RDWY-4 BEAMS @ 6'-8"



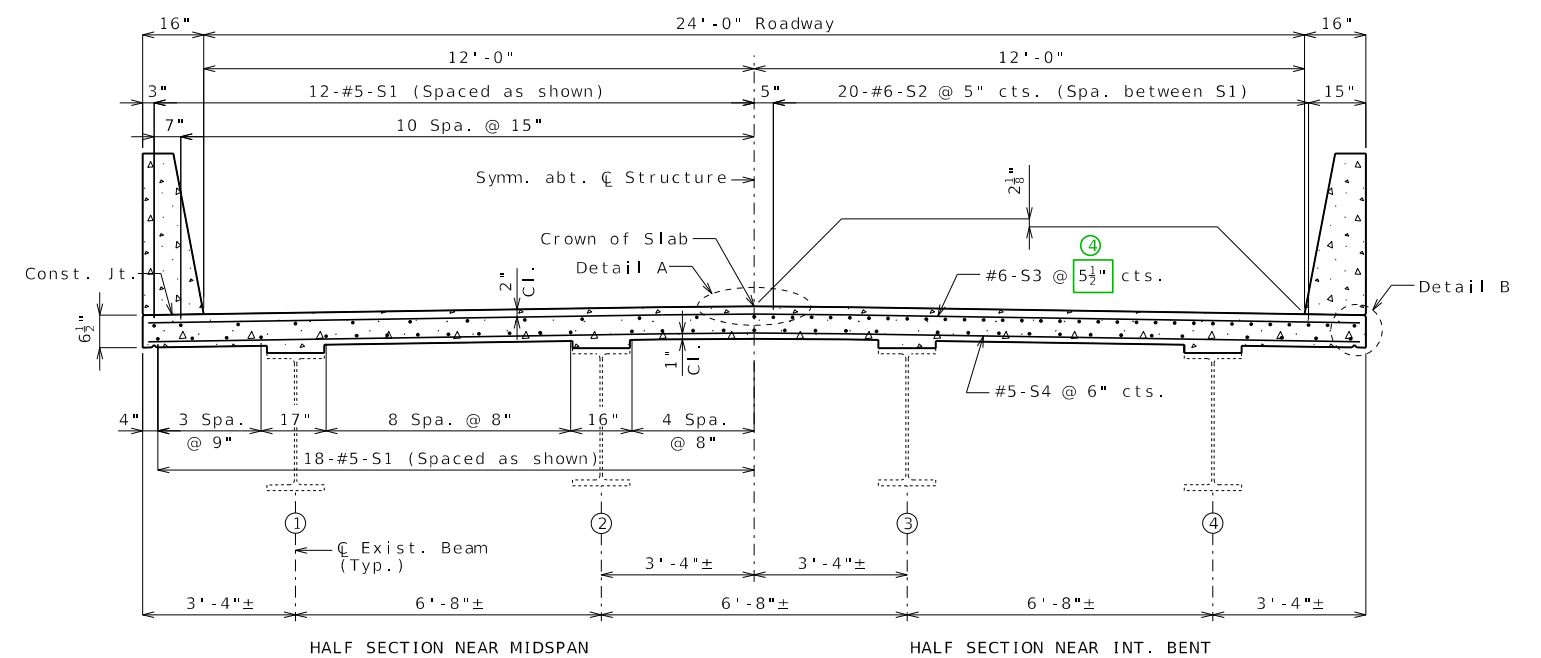
TYPICAL SECTION THRU SLAB

22' RDWY - 4 BEAMS @ 6' - 0"



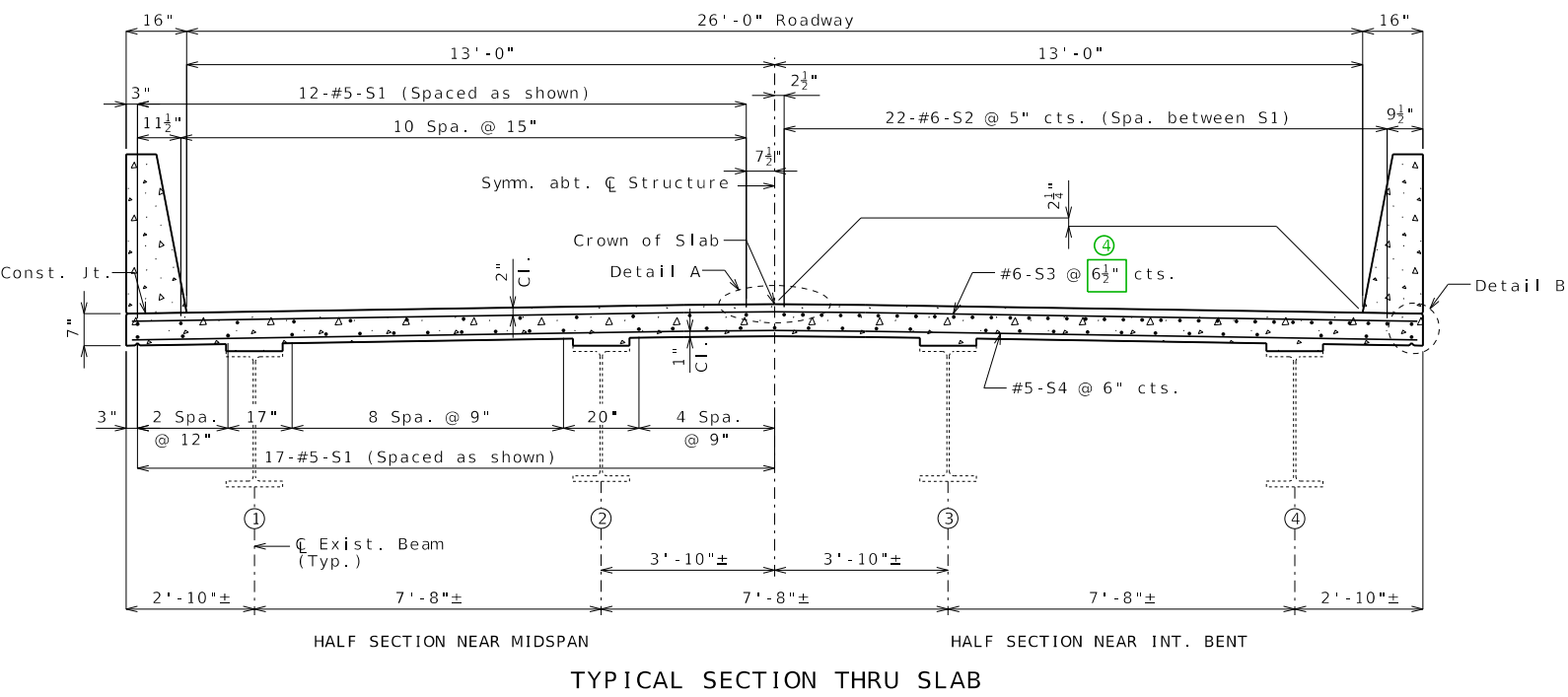
TYPICAL SECTION THRU SLAB

24' RDWY-4 BEAMS @ 6'-10"

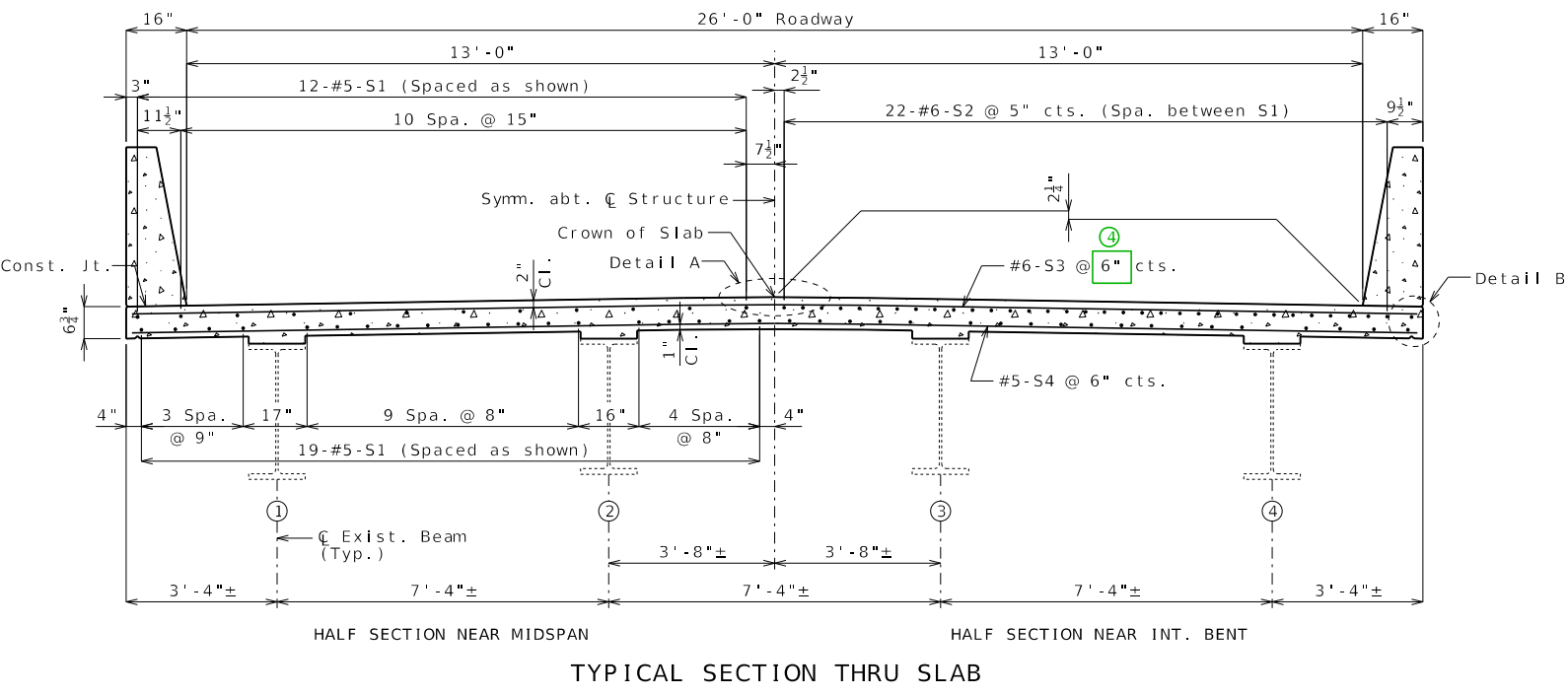


TYPICAL SECTION THRU SLAB

24' RDWY - 4 BEAMS @ 6' - 8"

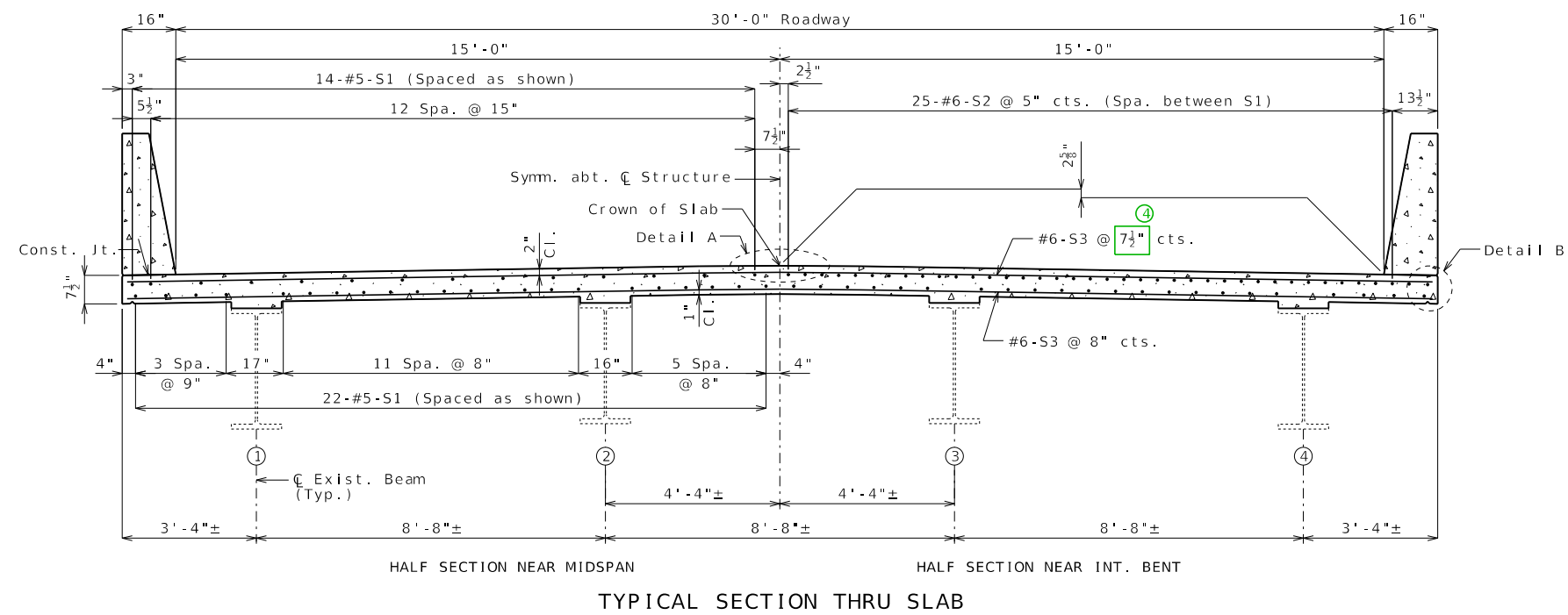


26' RDWY-4 BEAMS @ 7'-8"

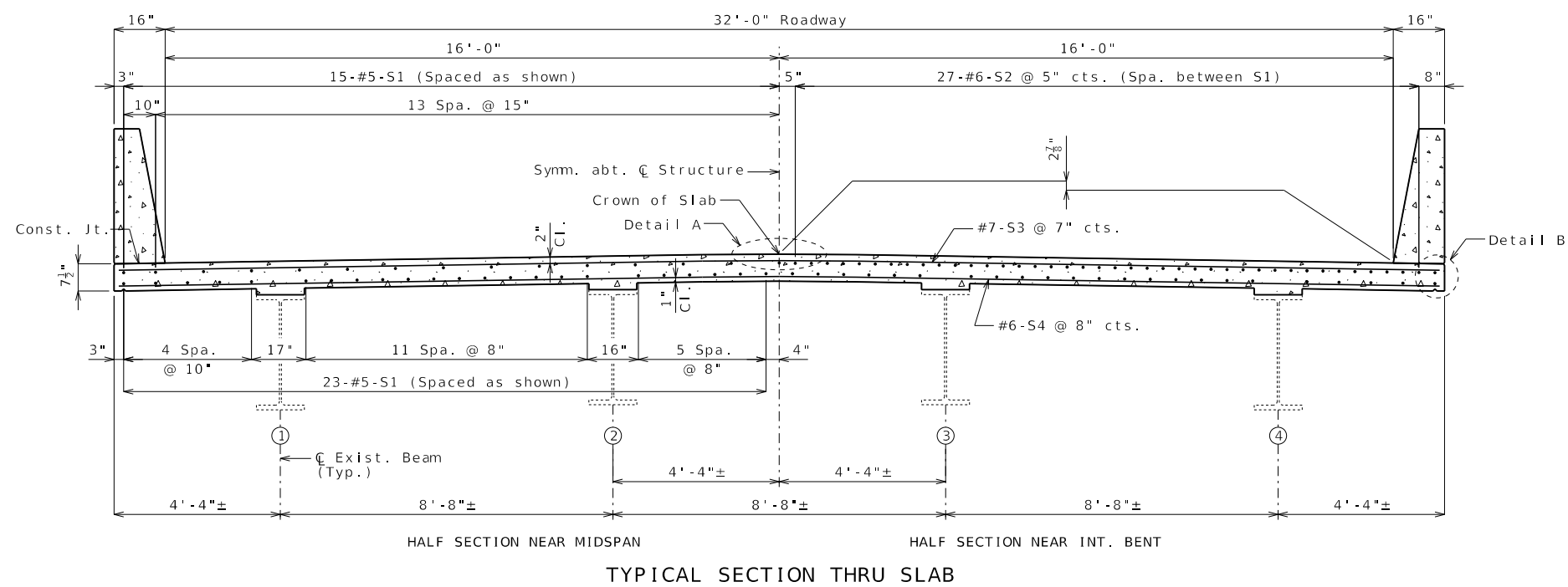


26' RDWY-4 BEAMS @ 7'-4"

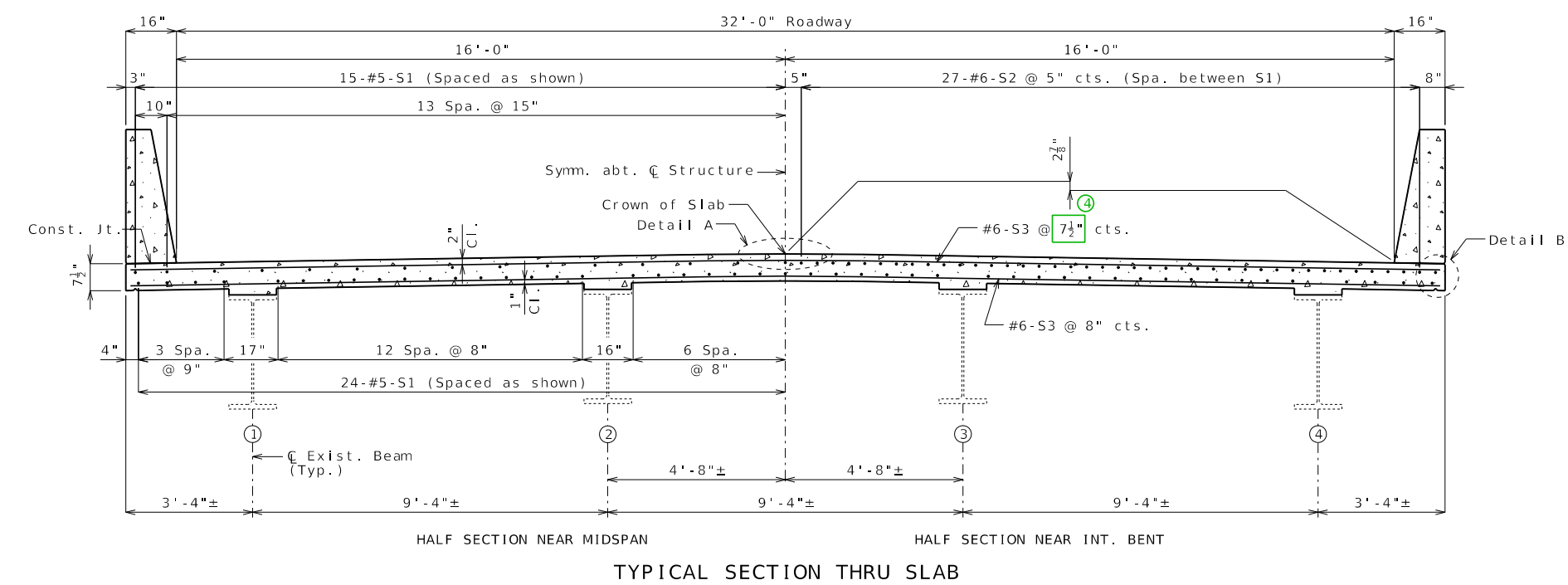




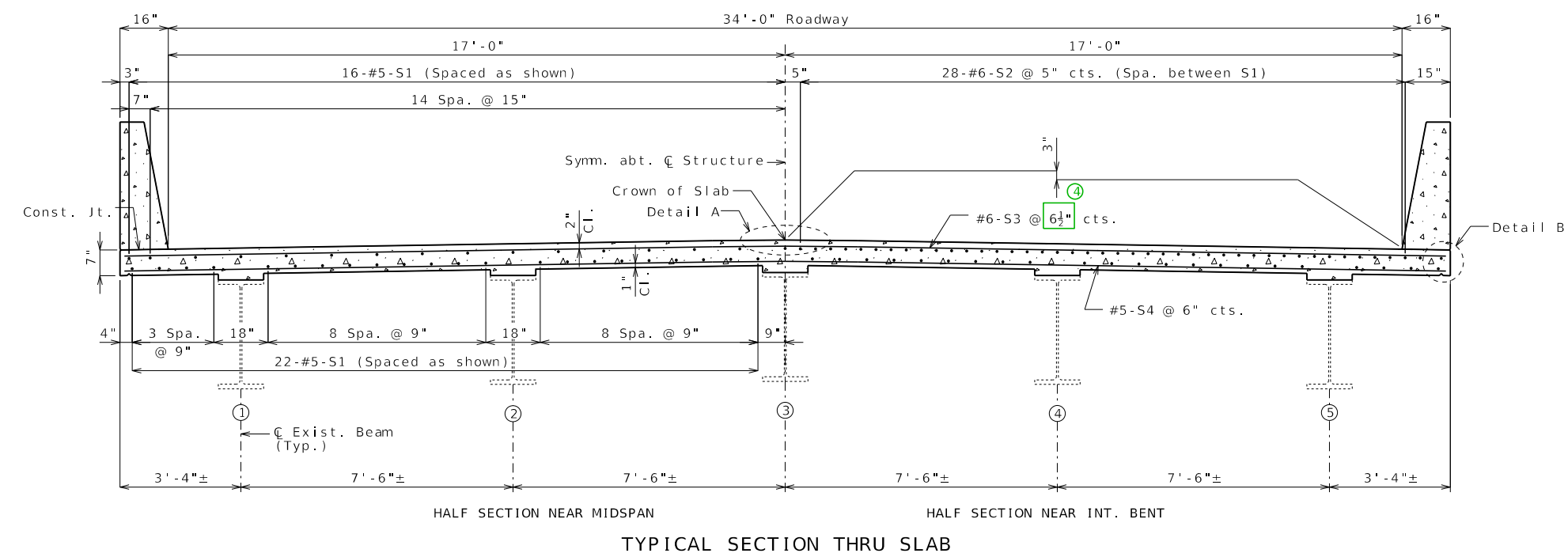
30 ' RDWY-4 BEAMS @ 8 '-8 "



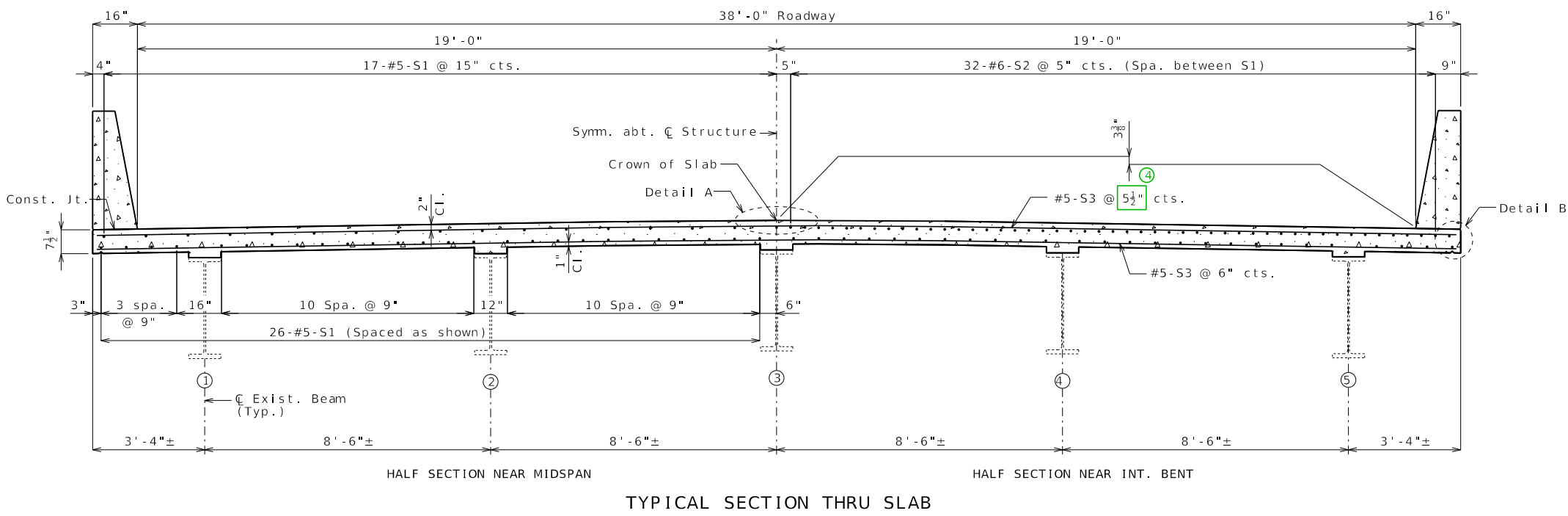
32 ' RDWY-4 BEAMS @ 8 '-8 "



32' RDWY-4 BEAMS @ 9'-4"



34' RDWY-5 BEAMS @ 7'-6"



38' RDWY-5 BEAMS @ 8'-6"