

Wayne County

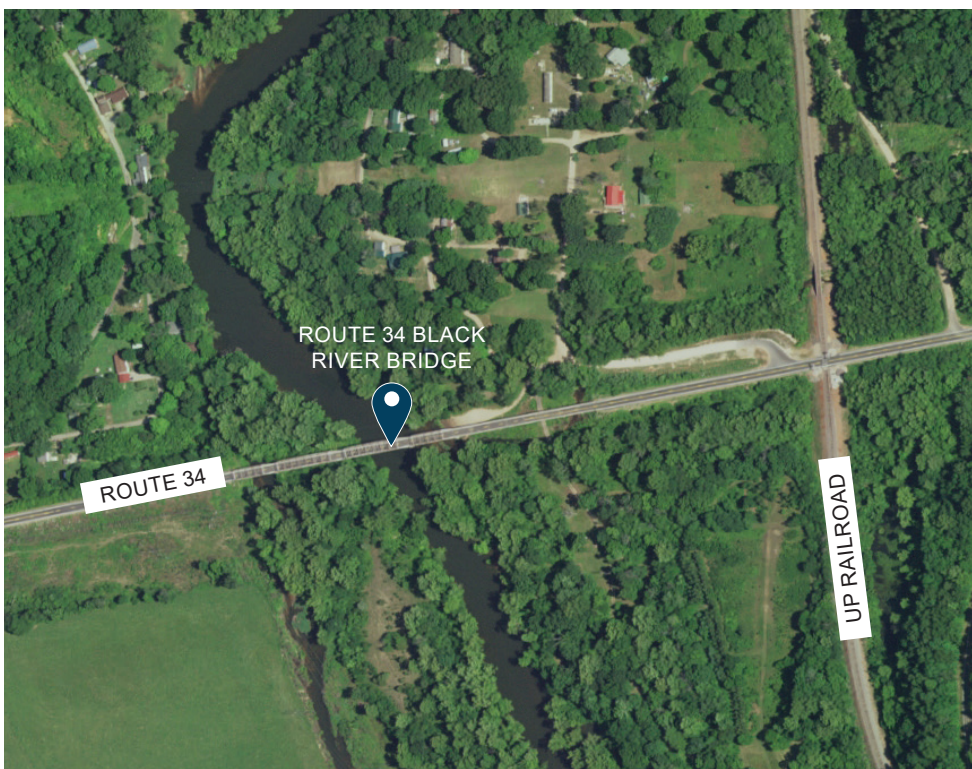


Route A Small Creek Bridge Near Greenville, Mo.

Timeline: Construction of the Route A bridge could begin as early as spring 2021, with completion anticipated by fall 2021.

Traffic Impacts: As work is underway, the roadway will be closed in the vicinity of the bridge for approximately two months.

Contact Us: For more information, please contact Project Manager Pete Berry at (417) 469-6242 or Area Engineer David Wyman at (573) 472-9021.



Route 34 Black River Bridge Near Leeper, Mo.

Timeline: Construction of the Route 34 bridge could begin as early as spring 2022, with completion anticipated by winter 2022.

Traffic Impacts: As work is underway, the roadway will be closed in the vicinity of the bridge for approximately six months.

Contact Us: For more information, please contact Project Manager Pete Berry at (417) 469-6242 or Area Engineer David Wyman at (573) 472-9021.