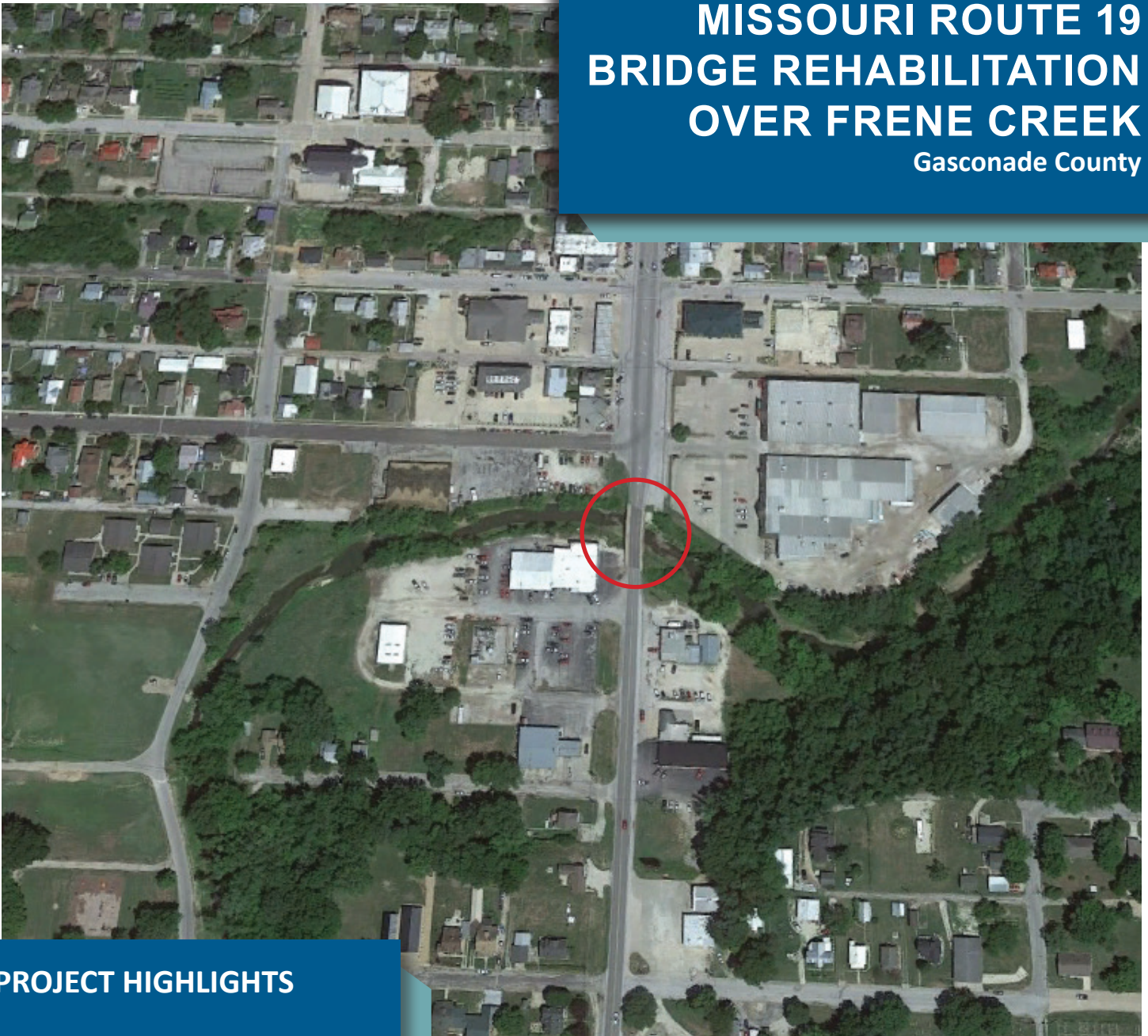


# MISSOURI ROUTE 19 BRIDGE REHABILITATION OVER FRENE CREEK

Gasconade County



## PROJECT HIGHLIGHTS

**Location:** Missouri Route 19 over Frene Creek in Hermann.

**Traffic impact:** Bridge will be closed throughout construction.

**Budget:** \$1.2 million.

**Construction expected:** 2024.

**Average daily traffic:** Around 10,000 vehicles daily.

*Subject to change. Information current as of Septmeber 2023.*



Scan to visit the project's webpage.



## PROJECT DETAILS

### Districts Impacted

Central

### Counties Impacted

Gasconade

### Project Status

Planning Stage

### Why is the work necessary?

The 92-year-old structure was built with narrow driving lanes and the pedestrian facilities are in very poor condition. To update the bridge to modern standards and improve the traveling surface, the deck and girders – the superstructure – will be replaced. The pedestrian facilities will also be upgraded during the project to meet Americans with Disabilities Act (ADA) requirements.

### What other options were considered?

The design team considered building a new single-span bridge and reconfiguring the existing bridge deck. However, from a cost-benefit analysis neither option were on par with replacing the superstructure.

While replacing the bridge would have the highest life expectancy, it also had the highest cost and largest impacts to the environment, utilities, and surrounding area. Reconfiguring the existing deck came in at a similar price point as replacing the superstructure but with a lower life expectancy.

### How will traffic be affected?

The contractor will close the bridge to all traffic through the completion of the project, which they have 75 calendar days to accomplish. A signed detour will be posted. The road will be open in May and October.

### When will the work take place?

The work will go out for bid in October 2023 and the construction will be completed by the end of the Dec. 1, 2024.

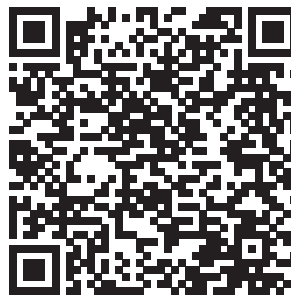
As with all projects that are in the planning stage, these dates are subject to change.

### What will the project cost?

The estimated total construction cost is approximately \$1.2 million.

### How can I learn more?

You may learn more by contacting us toll-free at 1-888-ASK-MoDOT (275-6636) or visit the project page by scanning the QR code below.



Project Manager Patrick Hake  
CDCR@modot.mo.gov  
888 ASK MODOT (1-888-275-6636)