

IMPROVE I-70 KANSAS CITY

Project Overview

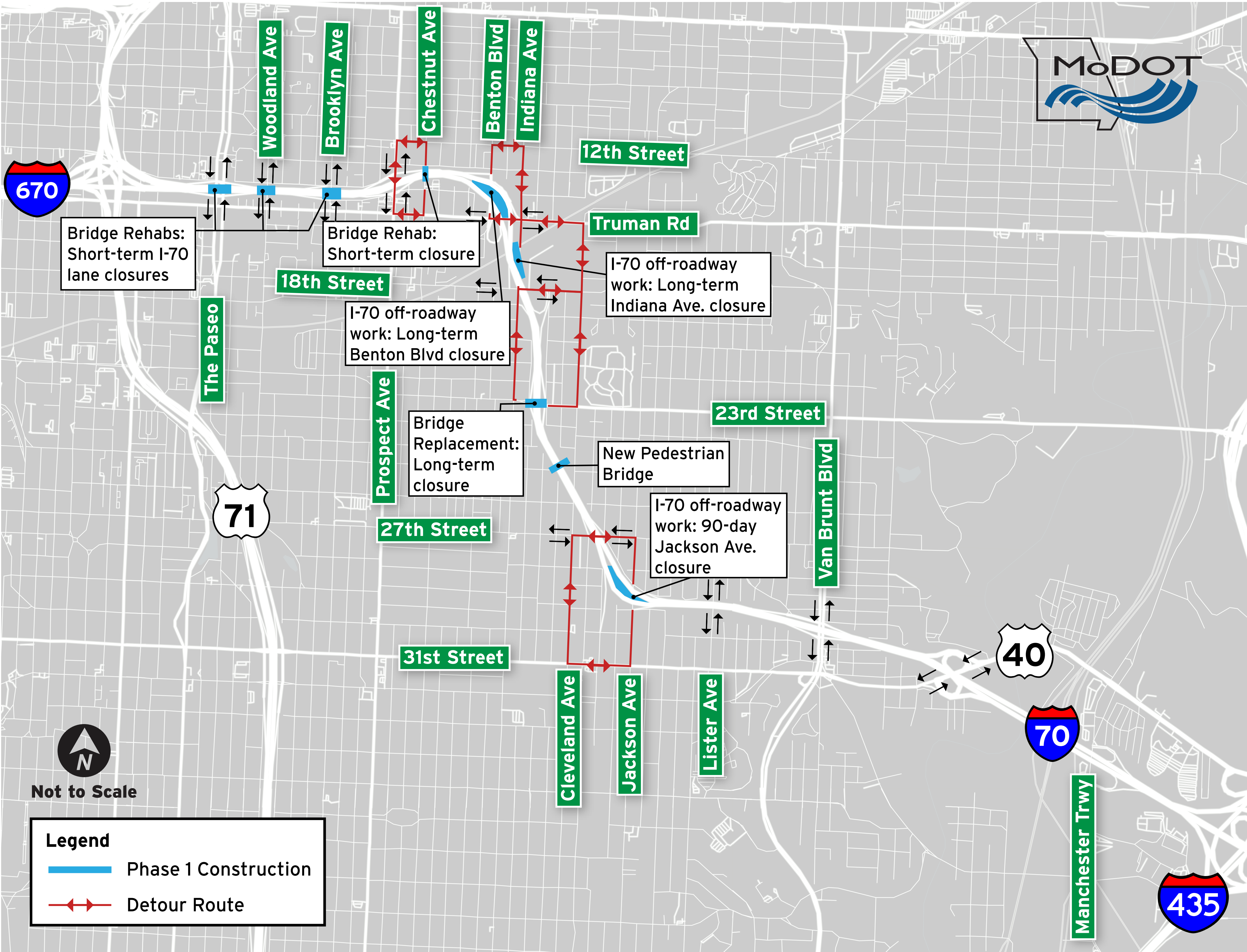


Legend

- I-70 Improvements
- New Bridge
- Bridge Rehabilitation

IMPROVE I-70 KANSAS CITY

Construction Phase I (2025)



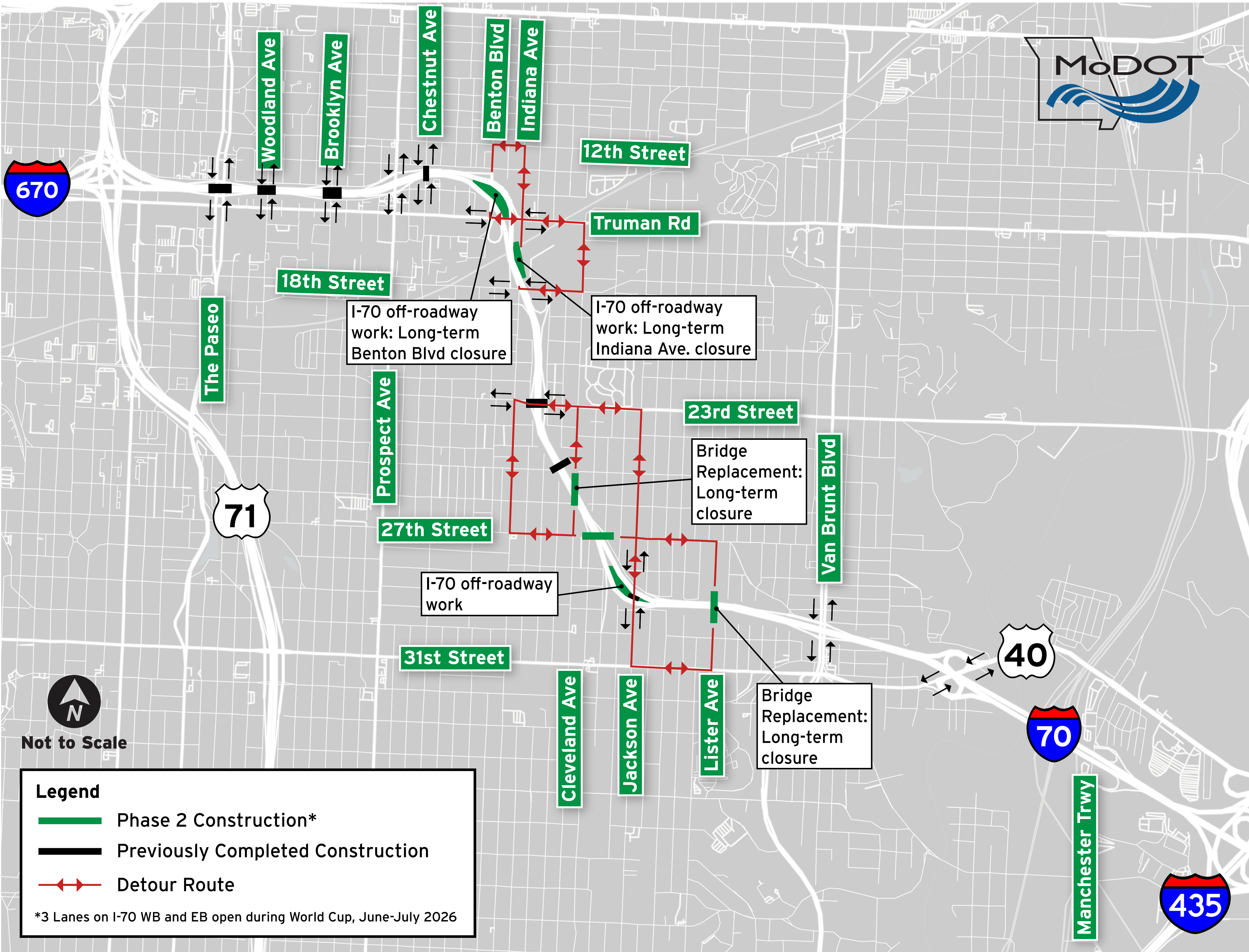
Not to Scale

Legend

- Phase 1 Construction
- Detour Route

IMPROVE I-70 KANSAS CITY

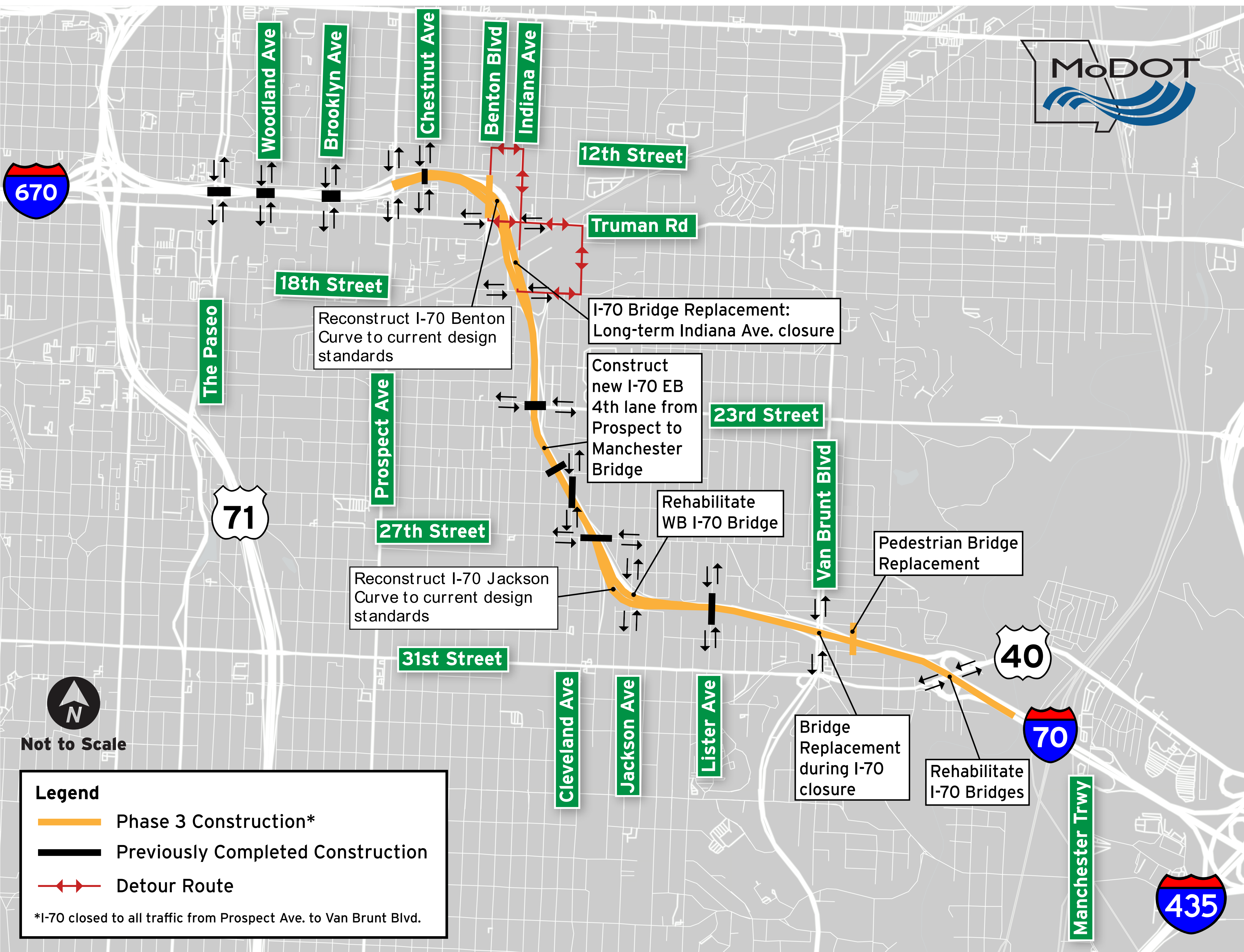
Construction Phase II (2026)



Not to Scale

IMPROVE I-70 KANSAS CITY

Construction Phase III (2027)



Not to Scale

Legend

- Phase 3 Construction*
- Previously Completed Construction
- Detour Route

*I-70 closed to all traffic from Prospect Ave. to Van Brunt Blvd.

IMPROVE I-70 KANSAS CITY

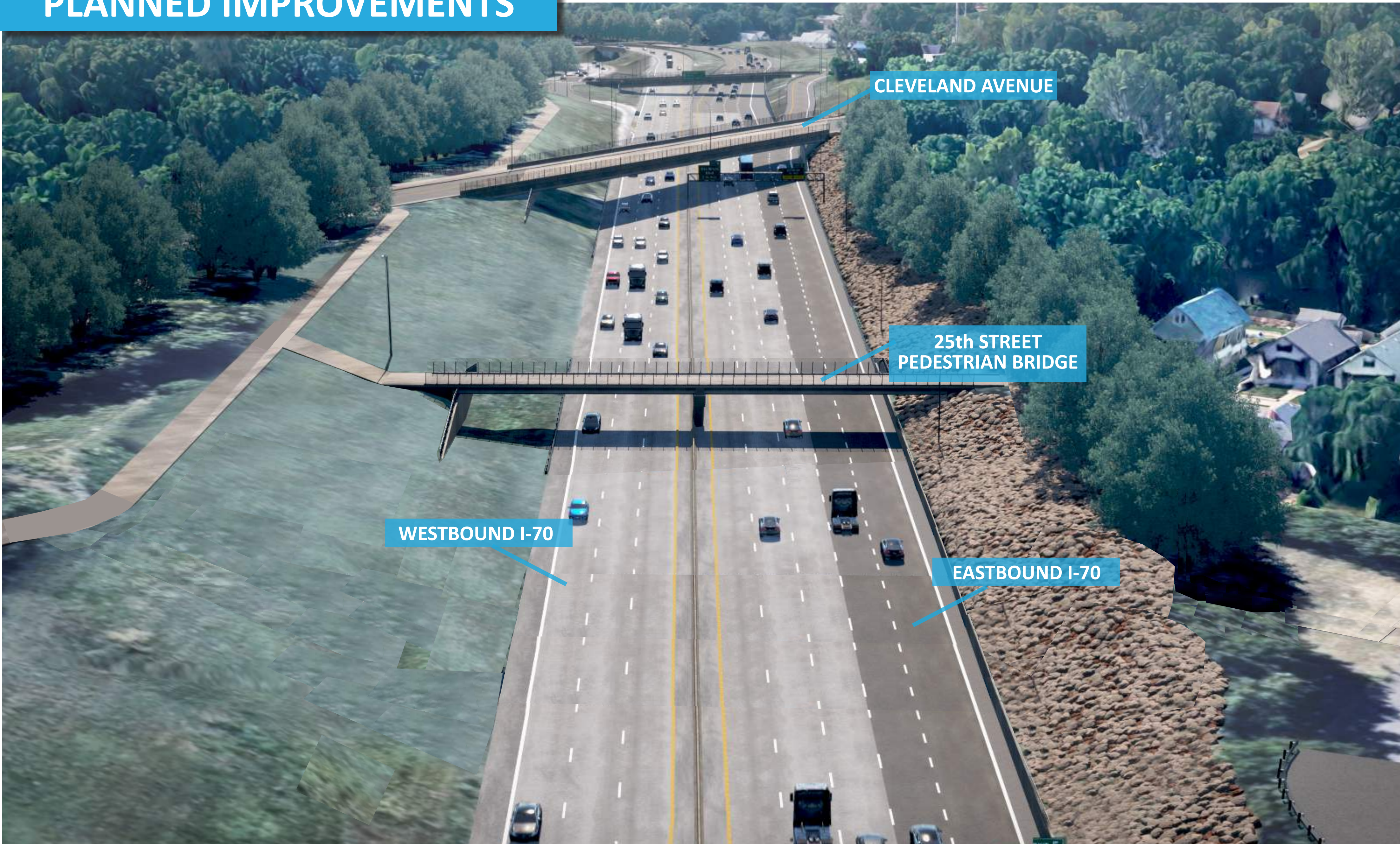
25th Street Pedestrian Bridge



CURRENT LAYOUT



PLANNED IMPROVEMENTS



IMPROVE I-70 KANSAS CITY

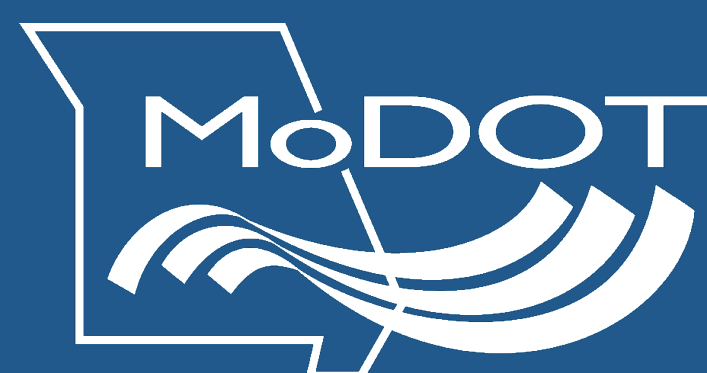
Jackson Avenue Curve



CURRENT LAYOUT



PLANNED IMPROVEMENTS



IMPROVE I-70 KANSAS CITY

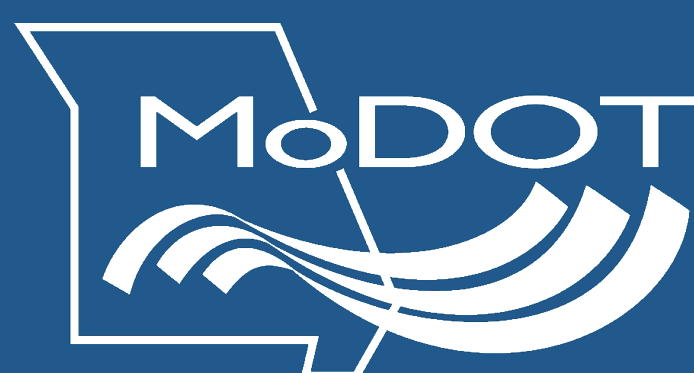
Benton Boulevard Curve



CURRENT LAYOUT



PLANNED IMPROVEMENTS



IMPROVE I-70 KANSAS CITY

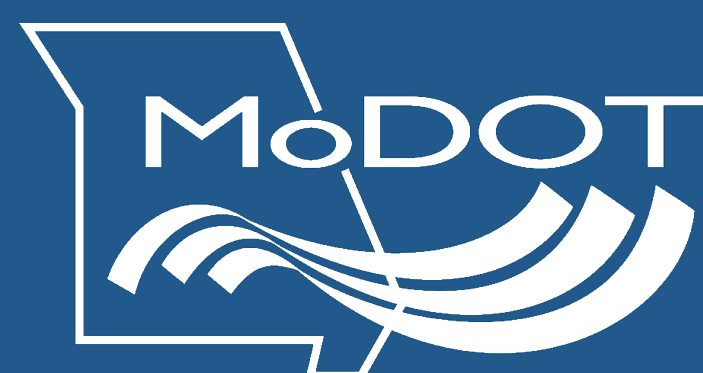
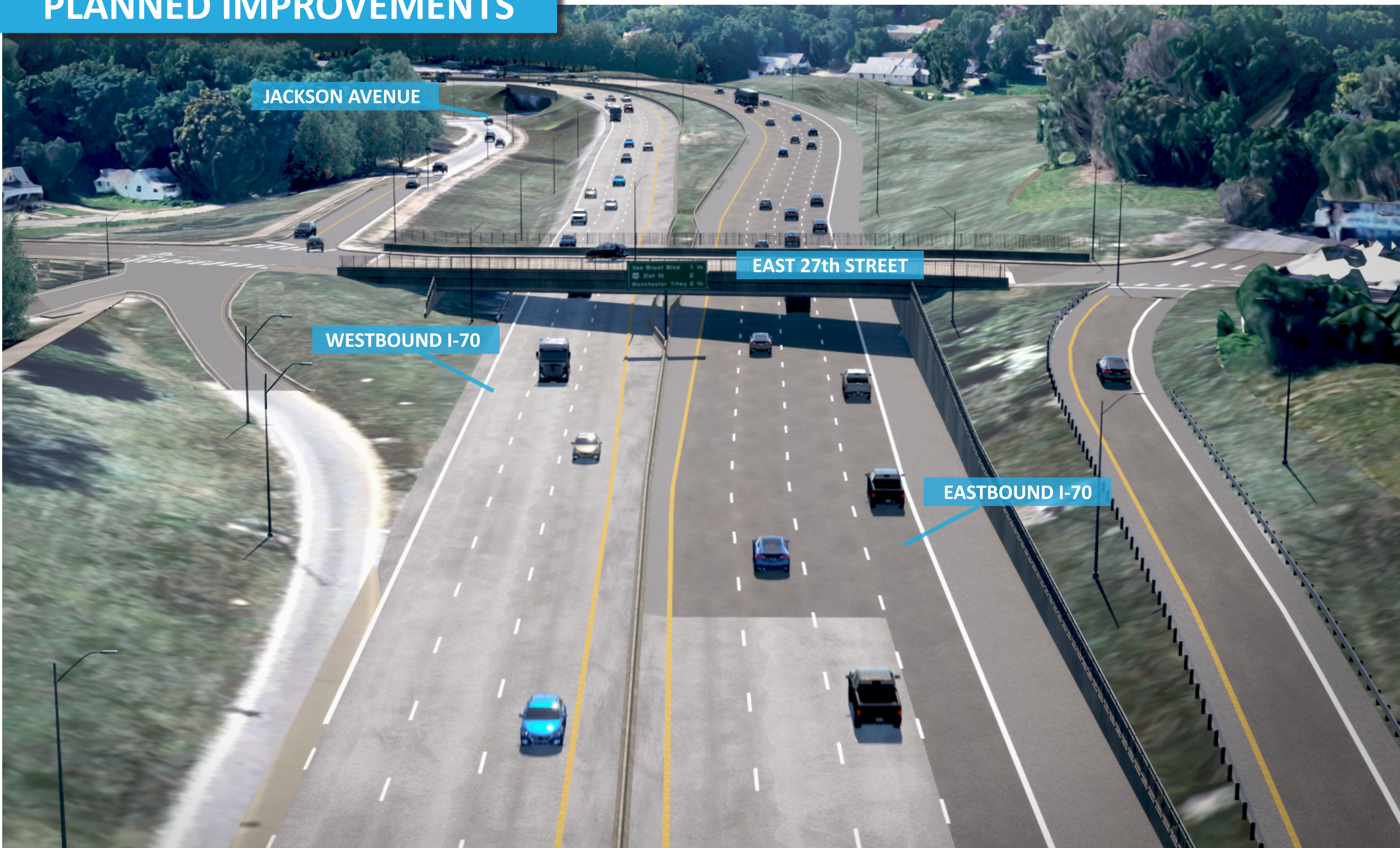
East 27th Street



CURRENT LAYOUT

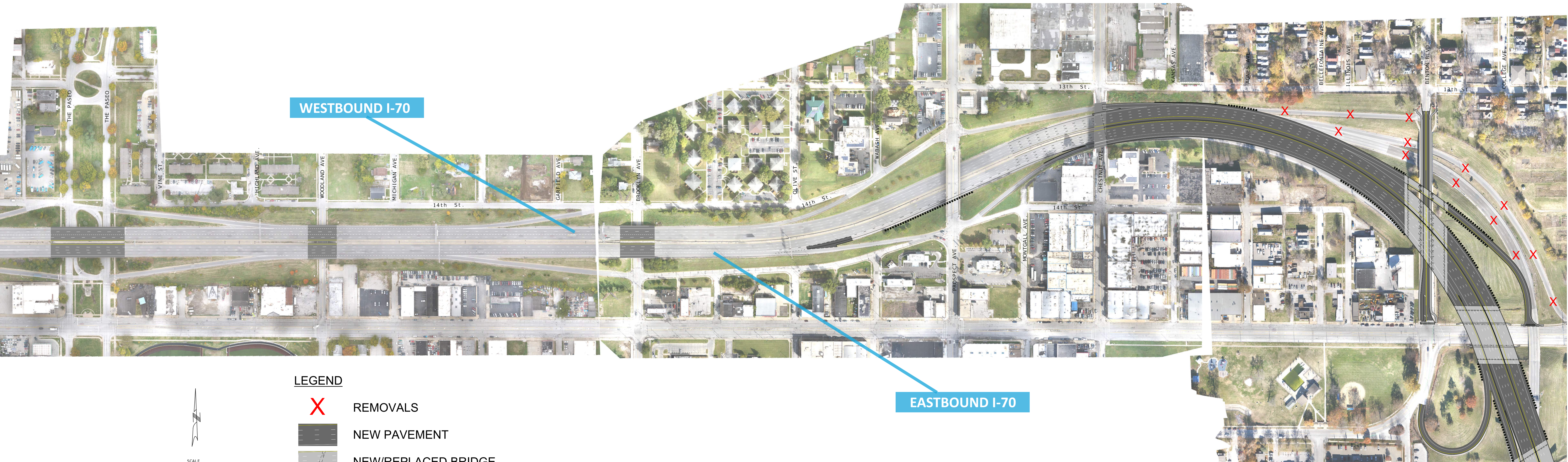


PLANNED IMPROVEMENTS



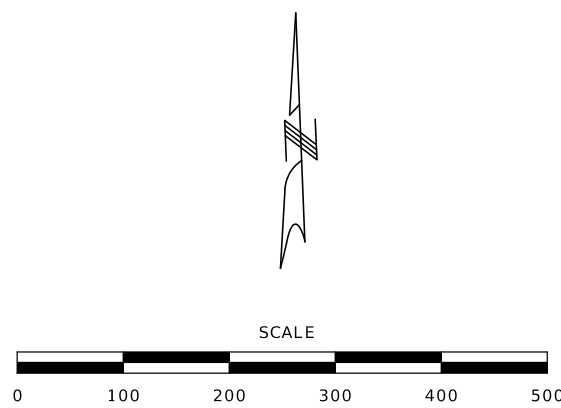
IMPROVE I-70 KANSAS CITY

Project Overview



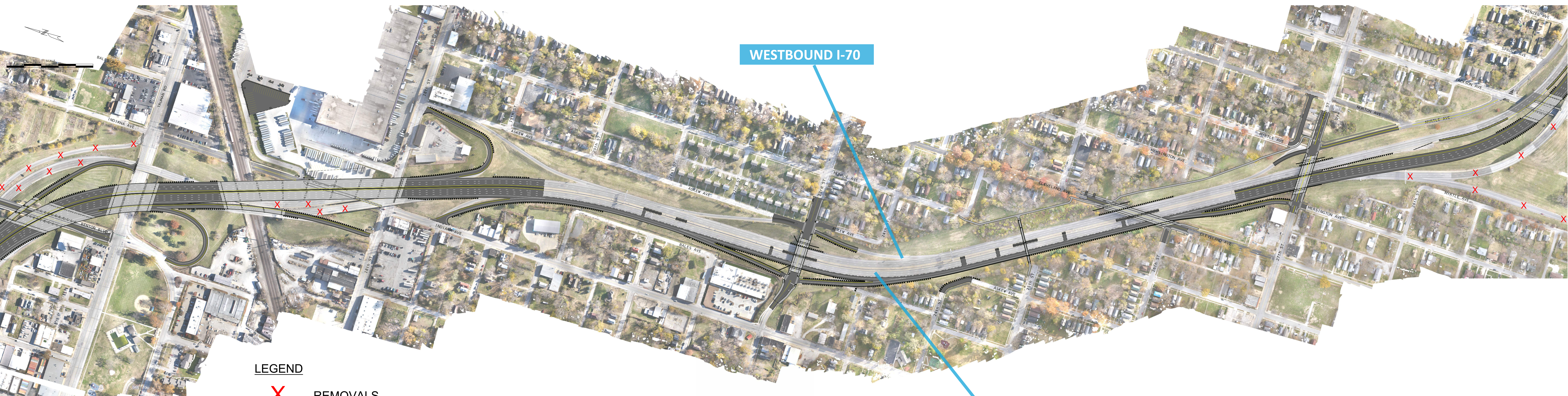
LEGEND

- REMOVALS
- NEW PAVEMENT
- NEW/REPLACED BRIDGE
- REHABILITATED BRIDGE



IMPROVE I-70 KANSAS CITY

Project Overview



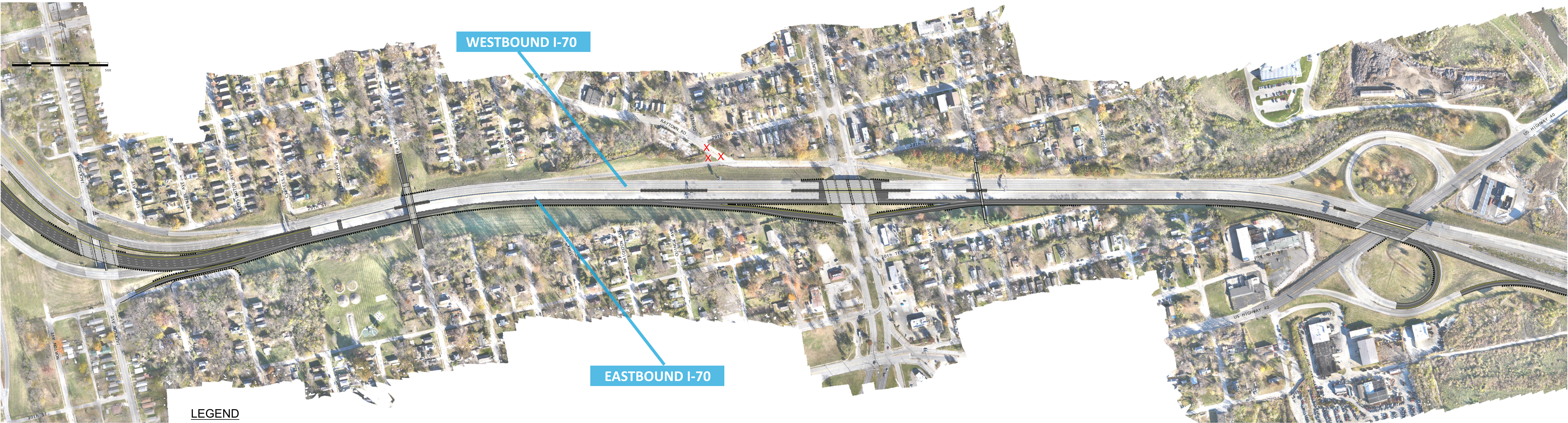
LEGEND

-  REMOVALS
-  NEW PAVEMENT
-  NEW/REPLACED BRIDGE
-  REHABILITATED BRIDGE


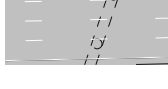



IMPROVE I-70 KANSAS CITY

Project Overview



LEGEND

-  REMOVALS
-  NEW PAVEMENT
-  NEW/REPLACED BRIDGE
-  REHABILITATED BRIDGE

