



I-44 IMPROVEMENTS IN PHELPS COUNTY PROJECT FACT SHEET

About I-44 in Mid Missouri

Interstate 44 is a vital east-west connection in our region, linking communities across Missouri and the nation. Since it was completed in 1966, it has become an important route for both daily travel and freight movement.

Project Goals

Enhance Drivability

Improve Safety

Address Capacity Concerns

Provide for Economic Development

About the Project

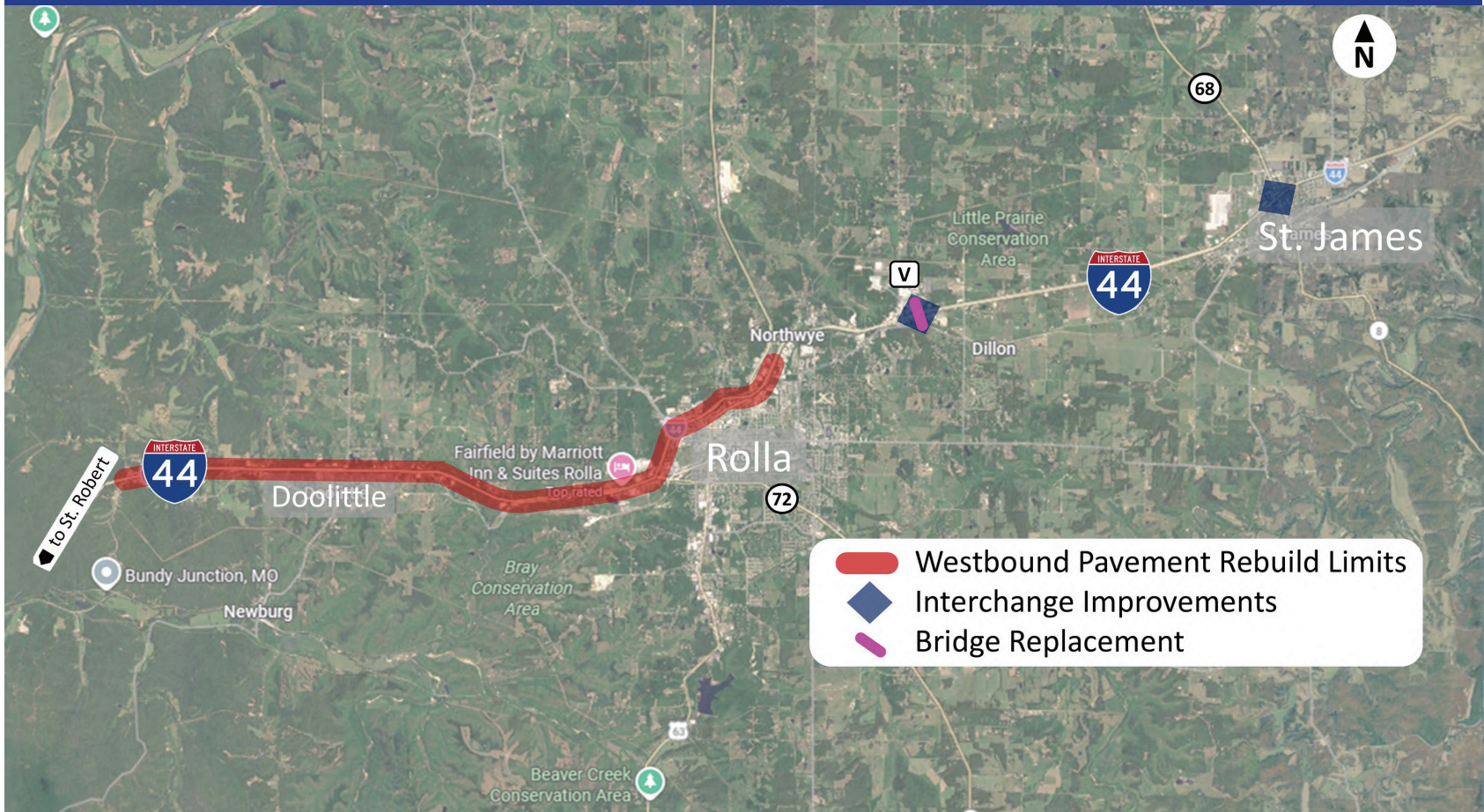
The Missouri Department of Transportation is planning pavement improvements along, approximately 10.4 miles of westbound I-44 from 0.5 miles east of the U.S. Route 63 interchange in Rolla to the Sugar Tree Road interchange west of Doolittle; replacement of the Route V bridge over I-44 at Exit 189; and improvements at the Route V and Missouri Route 68/8 (Exit 195) interchanges.

Rebuilding portions of eastbound I-44 in Rolla may be included, depending on available funding.

Contact Us

Missouri Department of Transportation, Central District
888-275-6636 | CDCR@modot.mo.gov





Construction Impacts

Construction will take place in stages to maintain two lanes traffic along I-44 in each direction throughout construction. Drivers may encounter lane shifts, temporary changes in traffic patterns, and adjustments to roadway width as work progresses.

Work along the corridor includes pavement improvements and interchange upgrades in multiple locations. Traffic conditions may vary throughout the project area, depending on location and construction phase, including bridge and ramp closures.

Schedule

Preliminary design in summer 2026.

Design complete in fall 2026.

Construction to begin in spring 2027.

Expected completion fall 2028.



Learn More

For more information about these improvements and other Forward 44 efforts, visit:

<https://www.modot.org/projects/interstate-44-corridor-upgrades-laclede-and-phelps-counties>

