

## BUTLER COUNTY

# Route U Bridge over St. Francis River

[Comment on this Project >](#)



Missouri Department of Transportation | Southeast District | 2675 North Main Street  
Sikeston, MO 63801 | 1-888 ASK MODOT (275-6636) | [www.modot.org/southeast](http://www.modot.org/southeast)



## DUNKLIN COUNTY

# Route 53 Bridge over Drainage Ditch 2

[Comment on this Project >](#)

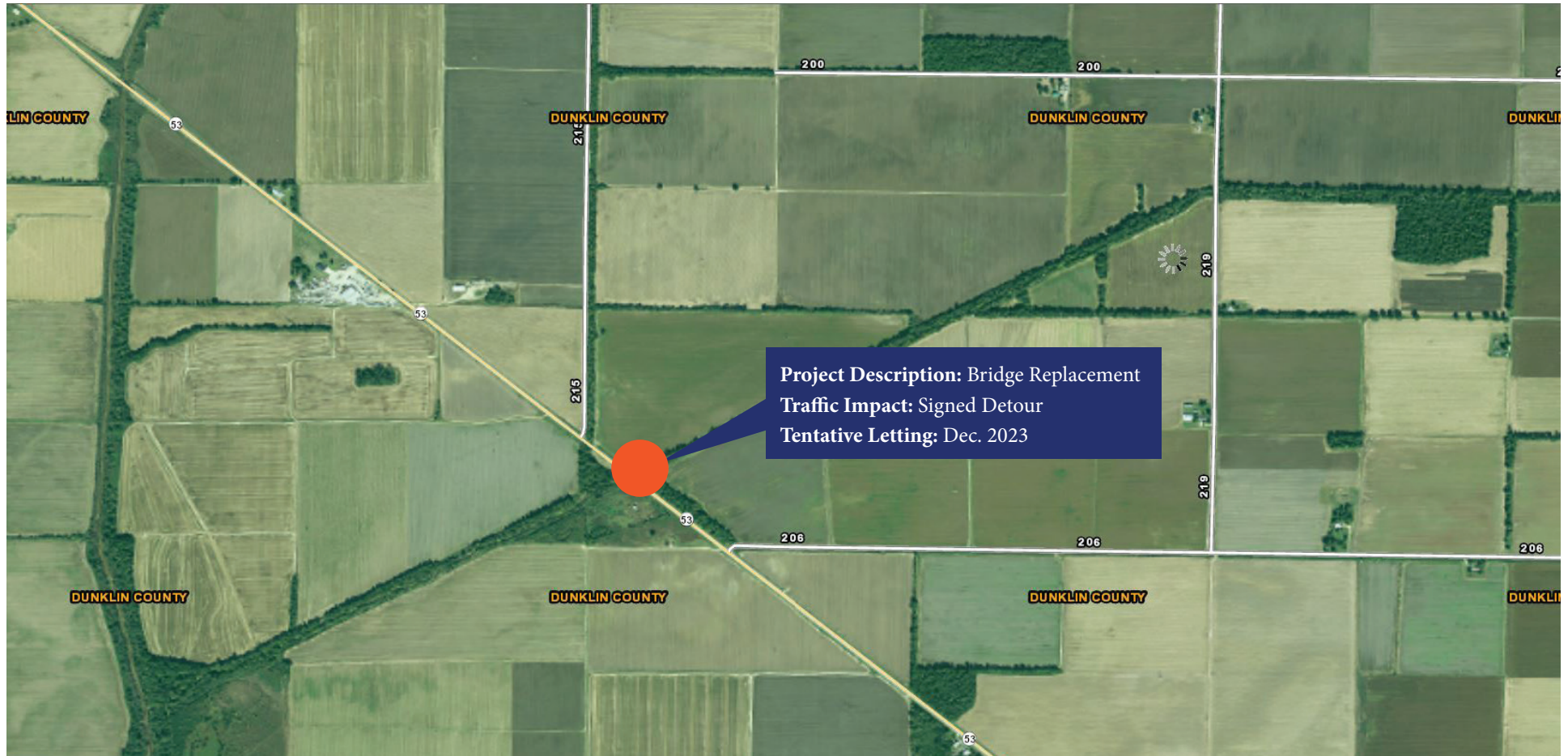


Missouri Department of Transportation | Southeast District | 2675 North Main Street  
Sikeston, MO 63801 | 1-888 ASK MODOT (275-6636) | [www.modot.org/southeast](http://www.modot.org/southeast)

## DUNKLIN COUNTY

# Route 53 Bridge over Lateral Ditch 2

[Comment on this Project >](#)



Missouri Department of Transportation | Southeast District | 2675 North Main Street  
Sikeston, MO 63801 | 1-888 ASK MODOT (275-6636) | [www.modot.org/southeast](http://www.modot.org/southeast)







## DUNKLIN COUNTY

# Route J Bridge over Drainage Ditch

[Comment on this Project >](#)



Missouri Department of Transportation | Southeast District | 2675 North Main Street  
Sikeston, MO 63801 | 1-888 ASK MODOT (275-6636) | [www.modot.org/southeast](http://www.modot.org/southeast)



# NEW MADRID COUNTY

## Route 62 Bridge over Drainage Ditch 44

[Comment on this Project >](#)



Missouri Department of Transportation | Southeast District | 2675 North Main Street  
Sikeston, MO 63801 | 1-888 ASK MODOT (275-6636) | [www.modot.org/southeast](http://www.modot.org/southeast)