

CAPE GIRARDEAU COUNTY

Route Y Bridge over Little Indian Creek

Comment on this Project >

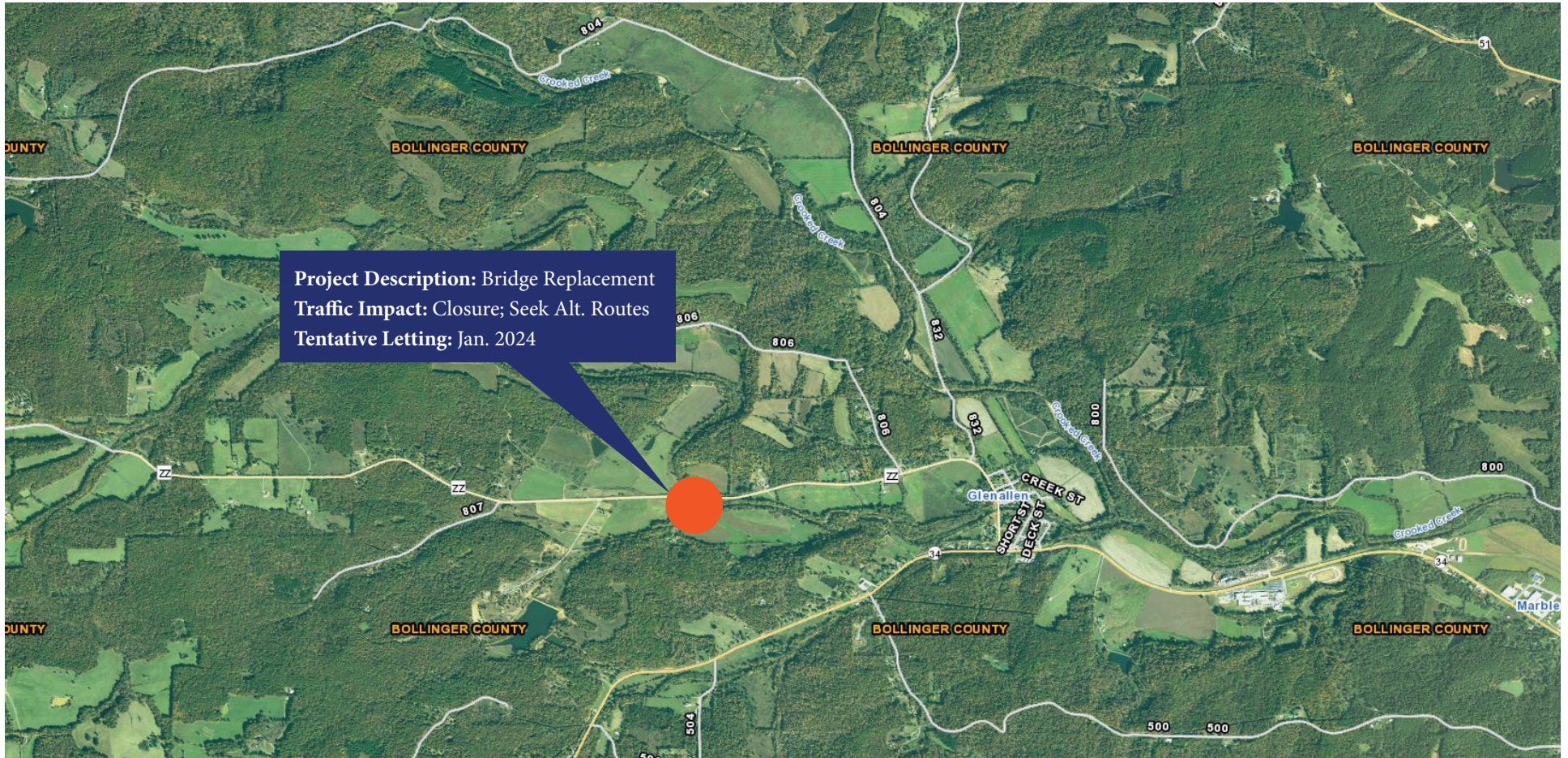


Missouri Department of Transportation | Southeast District | 2675 North Main Street
Sikeston, MO 63801 | 1-888 ASK MODOT (275-6636) | www.modot.org/southeast

BOLLINGER COUNTY

Route ZZ Bridge over Little Crooked Creek

Comment on this Project >

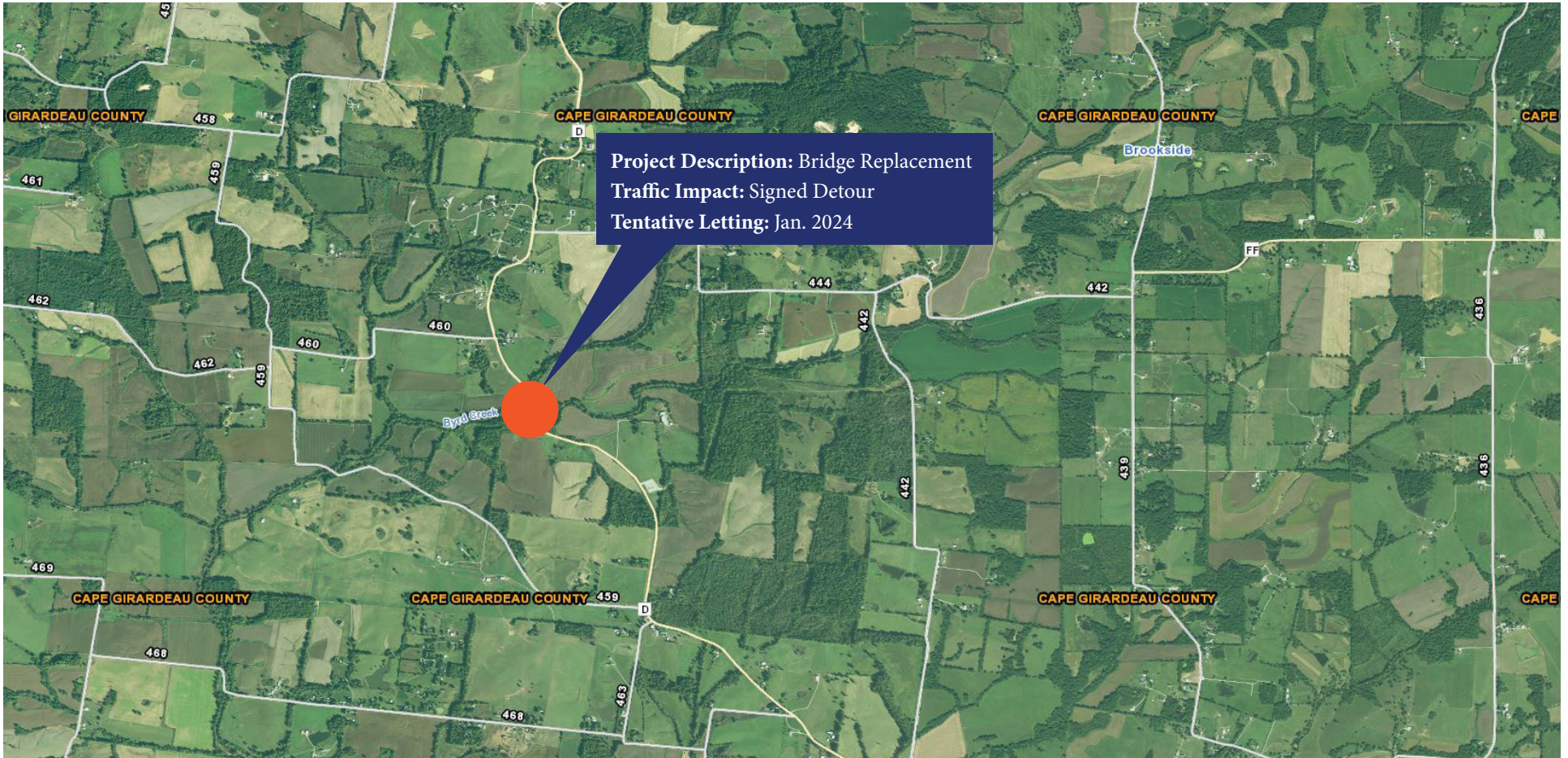


Missouri Department of Transportation | Southeast District | 2675 North Main Street
Sikeston, MO 63801 | 1-888 ASK MODOT (275-6636) | www.modot.org/southeast

CAPE GIRARDEAU COUNTY

Route D Bridge over Byrd Creek

[Comment on this Project >](#)



Missouri Department of Transportation | Southeast District | 2675 North Main Street
Sikeston, MO 63801 | 1-888 ASK MODOT (275-6636) | www.modot.org/southeast

STODDARD COUNTY

Route P Bridge over Drainage Ditch 35

Comment on this Project >



Missouri Department of Transportation | Southeast District | 2675 North Main Street
Sikeston, MO 63801 | 1-888 ASK MODOT (275-6636) | www.modot.org/southeast

