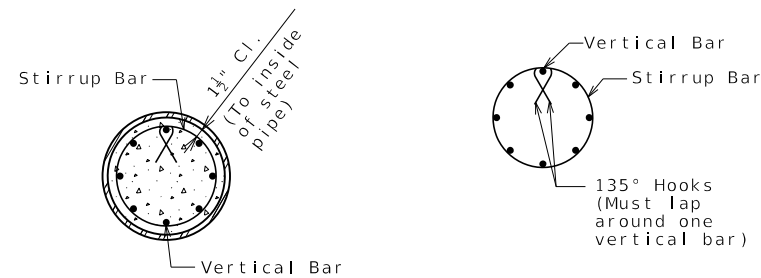
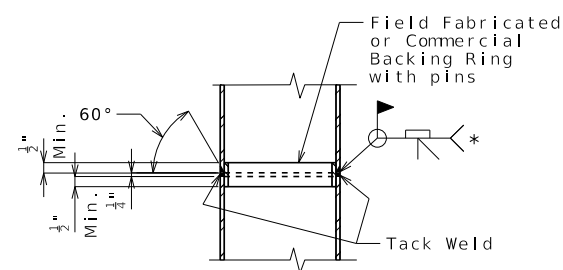


GALVANIZED CLOSED ENDED CAST-IN-PLACE (CECIP)  
CONCRETE PILE  
WITHOUT PILE POINT REINFORCEMENT



SECTION A-A (6)



STEEL PIPE PILE SPLICE

Cruciform Pile Point Reinforcement Data				
D1, CECIP Pile (O.D.)	14"	16"	20"	24"
B1	14"	16"	20"	24"
B2	6"	7"	8 7/8"	10 5/8"
B3	5 7/8"	6 7/8"	8 3/4"	10 1/2"
B4	6 5/8"	7 5/8"	9 1/2"	11 1/4"
B5	2"	2"	2 1/4"	2 3/4"
B6	3/4"	3/4"	1"	1 1/2"
H1	9 1/8"	10 1/2"	13"	15 3/8"
H2	8 1/8"	9 1/2"	12"	14 3/8"
H3	8 3/8"	9 3/4"	12 1/4"	14 5/8"
T1 and T2 Plate Thickness	3/4"	3/4"	1"	1 1/2"

1 Galvanized Closed Ended Cast-In-Place (CECIP) Concrete Pile Data				
Bent Number	1	2	3	4
D1, CECIP Pile (O.D.)	x			
Min. Nominal Wall Thickness	x			
Closure Plate Thickness	x			
Pile Point Reinforcement	x			
Vertical Bars	x			
L1, Length of Vertical Bars	x			
Upper Stirrup Bars	x			
Lower Stirrup Bars	x			

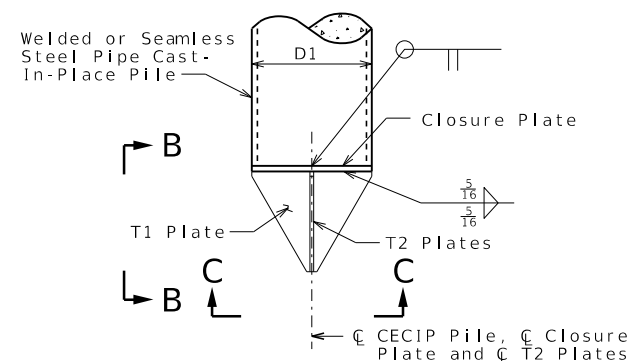
Notes:

Concrete for cast-in-place pile shall be Class B-1.

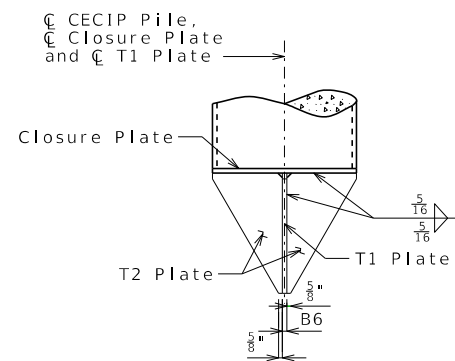
Steel for cruciform pile point reinforcement shall be ASTM A709 Grade 50.

The minimum wall thickness of any spot or local area of any type shall not be more than 12.5% under the specified nominal wall thickness.

Closure plate shall not project beyond the outside diameter of the pipe pile. Satisfactory weldments may be made by beveling tip end of pipe or by use of inside backing rings. In either case, proper gaps shall be used to obtain weld penetration full thickness of pipe. Payment for furnishing and installing closure plate will be considered completely covered by the contract unit price for Galvanized Cast-In-Place Concrete Piles.

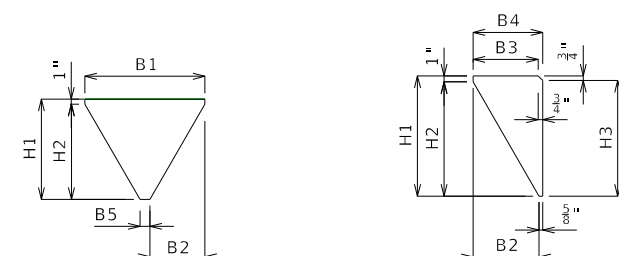


CRUCIFORM PILE POINT

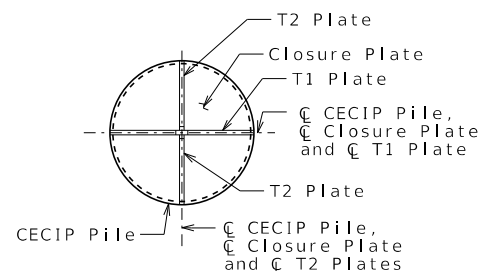


ELEVATION B-B

MANUFACTURED CONICAL PILE POINT  
(Omit closure plate)



## T1 PLATE DETAILS



SECTION C-C

Detailed  
Checked

Note: This drawing is not to scale. Follow dimensions.

Standard Drawing Guidance (do not show on plans):

Do not use 20" and 24" diameter closed ended cast-in-place (CECIP) concrete pile without approval of Structural Project Manager or Liaison.

①

Typical Data for CECIP Piles				
D1, CECIP Pile (O.D.) (by design)	14"	16"	20"	24"
Min. Nominal Wall Thickness (by design)	1/2" (See EPG 751.36.2.2.2 for commonly available nominal wall thicknesses.)			
Closure Plate Thickness ④	3/4"		1"	1 1/2"
Pile Point Reinforcement	"Cruciform", "Conical" or "None"			
Vertical Bars	6-#5-Vxxx	6-#6-Vxxx	8-#6-Vxxx	12-#6-Vxxx
L1, Length of Vertical Bars	5'-3"		7'-3"	
Upper Stirrup Bars	3-#4-Pxxx			
Lower Stirrup Bars	5-#4-Pxxx		7-#4-Pxxx	

② For LFD seismic performance category (SPC) A and LRFD seismic design category (SDC) A, minimum number of vertical bars, size and length and seismic stirrup bar information is provided in Galvanized Closed Ended Cast-In-Place (CECIP) Concrete Pile Data. Modify reinforcement size, length of vertical bars (L1), number of vertical bars, number of stirrup bars, and bar mark information as needed for specific project.

Min. L1 = 5'-3" for 14"Ø and 16"Ø CECIP &  
7'-3" for 20"Ø and 24"Ø CECIP

Min. Lower Stirrup Bars = 5-#4 for 14"Ø and 16"Ø CECIP &  
7-#4 for 20"Ø and 24"Ø CECIP

Min. Vertical Bars = 6-#5 for 14"Ø CECIP,  
6-#6 for 16"Ø CECIP,  
8-#6 for 20"Ø CECIP &  
12-#6 for 24"Ø CECIP

For SPC B, C and D, modify reinforcement as needed to meet AASHTO 17th edition (LFD) and for SDC B, C and D, modify reinforcement as needed to meet AASHTO Guide Specification for LRFD Seismic Bridge Design (SGS).

③ For non-integral end bents, revise wording as shown in EPG 751.50 (Note G5a13). For continuous concrete slab bridges, replace this note with standard note G5a14.

④

Minimum Closure Plate Thickness		
CECIP Pile (O.D.), D1	No pile point reinforcement required	Cruciform pile point reinforcement required
14"	3/4"	3/4"
16"	3/4"	3/4"
20"	3/4"	1"
24"	3/4"	1 1/2"

⑤ Use appropriate note based on seismic category (See EPG 751.50, Notes G5a9a & G5a9b)

⑥ These details of bar array 6, 8 and 12 count, can be used as needed in sheet details "Section A-A" & "DETAIL OF SEISMIC STIRRUP BAR" by using centroid as the handle.

