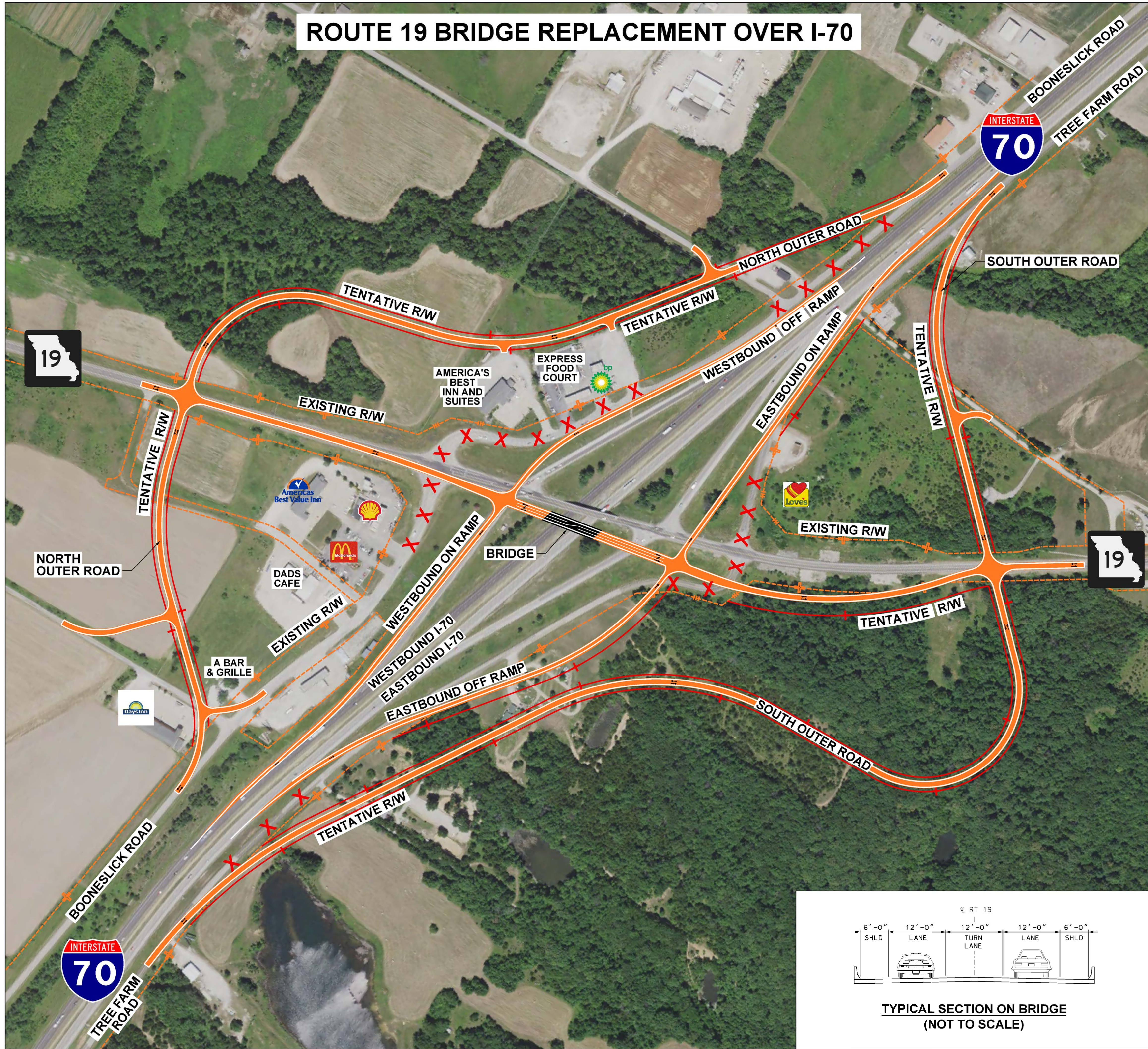


ROUTE 19 BRIDGE REPLACEMENT OVER I-70



ORANGE OPTION

RECOMMENDED OPTION FROM 2005 "IMPROVE I-70" EIS
 COST: \$25.7 MILLION

DESCRIPTION OF IMPROVEMENTS:

- REALIGN ROUTE 19 TO THE WEST
- RECONSTRUCT INTERCHANGE RAMPS AND OUTER ROADS PER MODOT ACCESS MANAGEMENT GUIDELINES
- 48' WIDE BRIDGE TO PROVIDE TWO TRAFFIC LANES AND CENTER TURN LANE

ADVANTAGES:

- SPACING BETWEEN RAMPS AND OUTER ROADS LESSENS FUTURE CONGESTION
- NO TRAFFIC SIGNALS TO MAINTAIN

DISADVANTAGES:

- HIGHEST COST
- LARGEST AMOUNT OF RIGHT OF WAY ACQUISITION
- CHANGES IN OUTER ROAD ACCESS FOR BUSINESSES
- INTERSECTIONS WILL REQUIRE ALL-WAY STOP IN FUTURE
- GREATEST ENVIRONMENTAL IMPACTS

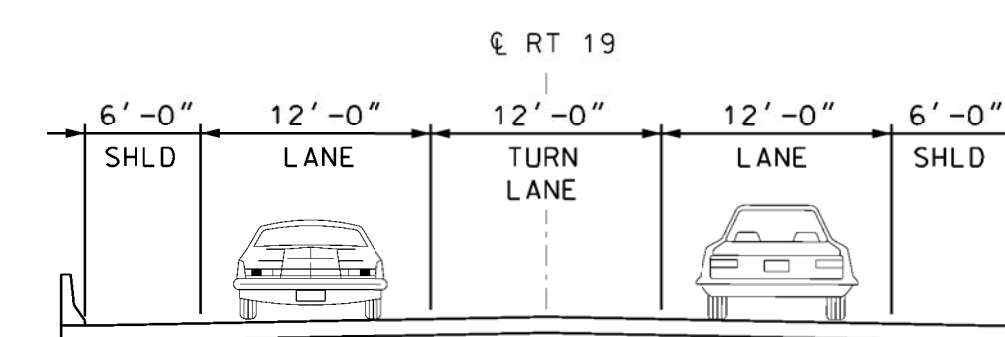
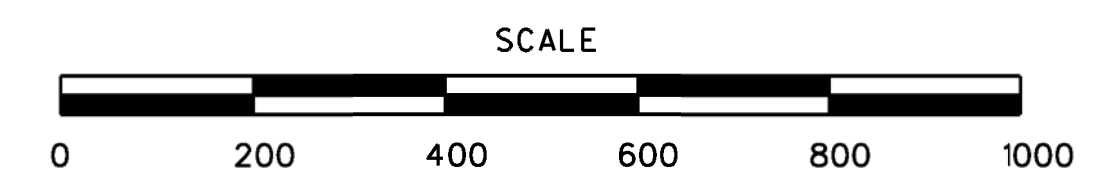
INTERSECTION PERFORMANCE

A TO F GRADING SCALE (A=EXCELLENT; D=ACCEPTABLE; F=FAILURE)

INTERSECTION	CURRENT (2021)	FUTURE (2041)
NORTH OUTER ROAD-RELOCATED	B/C (OR STOP CONTROL)	B/C (4-WAY STOP)
WESTBOUND RAMPS	A (RAMP STOP CONTROL)	B/C (3-WAY STOP)
EASTBOUND RAMPS	A (RAMP STOP CONTROL)	C/B (3-WAY STOP)
SOUTH OUTER ROAD-RELOCATED	B (OR STOP CONTROL)	C/B (4-WAY STOP)

LEGEND

- TENTATIVE ALIGNMENT
- TENTATIVE BRIDGE
- EXISTING RIGHT OF WAY
- TENTATIVE RIGHT OF WAY



TYPICAL SECTION ON BRIDGE
 (NOT TO SCALE)

